

Notes: Pour steps monolithically with cap.
 Space reinforcement in cap to miss anchor bolts.
 For anchor bolt installation details see sheet 10 of 19.

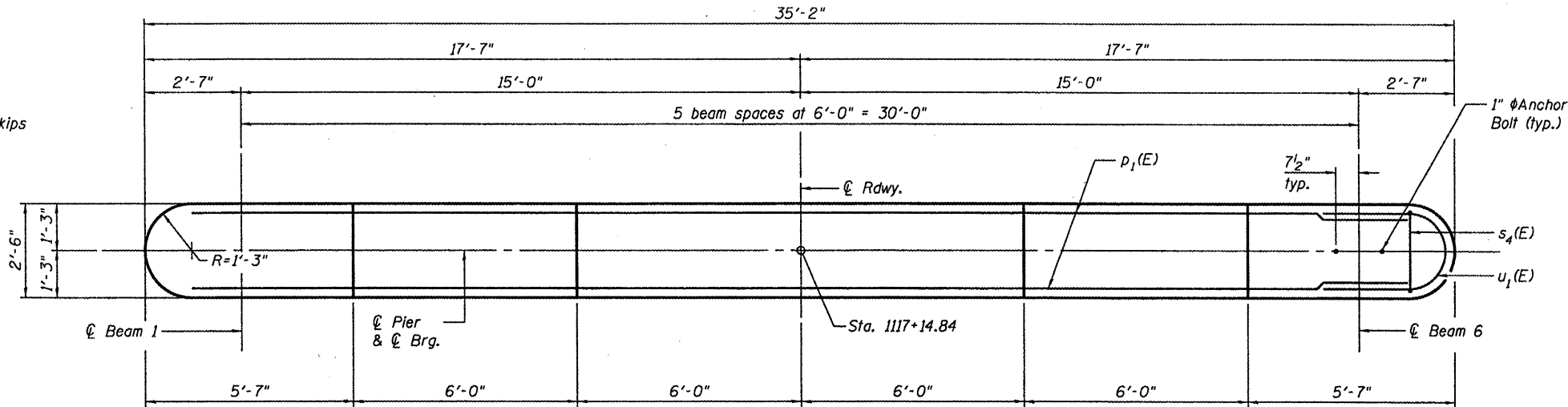
STATE OF ILLINOIS
 DEPARTMENT OF TRANSPORTATION

ROUTE NO.	SECTION	COUNTY	TOTAL SHEETS	SHEET NO.	SHEET NO. 14
FAS 1360	65-BR	WOODFORD	39	27	19 SHEETS
FED. ROAD DIST. NO. 7		ILLINOIS	FED. AID PROJECT		

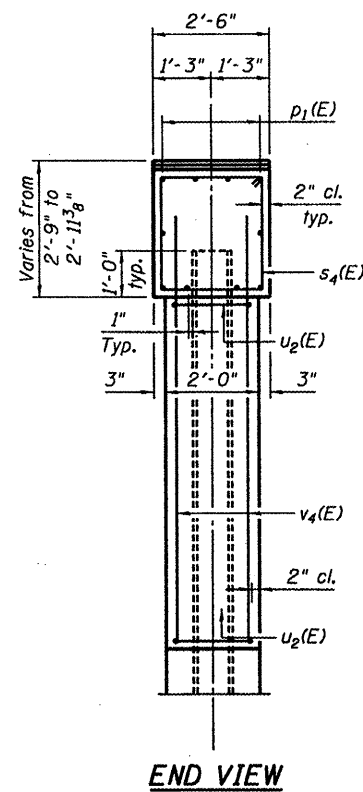
Contract # 68530

PILE DATA

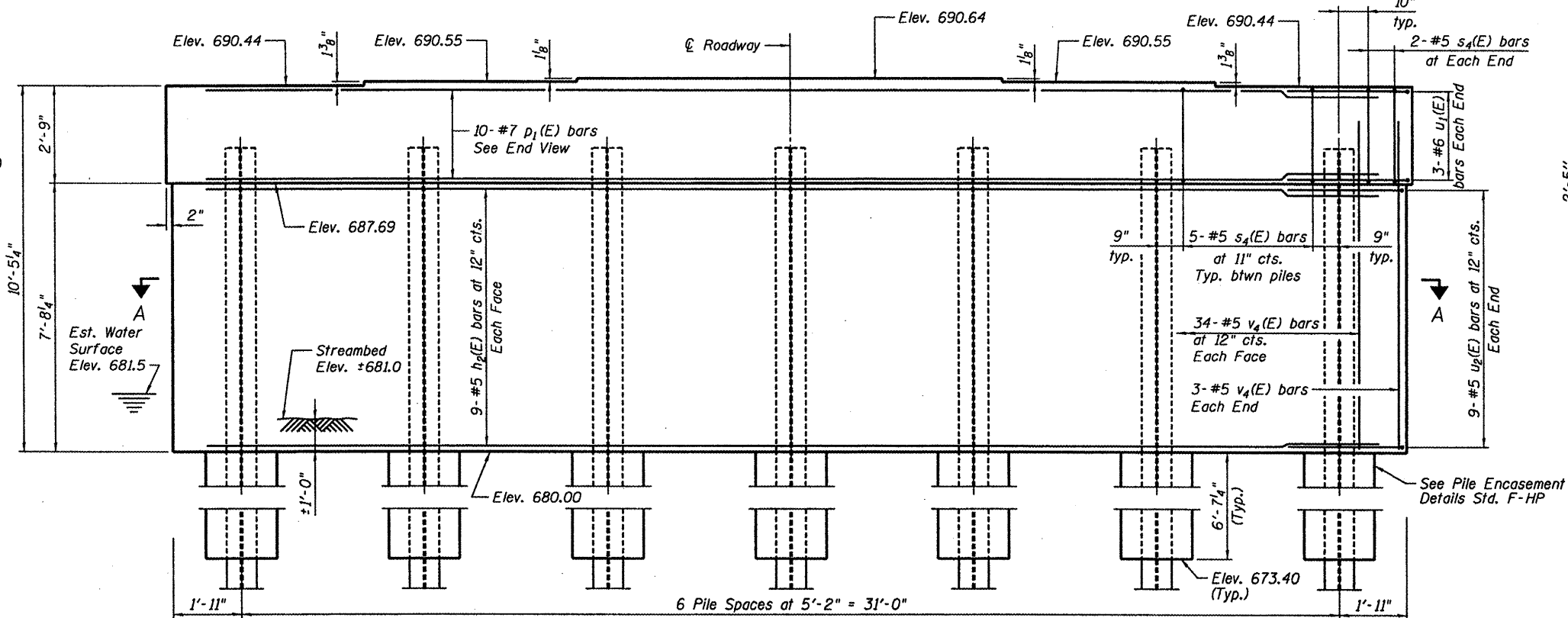
Type: Steel HP 12x53
 Nominal Required Bearing: 300 kips
 Allowable Resistance Available: 100 kips
 Est. Length: 51 ft.
 No. Production Piles: 7



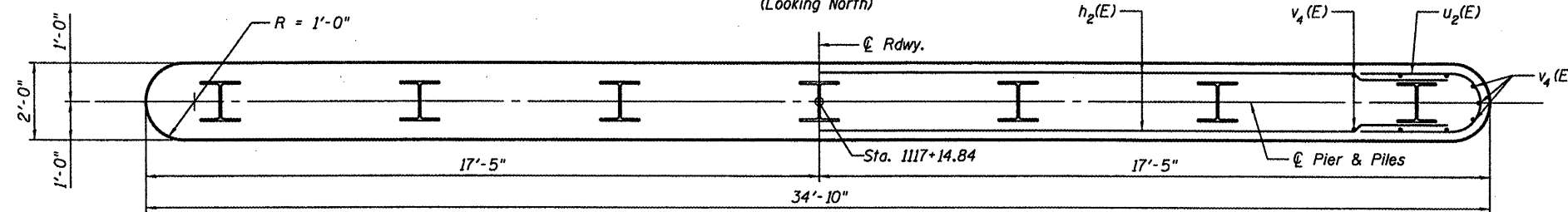
TOP PLAN



END VIEW



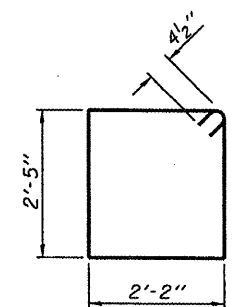
ELEVATION
 (Looking North)



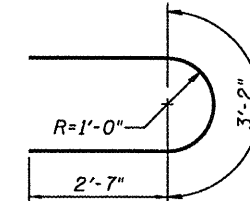
SECTION A-A

BILL OF MATERIAL

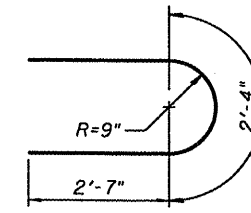
Bar	No.	Size	Length	Shape
h ₂ (E)	18	#5	32'-4"	—
p ₁ (E)	10	#7	32'-2"	—
s ₄ (E)	34	#5	9'-11"	□
u ₁ (E)	6	#6	8'-4"	⊂
u ₂ (E)	18	#5	7'-6"	⊂
v ₄ (E)	74	#5	9'-0"	—
Concrete Structures		Cu. Yd.	28.8	
Reinforcement Bars, Epoxy Coated		Pound	2,530	
Structure Excavation		Cu. Yd.	23.3	
Furnishing Steel Piles HP 12x53		Foot	357	
Driving Piles		Foot	357	
Underwater Structure Excavation protection - Location 2		Each	1	
Concrete Encasement		Cu. Yd.	5.3	



BAR s₄(E)



BAR u₁(E)



BAR u₂(E)

DESIGNED	CTW
CHECKED	CDL
DRAWN	DP
CHECKED	CTW

PIER 2
 F.A.S. ROUTE 1360 SEC. 65-BR
 IL ROUTE 251 OVER PANTHER CREEK
 WOODFORD COUNTY
 STATION 1116+87.00
 STRUCTURE NO. 102-0081

EFK Moen, LLC
 Civil Engineering Design