

F.A.P. RTE.	SECTION	COUNTY	TOTAL SHEETS	SHEET NO.
693	*	TAZEWELL	82	50
STA. _____		TO STA. _____		
FED. ROAD DIST. NO. _____		ILLINOIS FED. AID PROJECT		

*13R-1(9)TS(12)IL-1-1

VIDEO CONTROL CABINET AND EQUIPMENT - 1.0 L SUM

THE CONTRACTOR SHALL COMPLETE THE FOLLOWING ITEMS:

1. INSTALL DEPARTMENT FURNISHED CCTV DOME CAMERA ON PROPOSED LIGHT POLE. THE CONTRACTOR SHALL FURNISH ALL CABLES, BRACKETS, AND HARDWARE REQUIRED FOR INSTALLATION.
2. INSTALL DEPARTMENT FURNISHED EQUIPMENT CABINET ON PROPOSED LIGHT POLE. THE CONTRACTOR SHALL FURNISH ALL BRACKETS AND HARDWARE REQUIRED FOR INSTALLATION.

CONSTRUCTION NOTES

1. THE CONTRACTOR SHALL TERMINATE SIX MULTIMODE FIBERS IN THE CCTV EQUIPMENT CABINET AND TRAFFIC SIGNAL CABINET WITH ST CONNECTORS.
2. THE REQUIREMENT FOR INSTALLING A TRACER WIRE FOR THE FIBER OPTIC CABLE IS WAIVED.
3. THE DEPARTMENT WILL INTEGRATE ALL CCTV EQUIPMENT. REFER TO CONTRACT SPECIAL PROVISIONS FOR ADDITIONAL INFORMATION.
4. THE CCTV CAMERA SHALL BE INSTALLED ON THE LIGHT POLE TO PROVIDE AN OPTIMAL VIEW OF THE BRIDGE AND ILLINOIS RIVER. THE CCTV CAMERA SHALL BE ORIENTED AND INSTALLED TO THE SATISFACTION OF THE ENGINEER.

SCHEDULE OF QUANTITIES

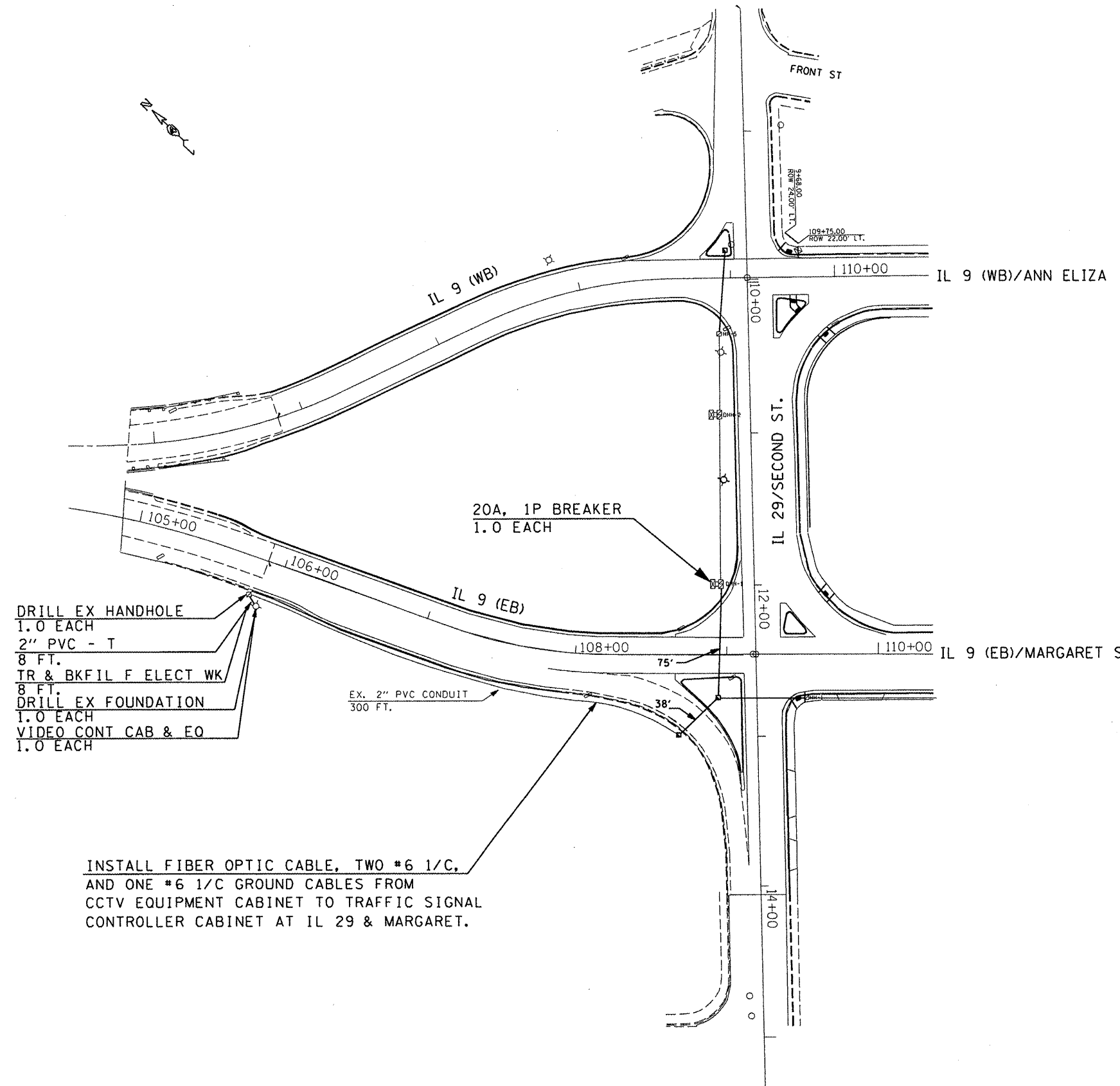
DESCRIPTION	UNIT	QUANTITY
CONDUIT IN TRENCH, 2" DIA., PVC	FOOT	8
ELECTRIC CABLE IN CONDUIT, 600V, (XLP-TYPE USE) 1/C NO. 6	FOOT	939
TRENCH AND BACKFILL FOR ELECTRICAL WORK	FOOT	8
DRILL EXISTING FOUNDATION	EACH	1
DRILL EXISTING HANDHOLE	EACH	1
VIDEO CONTROL CABINET AND EQUIPMENT	L SUM	1
FIBER OPTIC CABLE IN CONDUIT, 62.5/125, MM12F SM12F	FOOT	469.5
ELECTRIC CABLE IN CONDUIT, 1/C, NO. 6 GROUNDING	FOOT	469.5
20 AMP, 1-POLE CIRCUIT BREAKER	EACH	1

ITS
SHEET 1 OF 1

NOT TO SCALE

REVISIONS	
NAME	DATE

ILLINOIS DEPARTMENT OF TRANSPORTATION
**IL 9 (MCNAUGHTON BRIDGE)
CCTV CAMERA
INSTALLATION DETAIL**
SCALE: VERT. _____
HORIZ. _____
DATE _____ DRAWN BY _____
CHECKED BY _____



- DRILL EX HANDHOLE
1.0 EACH
- 2" PVC - T
8 FT.
- TR & BKFIL F ELECT WK
8 FT.
- DRILL EX FOUNDATION
1.0 EACH
- VIDEO CONT CAB & EO
1.0 EACH

20A, 1P BREAKER
1.0 EACH

INSTALL FIBER OPTIC CABLE, TWO #6 1/C,
AND ONE #6 1/C GROUND CABLES FROM
CCTV EQUIPMENT CABINET TO TRAFFIC SIGNAL
CONTROLLER CABINET AT IL 29 & MARGARET.

PLOT DATE = 3/28/2008
 FILE NAME = S:\GEN\ORF\1510\PLNS\SO\ADP-NEW\Active Contracts\68608\IL 9 Plan - plan.dgn
 PLOT SCALE = 1/8"=1'-0"
 USER NAME = bruce