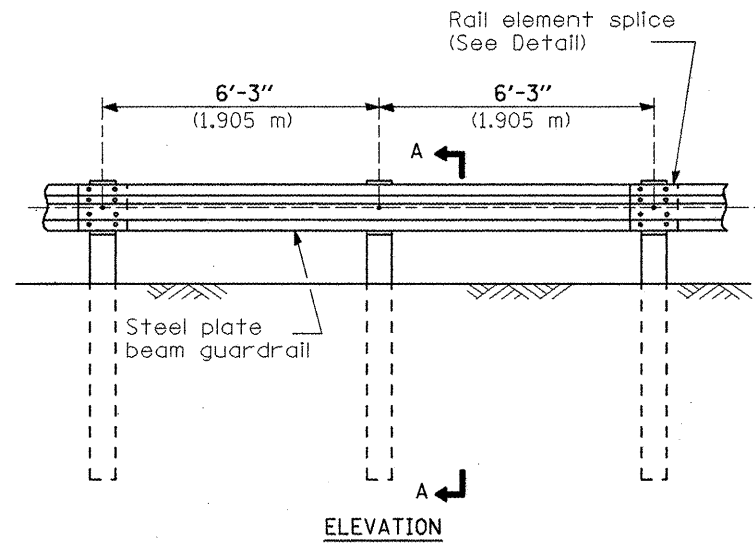
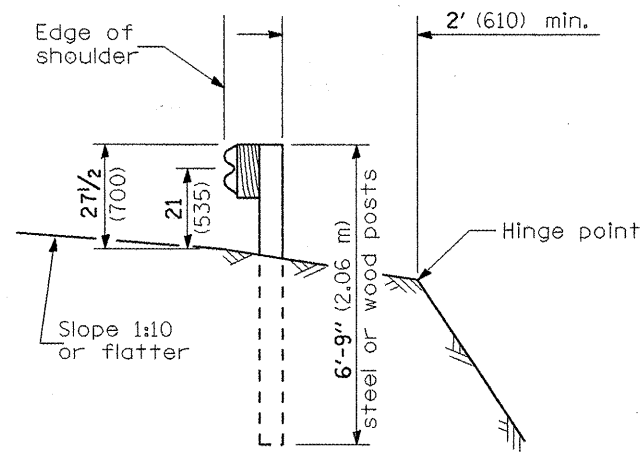


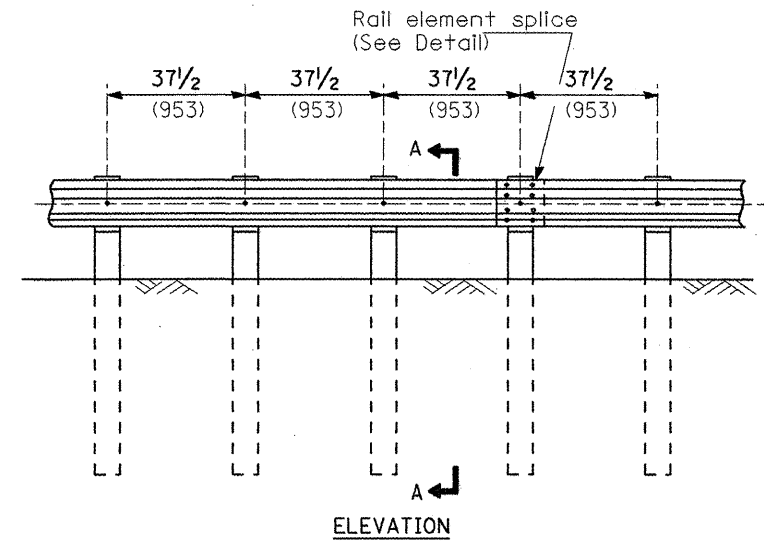
F.A. RTE. #	SECTION	COUNTY	TOTAL SHEETS	SHEET NO.
653	1051-1	PUTNAM	24	16
STA.		TO STA.		
FED. ROAD DIST. NO.		ILLINOIS FED. AID PROJECT		



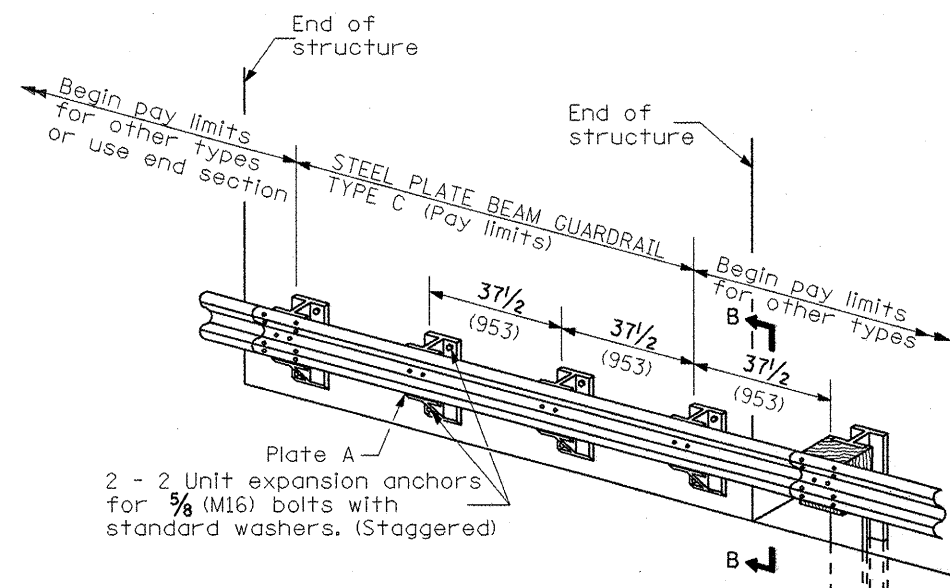
TYPE A
6'-3" (1.905 m) Typical post spacing



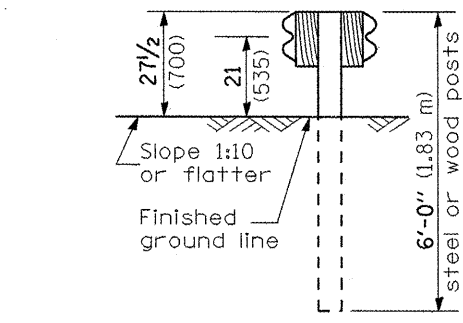
SECTION A-A



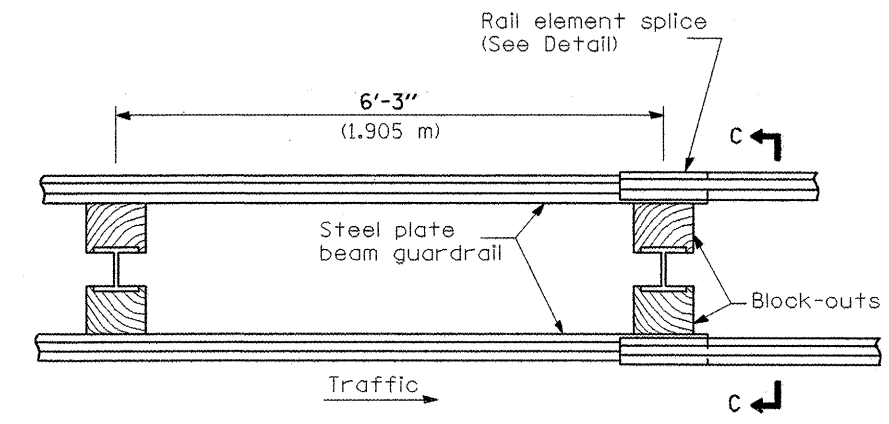
TYPE B
37 1/2 (953) Closed post spacing



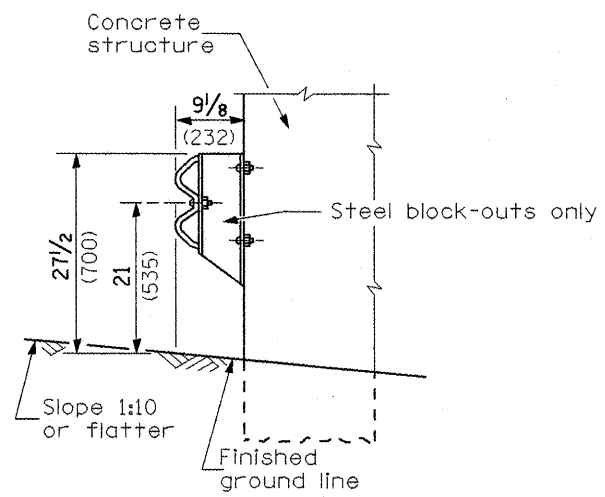
TYPE C
37 1/2 (953) Block-out spacing



SECTION C-C



TYPE D
Double steel plate beam guardrail
6'-3" (1.905 m) typical post spacing



SECTION B-B

GENERAL NOTES

All slope ratios are expressed as units of vertical displacement to units of horizontal displacement (V:H).
 All dimensions are in millimeters (Inches) unless otherwise shown.
 The existing steel posts may be drilled to match the bolt pattern shown herein for the wood block-out, or a new steel post shall be provided.
 This detail is applicable to the guardrail system used prior to January 1, 2007. For details on the Midwest Guardrail System, see Standard 630001.

All dimensions are in inches (millimeters) unless otherwise noted.

DATE	REVISIONS	BY
3-1-07	NEW DETAIL	RJD

ILLINOIS DEPARTMENT OF TRANSPORTATION
DISTRICT CADD STANDARD
 REMOVE AND REERECT
 STEEL PLATE BEAM GUARDRAIL
 CADD STD. 630011-D4(1) SHEET 1 OF 4
 SCALE: NOT DRAWN TO SCALE DRAWN BY: CADD
 DATE **DATE** CHECKED BY:

DESIGNER NOTE: Use this CADD Standard when removing and re-erecting existing guardrail that was originally installed prior to January 1, 2007. Note this is only for removing and re-erecting so the 27 1/2" height is maintained. If installing new guardrail use the State Standard.

***DATE**

DGN-ONLY