

PROJECT ENGINEER: SEAN P. COYLE (309) 671-3456

DESIGNER: MICHAEL J. BOYER (309) 671-3457

CONTRACT NO. 68768

F.A.P. RTE.	SECTION	COUNTY	TOTAL SHEETS	SHEET NO.
653	1051-1	PUTNAM	24	1

STATE OF ILLINOIS
DEPARTMENT OF TRANSPORTATION
DIVISION OF HIGHWAYS

PROPOSED HIGHWAY PLANS

FAP 653, ROUTE IL 18
SECTION 1051-1
PROJECT ACHSIP-0653 (027)
PUTNAM COUNTY
C-94-005-08

FOR INDEX OF SHEETS, SEE SHEET NO. 2

NPDES PERMIT REQUIRED

QCQA HOT-MIX ASPHALT

LIST OF STANDARDS

- 2080001-04
- 701011-01
- 701306-01
- 701311-02
- 701326-02



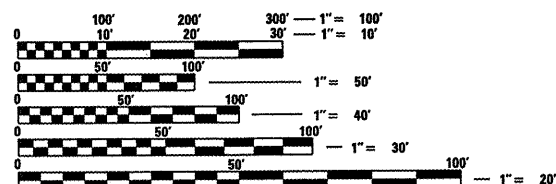
Project Ends
Sta. 200 + 00

Bridge Omission
SN 078-0033
Sta. 124 + 92

Work includes the placement of Hot-Mix Asphalt
Shoulders 8" and milling of Rumble Strips on
IL Rte. 18 from the IL Rte. 26 junction continuing
east 3.0 miles, and all other collateral work.

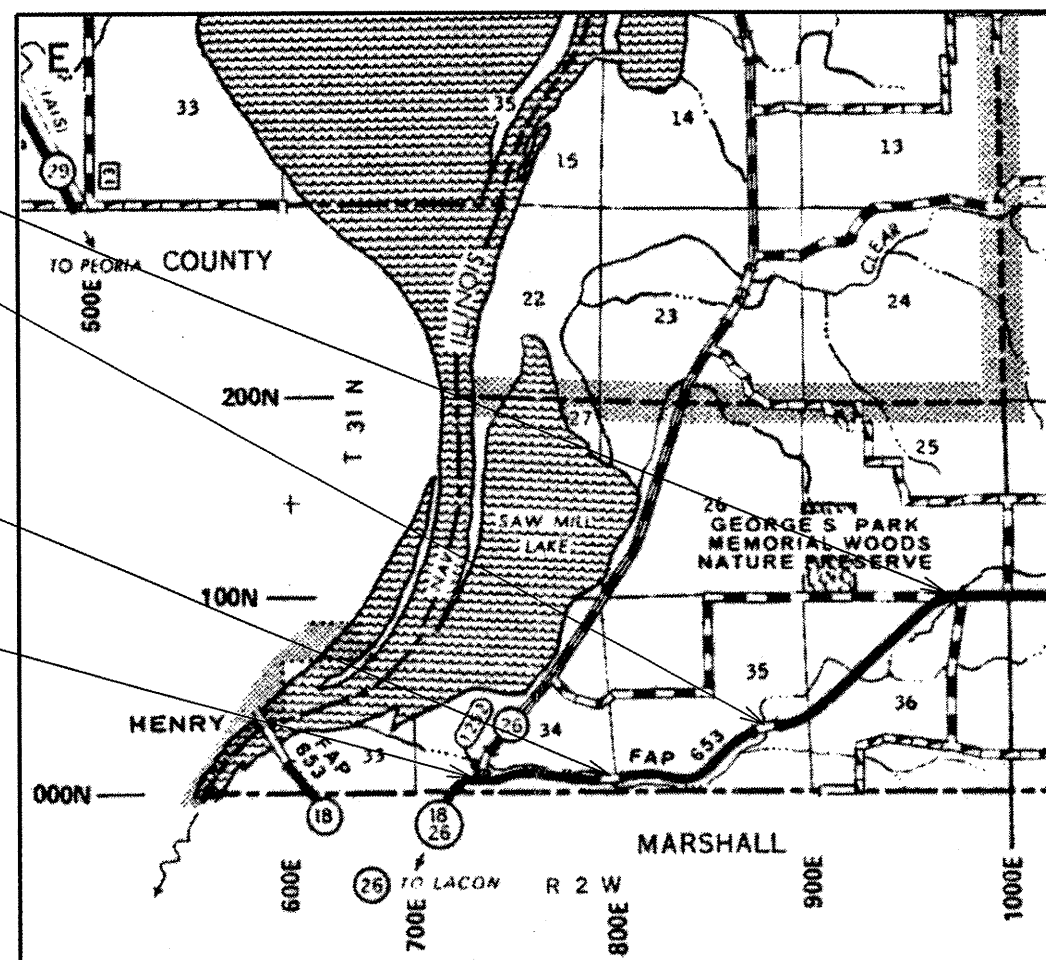
Bridge Omission
SN 078-0013
Sta. 82 + 00.00

Project Begins
Sta. 45 + 00



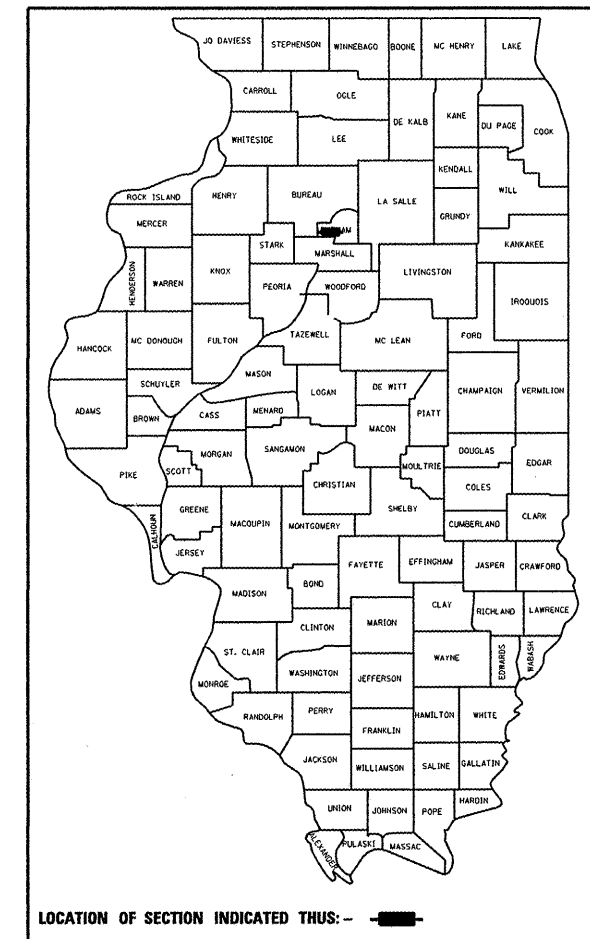
FULL SIZE PLANS HAVE BEEN PREPARED USING STANDARD
ENGINEERING SCALES. REDUCED SIZED PLANS WILL NOT
CONFORM TO STANDARD SCALES. IN MAKING MEASUREMENTS
ON REDUCED PLANS, THE ABOVE SCALES MAY BE USED.

J.U.L.I.E.
JOINT UTILITY LOCATION INFORMATION FOR EXCAVATION
1-800-892-0123



GROSS LENGTH OF THE SECTION = 15,500.00 FT = 2.94 MILES
NET LENGTH OF THE SECTION = 15,500.00 FT = 2.94 MILES

D-94-005-08



LOCATION OF SECTION INDICATED THUS: —

STATE OF ILLINOIS
DEPARTMENT OF TRANSPORTATION
DIVISION OF HIGHWAYS

SUBMITTED *M. E. G.* 20 08

May 9, 2008
DEPUTY DIRECTOR OF HIGHWAYS, REGION ENGINEER

Eric E. Horn
ENGINEER OF DESIGN AND ENVIRONMENT

May 9, 2008
Christine M. Reed
DIRECTOR OF HIGHWAYS, CHIEF ENGINEER

PRINTED BY THE AUTHORITY
OF THE STATE OF ILLINOIS

CONTRACT NO. 68768

F.A. RTE.	SECTION	COUNTY	TOTAL SHEETS	SHEET NO.
653	105I-1	PUTNAM	24	2
STA.		TO STA.		
FED. ROAD DIST. NO.		ILLINOIS FED. AID PROJECT		

INDEX OF SHEETS

Sheet NO.	Title
1	Cover Sheet
2	Sheet index, General Notes, Commitments
3	Summary of Quantities
4 - 9	Typical Sections
10 - 11	Schedule of Quantities
12	Line Diagram /SWPPP
13	Intermittent Rumble Strip Detail
14 - 15	Shoulder Widening for Traffic Barrier Terminals

GENERAL NOTES :

COMMITMENTS

Commitments are not to be altered without the written approval of all parties to which the commitment was made.

PROPERTY OWNER ACCESS REQUIREMENT

Access must be maintained to all existing properties during construction per Article 107.09 unless arrangements are made in writing by the Contractor with the property owners with a copy to the Engineer for short-term closures.

HOT-MIX ASPHALT MIXTURE REQUIREMENTS

Mixture Use(s):	Shoulders (Bottom Lifts)	Shoulders (Surface Lift)
RAP % (MAX)**	30%	30%
AC/PG:	64-22	64-22
Design Air Voids:	4.0 % @ N = 30	3.0 % @ N = 30
Mixture Composition:	IL 19.0 L	IL 9.5 L
Friction Aggregate:	N.A.	Mix C

** If the RAP option is selected, the asphalt cement grade may need to be adjusted; this will be determined by the Engineer.

COMMITMENTS:

There are no commitments for this project.

PLOT DATE = 8/15/2006
 PLOT SCALE = 1/8" = 1'-0"
 USER NAME = bogerrn

REVISIONS		ILLINOIS DEPARTMENT OF TRANSPORTATION
NAME	DATE	
		GENERAL NOTES / COMMITMENTS

VERT. SCALE: DRAWN BY
 HORIZ. CHECKED BY
 DATE

F.A. RTE.	SECTION	COUNTY	TOTAL SHEETS	SHEET NO.
653	1051-1	PUTNAM	24	3
STA.		TO STA.		
FED. ROAD DIST. NO.		ILLINOIS FED. AID PROJECT		

SUMMARY OF QUANTITIES

CODE NO.	ITEM	UNITS	CONSTRUCTION TYPE CODE	
			TOTAL QUANTITY	PUTNAM
				SFTY-2A
				90% FED - 10% STATE
20200600	EXCAVATION AND GRADING FOR EXISTING SHOULDER	UNIT	285	285
20201006	GRADING AND SHAPING SHOULDERS	UNIT	285	285
25000210	SEEDING, CLASS 2A	ACRE	3.3	3.3
25000400	NITROGEN FERTILIZER NUTRIENT	POUND	297	297
25000500	PHOSPHORUS FERTILIZER NUTRIENT	POUND	297	297
25000600	POTASSIUM FERTILIZER NUTRIENT	POUND	297	297
25100105	MULCH, METHOD 1	ACRE	3.3	3.3
28000500	INLET AND PIPE PROTECTION	EACH	20	20
44000920	BITUMINOUS CONCRETE SHOULDER REMOVAL	SQ YD	827	827
48203029	HOT-MIX ASPHALT SHOULDERS, 8"	SQ YD	12651	12651
63100167	TRAFFIC BARRIER TERMINAL, TYPE 1 (SPECIAL) TANGENT	EACH	35	35
63300205	REMOVAL AND REINSTALLATION OF EXISTING STEEL PLATE BEAM GUARD RAIL, TYPE A	FOOT	1375	1375
64200105	SHOULDER RUMBLE STRIP OF EXISTING	FOOT	28465	28465
67100100	MOBILIZATION	L SUM	1	1
70100460	TRAFFIC CONTROL AND PROTECTION, STANDARD 701306	LSUM	1	1
70100500	TRAFFIC CONTROL AND PROTECTION, STANDARD 701326	LSUM	1	1
70103815	TRAFFIC CONTROL SURVEILLANCE	CAL DA	20	20
* 78200410	GUARDRAIL MARKER, TYPE A	EACH	35	35
* 78201000	GUARDRAIL MARKER - DIRECT APPLIED	EACH	35	35
X0301512	GRARDRAIL AGGREGATE EROSION CONTROL	TON	279	279

* SPECIALTY ITEM

PLOT DATE = 3/15/2008
 PLOT SCALE = 1/8" = 100'
 USER NAME = boyer.mj

REVISIONS	
NAME	DATE

ILLINOIS DEPARTMENT OF TRANSPORTATION

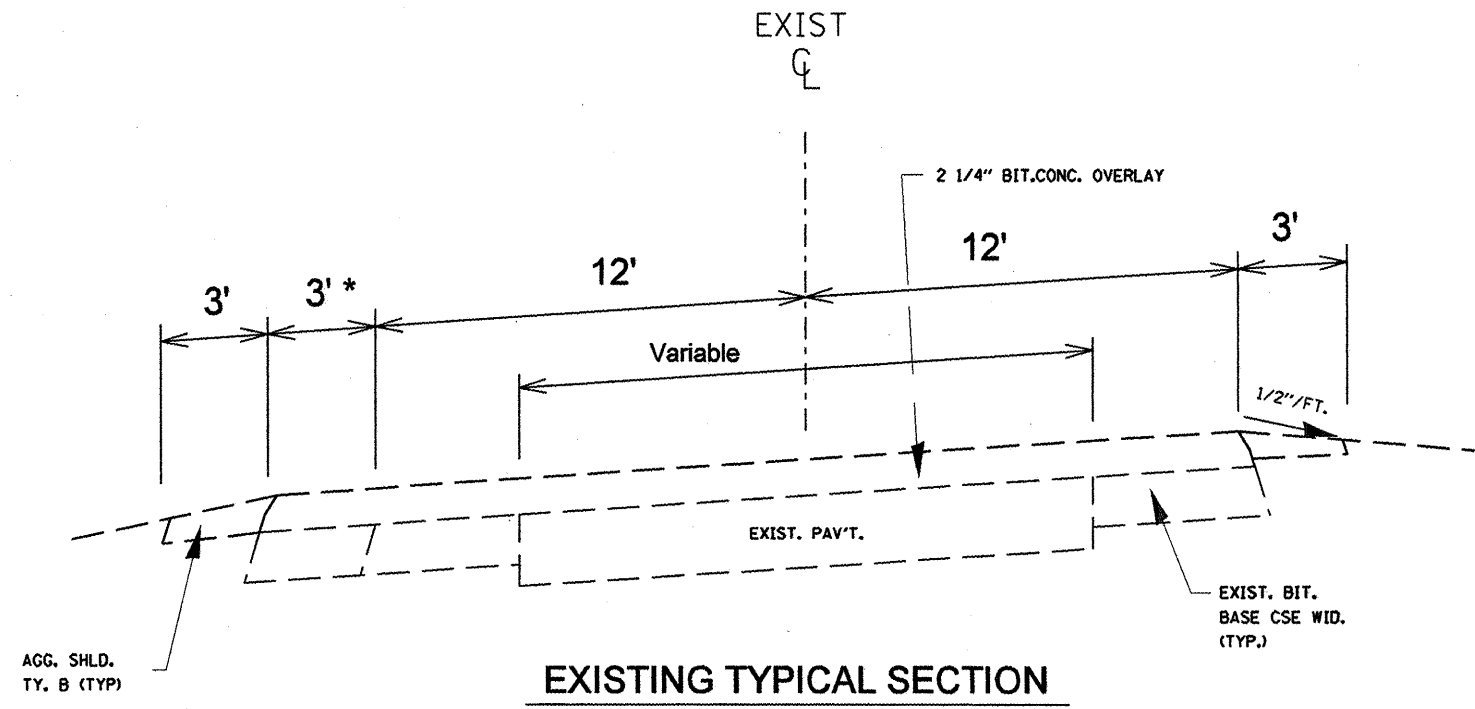
SUMMARY OF QUANTITIES

SCALE: VERT. _____
 HORIZ. _____

DATE _____ DRAWN BY _____
 CHECKED BY _____

F.A.P. RTE.	SECTION	COUNTY	TOTAL SHEETS	SHEET NO.
653	1051-1	PLUTNAM	24	4
STA.		TO STA.		
FED. ROAD DIST. NO.		ILLINOIS FED. AID PROJECT		

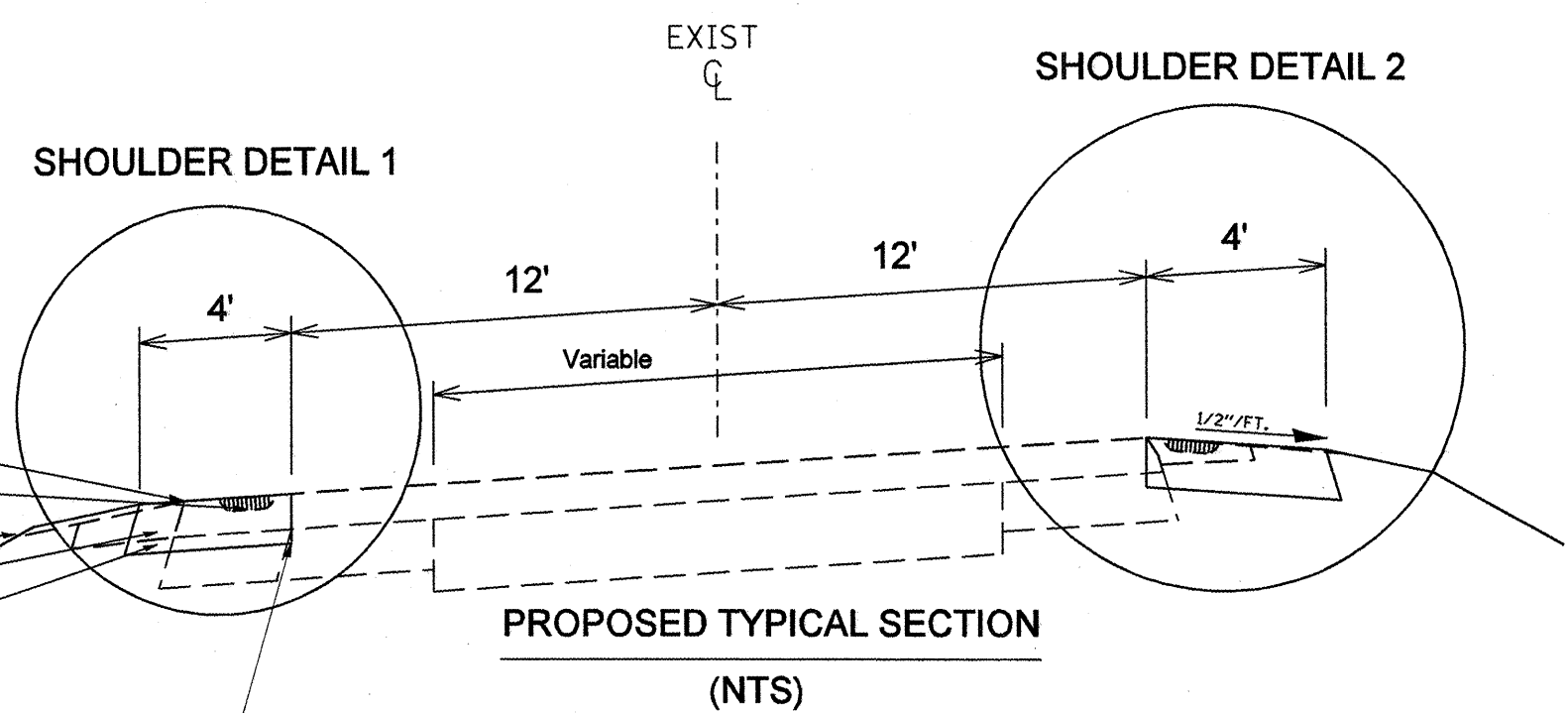
LT	45+00	48+54.74	curve 1
LT	52+52.43	56+36	curve 2
RT	45+00	48+54.74	curve 1
RT	55+99	58+92.49	curve 2
RT	58+92.49	59+05.54	curve 2/curve 3
RT	59+05.54	64+55	curve 3
RT	104+00.86	105+57	curve 4
RT	109+26	111+87.53	curve 4



EXISTING TYPICAL SECTION
(NTS)

* CURVES WITH 3' EXTRA WIDENING ON INSIDE OF CURVES

CURVE #	P.I. STA.	S.E. RATE	DIRECTION	LIMIT
1	43+73.60	0.08 FT/FT	RIGHT	45+00 - 48+54.74
2	55+90	0.08 FT/FT	LEFT	52+52.43 - 59+05.54
3	62+50	0.08 FT/FT	RIGHT	58+92.49 - 65+79.53
4	108+24	0.08 FT/FT	LEFT	104+00.86 - 111+87.53



PROPOSED TYPICAL SECTION
(NTS)

- SHOULDER REMOVAL
- SHOULDER RUMBLE STRIP
- GRADING AND SHAPING SHOULDERS
- EXCAVATING AND GRADING EXISTING SHOULDERS
- HOT-MIX ASPHALT SHOULDER, 8"

SAW CUT COST SHALL BE INCLUDED IN THE COST OF EXCAVATING AND GRADING EXISTING SHOULDERS

REVISIONS	
NAME	DATE

ILLINOIS DEPARTMENT OF TRANSPORTATION

TYPICAL SECTION 1

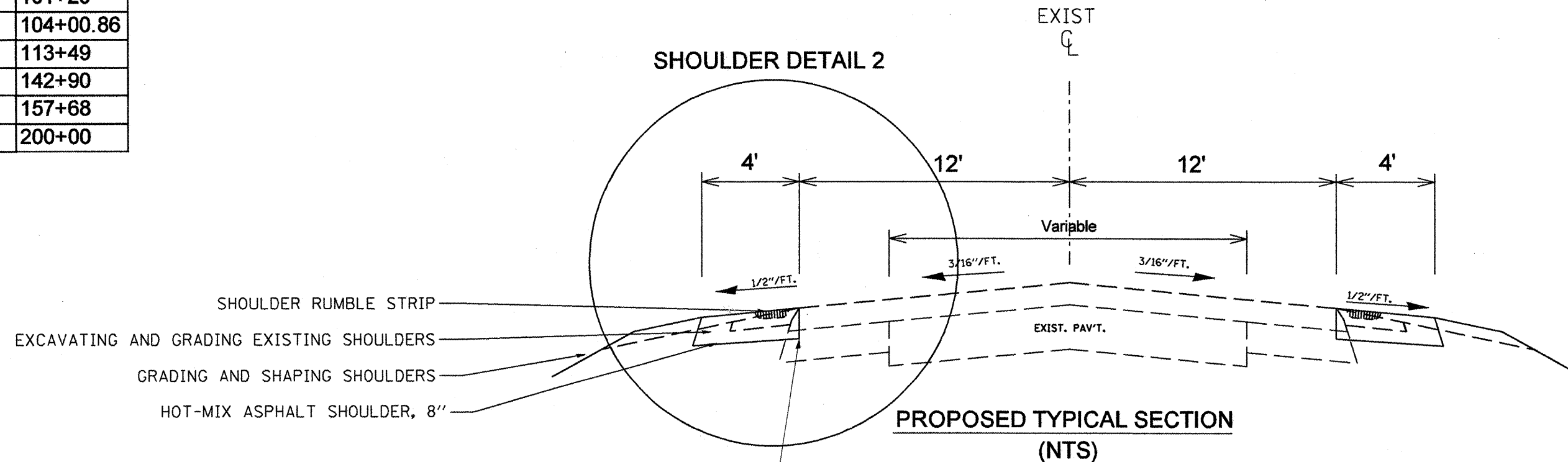
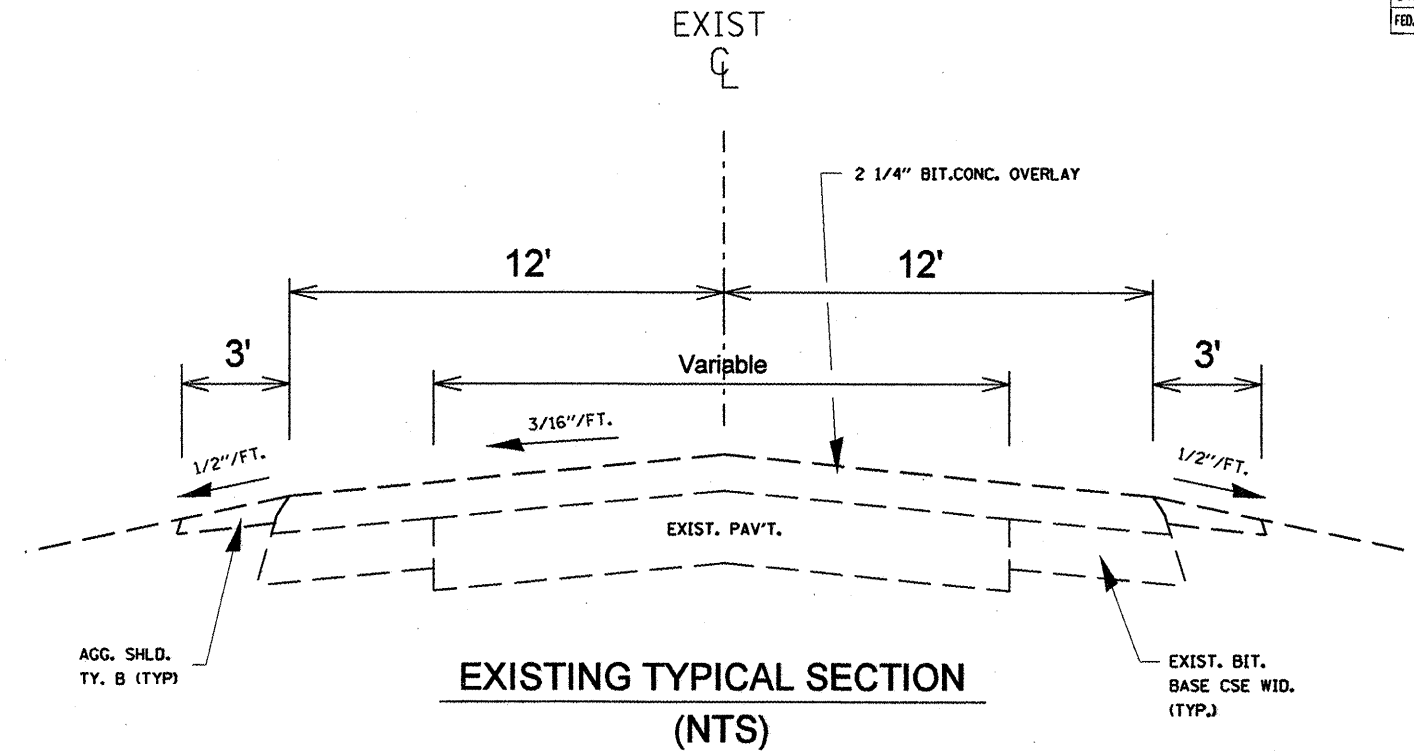
SCALE: VERT. _____
HORIZ. _____

DATE _____ DRAWN BY _____
CHECKED BY _____

PLOT DATE: 3/16/2008
 FILE NAME: S:\ENR\PROJECTS\1051\1051-1\1051-1-4.dwg
 PLOT SCALE: 1/8"=1'-0"
 USER NAME: bryant

F.A.P. RTE.	SECTION	COUNTY	TOTAL SHEETS	SHEET NO.
653	105I-1	PUTNAM	24	5
STA.		TO STA.		
FED. ROAD DIST. NO.	ILLINOIS	FED. AID PROJECT		

LT	48+54.74	52+52.43
LT	67+29	74+42
LT	84+29	89+68
LT	91+58	94+80
LT	98+18	102+14
LT	103+83	104+00.86
LT	111+87.53	113+49
LT	115+02	115+55
LT	120+46	122+83
LT	133+87	142+37
LT	144+32	147+97
LT	150+24	158+00
LT	162+33	200+00
RT	48+54.74	50+71
RT	65+92	80+01
RT	86+67	89+20
RT	90+94	94+11
RT	97+86	101+29
RT	103+30	104+00.86
RT	111+87.53	113+49
RT	140+52	142+90
RT	145+01	157+68
RT	161+91	200+00



SAW CUT COST SHALL BE INCLUDED IN THE COST OF EXCAVATING AND GRADING EXISTING SHOULDERS

REVISIONS	
NAME	DATE

ILLINOIS DEPARTMENT OF TRANSPORTATION

TYPICAL SECTION 2

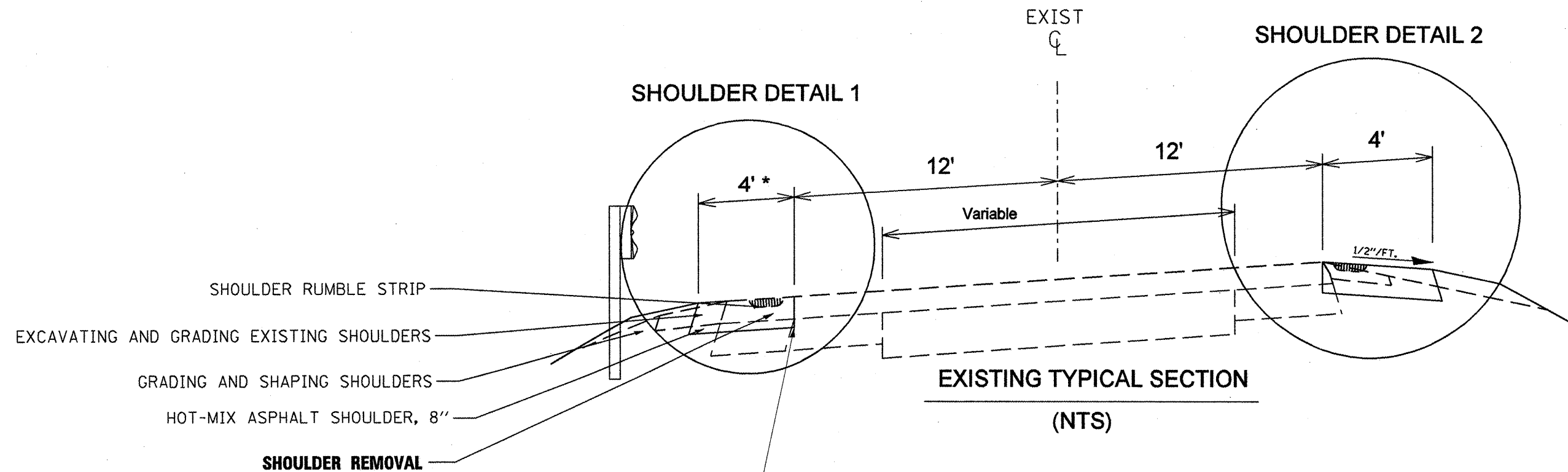
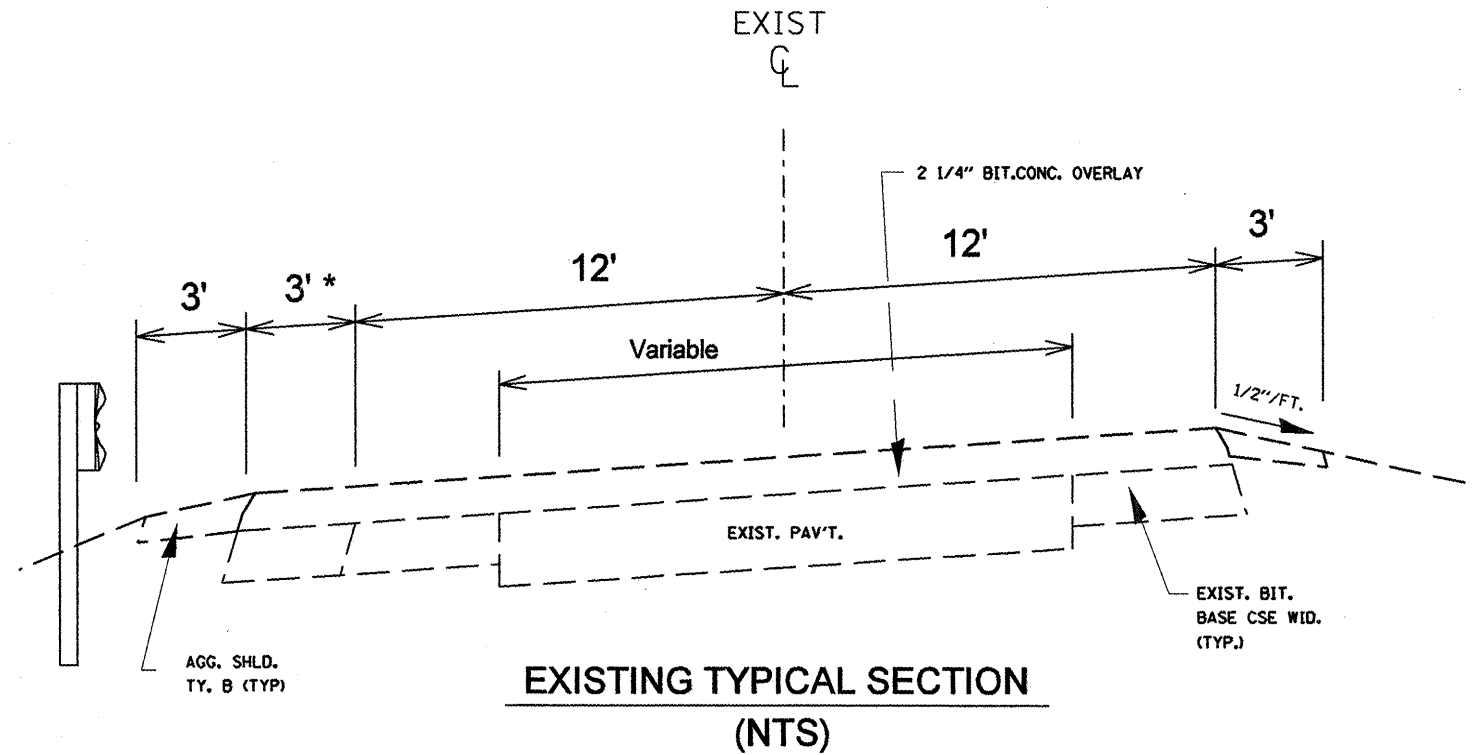
SCALE: VERT. / HORIZ.

DATE

DRAWN BY / CHECKED BY

F.A.P. RTE.	SECTION	COUNTY	TOTAL SHEETS	SHEET NO.
653	105I-1	PUTNAM	24	6
STA.		TO STA.		
FED. ROAD DIST. NO.		ILLINOIS FED. AID PROJECT		

LT	56+36	58+92.49	guardrail/curve 2
LT	58+92.49	59+05.54	guardrail/curve 2/curve 3
LT	59+05.54	65+79.53	guardrail/curve 3
LT	104+00.86	111+87.53	curve 4
RT	52+52.43	55+99	guardrail/curve 2
RT	64+55	65+79.53	guardrail/curve 3
RT	105+57	109+26	guardrail/curve 4



- SHOULDER RUMBLE STRIP
- EXCAVATING AND GRADING EXISTING SHOULDERS
- GRADING AND SHAPING SHOULDERS
- HOT-MIX ASPHALT SHOULDER, 8"
- SHOULDER REMOVAL

SAW CUT COST SHALL BE INCLUDED IN THE COST OF EXCAVATING AND GRADING EXISTING SHOULDERS

REVISIONS	
NAME	DATE

ILLINOIS DEPARTMENT OF TRANSPORTATION

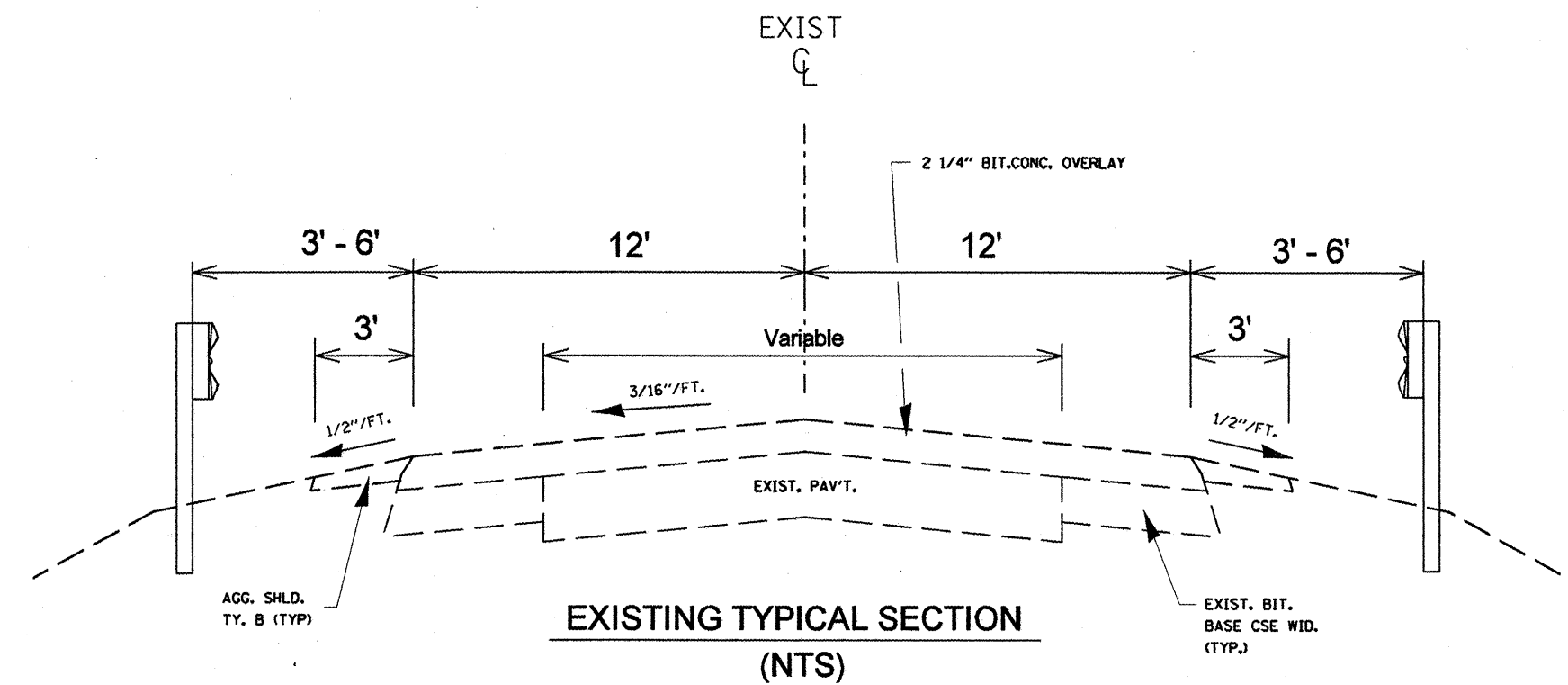
TYPICAL SECTION 3

SCALE: VERT. DATE
HORIZ.

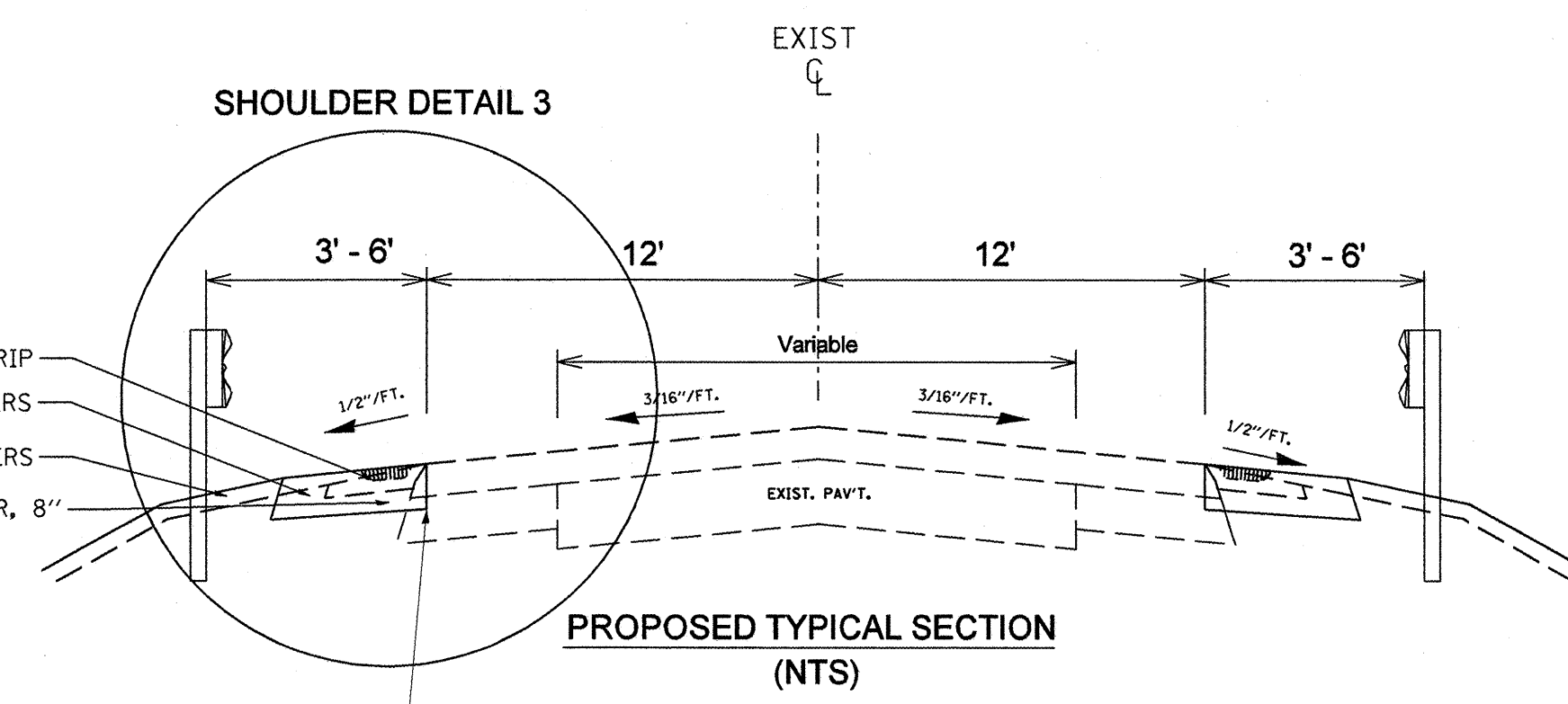
DRAWN BY
CHECKED BY

F.A.P. RTE.	SECTION	COUNTY	TOTAL SHEETS	SHEET NO.
653	105I-1	PUTNAM	24	7
STA.		TO STA.		
FED. ROAD DIST. NO.	ILLINOIS	FED. AID PROJECT		

LT	65+79.53	67+29	guardrail
LT	74+42	81+65.50	guardrail
LT	81+65.50	82+34.23	Bridge Ommision SN 078-0013
LT	82+34.23	84+29	guardrail
LT	89+68	91+58	guardrail
LT	94+80	98+18	guardrail
LT	102+14	103+83	guardrail
LT	113+49	115+02	guardrail
LT	115+55	120+46	guardrail
LT	122+83	124+63	guardrail
LT	133+02	133+87	guardrail
LT	142+37	144+32	guardrail
LT	147+97	150+24	guardrail
LT	158+00	162+33	guardrail
RT	50+71	52+52.43	guardrail
RT	65+79.53	65+92	guardrail
RT	80+01	81+65.5	guardrail
RT	81+65.5	82+34.23	Bridge Ommision SN 078-0013
RT	82+34.23	86+67	guardrail
RT	89+20	90+94	guardrail
RT	94+11	97+86	guardrail
RT	101+29	103+30	guardrail
RT	113+49	124+78	guardrail
RT	124+78	125+06	Bridge Ommision SN 078-0033
RT	142+90	145+01	guardrail
RT	157+68	161+91	guardrail



SHOULDER DETAIL 3



- SHOULDER RUMBLE STRIP
- EXCAVATING AND GRADING EXISTING SHOULDERS
- GRADING AND SHAPING SHOULDERS
- HOT-MIX ASPHALT SHOULDER, 8"

PLOT DATE = 3/19/2008
 FILE NAME = SADEINORNF1AS1DMP150400136876868768.dwg
 PLOT SCALE = 1/8"=1'-0"
 USER NAME = bayerm

SAW CUT COST SHALL BE INCLUDED IN THE COAST OF EXCAVATING AND GRADING EXISTING SHOULDERS

REVISIONS	
NAME	DATE

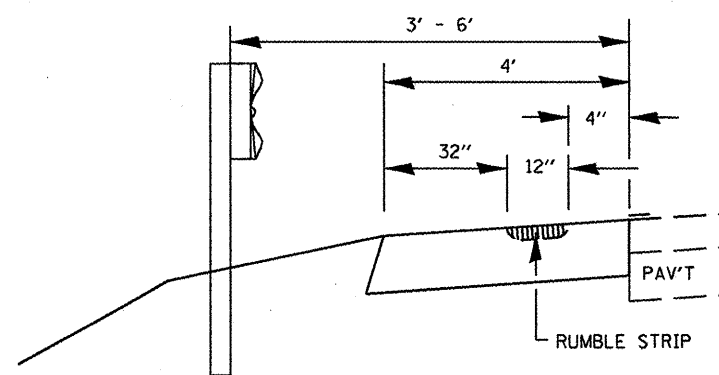
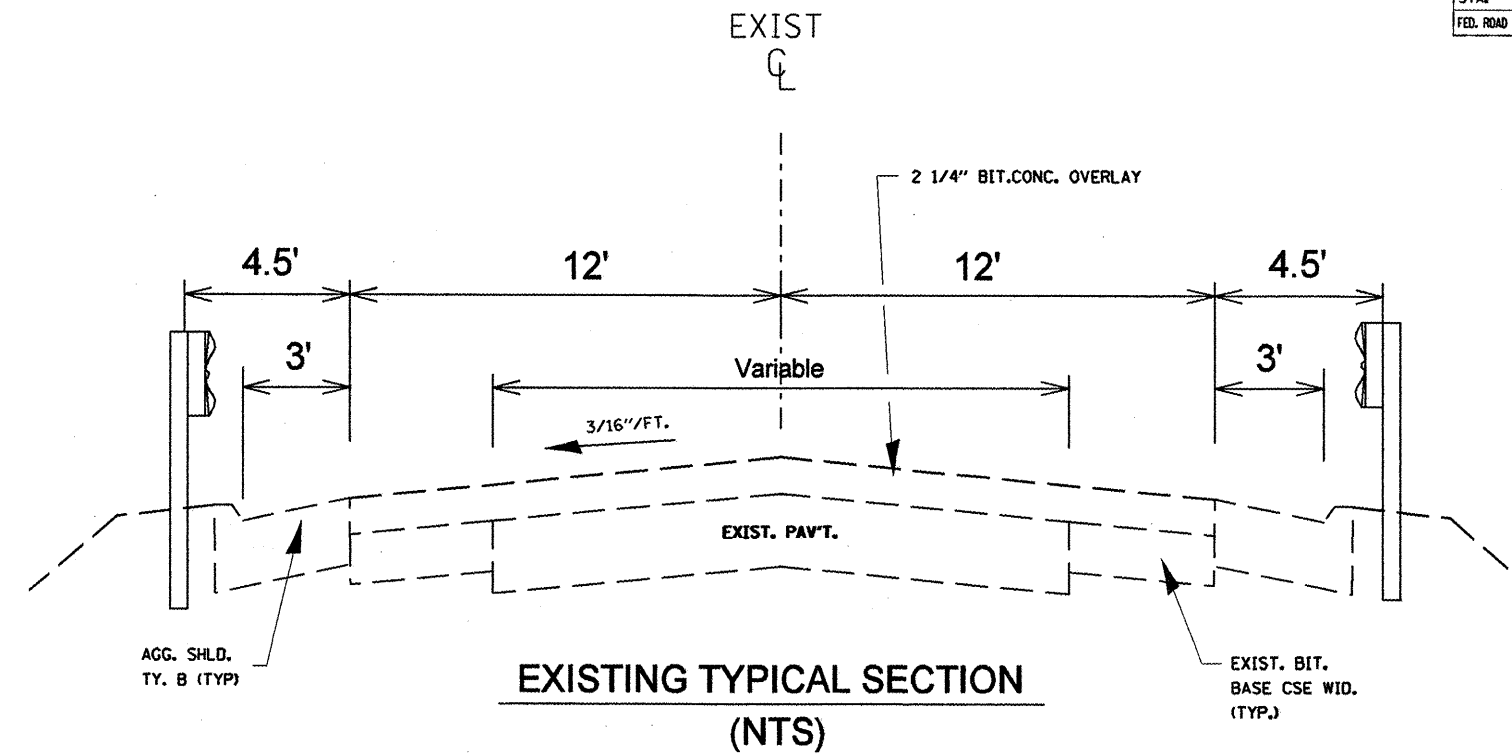
ILLINOIS DEPARTMENT OF TRANSPORTATION

TYPICAL SECTION 4

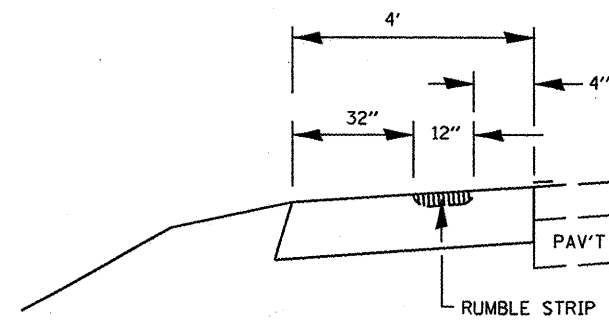
SCALE: VERT. / HORIZ.
DATE / DRAWN BY / CHECKED BY

LT	124+63	124+78	guardrail/erosion control curb
LT	124+78	125+06	Bridge Ommision SN 078-0033
LT	125+06	133+02	guardrail/erosion control curb
RT	124+78	125+06	Bridge Ommision SN 078-0033
RT	125+06	135+24	guardrail/erosion control curb

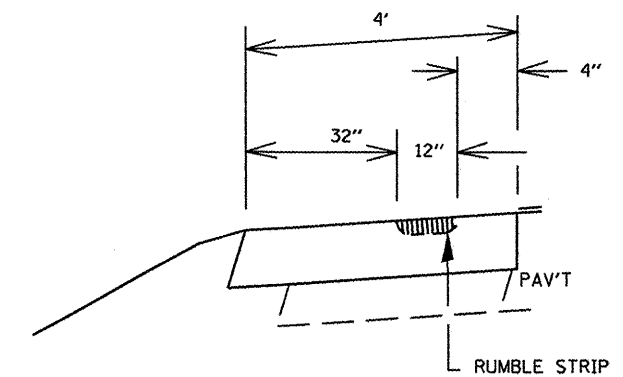
F.A.P. RTE.	SECTION	COUNTY	TOTAL SHEETS	SHEET NO.
653	105I-1	PUTNAM	24	8
STA.		TO STA.		
FED. ROAD DIST. NO.		ILLINOIS FED. AID PROJECT		



SHOULDER DETAIL 3 (NTS)



SHOULDER DETAIL 2 (NTS)



SHOULDER DETAIL 1 (NTS)

DATE = 3/19/2008
 FILE NAME = S:\GEN\DRW\T\STOMP\AS\SHOULDR\68768\68768.dgn
 PLOT SCALE = 1/8"=1'-0"
 USER NAME = bjoymc

REVISIONS	
NAME	DATE

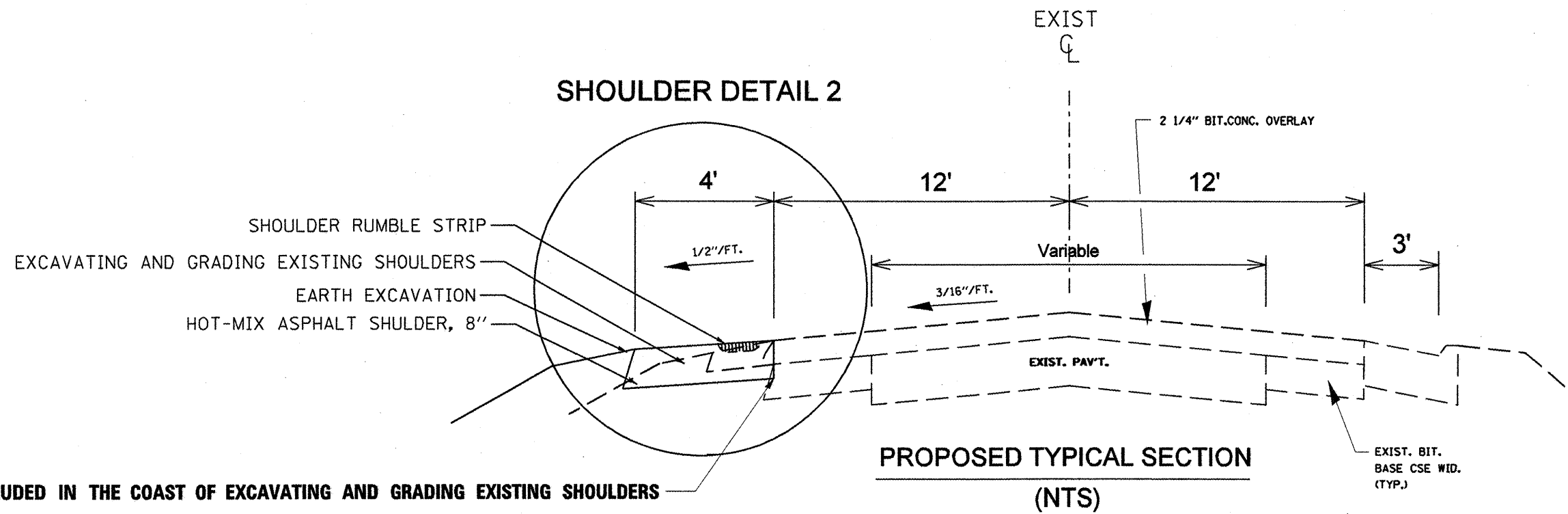
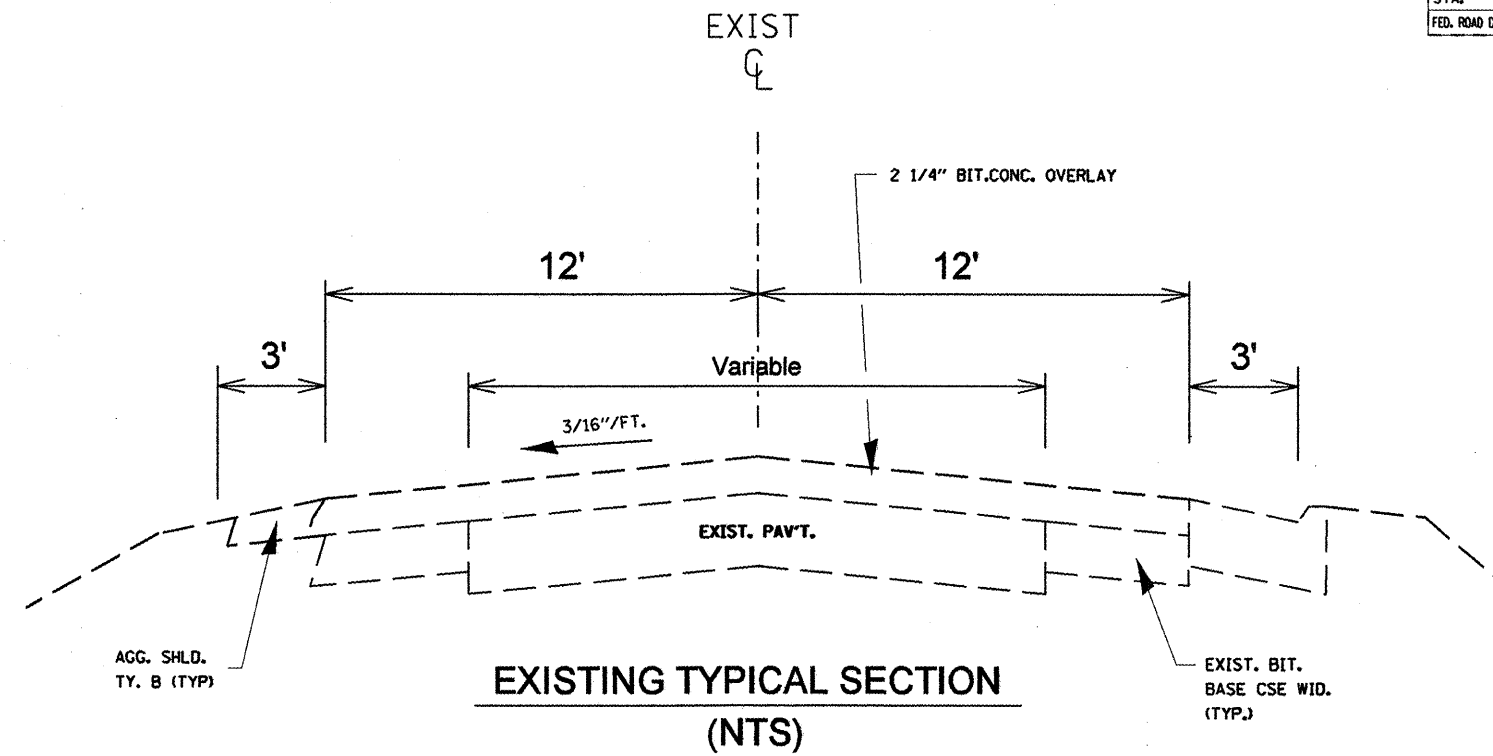
ILLINOIS DEPARTMENT OF TRANSPORTATION

TYPICAL SECTION 5 & SHOULDER DETAILS

SCALE: VERT. _____
 HORIZ. _____
 DATE _____

DRAWN BY _____
 CHECKED BY _____

F.A.P. RTE.	SECTION	COUNTY	TOTAL SHEETS	SHEET NO.
653	105I-1	PUTNAM	24	9
STA.		TO STA.		
FED. ROAD DIST. NO.		ILLINOIS FED. AID PROJECT		



SAW CUT COST SHALL BE INCLUDED IN THE COAST OF EXCAVATING AND GRADING EXISTING SHOULDERS

RT	135+24	140+52	erosion control curb
----	--------	--------	----------------------

REVISIONS	
NAME	DATE

ILLINOIS DEPARTMENT OF TRANSPORTATION

TYPICAL SECTION 6

SCALE: VERT. / HORIZ. / DATE

DRAWN BY / CHECKED BY

PLOT DATE = 3/19/2008
 PLOT SCALE = 1/8" = 10'-0"
 USER NAME = bogyne

F.A.P. RTE.	SECTION	COUNTY	TOTAL SHEETS	SHEET NO.
653	1051-1	PUTNAM	24	10
STA.		TO STA.		
FED. ROAD DIST. NO.		ILLINOIS FED. AID PROJECT		

20200600 EXCAVATING AND GRADING EXISTING SHOULDERS						
	LOCATION			Length	Units	
	STA.	to	STA.			
LT	45+00		52+52.43	752.43	7.5	
*LT	52+52.43		59+05.54	Inside Curve 2 existing additional 3' widening	653.11	6.5
LT	59+05.54		81+65.50		2259.96	22.6
LT	81+65.50		82+34.23	Bridge Omission SN 078 - 0013		
LT	82+34.23		104+00.86		2166.63	21.7
*LT	104+00.86		111+87.53	Inside Curve 4 existing additional 3' widening	786.67	7.9
LT	111+87.53		124+78		1290.47	12.9
LT	124+78		125+06	Bridge Omission SN 078 - 0033		
LT	125+06		133+02	Erosion Control Curb Omission		
LT	133+02		200+00		6698	67.0
*RT	45+00		48+54.74	Inside Curve 1 existing additional 3' widening	354.74	3.5
RT	48+54.74		58+92.49		1037.75	10.4
*RT	58+92.49		65+79.53	Inside Curve 3 existing additional 3' widening	687.04	6.9
RT	65+79.53		81+65.50		1585.97	15.9
RT	81+65.50		82+34.23	Bridge Omission SN 078 - 0013		
RT	82+34.23		124+78		4243.77	42.4
RT	124+78		125+06	Bridge Omission SN 078 - 0033		
RT	125+06		140+52	Erosion Control Curb Omission		
RT	140+52		200+00		5948	59.5
* 3' ADDITIONAL WIDENING ON INSIDE OF CURVES				TOTAL	28464.54	285

20201006 GRADING AND SHAPING SHOULDERS						
	LOCATION			Length	Units	
	STA.	to	STA.			
LT	45+00		52+52.43	752.43	7.5	
*LT	52+52.43		59+05.54	Inside Curve 2 existing additional 3' widening	653.11	6.5
LT	59+05.54		81+65.50		2259.96	22.6
LT	81+65.50		82+34.23	Bridge Omission SN 078 - 0013		
LT	82+34.23		104+00.86		2166.63	21.7
*LT	104+00.86		111+87.53	Inside Curve 4 existing additional 3' widening	786.67	7.9
LT	111+87.53		124+78		1290.47	12.9
LT	124+78		125+06	Bridge Omission SN 078 - 0033		
LT	125+06		133+02	Erosion Control Curb Omission		
LT	133+02		200+00		6698	67.0
*RT	45+00		48+54.74	Inside Curve 1 existing additional 3' widening	354.74	3.5
RT	48+54.74		58+92.49		1037.75	10.4
*RT	58+92.49		65+79.53	Inside Curve 3 existing additional 3' widening	687.04	6.9
RT	65+79.53		81+65.50		1585.97	15.9
RT	81+65.50		82+34.23	Bridge Omission SN 078 - 0013		
RT	82+34.23		124+78		4243.77	42.4
RT	124+78		125+06	Bridge Omission SN 078 - 0033		
RT	125+06		140+52	Erosion Control Curb Omission		
RT	140+52		200+00		5948	59.5
* 3' ADDITIONAL WIDENING ON INSIDE OF CURVES				TOTAL	28464.54	285

25000210 SEEDING, CLASS 2A						
	LOCATION			Length	Units	ACRE
	STA.	to	STA.			
	45+00		200+00			
TOTAL						3.3

25000400 NITROGEN FERTILIZER NUTRIENT						
	LOCATION			Length	Units	POUND
	STA.	to	STA.			
	45+00		200+00			
TOTAL						297

25000500 PHOSPHORUS FERTILIZER NUTRIENT						
	LOCATION			Length	Units	POUND
	STA.	to	STA.			
	45+00		200+00			
TOTAL						297

25000600 POTASSIUM FERTILIZER NUTRIENT						
	LOCATION			Length	Units	POUND
	STA.	to	STA.			
	45+00		200+00			
TOTAL						297

25100105 MULCH, METHOD 1						
	LOCATION			Length	Units	ACRE
	STA.	to	STA.			
	45+00		200+00			
TOTAL						3.3

28000500 INLET & PIPE PROTECTION						
	LOCATION			Length	Units	EA
	STA.	to	STA.			
	45+00		200+00			
TOTAL						20

440000920 BITUMINOUS CONCRETE SHOULDER REMOVAL						
	LOCATION			Length	Units	SQ YD
	STA.	to	STA.			
*LT	52+52.43		59+05.54	Inside Curve 2 existing additional 3' widening	653.11	217.70
*LT	104+00.86		111+87.53	Inside Curve 4 existing additional 3' widening	786.67	262.22
*RT	45+00		48+54.74	Inside Curve 1 existing additional 3' widening	354.74	118.25
*RT	58+92.49		65+79.53	Inside Curve 3 existing additional 3' widening	687.04	229.01
* 3' ADDITIONAL WIDENING ON INSIDE OF CURVES				TOTAL		827.19

48203029 HOT-MIX ASPHALT SHOULDERS, 8"						
	LOCATION			Length	Units	SQ YD
	STA.	to	STA.			
LT	45+00		52+52.43			334.41
*LT	52+52.43		59+05.54	Inside Curve 2 existing additional 3' widening	653.11	290.27
LT	59+05.54		81+65.50		2259.96	1004.43
LT	81+65.50		82+34.23	Bridge Omission SN 078 - 0013		
LT	82+34.23		104+00.86		2166.63	962.95
*LT	104+00.86		111+87.53	Inside Curve 4 existing additional 3' widening	786.67	349.63
LT	111+87.53		124+78		1290.47	573.54
LT	124+78		125+06	Bridge Omission SN 078 - 0033		
LT	125+06		133+02	Erosion Control Curb Omission		
LT	133+02		200+00		6698	2976.89
*RT	45+00		48+54.74	Inside Curve 1 existing additional 3' widening	354.74	157.66
RT	48+54.74		58+92.49		1037.75	461.22
*RT	58+92.49		65+79.53	Inside Curve 3 existing additional 3' widening	687.04	305.35
RT	65+79.53		81+65.50		1585.97	704.88
RT	81+65.50		82+34.23	Bridge Omission SN 078 - 0013		
RT	82+34.23		124+78		4243.77	1886.12
RT	124+78		125+06	Bridge Omission SN 078 - 0033		
RT	125+06		140+52	Erosion Control Curb Omission		
RT	140+52		200+00		5948	2643.56
* 3' ADDITIONAL WIDENING ON INSIDE OF CURVES				TOTAL		12650.91

64200105 SHOULDER RUMBLE STRIP						
	LOCATION			Length	Units	FT
	STA.	to	STA.			
LT	45+00		81+65.50			3665.5
LT	81+65.50		82+34.23	Bridge Omission SN 078 - 0013		
LT	82+34.23		124+78		4243.77	4243.77
LT	124+78		125+06	Bridge Omission SN 078 - 0033		
LT	125+06		133+02	Erosion Control Curb Omission		
LT	133+02		200+00		6698	6698
RT	45+00		81+65.50		3665.5	3665.5
RT	81+65.50		82+34.23	Bridge Omission SN 078 - 0013		
RT	82+34.23		124+78		4243.77	4243.77
RT	124+78		125+06	Bridge Omission SN 078 - 0033		
RT	125+06		140+52	Erosion Control Curb Omission		
RT	140+52		200+00		5948	5948
TOTAL						28464.54

REVISIONS		ILLINOIS DEPARTMENT OF TRANSPORTATION	
NAME	DATE		

SCHEDULES OF QUANTITIES

SCALE: VERT. _____
 HORIZ. _____

DRAWN BY _____
 CHECKED BY _____

F.A.P. RTE.	SECTION	COUNTY	TOTAL SHEETS	SHEET NO.
653	105I-1	PUTNAM	24	11
STA.		TO STA.		
FED. ROAD DIST. NO.		ILLINOIS FED. AID PROJECT		

67100100 MOBILIZATION					
LOCATION					L SUM
STA.	to	STA.			
45+00		200+00			1
TOTAL					1

70100460 TRAFFIC CONTROL AND PROTECTION, STANDARD 701306					
LOCATION					L SUM
STA.	to	STA.			
45+00		200+00			1
TOTAL					1

70100500 TRAFFIC CONTROL AND PROTECTION, STANDARD 701326					
LOCATION					L SUM
STA.	to	STA.			
45+00		200+00			1
TOTAL					1

70103815 TRAFFIC CONTROL SURVEILLANCE					
LOCATION					CAL DA
STA.	to	STA.			
45+00		200+00			20
TOTAL					20

63300205 REM. AND REIN. OF EXIST. STEEL PLATE BEAM GUARD RAIL, TYPE A					
LOCATION	Typical Section	Qty.			
STA.	to	STA.	FT.		
LT 7915.5		8165.5	4	250.0	
LT 8234.23		8429	4	194.8	
LT 12283		12463	4	180.0	
LT 13302		13387	4	85.0	
RT 8001		8165.5	4	164.5	
RT 8234.23		8484.23	4	250.0	
RT 12228		12478	4	250.0	
Total				1374.3	

X0301512 GUARDRAIL AGGREGATE EROSION CONTROL					
LOCATION	Typical Section	Aggregate Tons			
STA.	to	STA.			
LT 7915.5		8165.5	4	50.6	
LT 8234.23		8429	4	39.4	
LT 12283		12463	4	36.4	
LT 13302		13387	4	17.2	
RT 8001		8165.5	4	33.3	
RT 8234.23		8484.23	4	50.6	
RT 12228		12478	4	50.6	
TOTAL				278.3	

78201000 TERMINAL MARKER - DIRECT APPLIED					
63100167 TRAFFIC BARRIER TERMINAL TYPE 1, SPECIAL (TANGENT)					
LOCATION	Qty.				
STA.	EACH				
LT 67+29	1				
LT 74+42	1				
LT 84+29	1				
LT 89+68	1				
LT 91+58	1				
LT 94+80	1				
LT 98+18	1				
LT 102+14	1				
LT 113+49	1				
LT 115+02	1				
LT 115+55	1				
LT 120+46	1				
LT 122+83	1				
LT 142+37	1				
LT 144+32	1				
LT 147+97	1				
LT 150+24	1				
LT 162+33	1				
RT 48+54.74	1				
RT 50+71	1				
RT 55+99	1				
RT 64+55	1				
RT 65+92	1				
RT 80+01	1				
RT 86+67	1				
RT 89+20	1				
RT 90+94	1				
RT 94+11	1				
RT 97+86	1				
RT 101+29	1				
RT 109+26	1				
RT 113+49	1				
RT 142+90	1				
RT 157+68	1				
RT 161+91	1				
TOTAL				35	

Earthwork for construction of taper and platform is included in the cost for TRAFFIC BARRIER TERMINAL TY 1, SPECIAL (TANGENT)

78200410 GUARDRAIL MARKERS, TYPE A					
LOCATION	Qty.				
STA.	EACH				
TOTAL					35

PLOT DATE = 2/19/2008
 FILE NAME = S:\GEN\DRFT\STAIRPLNS\GUARD\68768-68768.dgn
 PLOT SCALE = 1/8"=1'-0"
 USER NAME = bojerry

REVISIONS	
NAME	DATE

ILLINOIS DEPARTMENT OF TRANSPORTATION

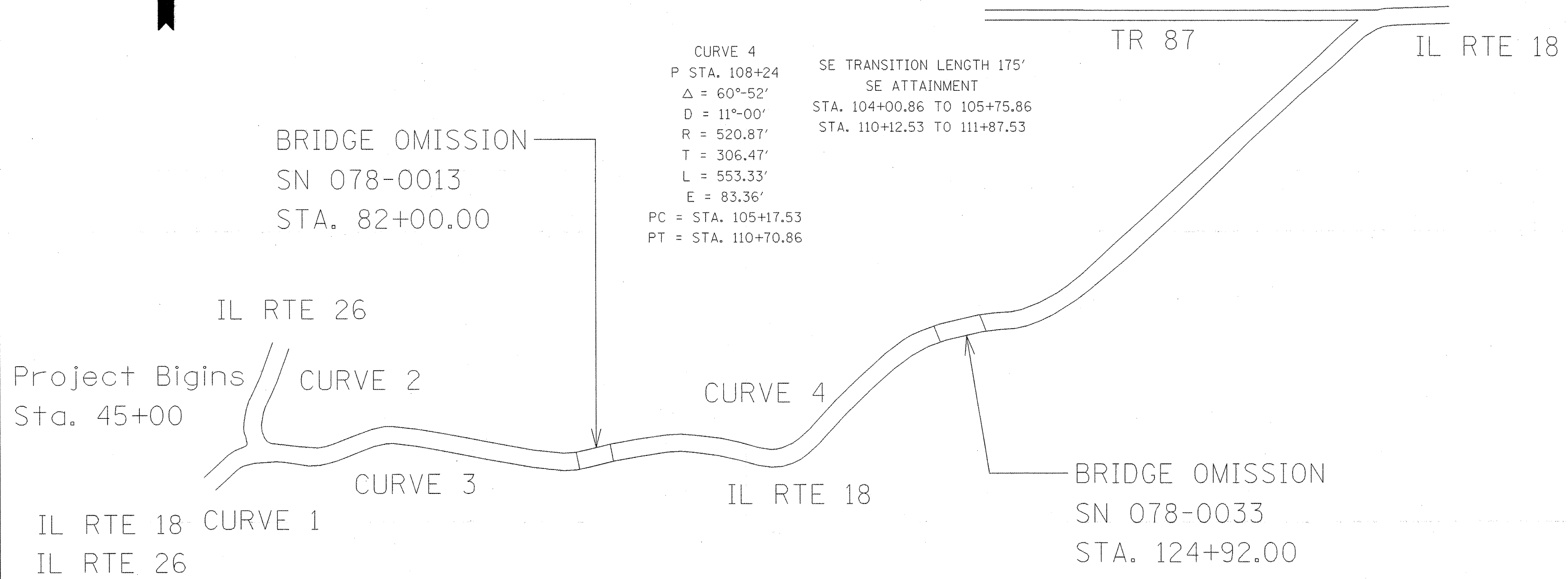
SCHEDULES OF QUANTITIES

SCALE: VERT. DRAWN BY
 DATE HORIZ. CHECKED BY

F.A.P. RTE.	SECTION	COUNTY	TOTAL SHEETS	SHEET NO.
653	105I-1	PUTNAM	24	12
STA.		TO STA.		
FED. ROAD DIST. NO.		ILLINOIS FED. AID PROJECT		

GEORGE S PARK
MEMORIAL WOODS
NATURE PRESERVE

Project Ends
Sta. 200+00



CURVE 4
P STA. 108+24
 $\Delta = 60^{\circ}-52'$
D = 11 $^{\circ}$ -00'
R = 520.87'
T = 306.47'
L = 553.33'
E = 83.36'
PC = STA. 105+17.53
PT = STA. 110+70.86

SE TRANSITION LENGTH 175'
SE ATTAINMENT
STA. 104+00.86 TO 105+75.86
STA. 110+12.53 TO 111+87.53

BRIDGE OMISSION
SN 078-0013
STA. 82+00.00

BRIDGE OMISSION
SN 078-0033
STA. 124+92.00

CURVE 1
PI STA. 43+73.60
 $\Delta = 72^{\circ}-00'$
D = 8 $^{\circ}$ -20'
R = 687.55'
T = 499.53'
L = 864'
E = 688.16
PC = STA. 38+74.07
PT = STA. 47+38.07

SE TRANSITION LENGTH 175'
SE ATTAINMENT
STA. 37+57.40 TO 39+32.40
STA. 46+79.74 TO 48+54.74

CURVE 2
PI STA. 55+90
 $\Delta = 43^{\circ}-31'$
D = 10 $^{\circ}$ -22'
R = 553.45'
T = 220.90'
L = 419.77'
E = 42.45'
PC = STA. 53+69.10
PT = STA. 57+88.87

SE TRANSITION LENGTH 175'
SE ATTAINMENT
STA. 52+52.43 TO 54+27.43
STA. 57+30.54 TO 59+05.54

CURVE 3
PI STA. 62+50
 $\Delta = 47^{\circ}-02'$
D = 10 $^{\circ}$ -22'
R = 553.45'
T = 240.84'
L = 453.70'
E = 50.13'
PC = STA. 60+09.16
PT = STA. 64+62.86

SE TRANSITION LENGTH 175'
SE ATTAINMENT
STA. 58+92.49 TO 60+67.49
STA. 64+04.53 TO 65+79.53

PLOT DATE = 3/15/2008
FILE NAME = S:\GEN\DRFT\STAMP\NS\SMA013\68768\68768.dgn
USER NAME = bsperry

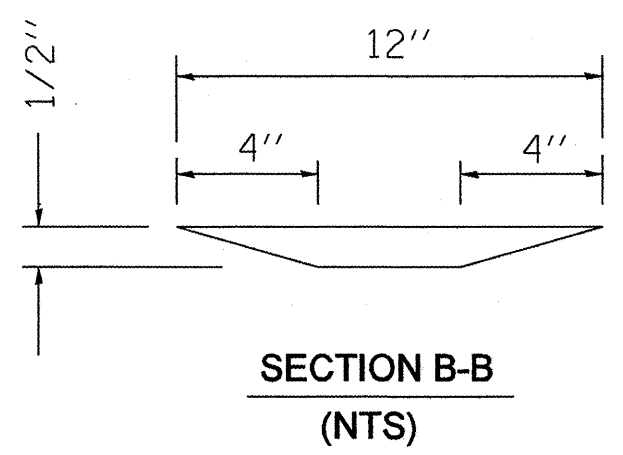
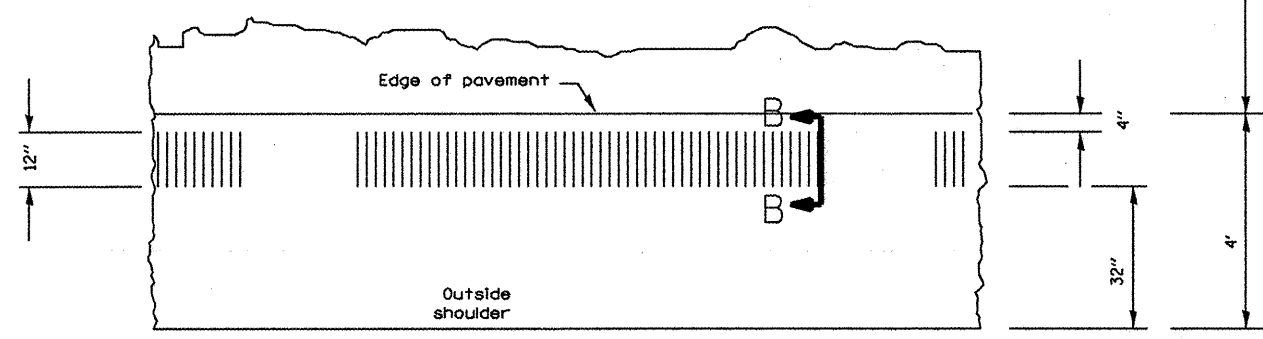
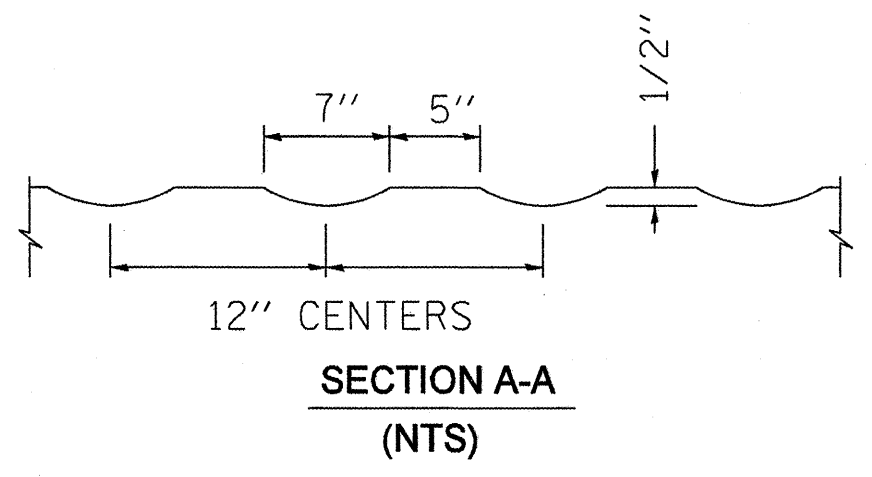
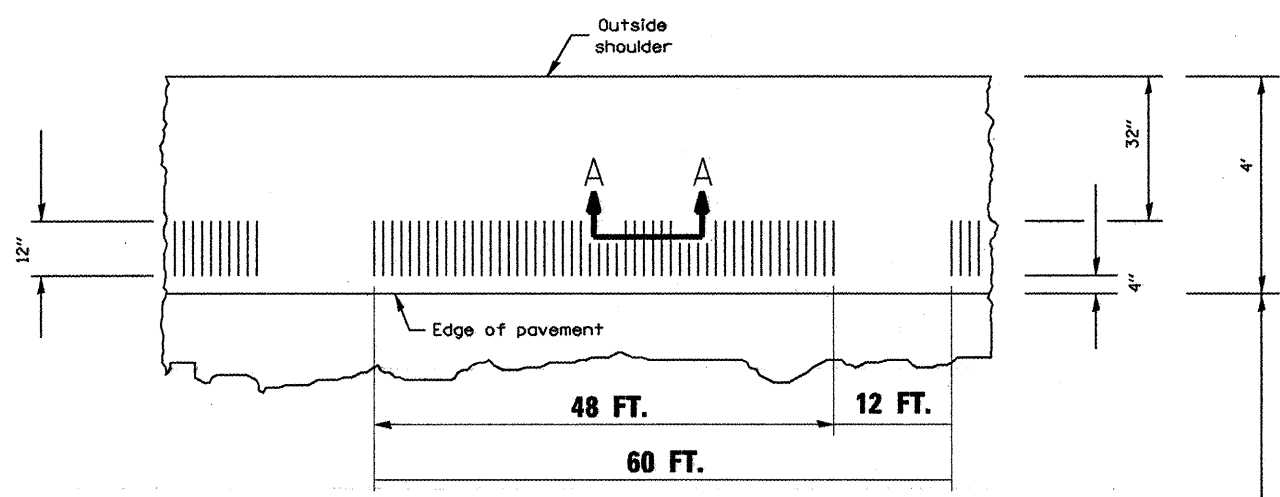
REVISIONS	
NAME	DATE

ILLINOIS DEPARTMENT OF TRANSPORTATION
LINE DIAGRAM / SWPPP
SCALE: VERT. / HORIZ.
DATE
DRAWN BY
CHECKED BY

F.A. RTE.	SECTION	COUNTY	TOTAL SHEETS	SHEET NO.
653	1051-1	PUTNAM	24	13
STA.		TO STA.		
FED. ROAD DIST. NO.		ILLINOIS FED. AID PROJECT		

GENERAL NOTES

1. THIS SANDARD GIVES CONSTRUCTION INSTALLATION DETAILS ONLY AND DOES NOT DETERMINE WHEN OR WHERE RUMBLESTRIPS ARE TO BE USED.
2. RUMBLE STRIPS SHALL BE OMMITED AT TURN AND AUXILARY LANES, ROAD APPROACHES, RESIDENCE, 250 FT. BEFORE ROAD INTERSECTIONS, AND OTHER INTERRUPTIONS AS DIRECTED BY THE PROJECT ENGINEER.



**PLAN
INTERMITTENT RUMBLE STRIP
(NTS)**

**SECTION B-B
(NTS)**

PLOT DATE = 3/14/2008
 PLOT SCALE = 1/8" = 1'-0"
 USER NAME = bryannj

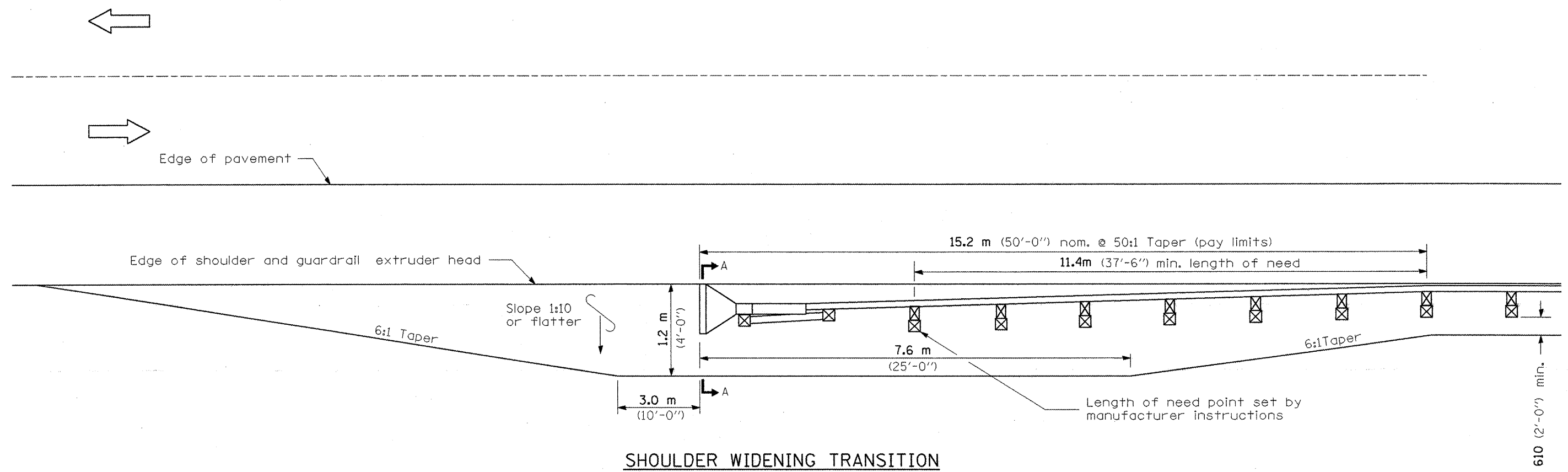
REVISIONS	
NAME	DATE

ILLINOIS DEPARTMENT OF TRANSPORTATION

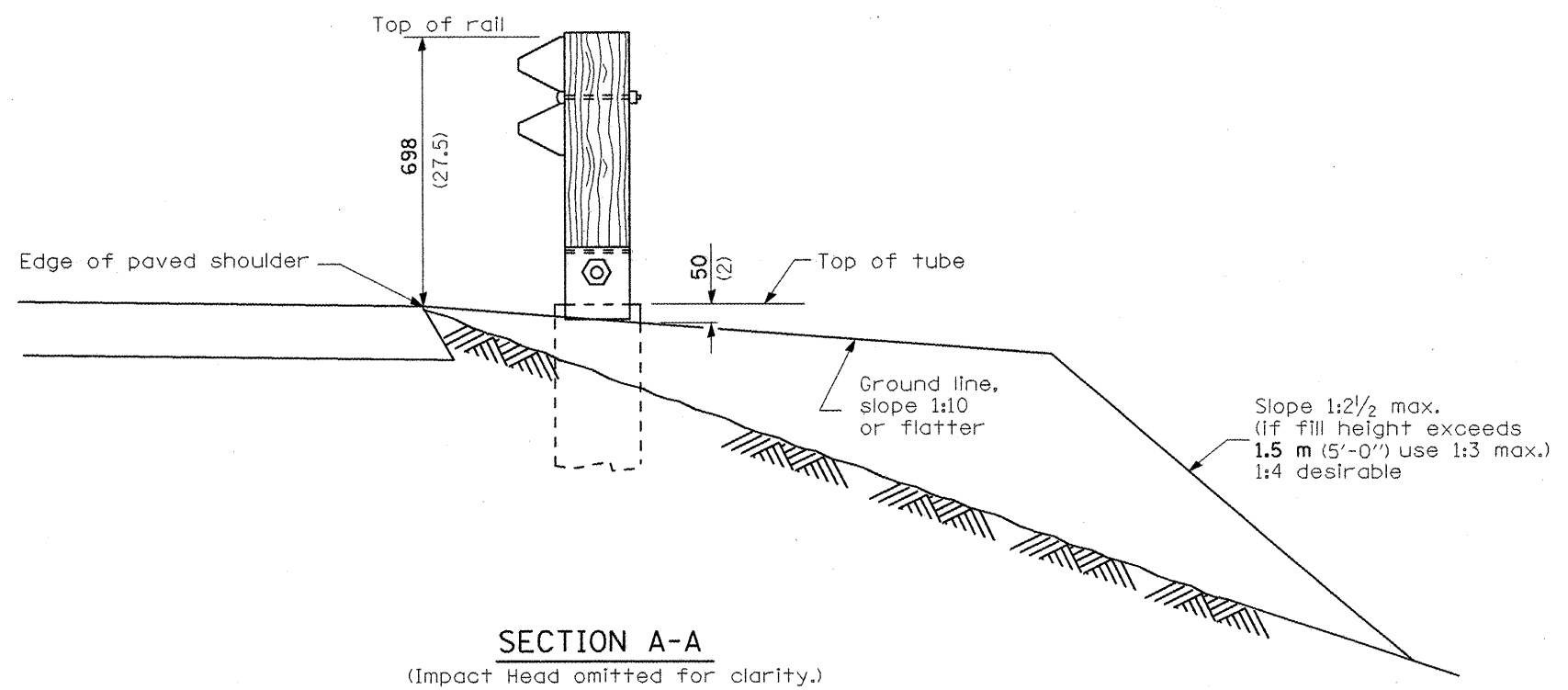
**INTERMITTENT
RUMBLE STRIP**

SCALE: VERT. DRAWN BY
 HORIZ. CHECKED BY
 DATE

F.A.P. RTE.	SECTION	COUNTY	TOTAL SHEETS	SHEET NO.
653	1051-1	PUTNAM	24	14
STA.		TO STA.		
FED. ROAD DIST. NO.		ILLINOIS FED. AID PROJECT		



SHOULDER WIDENING TRANSITION FOR TANGENT TERMINAL



SECTION A-A
(Impact Head omitted for clarity.)

GENERAL NOTES

50:1 Taper required so the guardrail head will not encroach on the shoulder.

All slope ratios are expressed as units of vertical displacement to units of horizontal displacement (V:H).

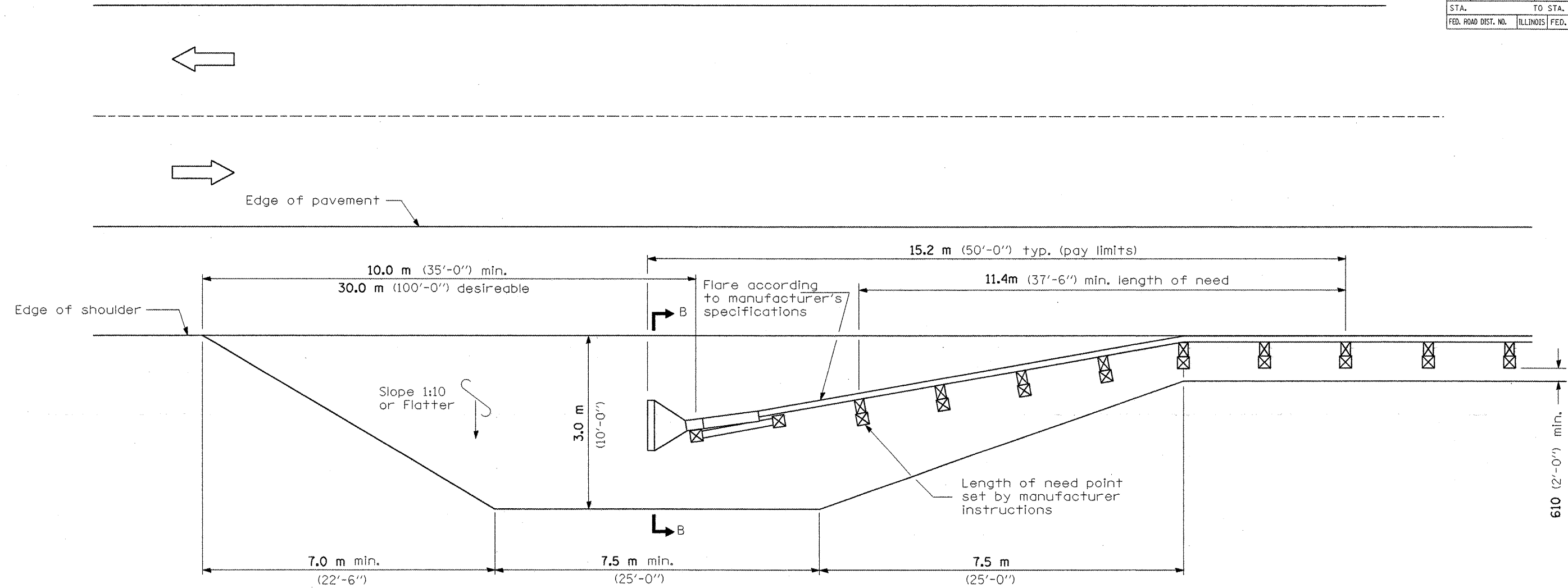
All dimensions are in millimeters (inches) unless otherwise shown.

REVISIONS	
NAME	DATE

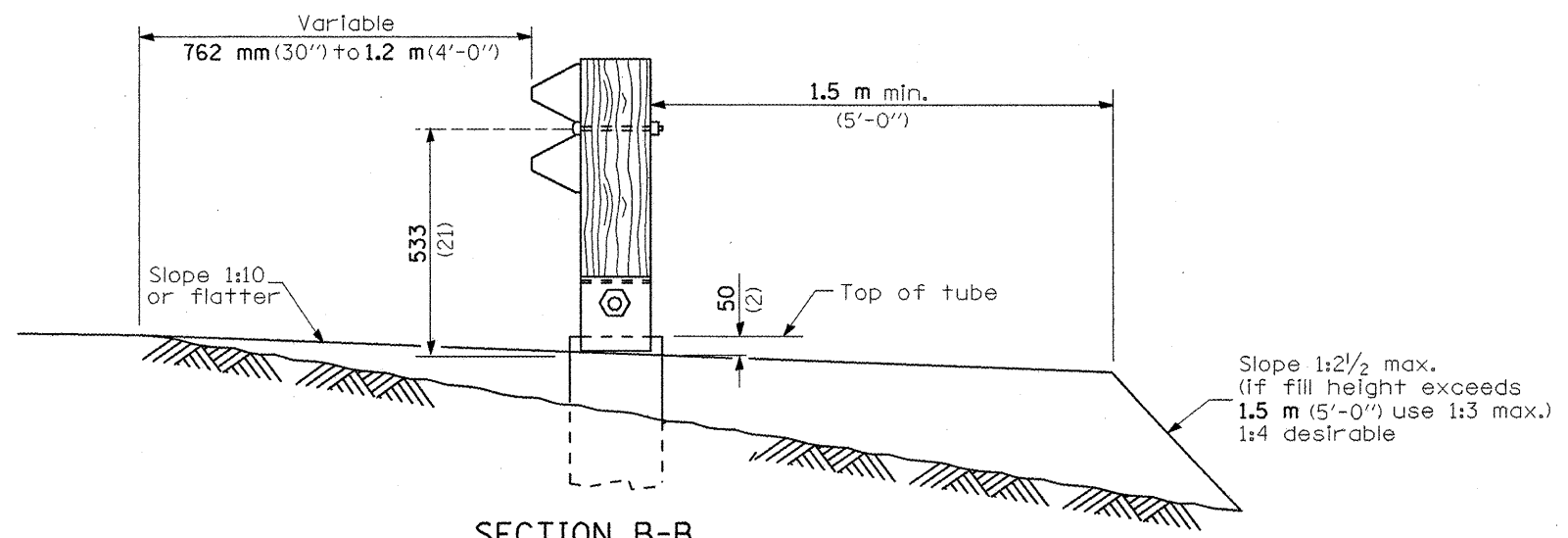
ILLINOIS DEPARTMENT OF TRANSPORTATION
SHOULDER WIDENING FOR TRAFFIC BARRIER TERMINALS TYPE 1 (SPECIAL)
 (Sheet 1 of 2)
 SCALE: VERT. _____
 HORIZ. _____
 DATE _____ DRAWN BY _____
 CHECKED BY _____

PLOT DATE = 3/19/2008
 FILE NAME = S:\GEN\ORAF\TAS\DR\PLNS\SDU013\68768\68768.dgn
 PLOT SCALE = 10.6889 / IN.
 USER NAME = boyeru

F.A.P. RTE.	SECTION	COUNTY	TOTAL SHEETS	SHEET NO.
653	105I-1	PUTNAM	24	15
STA.		TO STA.		
FED. ROAD DIST. NO.		ILLINOIS FED. AID PROJECT		



SHOULDER WIDENING TRANSITION FOR FLARED TERMINAL



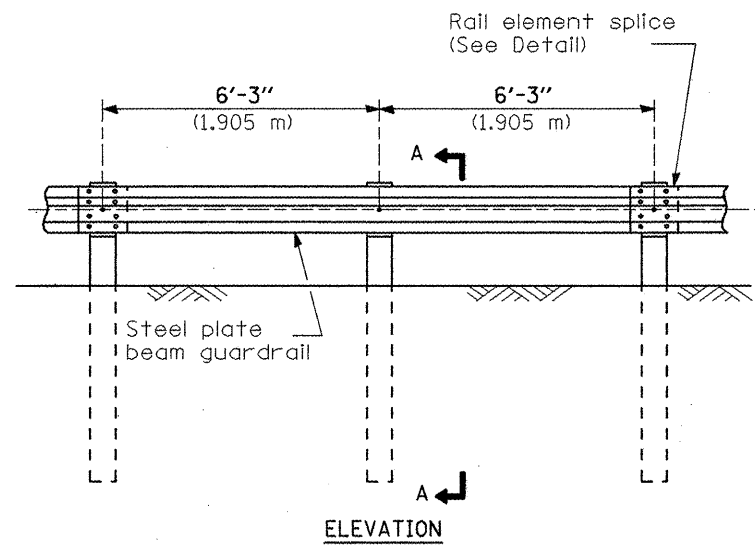
SECTION B-B
(Impact Head omitted for clarity.)

REVISIONS	
NAME	DATE

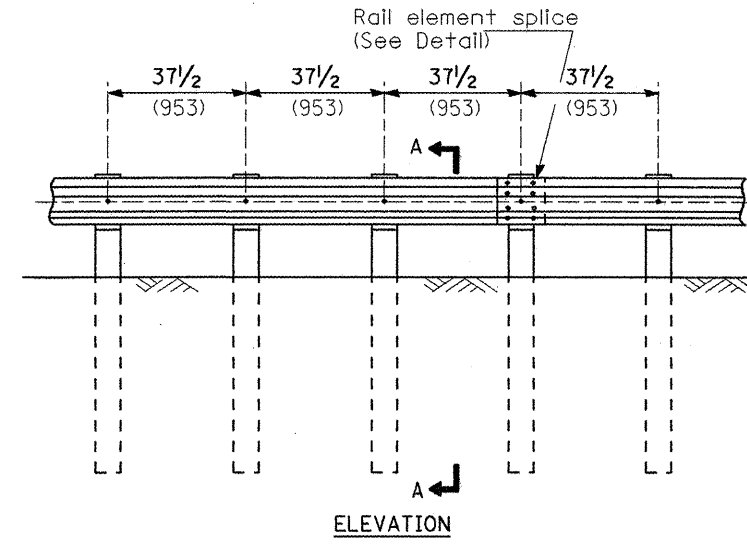
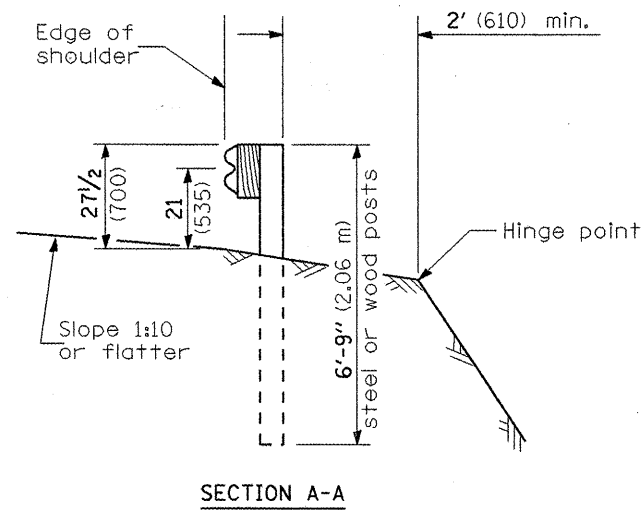
ILLINOIS DEPARTMENT OF TRANSPORTATION
SHOULDER WIDENING FOR TRAFFIC BARRIER TERMINALS TYPE 1 (SPECIAL)
 (Sheet 2 of 2)
 SCALE: VERT. _____
 HORIZ. _____
 DATE _____
 DRAWN BY _____
 CHECKED BY _____

PLOT DATE = 3/19/2008
 FILE NAME = S:\GEN\DRAWING\STD\PLANS\SQUARD\68768\68768.dgn
 PLOT SCALE = 10.0000 / IN.
 USER NAME = bojerry

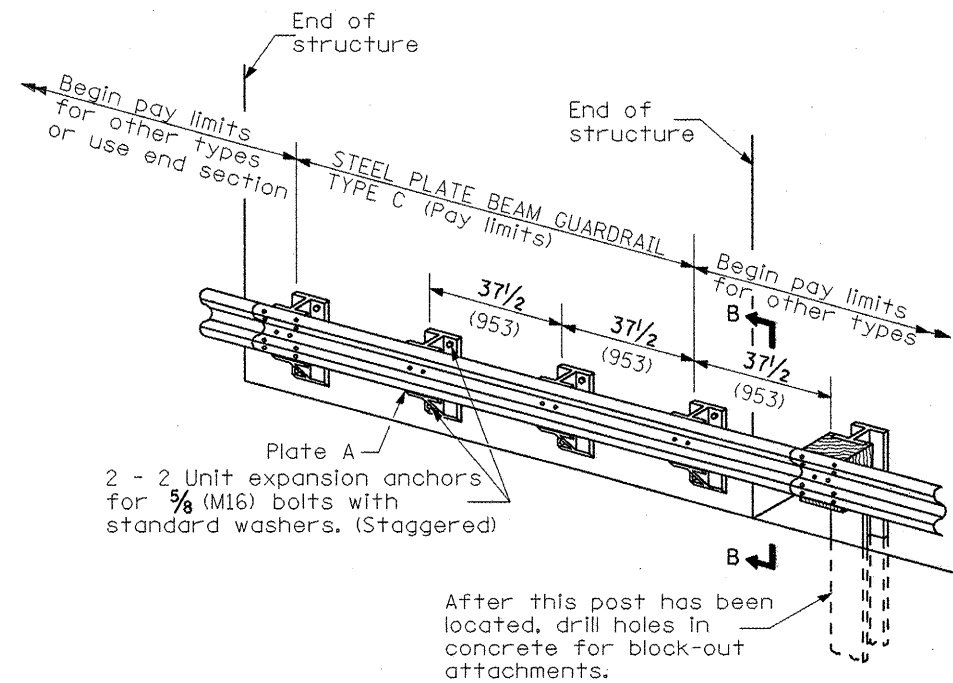
F.A. RTE. #	SECTION	COUNTY	TOTAL SHEETS	SHEET NO.
653	1051-1	PUTNAM	24	16
STA.		TO STA.		
FED. ROAD DIST. NO.		ILLINOIS FED. AID PROJECT		



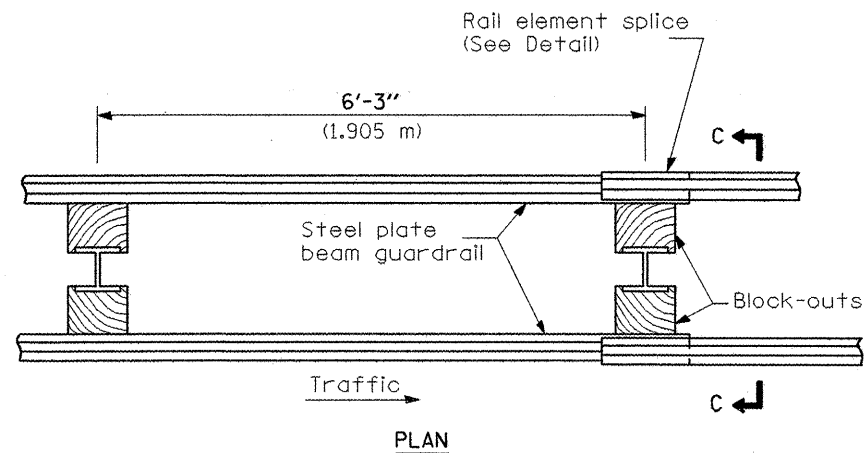
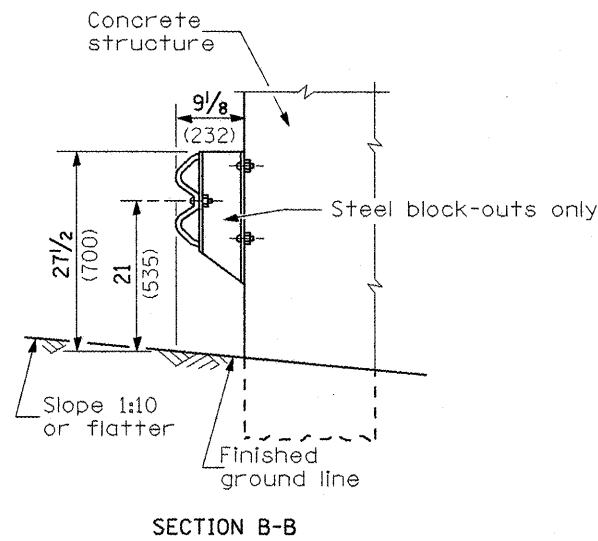
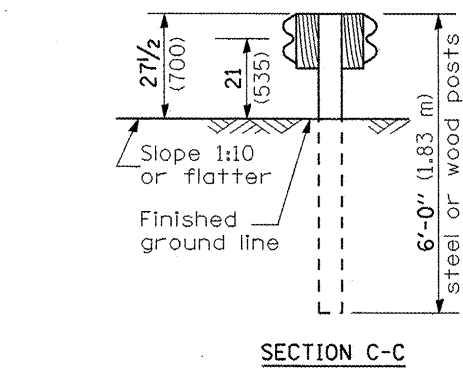
TYPE A
6'-3" (1.905 m) Typical post spacing



TYPE B
37 1/2 (953) Closed post spacing



TYPE C
37 1/2 (953) Block-out spacing



TYPE D
Double steel plate beam guardrail
6'-3" (1.905 m) typical post spacing

GENERAL NOTES

All slope ratios are expressed as units of vertical displacement to units of horizontal displacement (V:H).

All dimensions are in millimeters (Inches) unless otherwise shown.

The existing steel posts may be drilled to match the bolt pattern shown herein for the wood block-out, or a new steel post shall be provided.

This detail is applicable to the guardrail system used prior to January 1, 2007. For details on the Midwest Guardrail System, see Standard 630001.

All dimensions are in inches (millimeters) unless otherwise noted.

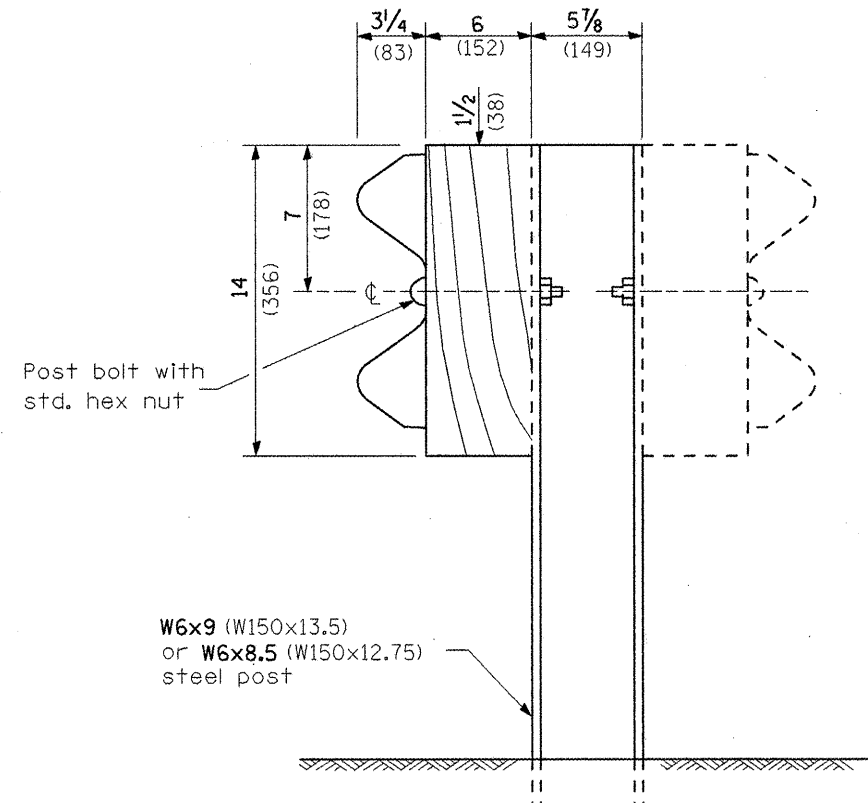
DATE	REVISIONS	BY
3-1-07	NEW DETAIL	RJD

ILLINOIS DEPARTMENT OF TRANSPORTATION	
DISTRICT CADD STANDARD	
REMOVE AND REERECT STEEL PLATE BEAM GUARDRAIL	
CADD STD. 630011-D4(1)	SHEET 1 OF 4
SCALE: NOT DRAWN TO SCALE	DRAWN BY: CADD
DATE **DATE**	CHECKED BY:

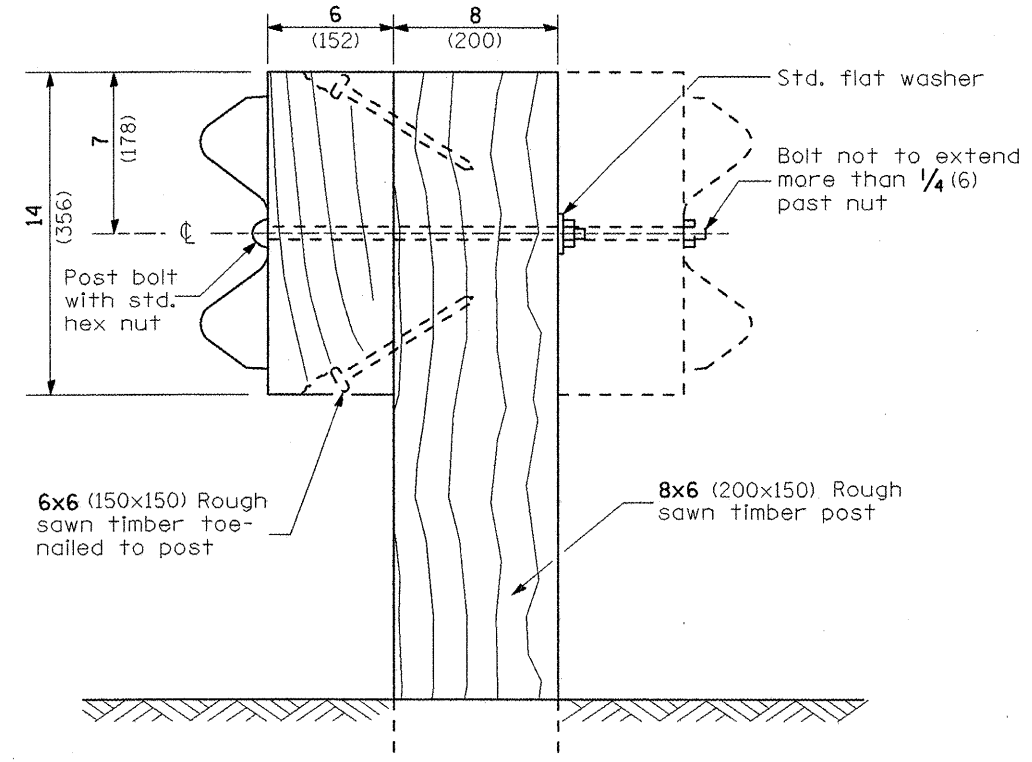
DESIGNER NOTE: Use this CADD Standard when removing and re-erecting existing guardrail that was originally installed prior to January 1, 2007. Note this is only for removing and re-erecting so the 27 1/2" height is maintained. If installing new guardrail use the State Standard.

\$\$\$DATE\$\$\$

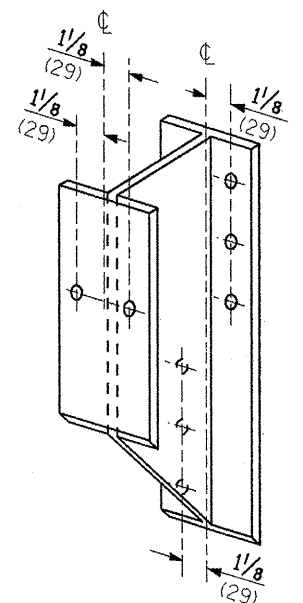
F.A. RTE.	SECTION	COUNTY	TOTAL SHEETS	SHEET NO.
653	1051-1	PUTNAM	24	17
STA.		TO STA.		
FED. ROAD DIST. NO.	ILLINOIS	FED. AID PROJECT		



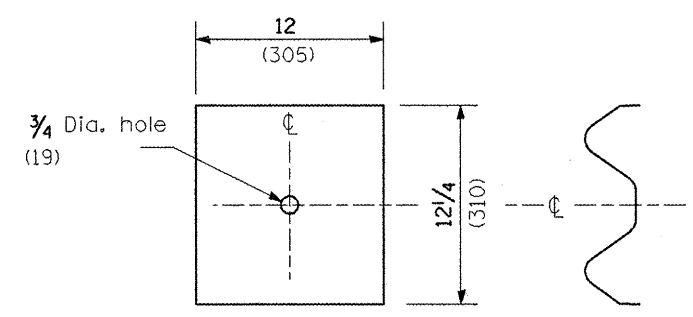
STEEL POST CONSTRUCTION



WOOD POST CONSTRUCTION



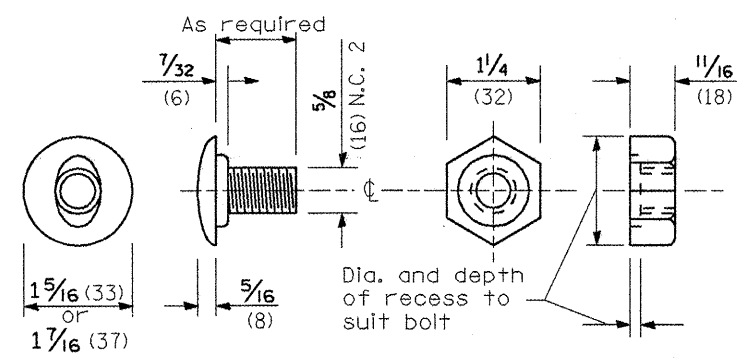
STEEL BLOCK-OUT DETAIL



NOTE

Plate A shall be placed between rail element and block-out at non-splice mounting points only when steel block-outs are used.

PLATE A



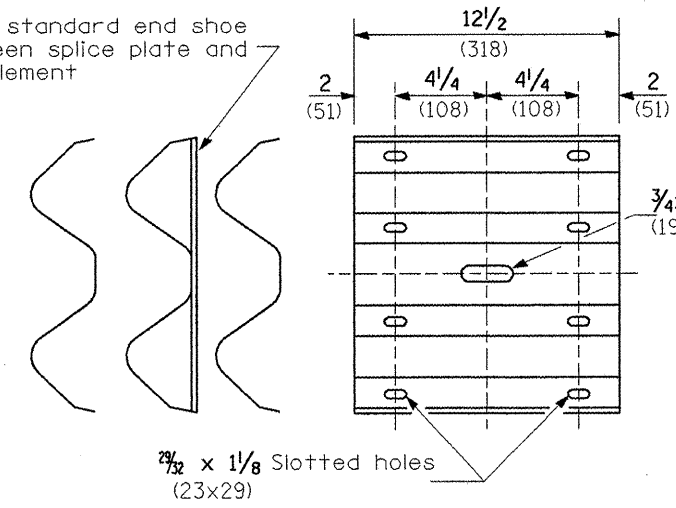
POST OR SPLICE BOLT & NUT

All dimensions are in inches (millimeters) unless otherwise noted.

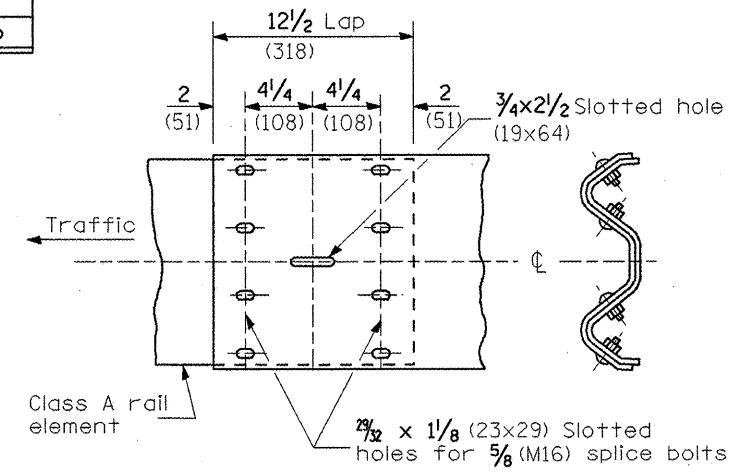
ILLINOIS DEPARTMENT OF TRANSPORTATION	
DISTRICT CADD STANDARD	
REMOVE AND REERECT STEEL PLATE BEAM GUARDRAIL	
CADD STD. 630011-D4(2)	SHEET 2 OF 4
SCALE: NOT DRAWN TO SCALE	DRAWN BY: CADD
DATE **DATE**	CHECKED BY:

F.A. RTE.	SECTION	COUNTY	TOTAL SHEETS	SHEET NO.
653	1051-1	PUTNAM	24	18
STA.		TO STA.		
FED. ROAD DIST. NO.	ILLINOIS	FED. AID PROJECT		

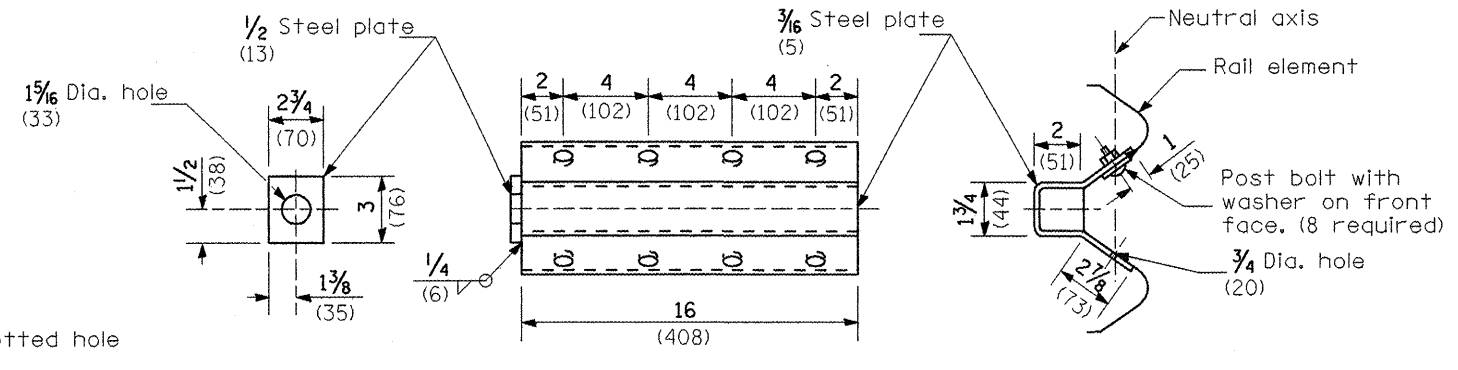
Place standard end shoe between splice plate and rail element



SPLICE PLATE

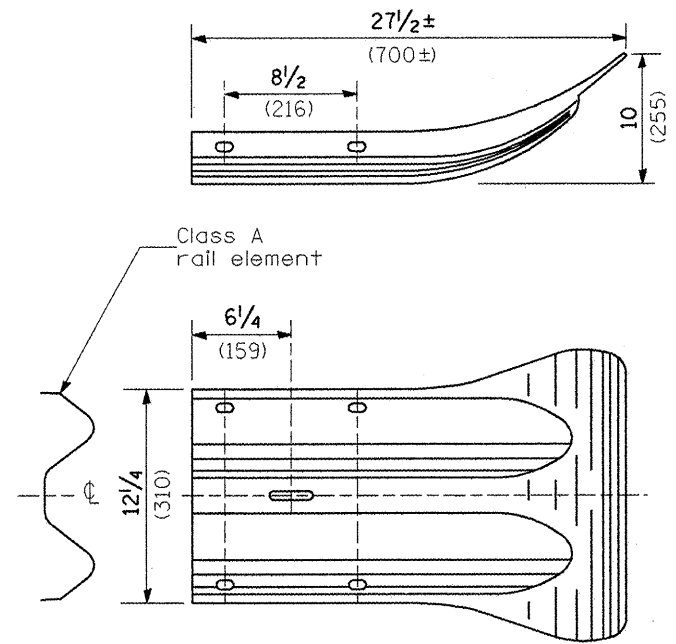


RAIL ELEMENT SPLICE

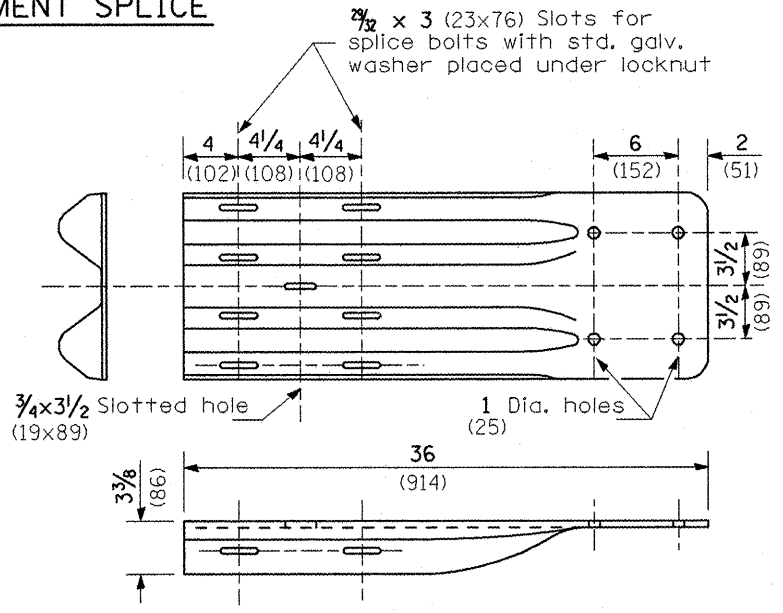


NOTE
Anchor plate T shall be used to attach cable assembly to guardrail when required on traffic barrier terminals.

ANCHOR PLATE T DETAILS



END SECTION



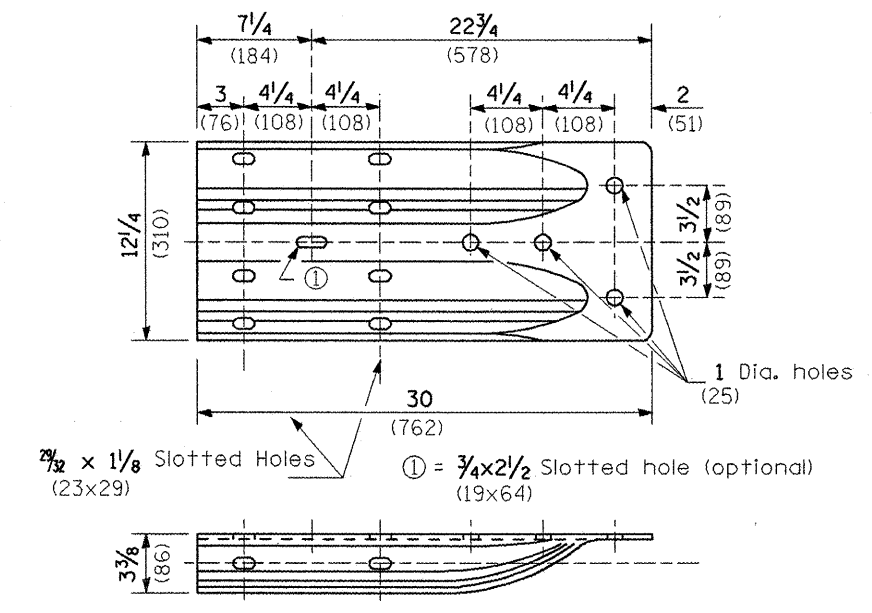
NOTE

When end shoe is attached to a bridge parapet which has an expansion joint, the bolts shall be provided with a locknut or double nut and shall be tightened only to a point that will allow guardrail movement.

The standard end shoe shall be attached to the concrete with pre-drilled or self-drilling anchor bolts. The anchor cone shall be set flush with the surface of the concrete.

Externally threaded studs protruding from the surface of the concrete will not be permitted.

END SHOE

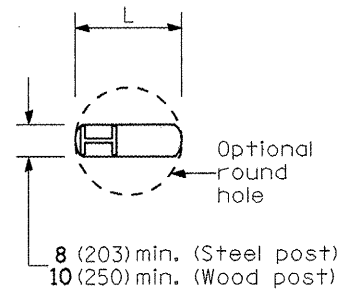


ALTERNATE END SHOE

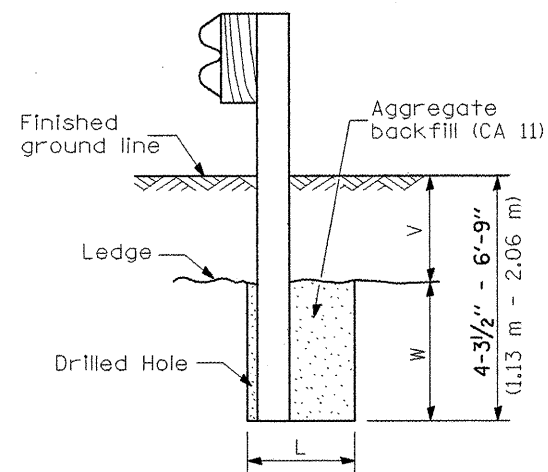
All dimensions are in inches (millimeters) unless otherwise noted.

ILLINOIS DEPARTMENT OF TRANSPORTATION	
DISTRICT CADD STANDARD	
REMOVE AND REERECT STEEL PLATE BEAM GUARDRAIL	
CADD STD. 630011-D4(3)	SHEET 3 OF 4
SCALE: NOT DRAWN TO SCALE	DRAWN BY: CADD
DATE: **DATE**	CHECKED BY:

F.A. RTE.	SECTION	COUNTY	TOTAL SHEETS	SHEET NO.
653	1051-1	PUTNAM	24	19
STA.		TO STA.		
FED. ROAD DIST. NO.	ILLINOIS	FED. AID PROJECT		

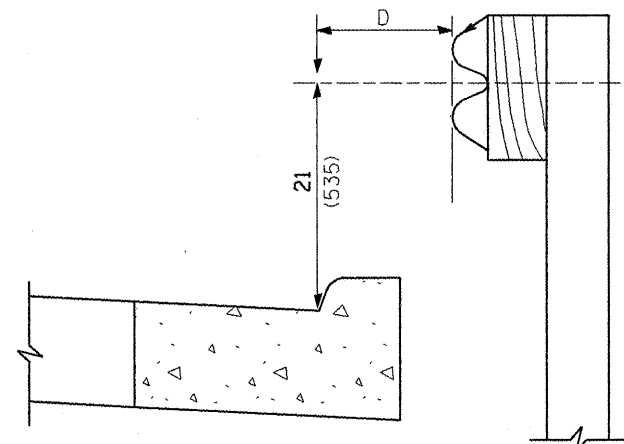


PLAN



ELEVATION

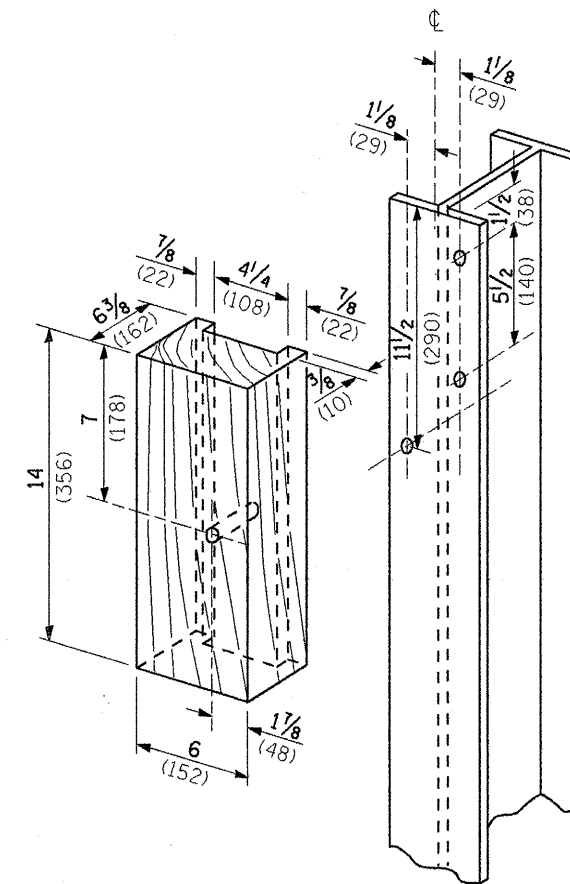
FOOTING FOR POST WHEN IMPERVIOUS MATERIAL IS ENCOUNTERED



Note:
If it is necessary for D to be more than 12 (300) and less than 10'-0" (3.0 m) type M-2 (M-5) curb and gutter (Std. 606001) shall be used in front of and in advance of the guardrail.

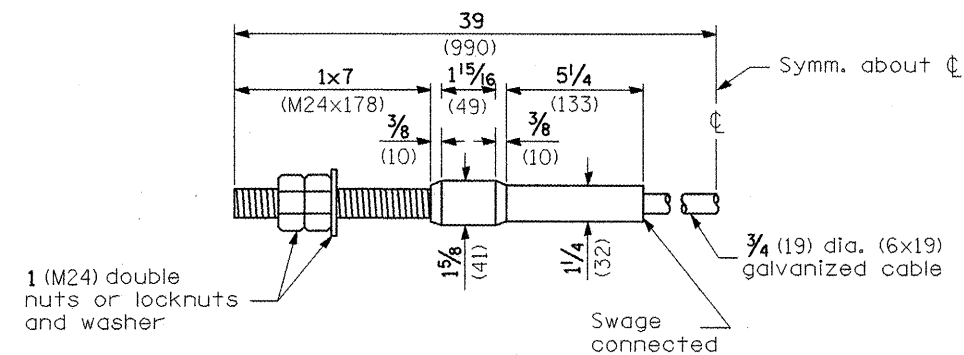
GUARDRAIL PLACED BEHIND CURB

(D = 0 desirable to 12 (300) maximum)



WOOD BLOCK-OUT AND STEEL POST DETAILS

V	W	L	
		Steel Post	Wood Post
0 - 18 (0 - 460)	24 (610)	21 (530)	23 (580)
>18 - 41.5 (>460 - 825)	12 (305)	8 (203)	10 (250)
>41.5 - 53.5 (>825 - 1.13 m)	12 - 0 (305 - 0)	8 (203)	10 (250)



CABLE ASSEMBLY

(18,100 kg (40,000 lbs.) min. breaking strength)
Tighten to taut tension.

All dimensions are in inches (millimeters) unless otherwise noted.

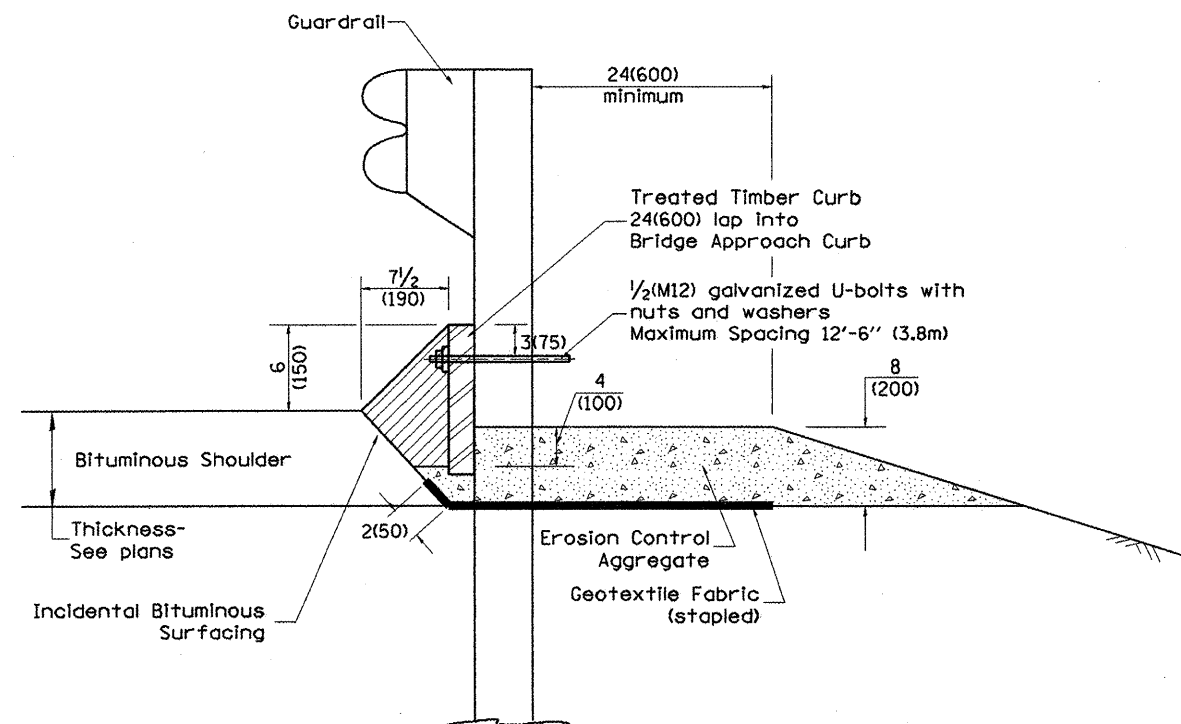
ILLINOIS DEPARTMENT OF TRANSPORTATION
DISTRICT CADD STANDARD

REMOVE AND REERECT
STEEL PLATE BEAM GUARDRAIL

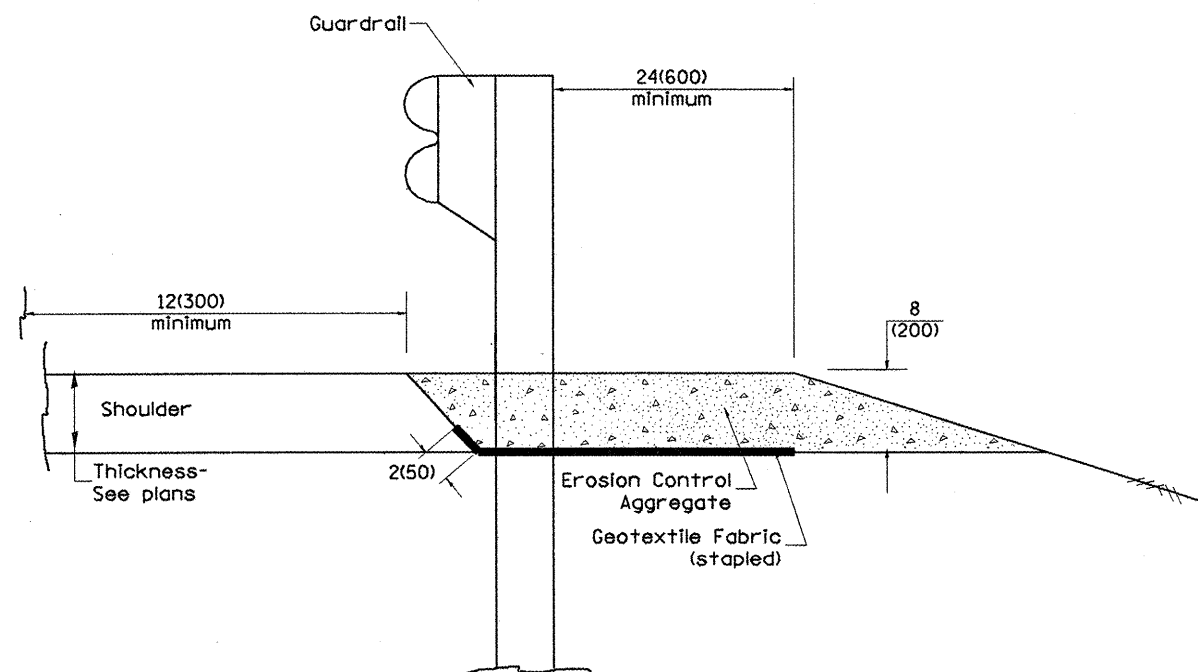
CADD STD. 630011-D4(4) SHEET 4 OF 4
SCALE: NOT DRAWN TO SCALE DRAWN BY: CADD
DATE: **DATE** CHECKED BY:

F.A. RTE.	SECTION	COUNTY	TOTAL SHEETS	SHEET NO.
653	105I-1	PUTNAM	24	20
STA.		TO STA.		
FED. ROAD DIST. NO.	ILLINOIS	FED. AID PROJECT		

DESIGNER NOTE: CURB at guardrail installations where grades are equal to or greater than 1% and at inlets. (Include District Special Provision)
 1. Use EROSION CONTROL CURB at guardrail installations where grades are equal to or greater than 1% (Include District Special Provision)
 2. Use GUARDRAIL AGGREGATE EROSION CONTROL at guardrail installations where grades are less than 1% (Include District Special Provision)
 3. Include State Standards 609001, 609006 or 610001 if applicable.
 4. Include the following District Cadd Standards as needed: Slope Drains for Exposed Pipes; Slope Drains for Buried Pipes; Seepage Collars for Buried Pipes; Seepage Collars for Exposed Pipes; Concrete Thrust Blocks and Pipe Elbow.
 5. Include District Special Provision "Aggregate Quality" for projects located in the Western Area of the District - approx. dividing line is IL 97.



TYPICAL SECTION WITH EROSION CONTROL CURB



TYPICAL SECTION WITHOUT EROSION CONTROL CURB

GENERAL NOTES: EROSION CONTROL CURB

1. This work shall consist of grading as needed, installing hardware and treated timber boards, furnishing and placing mastic material and incidental bituminous surfacing in front of Steel Plate Beam Guardrail in accordance with Plan Details.
2. Timber shall be treated in accordance with Article 1007.12. All preservatives specified in the article will be allowed. Waterborne preservatives "asa" and "cca" shall have a minimum retention of 0.40 lbs./cu. ft. (6.4 kg/m³)

GENERAL NOTES: GUARDRAIL AGGREGATE EROSION CONTROL

1. This work shall consist of grading as needed, furnishing and installing geotextile fabric and staples, and furnishing, placing and shaping crushed aggregate around and behind Steel Plate Beam Guardrail posts in accordance with Plan Details.
2. Before placing the aggregate and the Geotextile Fabric, weeds and grass shall be removed from the area to be covered.
3. After the area has been prepared, and in a dry condition, the Geotextile fabric shall be placed with a 12(300) minimum overlap. A knife cut for guardrail post installation is necessary.
4. The aggregate shall be deposited, compacted and shaped by either mechanical or hand methods, in a manner reasonably true to line and grade.
5. The Contractor shall have the option of placing the guardrail before or after the Geotextile Fabric and Aggregate are in place. If the guardrail is placed after the Geotextile Fabric and Aggregate, then any voids must be filled and the aggregate returned to line and grade.
6. Materials shall meet the following requirements:
 - A. The crushed aggregate shall be CA1 gradation in accordance with Article 1004.01(c) of the Standard Specifications.
 - B. The Geotextile Fabric shall be nonwoven fabric in accordance with Article 1080.02 of the Standard Specifications.

All dimensions are in inches (millimeters) unless otherwise noted.

ILLINOIS DEPARTMENT OF TRANSPORTATION
DISTRICT CADD STANDARD

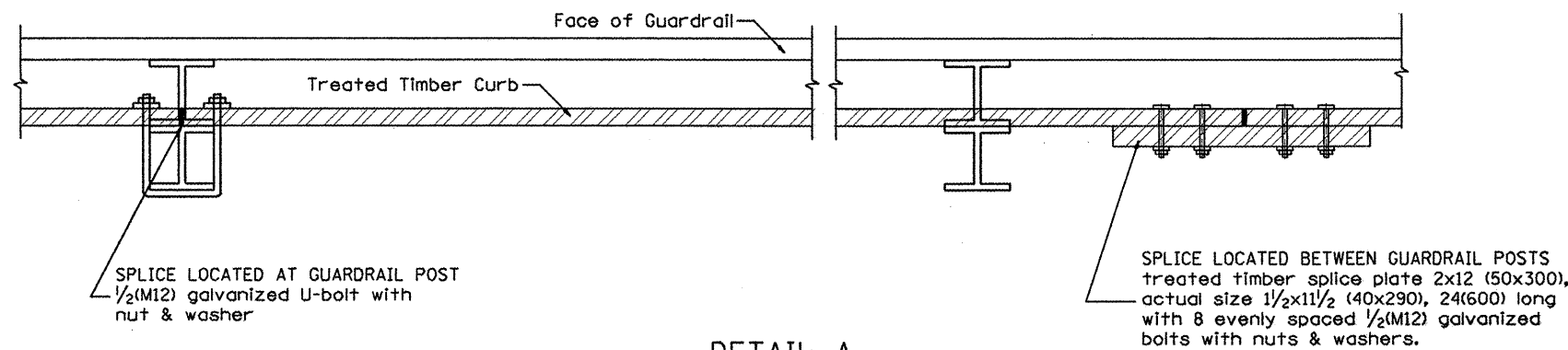
DATE	REVISIONS	BY
1-1-97	RENUM. C-22.01, NEW REVISION BOX	T.P.
3-1-97	CORRECT STD. NUMBERS IN NOTES PG. 2	J.A.
11-3-00	CORRECTION TO NOTES	M.A.
10-16-06	REVISED TO 2007 SPEC.	M.A.

GUARDRAIL EROSION CONTROL TREATMENTS

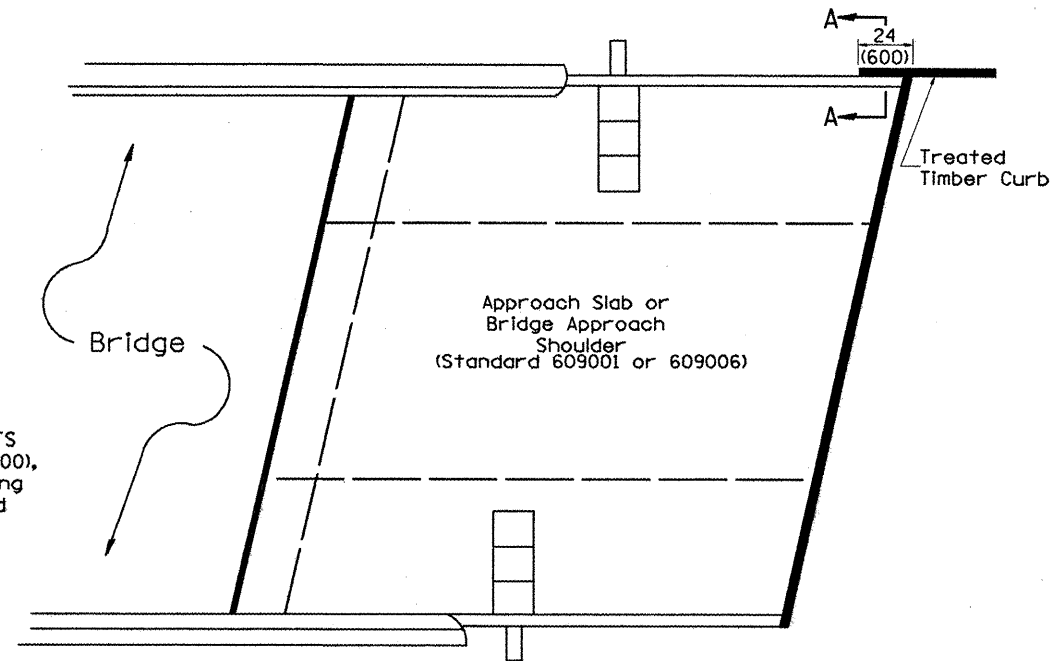
CADD STD NO. 630101-D4(1)
SCALE: NOT DRAWN TO SCALE

SHEET 1 OF 2
DRAWN BY CADD
CHECKED BY

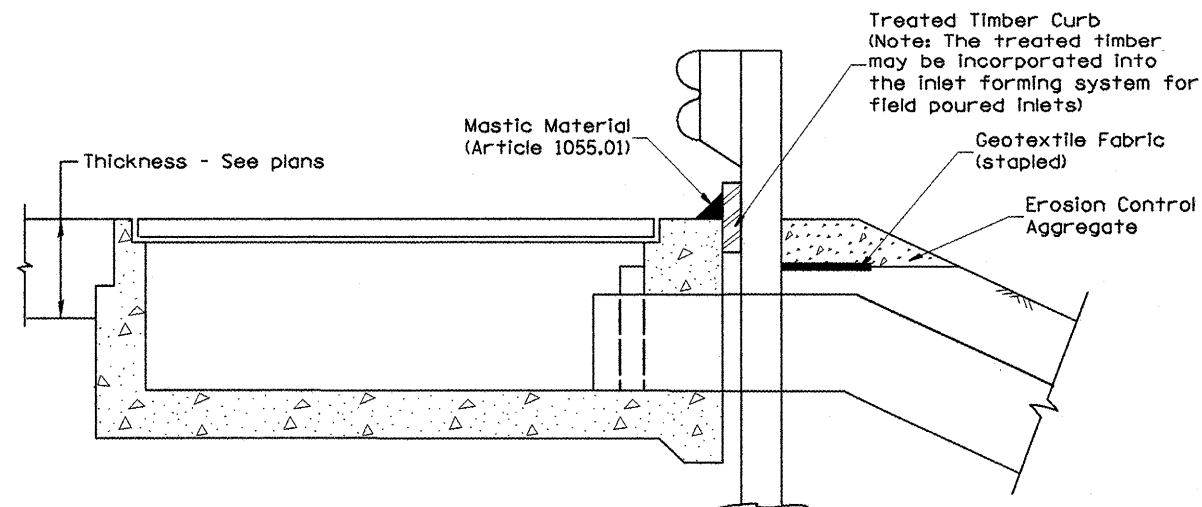
F.A. RTE.	SECTION	COUNTY	TOTAL SHEETS	SHEET NO.
653	1051-1	PUTNAM	24	21
STA.		TO STA.		
FED. ROAD DIST. NO.	ILLINOIS FED. AID PROJECT			



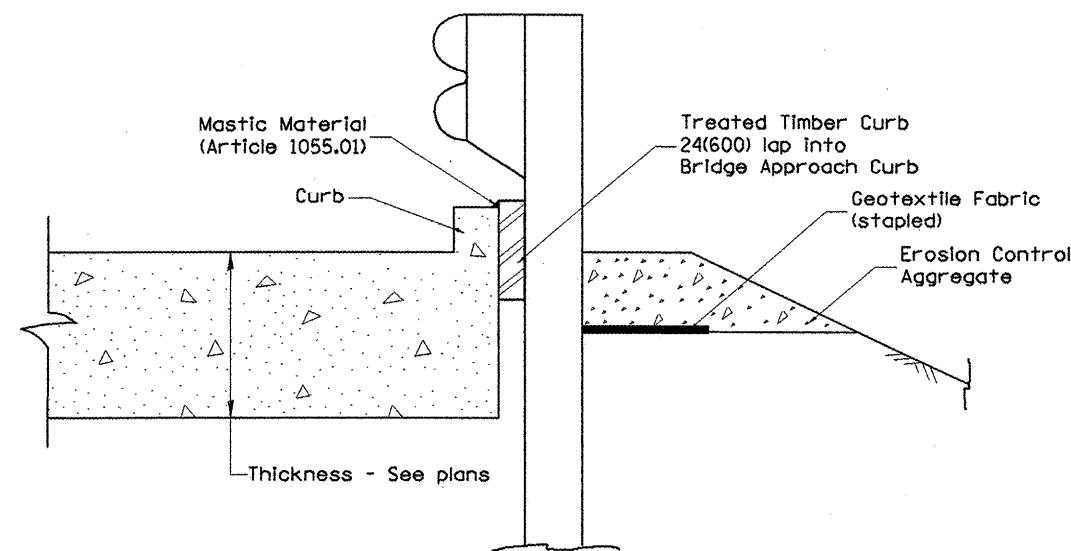
DETAIL A
(Typical Treated Timber Splices)



PLAN VIEW
APPROACH SLAB OR BRIDGE APPROACH SHOULDER
(STANDARD 609001 or 609006)



TYPICAL SECTION WITH EROSION CONTROL CURB
AT INLETS TYPE E & F (STANDARD 610001)

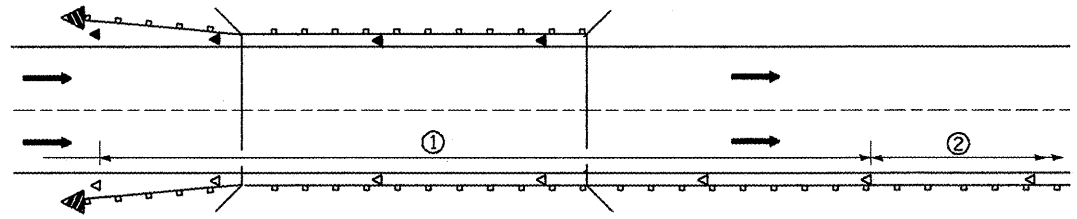


SECTION A-A
TYPICAL SECTION WITH EROSION CONTROL CURB
AT BRIDGE APPROACH CURB
(STANDARD 609001 OR 609006)

All dimensions are in inches (millimeters) unless otherwise noted.

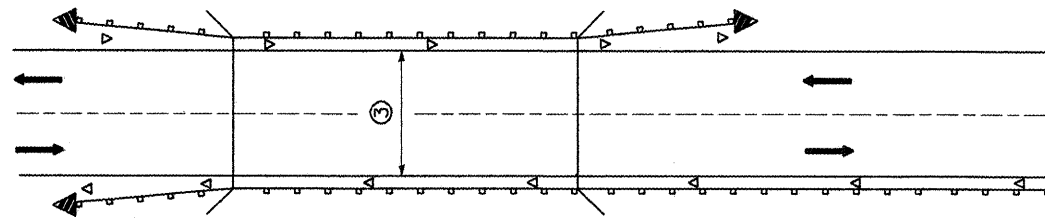
ILLINOIS DEPARTMENT OF TRANSPORTATION	
DISTRICT CADD STANDARD	
GUARDRAIL EROSION CONTROL TREATMENTS	
CADD STD NO. 630101-D4(2)	SHEET 2 OF 2
SCALE: NOT DRAWN TO SCALE	DRAWN BY CADD
	CHECKED BY

F.A. RTE.	SECTION	COUNTY	TOTAL SHEETS	SHEET NO.
653	1051-1	PUTNAM	24	22
STA.	TO STA.			
FED. ROAD DIST. NO.	ILLINOIS FED. AID PROJECT			



- ① Spacing 80 ft. (24 m) max. for first 400 ft. (122 m) or curve spacing shown in Standard 635001, whichever is less (min. 4 reflectors regardless of length).
- ② After 400 ft. (122 m), transition to normal delineator spacing shown in Standard 635001, and continue as required.

ONE-WAY TRAFFIC



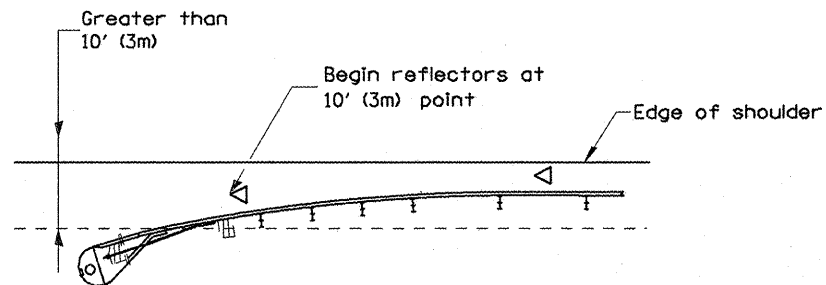
- ③ Bidirectional silver/silver should be used in lieu of monodirectional silver on both sides of two-lane bridges where the bridge pavement is less than 24 (610) wider than the pavement approaching the bridge.

TWO-WAY TRAFFIC

GUARDRAIL / BARRIER WALL / BRIDGE RAIL REFLECTORS

LEGEND

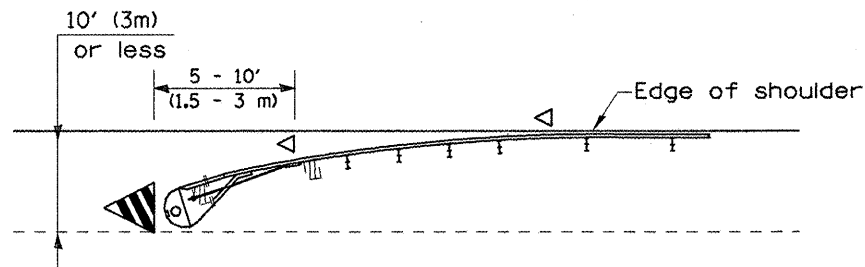
- ◁ Monodirectional silver
- ◄ Monodirectional amber
- ▴ Terminal Marker - Black/Yellow
Left or Right as appropriate



NOTE: Omit terminal marker when terminal over 10' (3m) from edge of paved shoulder or break point of unpaved shoulder, or when terminal buried in backslope.

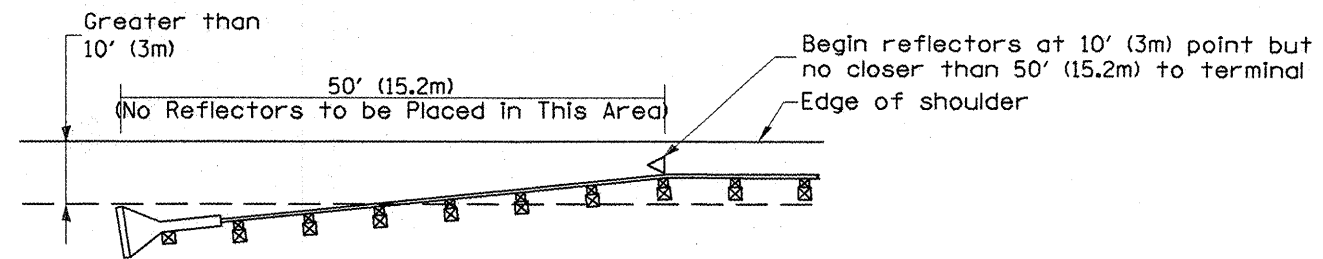
Traffic Barrier Terminal Type(*) and/or Turned-Down Terminal

[Terminal over 10' (3m) from edge of shoulder]
*See Plans for Type



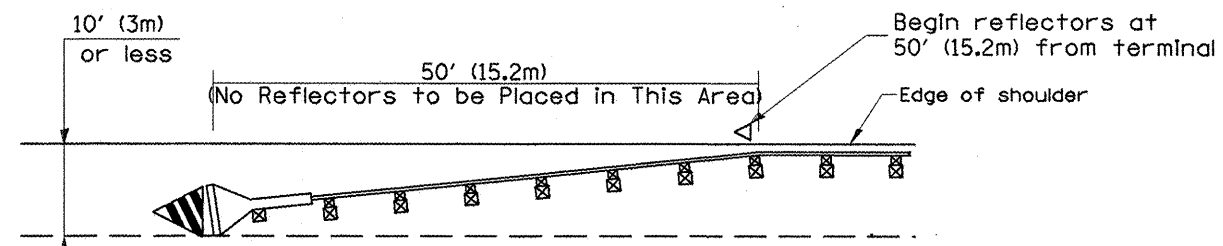
Traffic Barrier Terminal Type(*) and/or Turned-Down Terminal

[Terminal over 10' (3m) or less from edge of shoulder]
*See Plans for Type



NOTE: Omit terminal marker when terminal over 10' from edge of paved shoulder or break point of unpaved shoulder.

Traffic Barrier Terminal Type 1 (Special)
[Terminal over 10' (3m) from edge of shoulder]



Traffic Barrier Terminal Type 1(Special)
[Terminal 10' (3m) or less from edge of shoulder]

All dimensions are in inches (millimeters) unless otherwise noted.

ILLINOIS DEPARTMENT OF TRANSPORTATION	
DISTRICT CADD STANDARD	
GUARDRAIL AND BARRIER WALL DELINEATION	
CADD STD. NO. 635101-D4	SHEET 1 OF 3
SCALE: NOT DRAWN TO SCALE	DRAWN BY CADD
	CHECKED BY

DATE	REVISIONS	BY
1-1-97	RENUM. E-10.02, NEW REVISION BOX	T.P.
3-1-97	CORRECT STD. SPEC. *	J.A.
10-16-06	REVISED TO 2007 SPEC.	M.A.

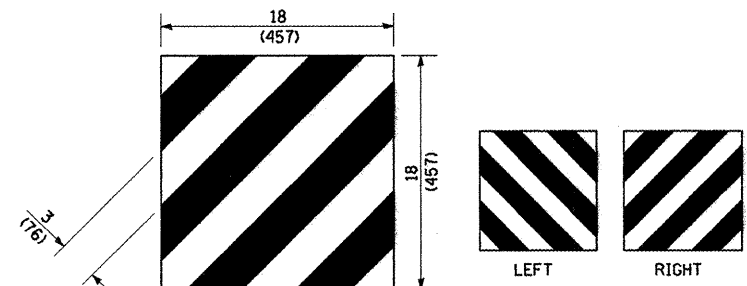
TERMINAL MARKER PLACEMENT

DESIGNER NOTE: 1. INCLUDE APPROPRIATE SPECIAL PROVISIONS FOR "GUARD RAIL DELINEATION POLICY," "GUARDRAIL AND BARRIER WALL DELINEATION," "GUARDRAIL AND BARRIER WALL DELINEATION," "TERMINAL MARKER," "GUARDRAIL AND BARRIER WALL DELINEATION," "TERMINAL MARK POST, AND 3. GUARDRAIL AND BARRIER WALL MARKERS." 2. IF POST MOUNT TERMINAL MARKER IS USED, INCLUDE STATE STD. 720001.

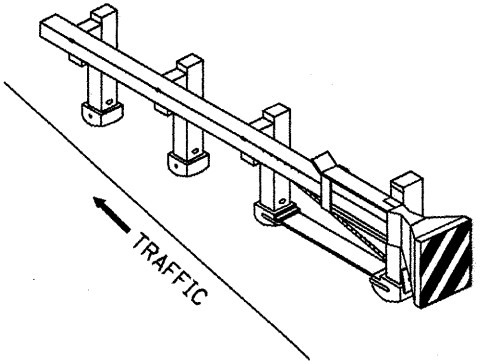
\$\$\$DATE\$\$\$

DCN-ONLY

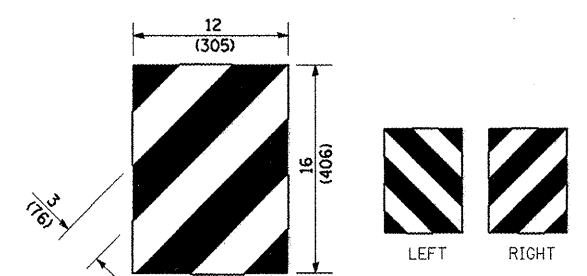
F.A. RTE.	SECTION	COUNTY	TOTAL SHEETS	SHEET NO.
653	1051-1	PUTNAM	24	23
STA.		TO STA.		
FED. ROAD DIST. NO.		ILLINOIS FED. AID PROJECT		



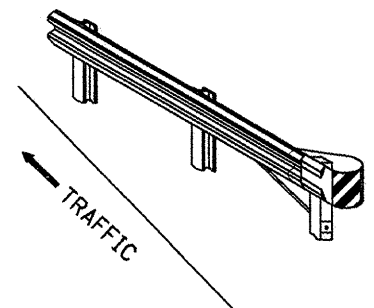
For Traffic Barrier Terminal Type 1 (Special)



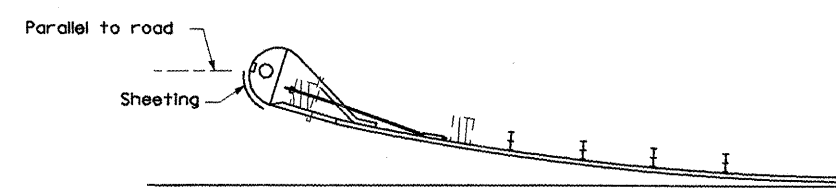
Standard Treatment - Direct Applied Sheeting
Traffic Barrier Terminal Type 1 (Special)



For Traffic Barrier Terminal Type (*)
and Post Mount
* See Plans for Type



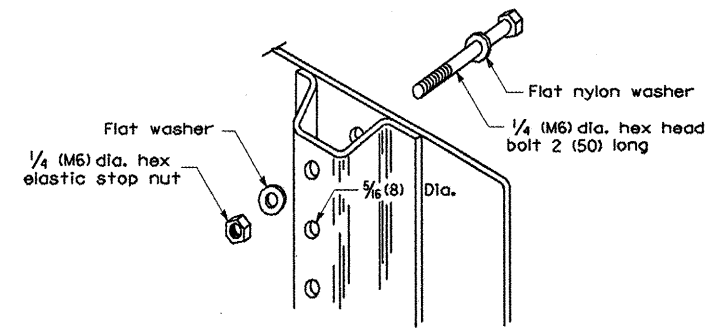
Standard Treatment - Direct Applied Sheeting
Traffic Barrier Terminal Type (*)
* See Plans for Type



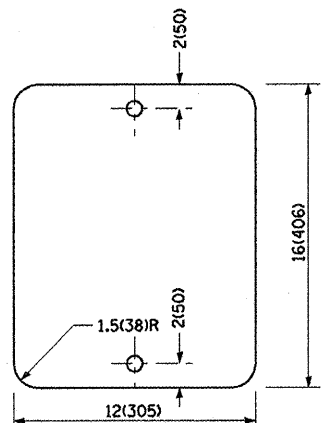
Sheeting Position for
Traffic Barrier Terminal Type (*)
* See Plans for Type

TERMINAL MARKER DETAILS

- Color: Black / Yellow reflectorized
- OM - I100 (L or R) Direct applied reflective sheeting
- OM - I200 (L or R) Post mounted

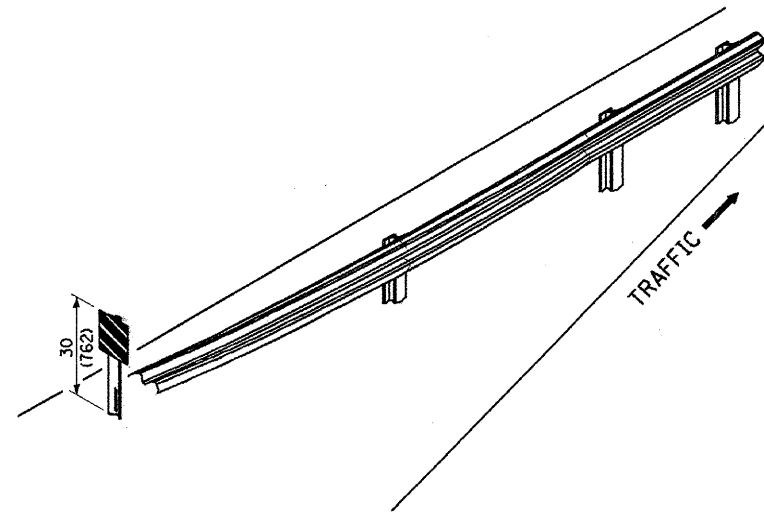


DETAIL OF MOUNTING TERMINAL MARKER TO POST



STANDARD TERMINAL MARKER

POST MOUNTED TERMINAL MARKER ASSEMBLY



ALTERNATE TREATMENT - POST MOUNTED
(For turned-down terminal where sheeting cannot be direct applied)

TERMINAL MARKER TREATMENTS

GENERAL NOTES

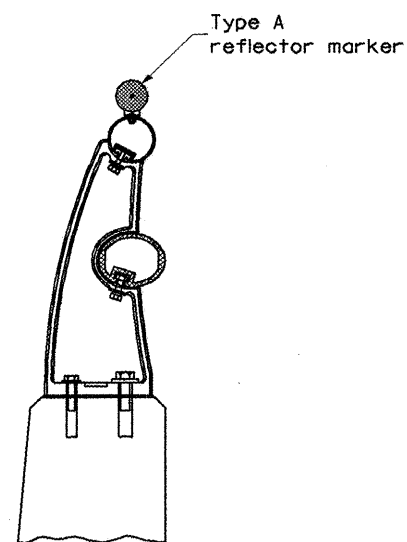
All dimensions are in inches (millimeters) unless otherwise noted.

ILLINOIS DEPARTMENT OF TRANSPORTATION	
DISTRICT CADD STANDARD	
GUARDRAIL AND BARRIER WALL DELINEATION	
CADD STD. NO. 635101-D4	SHEET 2 OF 3
SCALE: NOT DRAWN TO SCALE	DRAWN BY CADD
	CHECKED BY

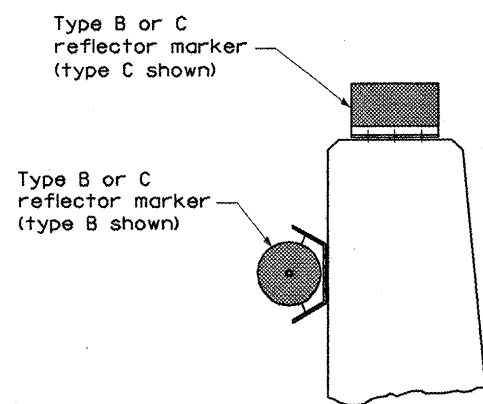
\$\$\$DATE\$\$\$

DGN-ONLY

F.A. RTE.	SECTION	COUNTY	TOTAL SHEETS	SHEET NO.
653	1051-1	PUTNAM	24	24
STA.		TO STA.		
FED. ROAD DIST. NO.		ILLINOIS FED. AID PROJECT		

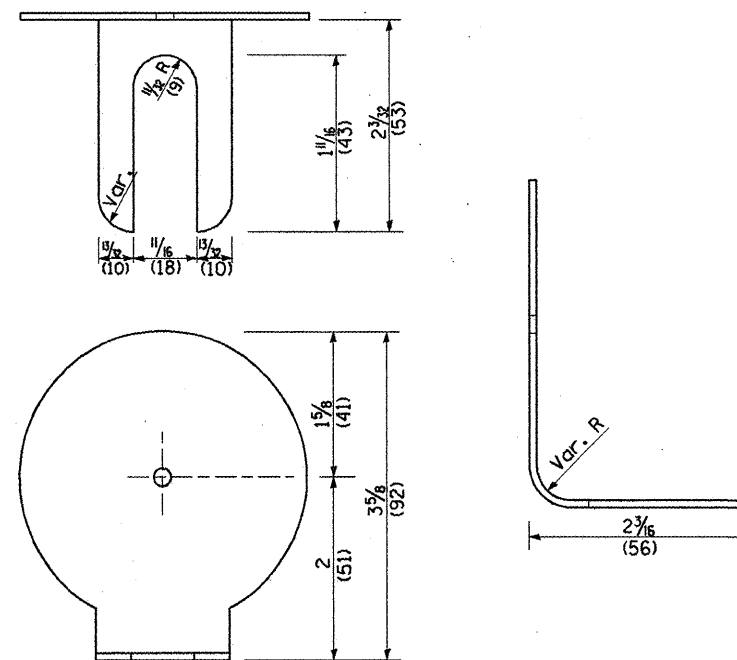


TYPICAL MOUNTING DETAIL FOR BRIDGE RAIL REFLECTOR



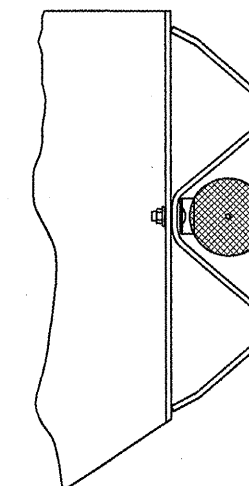
TYPICAL MOUNTING DETAIL FOR BARRIER WALL REFLECTOR

REFLECTOR MOUNTING

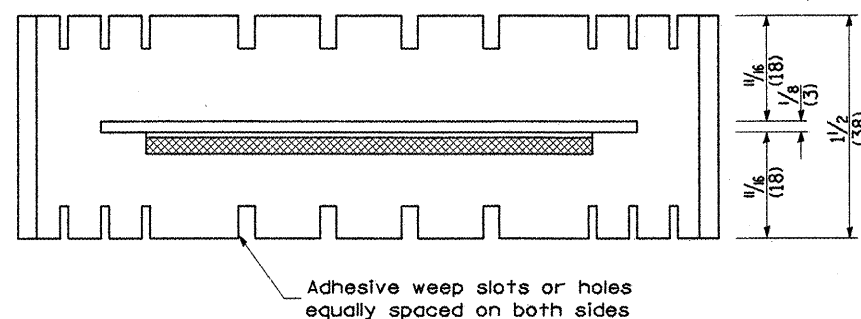


REFLECTOR MARKER TYPE A

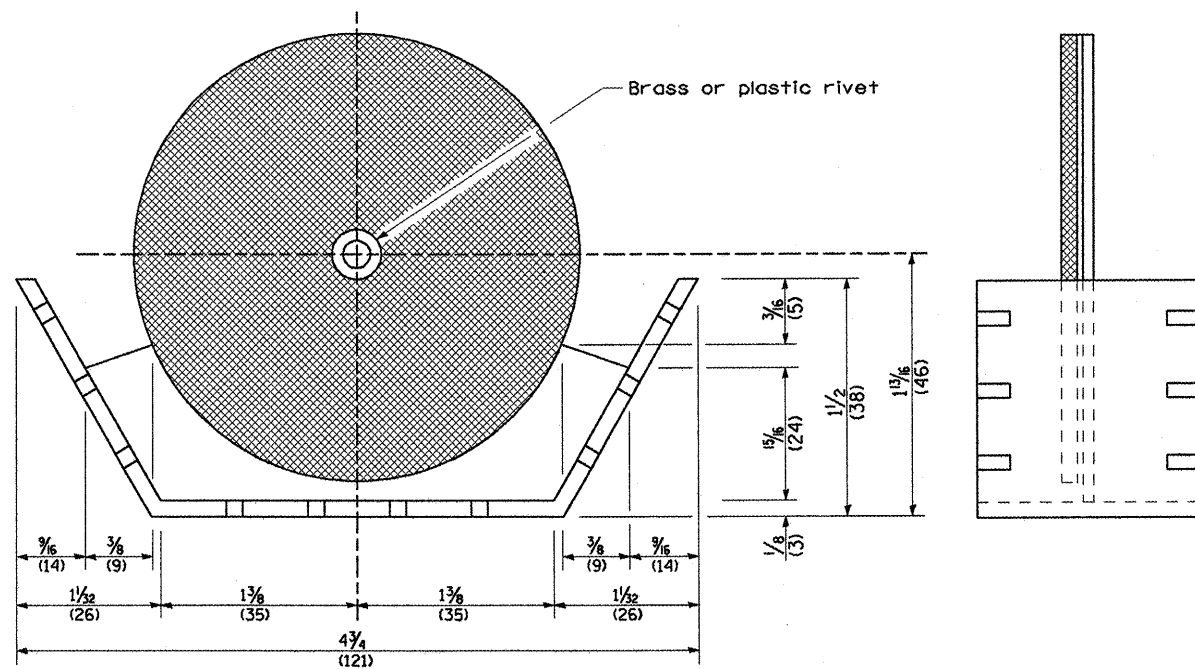
Min. reflective area 6 1/2 sq. in. (4,194 mm²) each side. May be rectangular or slight trapezoid.



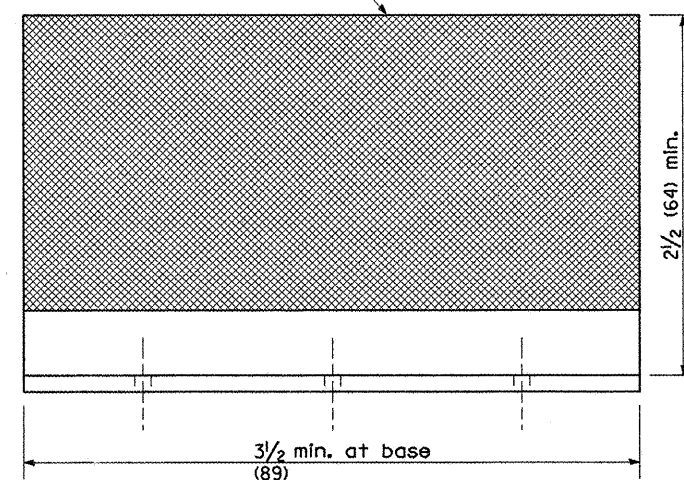
TYPICAL GUARDRAIL MOUNTING WITH REFLECTOR MARKER TYPE A



Adhesive weep slots or holes equally spaced on both sides

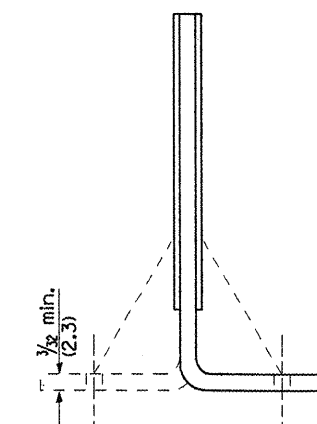


REFLECTOR MARKER TYPE B



REFLECTOR MARKER TYPE C

3 min. adhesive weep holes or slots each side, variable spacing.



Cross section may be "T" or "L" shaped and may have side supports at ends.

REFLECTORS

Minimum total area of base 7.0 Sq. in. (4,516 mm²)

All dimensions are in inches (millimeters) unless otherwise noted.

ILLINOIS DEPARTMENT OF TRANSPORTATION	
DISTRICT CADD STANDARD	
GUARDRAIL AND BARRIER WALL DELINEATION	
CADD STD. NO. 635101-D4	SHEET 3 OF 3
SCALE: NOT DRAWN TO SCALE	DRAWN BY CADD
	CHECKED BY