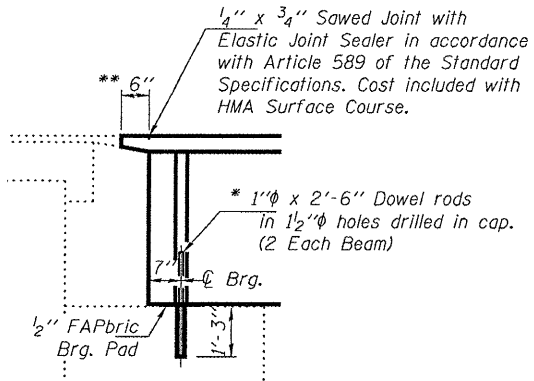


STATE OF ILLINOIS
DEPARTMENT OF TRANSPORTATION

ROUTE NO.	SECTION	COUNTY	TOTAL SHEETS	SHEET NO.
FAP 619	*	PUTNAM	18	13
FED. ROAD DIST. NO. 7	ILLINOIS	FED. AID PROJECT		

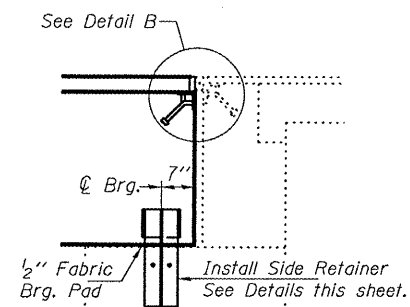
SHEET NO. 5
6 SHEETS

Contract Number: 68783
* (120-BR)1-1 & (11-B)1

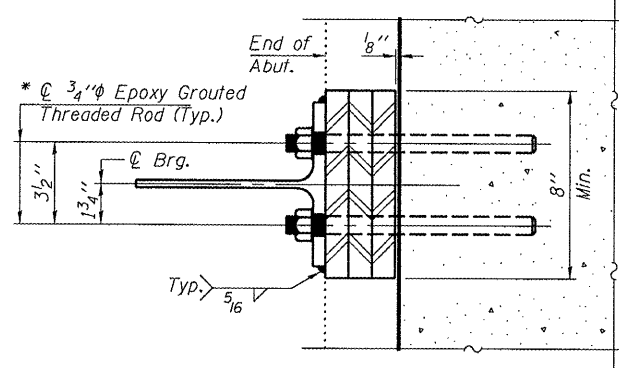


TYPICAL SECTION AT E. ABUTMENT

* Existing dowel rods are to be burned off, ground flush, and sealed with epoxy prior to placement of new beams. Cost included in Removal of Existing PPC Deck Beams. After beams have been erected holes shall be drilled into cap and dowel rods placed. Dowel holes shall be filled with non-shrink grout to top of beam and allowed to cure a minimum of 24 hours prior to grouting the shear keys.

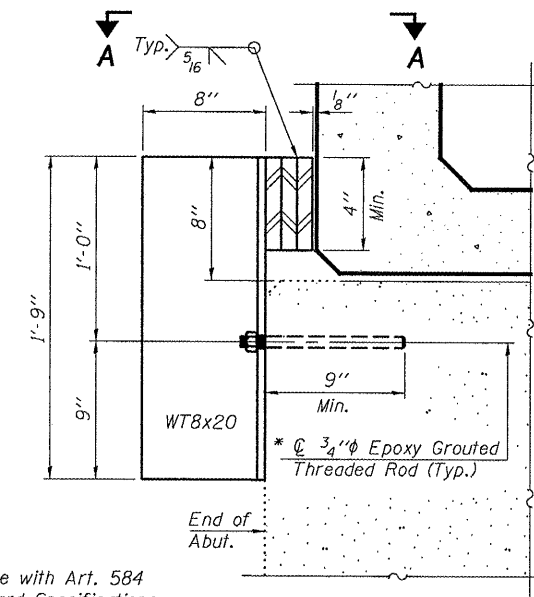


TYPICAL SECTION AT W. ABUTMENT



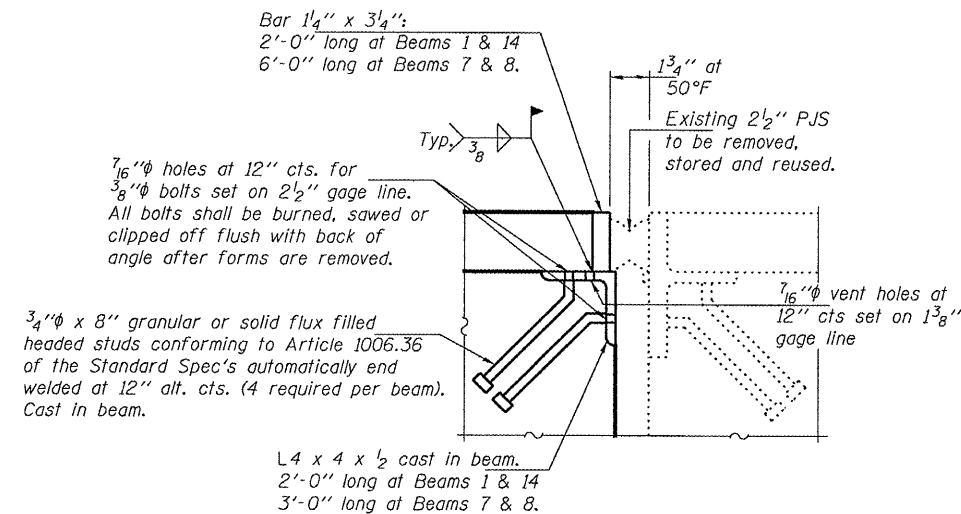
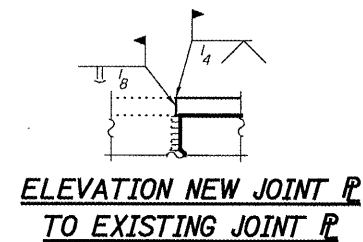
SECTION A-A

* In accordance with Art. 584 of the Standard Specifications.



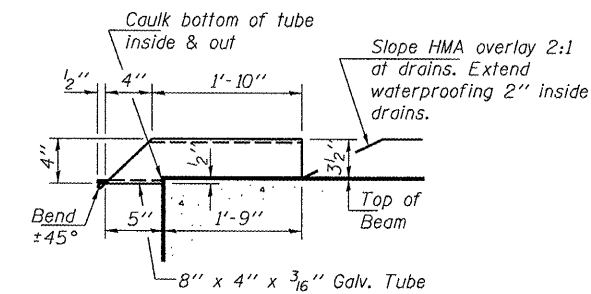
EXPANSION JOINT RETAINER DETAILS

(Cost included with PPC Deck Beams)



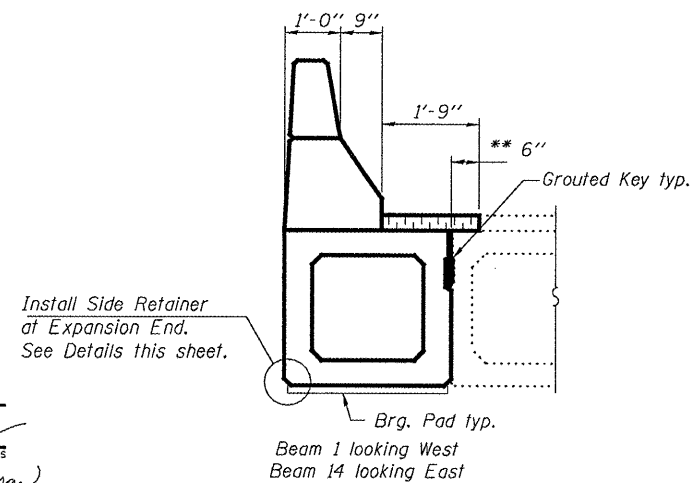
DETAIL B

(Cost included with PPC Deck Beams)

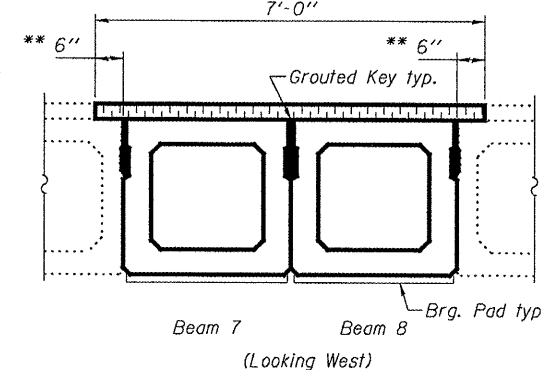


DRAIN DETAIL

Cost included with Concrete Superstructure



PARTIAL CROSS SECTION



PARTIAL CROSS SECTION

** Limits of HMA Surface Removal. Existing waterproofing to remain. Lap new waterproofing 6" over existing.

REPAIR DETAILS
FAP 619 OVER COFFEE CREEK
PUTNAM COUNTY
SN 078-0032

DESIGNED	ATH
CHECKED	AJB
DRAWN	Steffen
CHECKED	ATH AJB

MAY 12, 2008
EXAMINED *Carl Perry*
ENGINEER OF STRUCTURAL SERVICES
PASSED *Ralph E. Anderson*
ENGINEER OF BRIDGES AND STRUCTURES