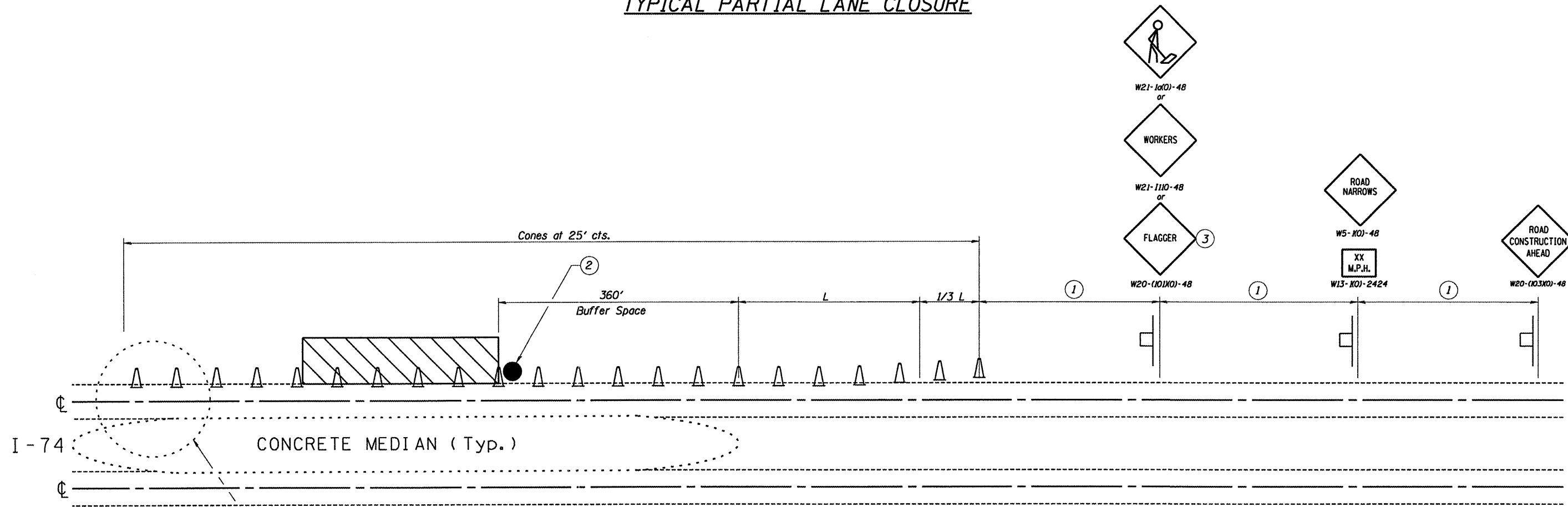
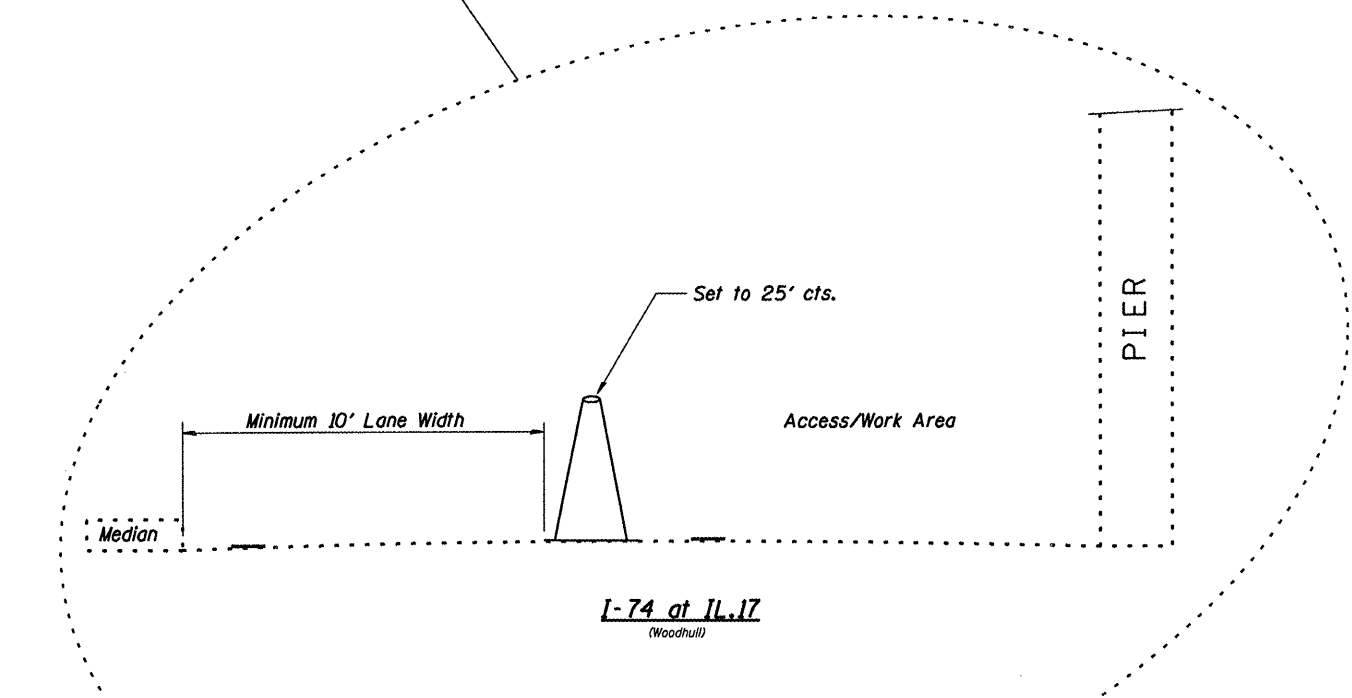


F.A. RTE.	SECTION	COUNTY	TOTAL SHEETS	SHEET NO.
VAR.	VARIOUS	VARIOUS	9	8
STA.	TO STA.			
FED. ROAD DIST. NO. 4 ILLINOIS FED. AID PROJECT				

TYPICAL PARTIAL LANE CLOSURE



I-74 CONCRETE MEDIAN (Typ.)



General Notes:

1. The advisory speed sign shall be 10 mph lower than the posted speed limit.
2. All cones shall be a minimum height of 28".
3. No parking or material storage shall be allowed in the taper or buffer space.
4. Existing posted speed limit signs shall be completely covered during working hours.
5. This Special shall be replaced with Traffic Control Standard 701006 when encroachment is no longer needed.

SIGN SPACING

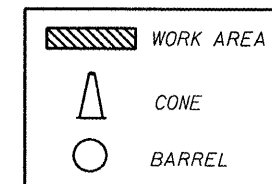
Posted Speed	Sign Spacing
55	500'
50-45	350'
<45	200'

- ① Refer to SIGN SPACING table for distances.
- ② Required for speeds > 40 mph (posted).
- ③ Use flagger sign only when flagger is present.
- = Flagger (used while working in lane encroachment)

$L = (W)(S)$

S = Normal posted speed mph.
W = Width of offset in feet.

LEGEND



PLOT DATE * DATE
PLOT SCALE * SCALE
USER NAME * USER

REVISIONS	DATE

ILLINOIS DEPARTMENT OF TRANSPORTATION

TRAFFIC CONTROL PLAN

SCALE: VERT.
HORIZ.
DATE: 03-28-2008

DRAWN BY: CEJ
CHECKED BY: