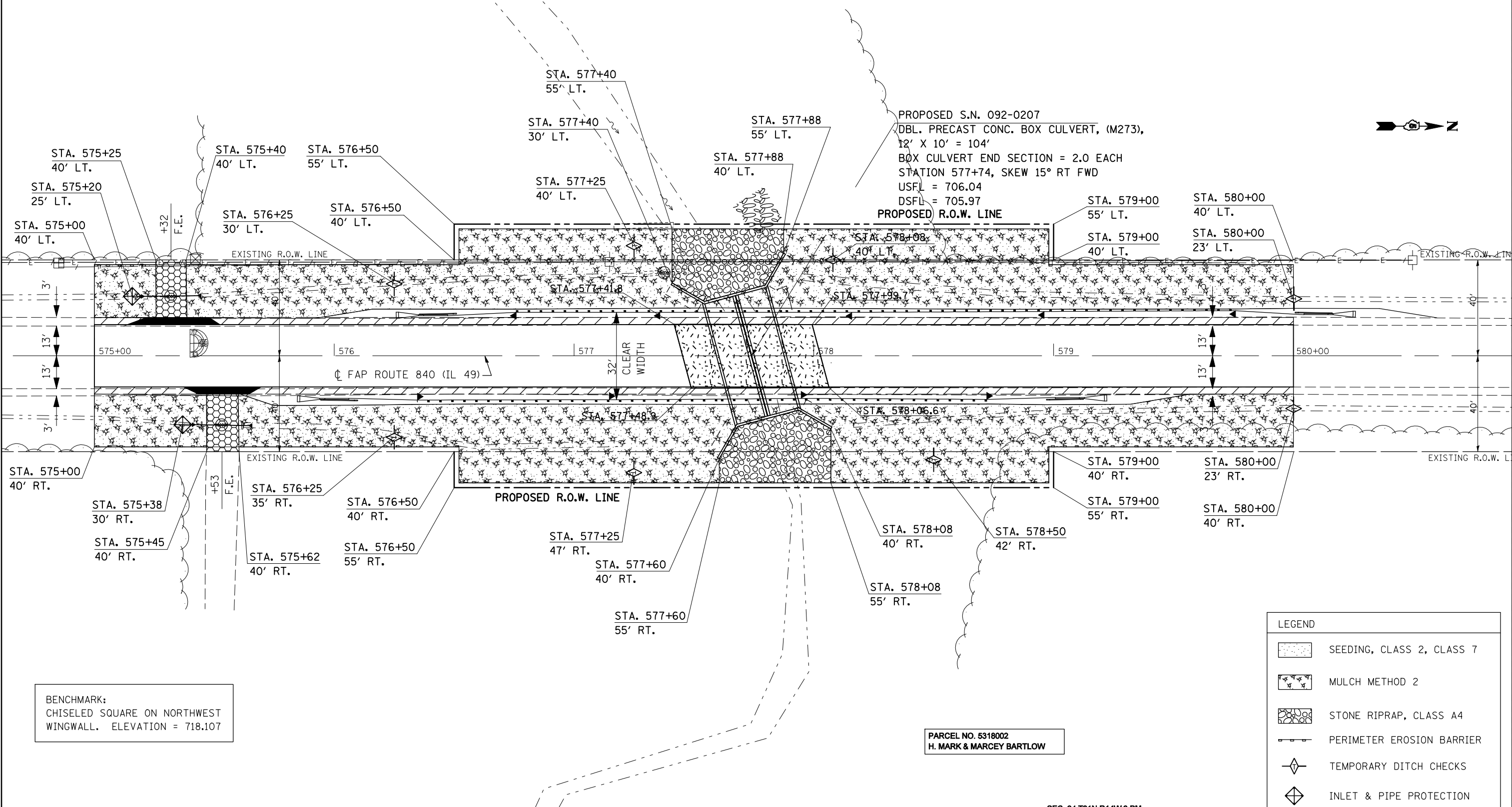


DETAIL NOTE:

IT IS THE INTENT THAT CLASS 7 SEEDING BE PLACED ALONG WITH THE CLASS 2 SEEDING AS SUPPLEMENTAL SEEDING TO AID IN ACCELERATED VEGETATION GROWTH.

EROSION CONTROL DETAIL

PARCEL NO. 5318001  
VERNON & NORINE RADEMACHER



PROPOSED S.N. 092-0207  
DBL. PRECAST CONC. BOX CULVERT, (M273),  
12' X 10' = 104'  
BOX CULVERT END SECTION = 2.0 EACH  
STATION 577+74, SKEW 15° RT FWD  
USFL = 706.04  
DSFL = 705.97



BENCHMARK:  
CHISELED SQUARE ON NORTHWEST  
WINGWALL. ELEVATION = 718.107

PARCEL NO. 5318002  
H. MARK & MARCEY BARTLOW

LEGEND

|  |                           |
|--|---------------------------|
|  | SEEDING, CLASS 2, CLASS 7 |
|  | MULCH METHOD 2            |
|  | STONE RIPRAP, CLASS A4    |
|  | PERIMETER EROSION BARRIER |
|  | TEMPORARY DITCH CHECKS    |
|  | INLET & PIPE PROTECTION   |

|   |                              |            |           |
|---|------------------------------|------------|-----------|
| FILE NAME =                                   | USER NAME = collierbw        | DESIGNED - | REVISED - |
| ct:\projects\4502499 (v8)\2007_dtm\plansh\dgn |                              | DRAWN -    | REVISED - |
|   | PLOT SCALE = 40.0000 ' / IN. | CHECKED -  | REVISED - |
|   | PLOT DATE = 3/19/2008        | DATE -     | REVISED - |

STATE OF ILLINOIS  
DEPARTMENT OF TRANSPORTATION

EROSION CONTROL DETAIL

SCALE: SHEET NO. OF SHEETS STA. 575+00 TO STA. 580+00

|   |         |           |              |           |
|---|---------|-----------|--------------|-----------|
| F.A.P. RTE.                                   | SECTION | COUNTY    | TOTAL SHEETS | SHEET NO. |
| 840   | 121BR-1 | VERMILION | 44           | 13        |
| CONTRACT NO. 70018                            |         |           |              |           |
| FED. ROAD DIST. NO. ILLINOIS FED. AID PROJECT |         |           |              |           |