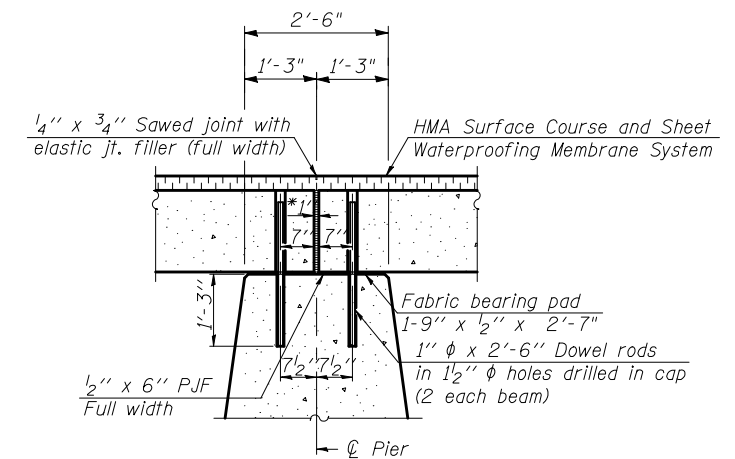
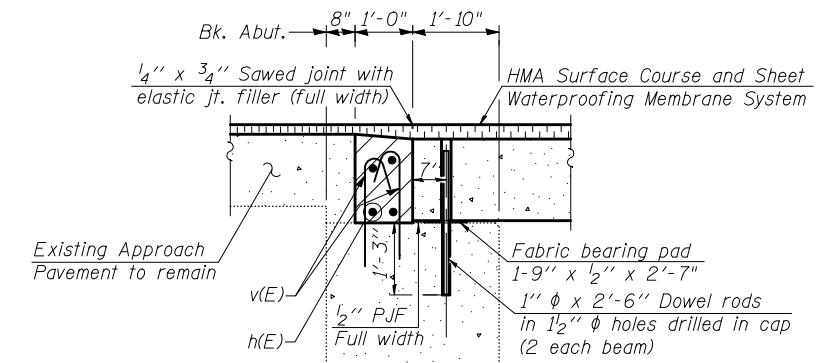
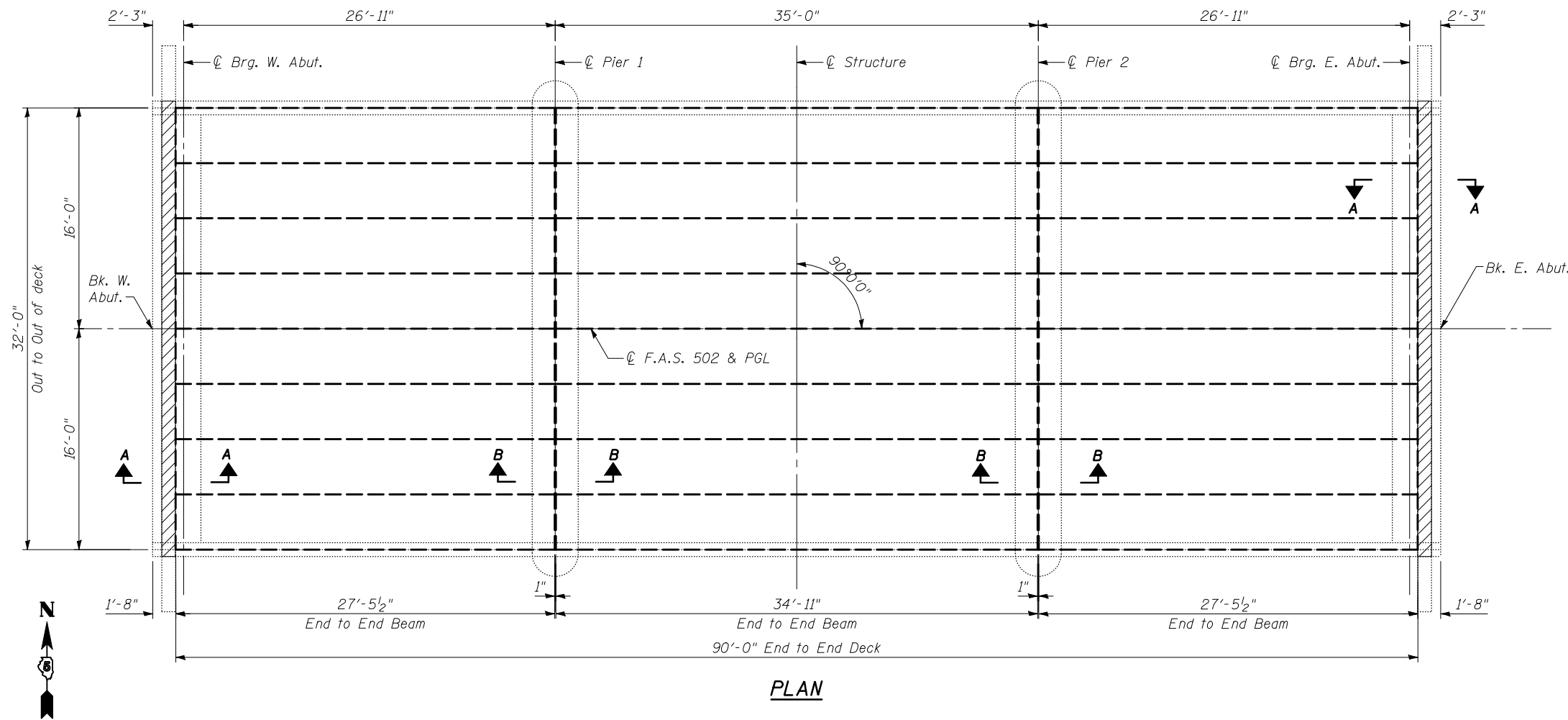


STATE OF ILLINOIS
DEPARTMENT OF TRANSPORTATION

ROUTE NO.	SECTION	COUNTY	TOTAL SHEETS	SHEET NO.	SHEET NO.
F.A.S. 502	(86BR)BR	CHAMPAIGN	30	12	8 SHEETS
FED. ROAD DIST. NO. 7	ILLINOIS	FED. AID PROJECT-			

Contract # 70426



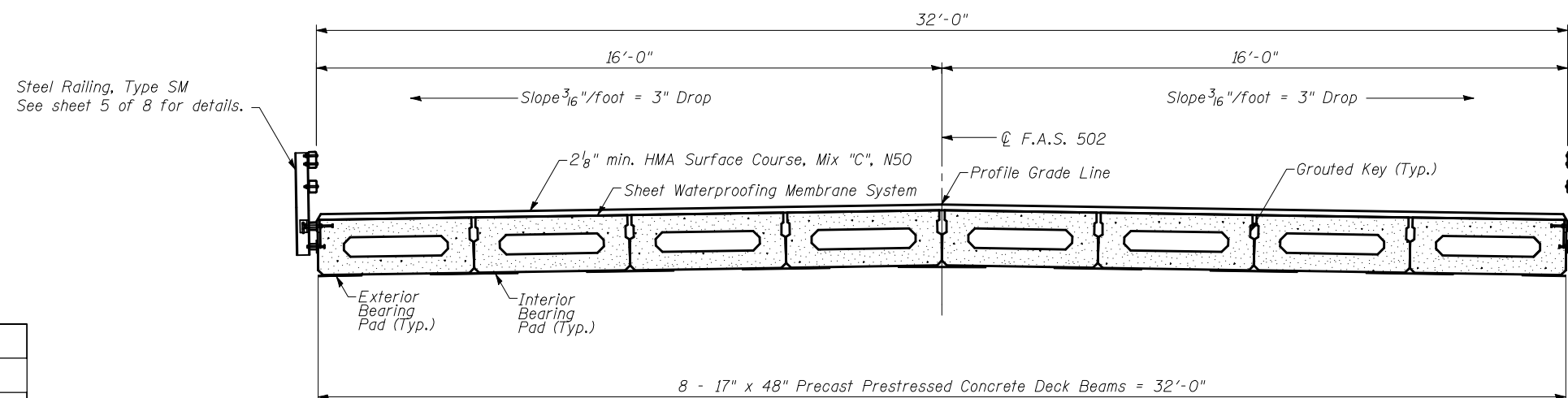
*1" Jt. shall be filled with non-shrink grout. 1" dimension may vary to accommodate tolerance in beam lengths.

NOTES:

After beams have been erected, holes shall be drilled into substructure and anchor dowels placed. Dowel holes shall be filled with non-shrink grout to top of beam and allowed to cure min. 24 hrs. prior to grouting the shear keys.

All horizontal dimensions are at right angles to beam ends. Hatched area to be poured after beams are in place. See sheet 4 of 8 for bearing pad details.

SUPERSTRUCTURE
LEVERETT ROAD OVER THE SALINE BRANCH
CHAMPAIGN COUNTY
F.A.S. ROUTE 502 - SEC. (86BR) BR
STATION 71+38.50
S.N. 010-0237



DESIGNED	FGE
CHECKED	JAR
DRAWN	KAS
CHECKED	AJS

STRAND ASSOCIATES, INC.