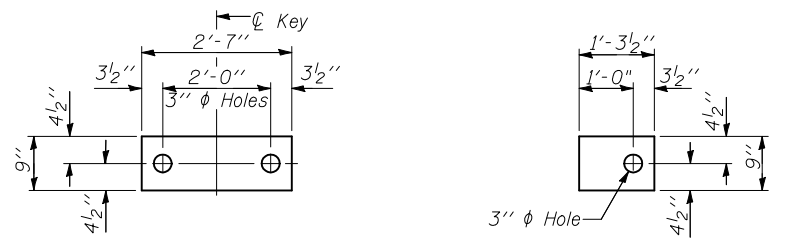


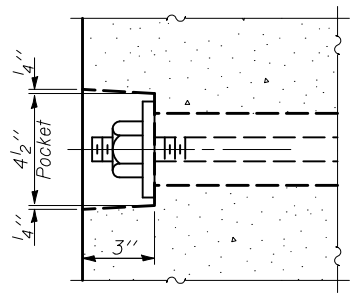
STATE OF ILLINOIS
DEPARTMENT OF TRANSPORTATION

ROUTE NO.	SECTION	COUNTY	TOTAL SHEETS	SHEET NO.	SHEET NO. 4
F.A.S. 502	(86BR)BR	CHAMPAIGN	30	14	8 SHEETS
FED. ROAD DIST. NO. 7	ILLINOIS	FED. AID PROJECT-			

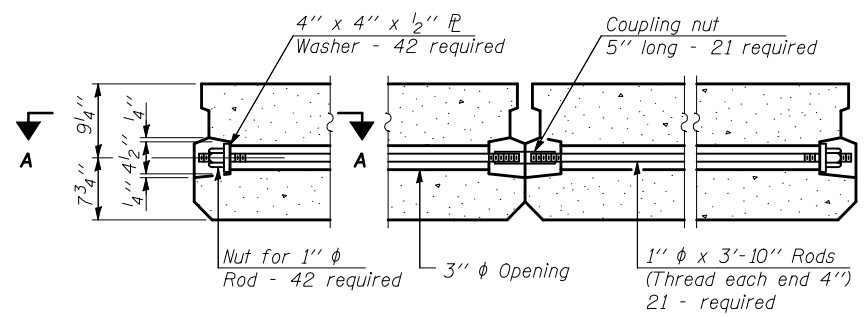
Contract # 70426



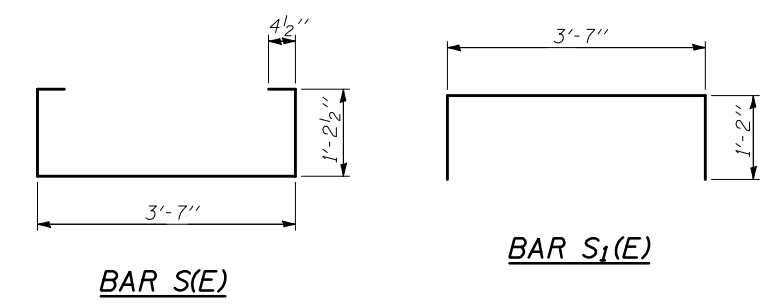
FABRIC BEARING PAD
(Interior) **FIXED**
FABRIC BEARING PAD
(Exterior)



SECTION A-A

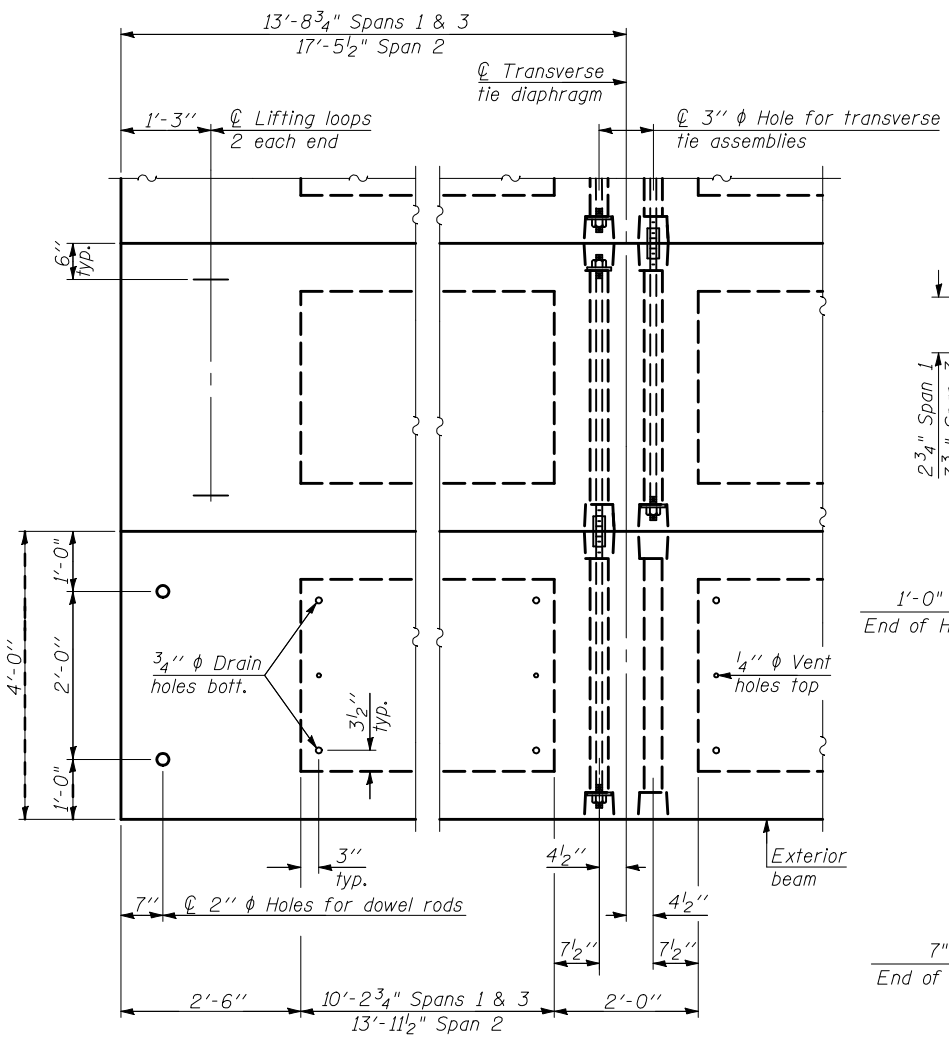


TYPICAL TRANSVERSE TIE ASSEMBLY

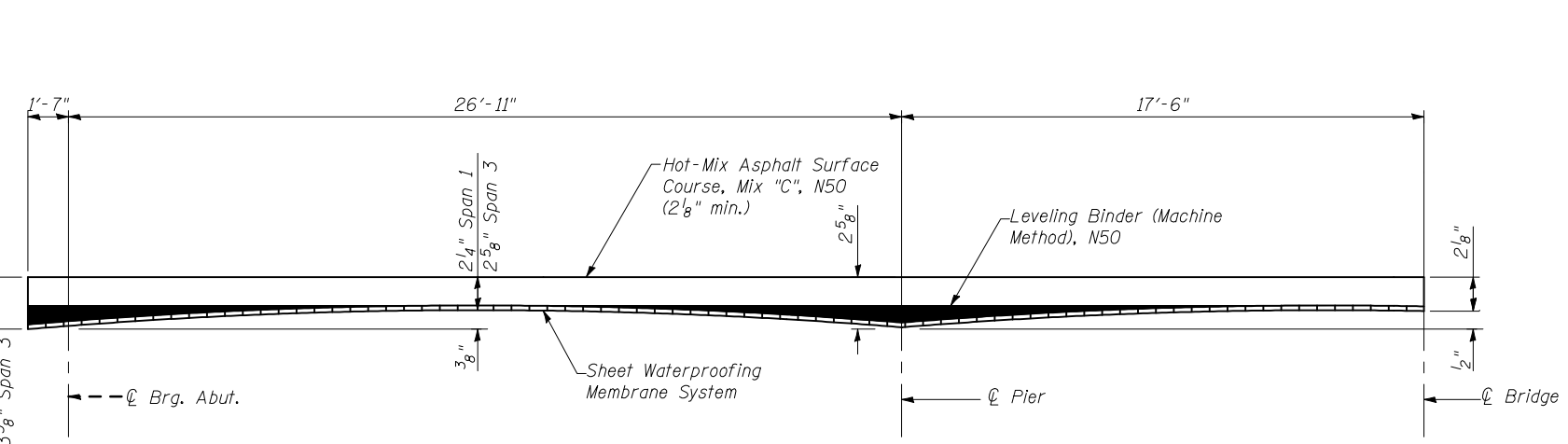


BAR S(E)

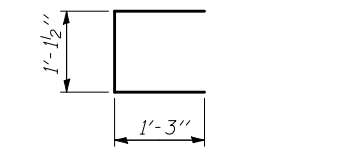
BAR S1(E)



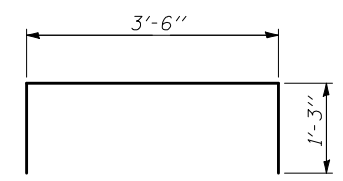
PLAN VIEW



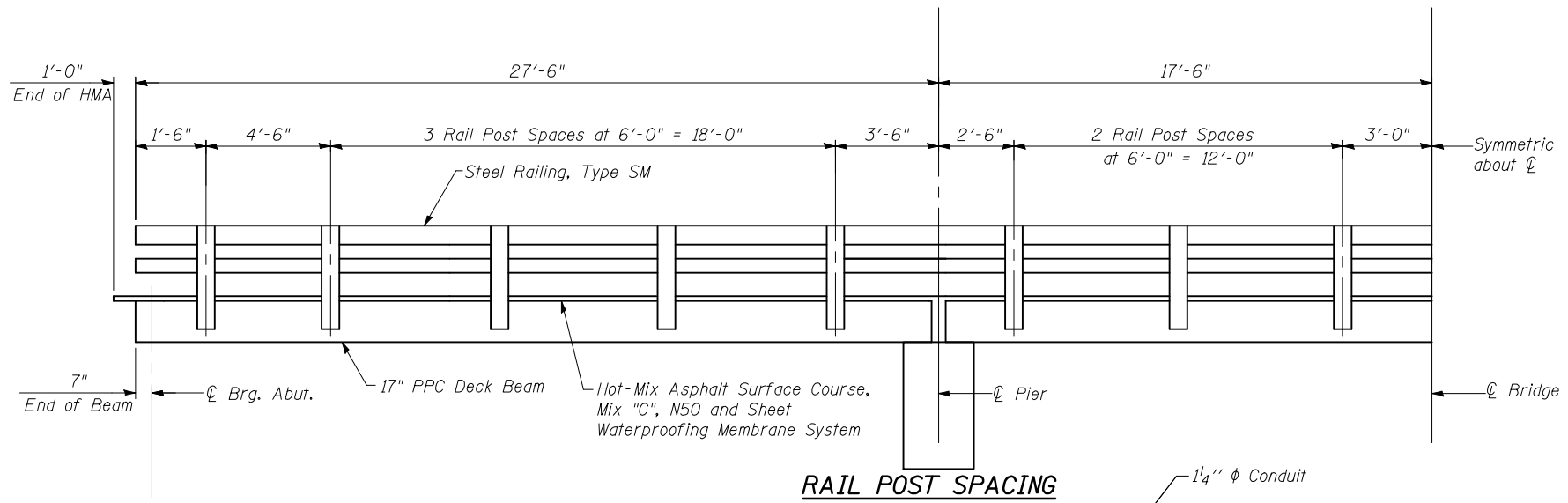
HMA SURFACE COURSE PROFILE



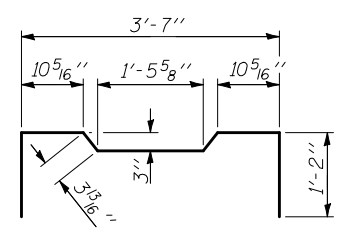
BAR U(E)



BAR U1(E)



RAIL POST SPACING



BAR S2(E)

BILL OF MATERIAL

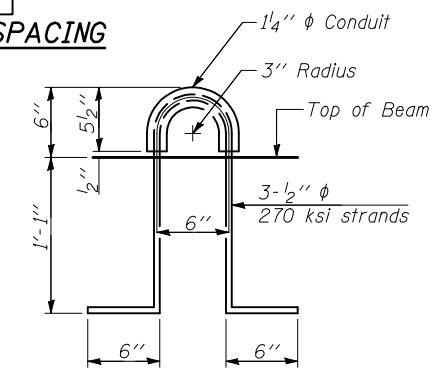
Precast Prestressed Conc. Deck Bms. (17" Depth)	Sq. Ft.	2875
-------------------------------------------------	---------	------

Note: Connect beams in pairs with the transverse tie configuration shown.

NOTES:

- Prestressing steel shall be uncoated high strength, low relaxation 7-wire strand, Grade 270. The nominal diameter shall be 1/2" and the nominal cross-sectional area shall be 0.153 sq. in. The 1" rods in the transverse tie assembly shall be tightened to a snug fit and the threads set. Pockets on exterior faces of bridge shall be filled with grout after transverse tie assembly is in place.
- Reinforcement bars shall conform to ASTM A 706 (IL MOD), Grade 60. (See Special Provisions)
- Two 1/8" fabric adjusting shims of the dimensions of the exterior bearing pad shall be provided for each bearing pad location.
- A minimum 2 1/2" lifting pin shall be used to engage the lifting loops during handling.
- Corrosion Inhibitor, per Article 1020.05(b)(12) and 1021.06 of the Standard Specifications, shall be used in the concrete for precast prestressed concrete deck beams.
- Compressive strength of prestressed concrete, f'c, shall be 6000 psi.
- Compressive strength of prestressed concrete at release, f'ci, shall be 5000 psi.
- The top surface of the beams shall be finished according to the IDOT Manual for Fabrication of Precast Prestressed Concrete Products.

DESIGNED	FGE
CHECKED	JAR
DRAWN	KAS
CHECKED	AJS



LIFTING LOOP DETAIL

SUPERSTRUCTURE DETAILS 2
LEVERETT ROAD OVER THE SALINE BRANCH
CHAMPAIGN COUNTY
F.A.S. ROUTE 502 - SEC. (86BR) BR
STATION 71+38.50
S.N. 010-0237

STRAND ASSOCIATES, INC.