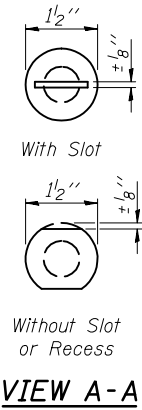
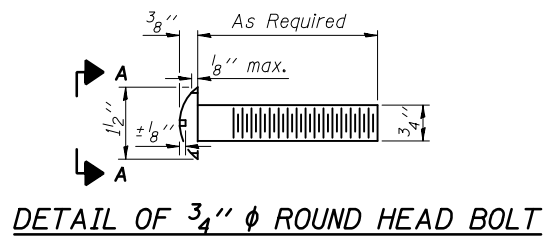


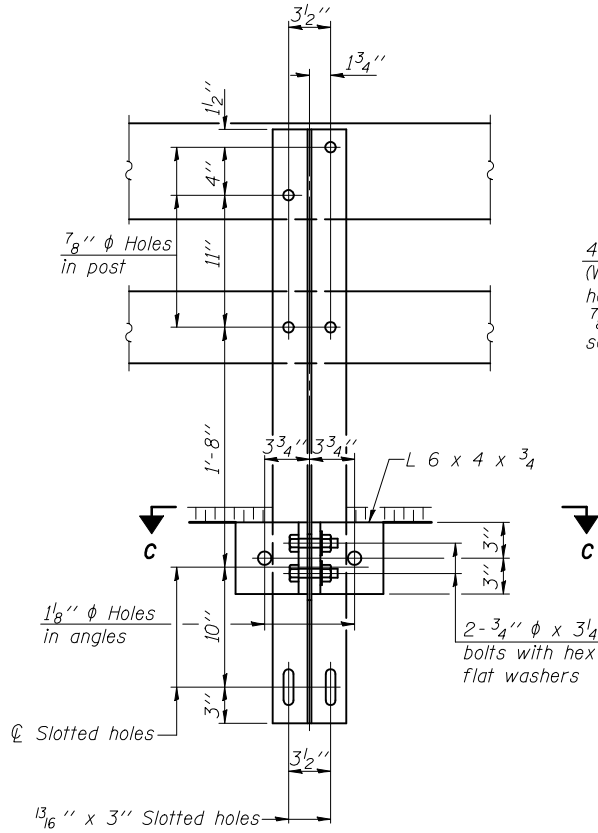
STATE OF ILLINOIS
DEPARTMENT OF TRANSPORTATION

ROUTE NO.	SECTION	COUNTY	TOTAL SHEETS	SHEET NO.	SHEET NO. 5
F.A.S. 502	(86BR)BR	CHAMPAIGN	30	15	8 SHEETS
FED. ROAD DIST. NO. 7	ILLINOIS	FED. AID PROJECT			

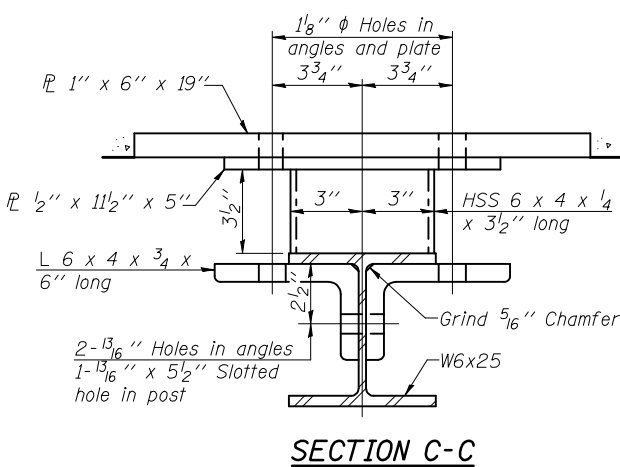
Contract # 70426



4- 3/4" ϕ x 6" Round Head Bolts (With slot or approved recess in head) with locknut & flat washer. 7/8" ϕ holes in hollow structural section may be drilled in the field.



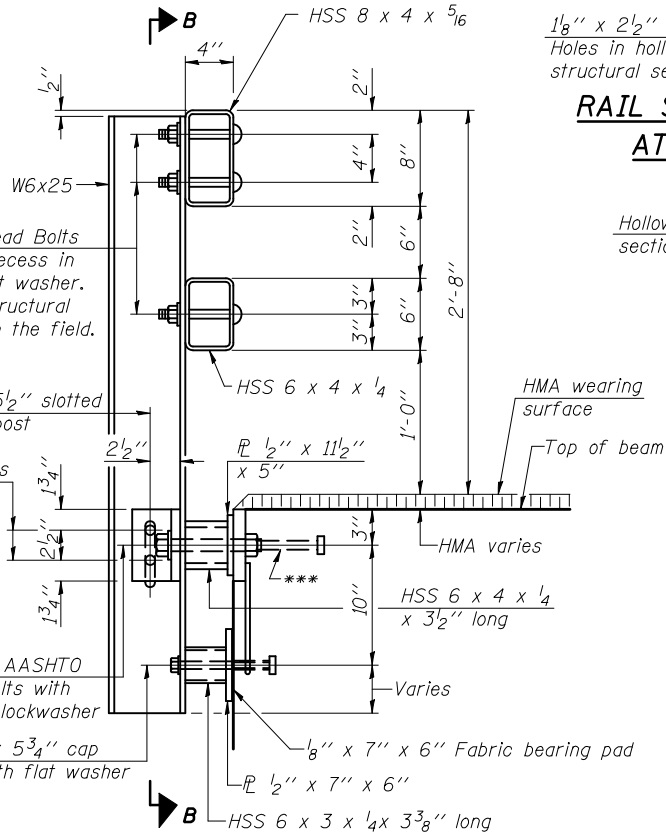
SECTION B-B



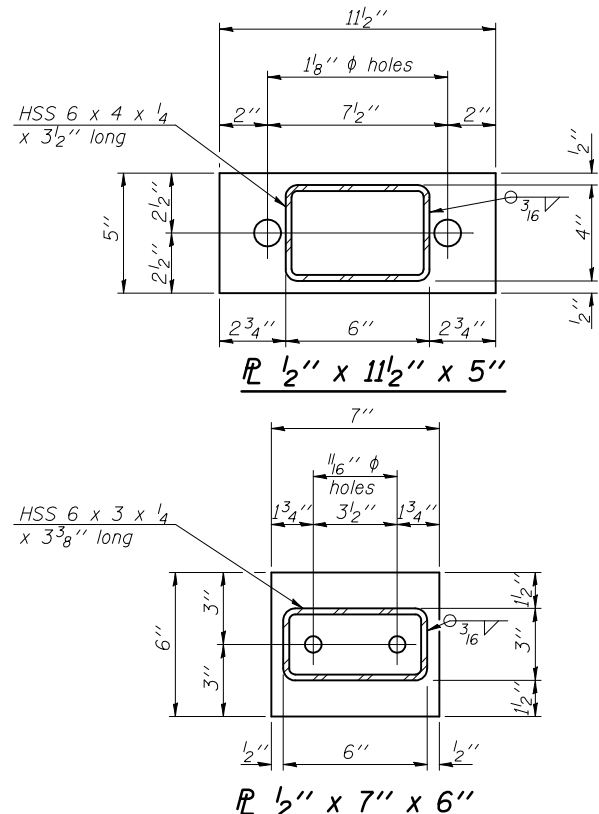
SECTION C-C

DESIGNED	FGE
CHECKED	JAR
DRAWN	KAS
CHECKED	AJS

(6'-3" Maximum Post Spacing) (1/4" minimum to 3/8" maximum HMA thickness)



SECTION AT RAIL POST

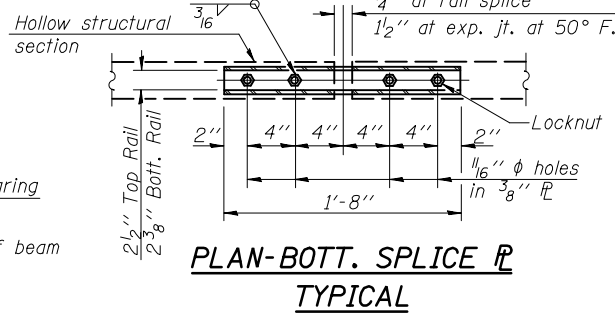


ANCHOR DEVICE

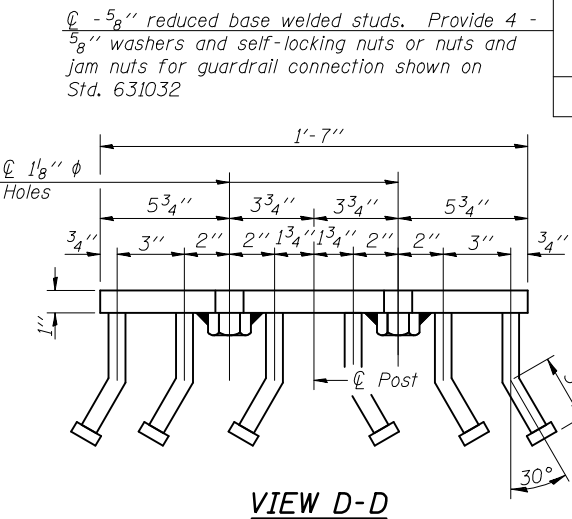
*Threaded areas shall be plugged or blocked off during casting of beam. Galvanized after fabrication.

RAIL SPLICE CONNECTION AT EXPANSION JT.

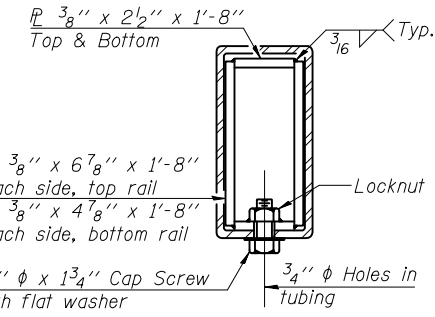
1/8" x 2 1/2" Slotted Holes in hollow structural section



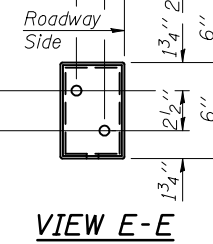
PLAN-BOTT. SPLICE R TYPICAL



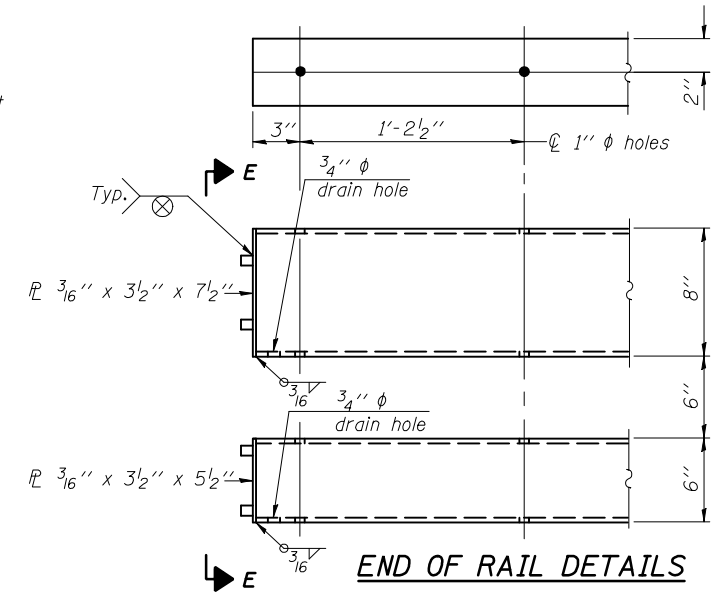
VIEW D-D



SECTION AT RAIL SPLICE



VIEW E-E



END OF RAIL DETAILS

Notes:
All field drilled holes shall be coated with an approved zinc rich paint before erection.
For multi-span bridges, sufficient 1/4" x 6" x 1'-2" galvanized steel shims shall be provided to align rail between adjacent spans. Cost included with Steel Railing, Type SM.
All steel rail members shall be galvanized according to Article 509.05 of the Standard Specifications.
***The studs of the anchor devices shall be placed below the top reinforcement bars and the outermost longitudinal reinforcement bar shall be placed directly above the studs of the rail post anchor device.

BILL OF MATERIAL

Item	Unit	Quantity
Steel Railing, Type SM	Foot	180

STEEL RAILING, TYPE SM WITH HOT-MIX ASPHALT WEARING SURFACE

RAILING DETAILS
LEVERETT ROAD OVER THE SALINE BRANCH
CHAMPAIGN COUNTY
F.A.S. ROUTE 502 - SEC. (86BR) BR
STATION 71+38.50
S.N. 010-0237

STRAND ASSOCIATES, INC.