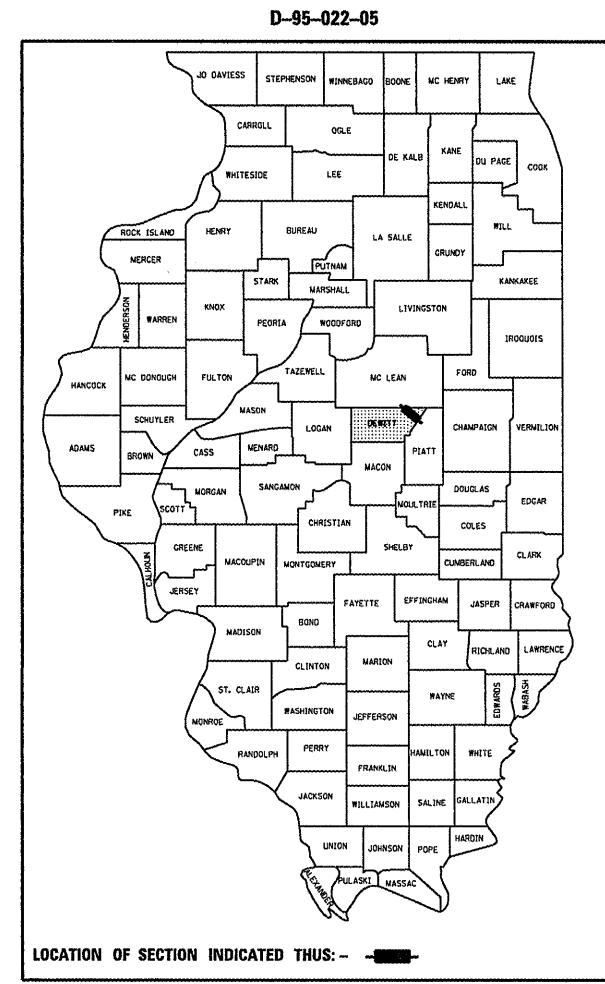


F.A.I. RTE.	SECTION	COUNTY	TOTAL SHEETS	SHEET NO.
74	(20-1)RS-2	DEWITT	97	1

STATE OF ILLINOIS
DEPARTMENT OF TRANSPORTATION
DIVISION OF HIGHWAYS

**PROPOSED
HIGHWAY PLANS**
PROJECT ACIM-074-5 (157)160
F.A.I. ROUTE 74
SECTION (20-1)RS-2
DEWITT COUNTY

FOR INDEX OF SHEETS, SEE SHEET NO. 2
FOR SUMMARY OF QUANTITIES, SEE SHEET NO. 5 - 7

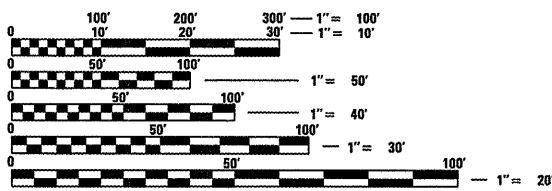


PROJECT ENGINEER: KEVIN TRAPP
SQUAD LEADER: JEFF M. SHERER
DESIGNER: RANDY AUSTIN

CURRENT TRAFFIC DATA

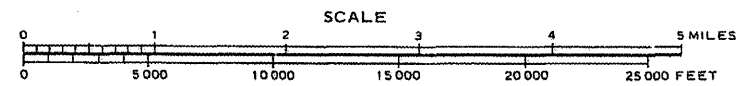
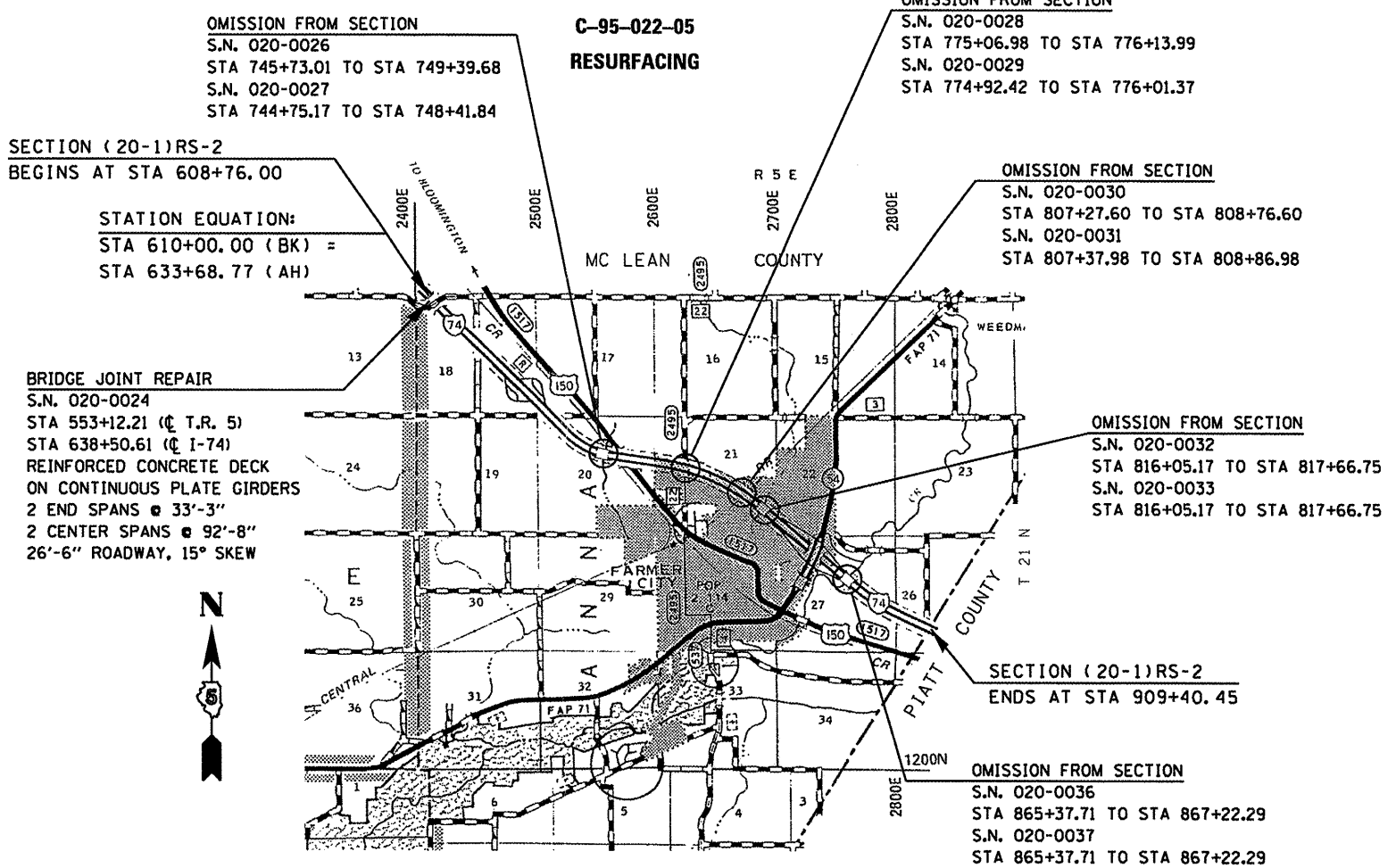
CURRENT ADT	=	23,000
20 YR ADT	=	36,800
PU & PC %	=	74.5
SU %	=	3.9
MU %	=	21.6

DESIGN DESIGNATION
INTERSTATE



FULL SIZE PLANS HAVE BEEN PREPARED USING STANDARD ENGINEERING SCALES. REDUCED SIZED PLANS WILL NOT CONFORM TO STANDARD SCALES. IN MAKING MEASUREMENTS ON REDUCED PLANS, THE ABOVE SCALES MAY BE USED.

J.U.I.E.
JOINT UTILITY LOCATION INFORMATION FOR EXCAVATION
1-800-892-0123



TOTAL LENGTH OF SECTION & PROJECT = 27,695.68 FEET = 5.245 MILES
NET LENGTH OF SECTION & PROJECT = 26,726.84 FEET = 5.062 MILES

STATE OF ILLINOIS
DEPARTMENT OF TRANSPORTATION
DIVISION OF HIGHWAYS

SUBMITTED 3/20 2008

Joseph K. Crone
DEPUTY DIRECTOR OF HIGHWAYS, REGION THREE ENGINEER

May 9 2008
Eric E. Harnett
ENGINEER OF DESIGN AND ENVIRONMENT

May 9 2008
Christine M. Reed
DIRECTOR OF HIGHWAYS, CHIEF ENGINEER

**PRINTED BY THE AUTHORITY
OF THE STATE OF ILLINOIS**

PLOT DATE = 3/19/2008
FILE NAME = c:\p\projects\70475\cover.dgn
PLOT SCALE = 1/8" = 1' IN.
USER NAME = collinb