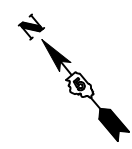


F.A.I. RTE.	SECTION	COUNTY	TOTAL SHEETS	SHEET NO.
74	(20-1)RS-2	DEWITT	97	43
STA. 830+00		TO STA. 845+00		
FED. ROAD DIST. NO.	ILLINOIS	FED. AID PROJECT		

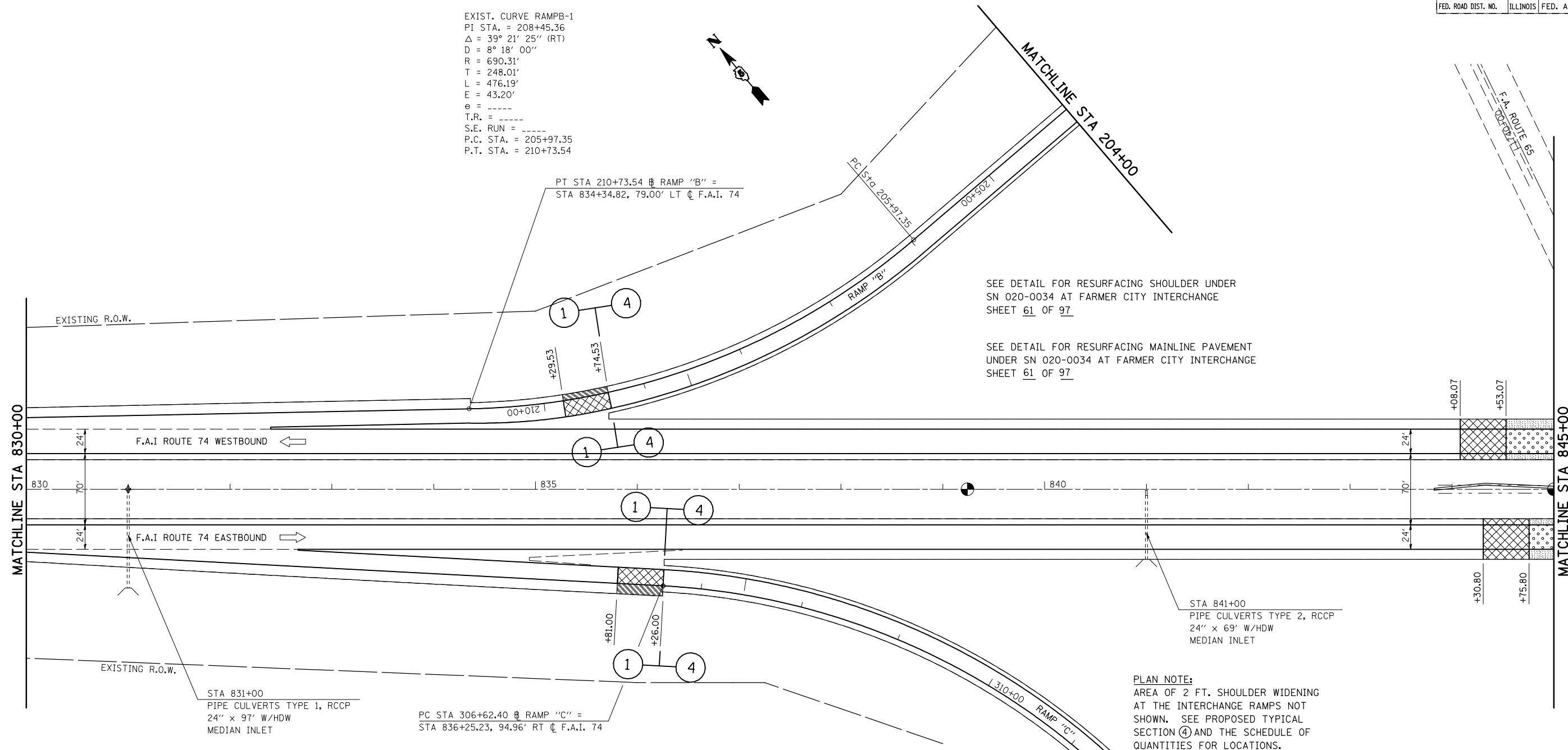
EXIST. CURVE RAMPB-1  
 PI STA. = 208+45.36  
 $\Delta = 39^\circ 21' 25''$  (RT)  
 $D = 8^\circ 18' 00''$   
 $R = 690.31'$   
 $T = 248.01'$   
 $L = 476.19'$   
 $E = 43.20'$   
 $e = \text{-----}$   
 $T.R. = \text{-----}$   
 $S.E. RUN = \text{-----}$   
 $P.C. STA. = 205+97.35$   
 $P.T. STA. = 210+73.54$



PT STA 210+73.54 @ RAMP "B" =  
 STA 834+34.82, 79.00' LT @ F.A.I. 74

SEE DETAIL FOR RESURFACING SHOULDER UNDER  
 SN 020-0034 AT FARMER CITY INTERCHANGE  
 SHEET 61 OF 97

SEE DETAIL FOR RESURFACING MAINLINE PAVEMENT  
 UNDER SN 020-0034 AT FARMER CITY INTERCHANGE  
 SHEET 61 OF 97



STA 831+00  
 PIPE CULVERTS TYPE 1, RCCP  
 24" x 97' W/HDW  
 MEDIAN INLET

PC STA 306+62.40 @ RAMP "C" =  
 STA 836+25.23, 94.96' RT @ F.A.I. 74

STA 841+00  
 PIPE CULVERTS TYPE 2, RCCP  
 24" x 69' W/HDW  
 MEDIAN INLET

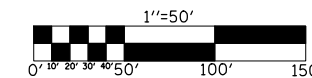
PLAN NOTE:  
 AREA OF 2 FT. SHOULDER WIDENING  
 AT THE INTERCHANGE RAMPS NOT  
 SHOWN. SEE PROPOSED TYPICAL  
 SECTION ④ AND THE SCHEDULE OF  
 QUANTITIES FOR LOCATIONS.

- HOT-MIX ASPHALT SHOULDER TRANSITION (1/2" - 2/4")
- MILLING TRANSITION AREA 2 1/4" - 0" (INTERCHANGE RAMPS) 2 1/4" - 3" (MAINLINE)
- HOT-MIX ASPHALT SURFACE REMOVAL, 3"
- HOT-MIX ASPHALT SURFACE REMOVAL, 1/2"

SEE DETAIL FOR HMA SHOULDER TRANSITION, 1/2" - 2/4" SHEET 59 OF 97

SEE DETAIL FOR MILLING TRANSITION AT INTERCHANGE RAMPS SHEET 60 OF 97

EXIST. CURVE RAMP C-1  
 PI STA. = 309+57.08  
 $\Delta = 46^\circ 14' 02''$  (RT)  
 $D = 8^\circ 18' 00''$   
 $R = 690.31'$   
 $T = 294.68'$   
 $L = 557.03'$   
 $E = 60.27'$   
 $e = \text{-----}$   
 $T.R. = \text{-----}$   
 $S.E. RUN = \text{-----}$   
 $P.C. STA. = 306+62.40$   
 $P.T. STA. = 312+19.45$



REVISIONS	
NAME	DATE

ILLINOIS DEPARTMENT OF TRANSPORTATION  
**PLAN VIEW**  
 F.A.I. ROUTE 74  
 SECTION (20-1)RS-2  
 DEWITT COUNTY

SCALE: VERT. 1"=50'  
 HORIZ. 1"=50'  
 DATE: 06/24/05  
 DRAWN BY: JRP  
 CHECKED BY: