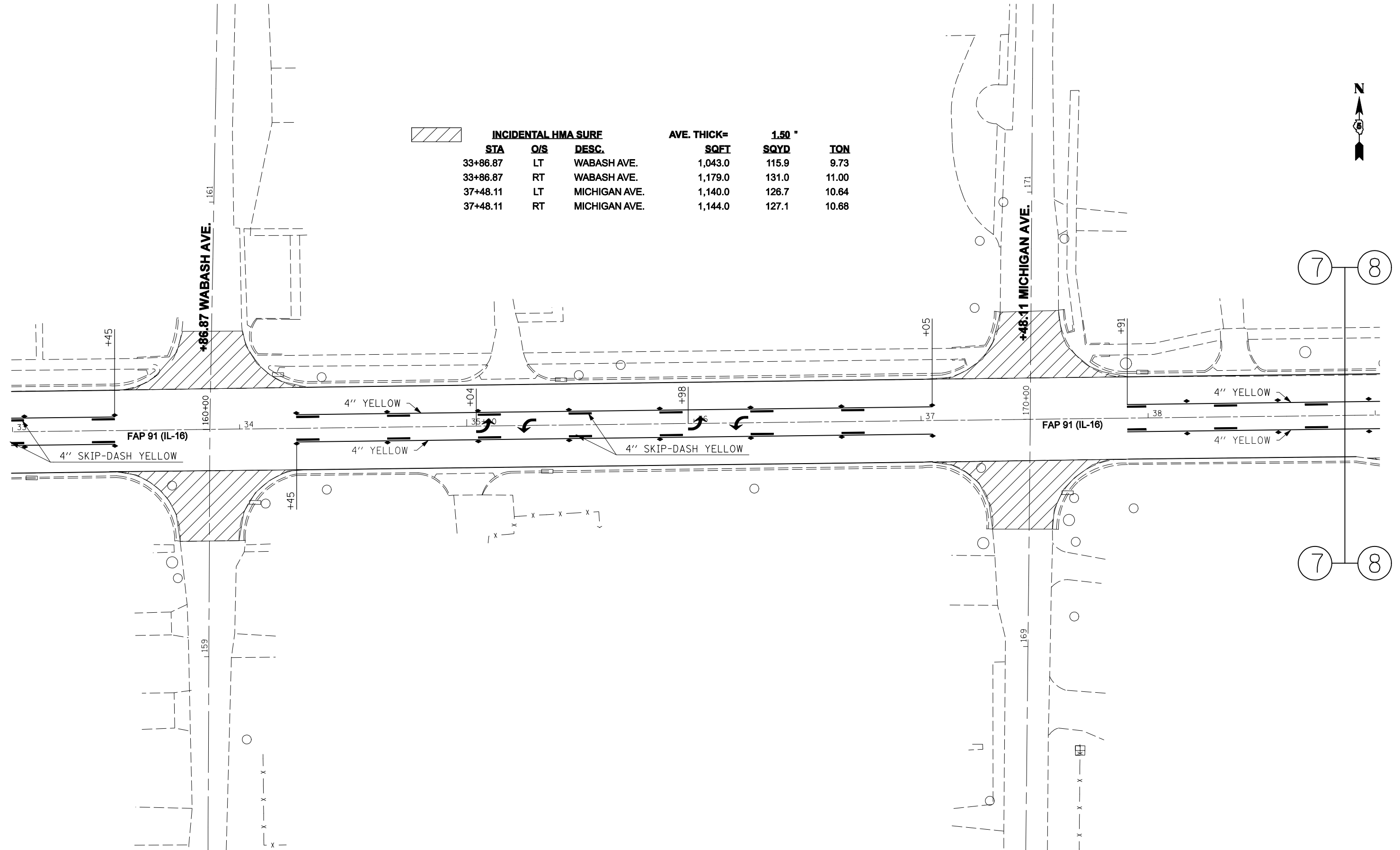


SEC. 1, T 13 N, R 12 W, 2ND PM



| INCIDENTAL HMA SURF | | | AVE. THICK= 1.50 " | | |
|---------------------|-----|---------------|--------------------|-------|-------|
| STA | O/S | DESC. | SQFT | SQYD | TON |
| 33+86.87 | LT | WABASH AVE. | 1,043.0 | 115.9 | 9.73 |
| 33+86.87 | RT | WABASH AVE. | 1,179.0 | 131.0 | 11.00 |
| 37+48.11 | LT | MICHIGAN AVE. | 1,140.0 | 126.7 | 10.64 |
| 37+48.11 | RT | MICHIGAN AVE. | 1,144.0 | 127.1 | 10.68 |



7 8

7 8

SEC. 12, T 13 N, R 12 W, 2ND PM

| | | | |
|---|------------------------------|------------|-----------|
| FILE NAME = | USER NAME = sheehyom | DESIGNED - | REVISED - |
| et\projects\d500807 (v8)\70638tr\paving.dgn | | DRAWN - | REVISED - |
| | PLOT SCALE = 40.0000 ' / IN. | CHECKED - | REVISED - |
| | PLOT DATE = 3/26/2008 | DATE - | REVISED - |

STATE OF ILLINOIS
DEPARTMENT OF TRANSPORTATION

PLAN SHEET PAVING COLD MILLING IL-133 TO LOWER-T IN PARIS

SCALE: SHEET NO. OF SHEETS STA. TO STA.

| F.A.P. RTE. | SECTION | COUNTY | TOTAL SHEETS | SHEET NO. |
|---------------------|---------------------|---------------------------|--------------|--------------------|
| 91 | • 1 RS-4 & 101 RS-6 | EDGAR | 35 | 26 |
| FED. ROAD DIST. NO. | | ILLINOIS FED. AID PROJECT | | CONTRACT NO. 70638 |