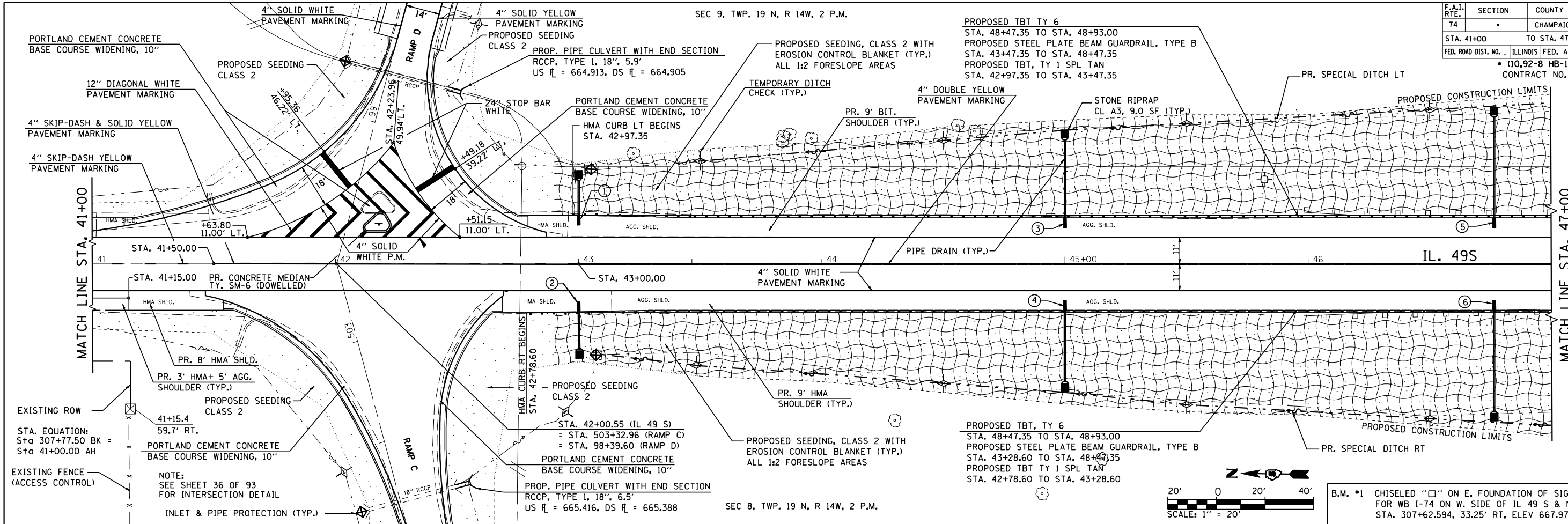
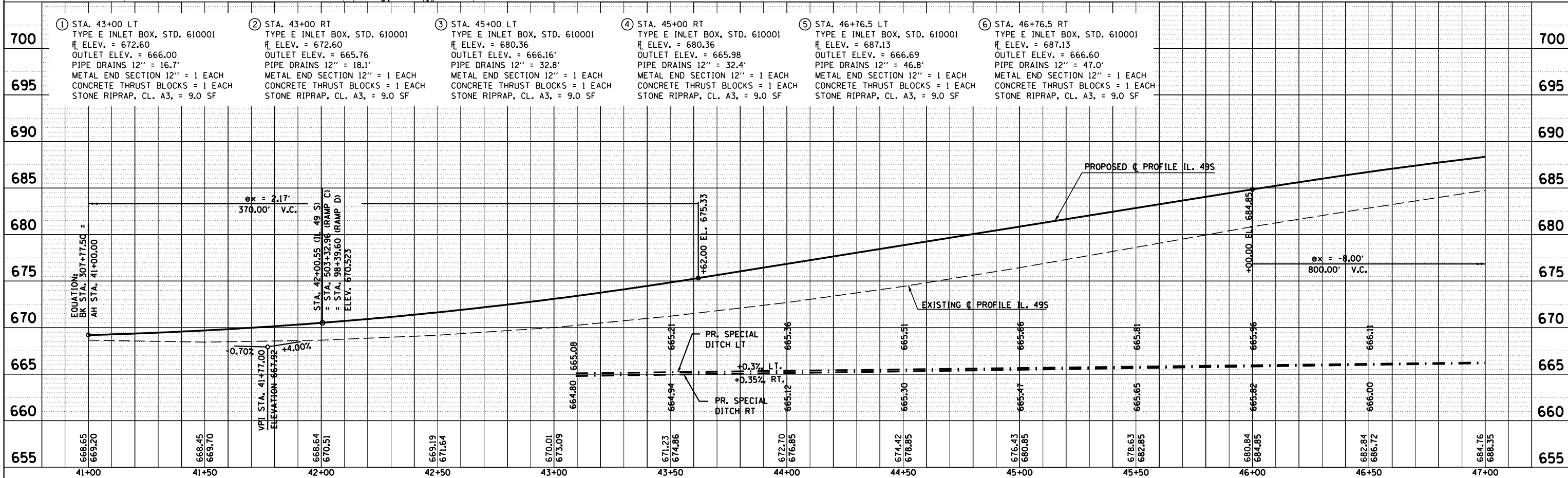


F.A.I. RTE.	SECTION	COUNTY	TOTAL SHEETS	SHEET NO.
74		CHAMPAIGN	93	28
STA. 41+00		TO STA. 47+00		
FED. ROAD DIST. NO. ILLINOIS FED. AID PROJECT				
(10,92-8 HB-1)BR CONTRACT NO. 70695				



B.M. #1 CHISELED "□" ON E. FOUNDATION OF SIGN FOR WB I-74 ON W. SIDE OF IL 49 S & N. OF NW RAMP STA. 307+62.594, 33.25' RT, ELEV 667.975



IL 49S STA. 41+00 TO STA. 47+00

DATE	BY
DATE	BY
DATE	BY

DATE	BY
DATE	BY
DATE	BY