

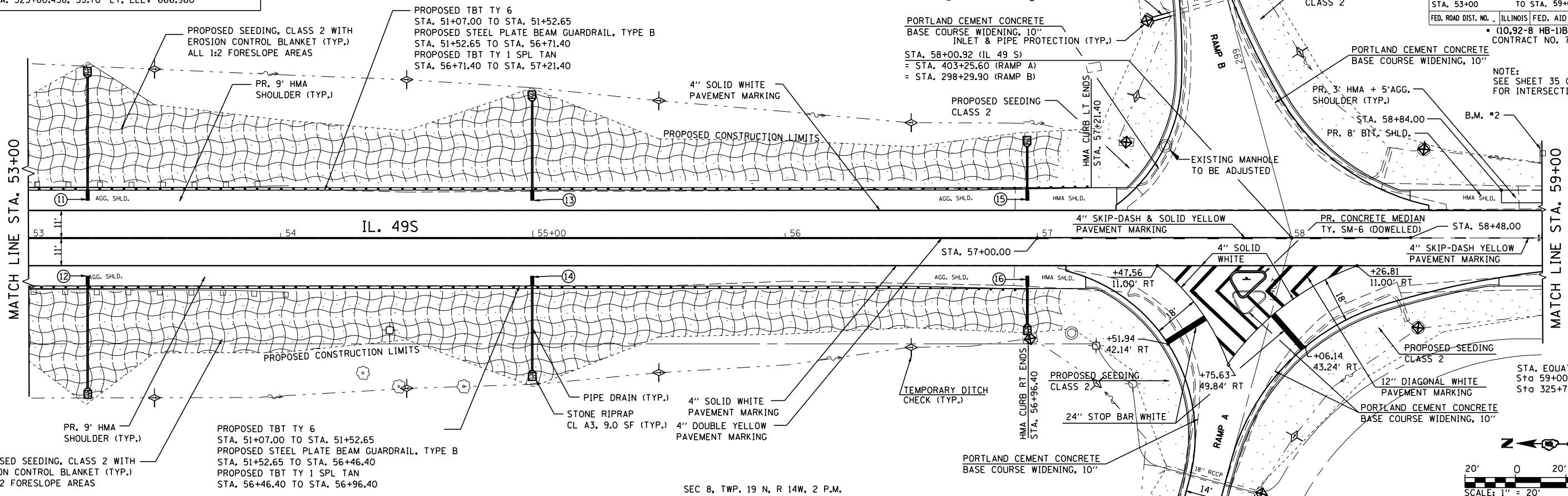
B.M. #2 CHISELED "□" ON E. FOUNDATION OF SIGN FOR EB 1-74 ON E. SIDE OF IL 49 S & S. OF SE RAMP STA. 325+80.458, 33.70' LT, ELEV 666.960

SEC 9, TWP. 19 N, R 14W, 2 P.M.

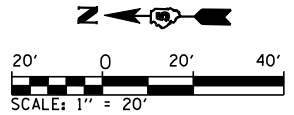
PROP. PIPE CULVERT WITH END SECTION
RCCP, TY.1, 18", 7.5'
US \bar{r} = 665.106, DS \bar{r} = 665.051

F.A.I. RTE.	SECTION	COUNTY	TOTAL SHEETS	SHEET NO.
74		CHAMPAIGN	93	30

STA. 53+00 TO STA. 59+00
ILLINOIS FED. AID PROJECT
(10,92-8 HB-1)BR
CONTRACT NO. 70695
NOTE:
SEE SHEET 35 OF 93
FOR INTERSECTION DETAIL

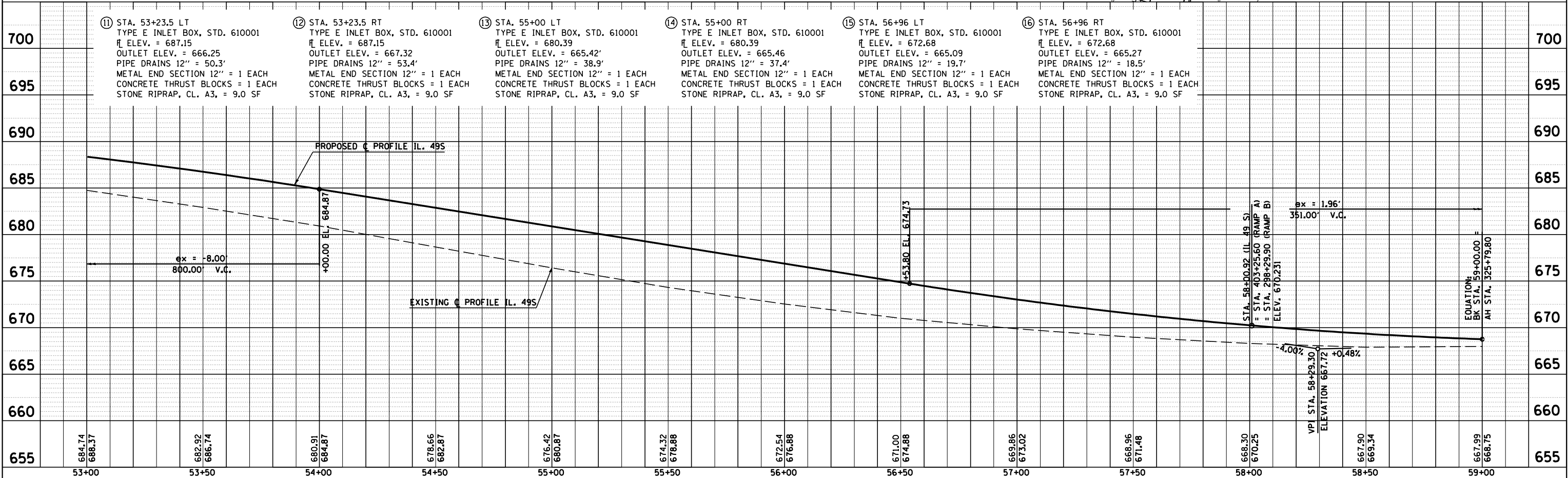


SEC 8, TWP. 19 N, R 14W, 2 P.M.



PLAN	DATE
SURVEYED	
PLOTTED	
CHECKED	
BY	
NO.	

PROFILE	DATE
SURVEYED	
PLOTTED	
CHECKED	
BY	
NO.	



IL 49S STA. 53+00 TO STA. 59+00