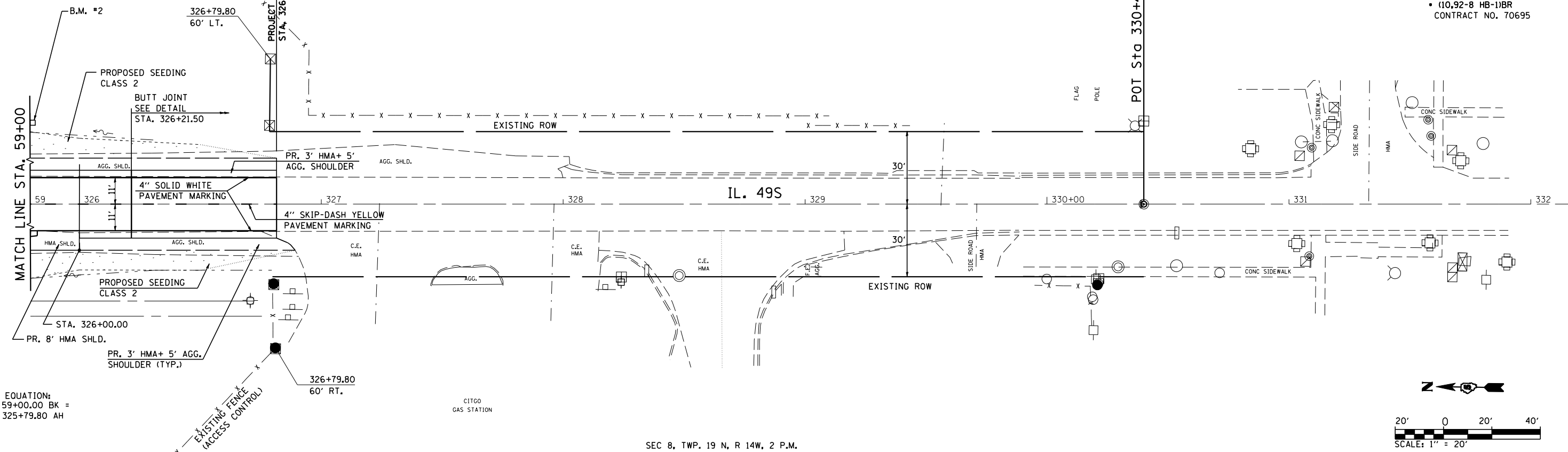


B.M. #2 CHISELED "□" ON E. FOUNDATION OF SIGN FOR EB I-74 ON E. SIDE OF IL 49 S & S. OF SE RAMP STA. 325+80.458, 33.70' LT, ELEV 666.960

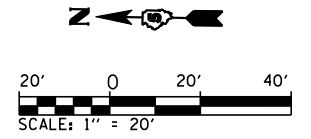
SEC 9, TWP. 19 N, R 14W, 2 P.M.

F.A.I. RTE.	SECTION	COUNTY	TOTAL SHEETS	SHEET NO.
74		CHAMPAIGN	93	31
STA. 59+00		TO STA. 326+81.50		
FED. ROAD DIST. NO. ILLINOIS FED. AID PROJECT				
• (10,92-8 HB-1)BR				
CONTRACT NO. 70695				

PLAN	SURVEYED	BY	DATE
	PLOTTED		
	CHECKED		
	NO. OF WAY CHECKED		
	CADD FILE NAME		

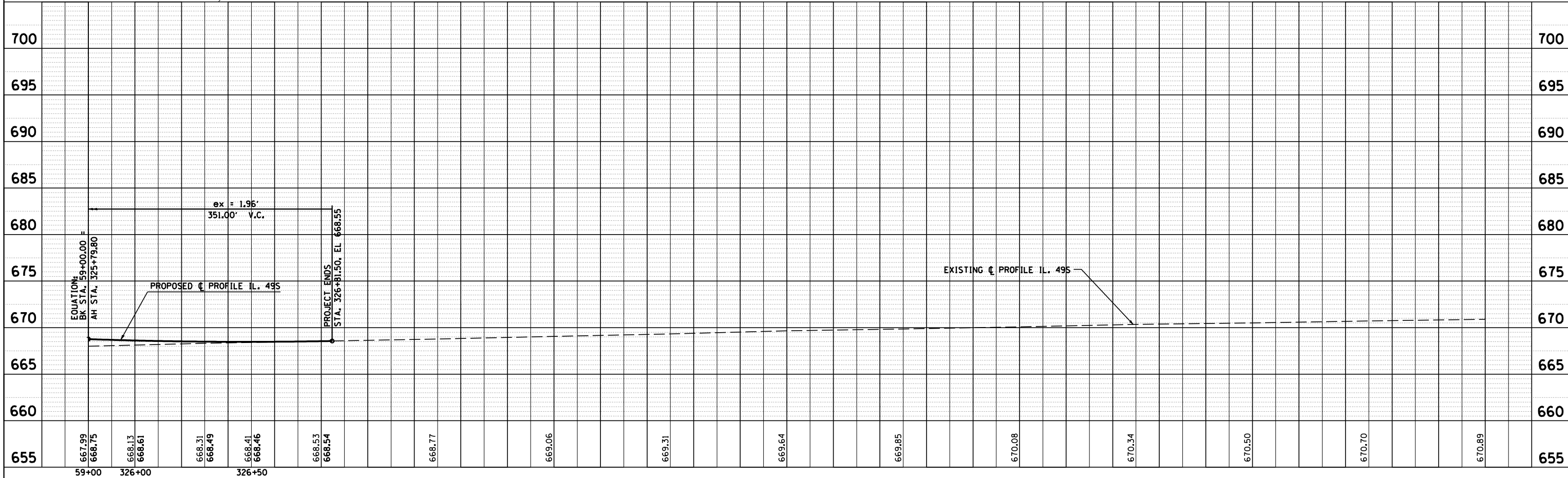


STA. EQUATION:
Sta 59+00.00 BK =
Sta 325+79.80 AH



SEC 8, TWP. 19 N, R 14W, 2 P.M.

PROFILE	SURVEYED	BY	DATE
	PLOTTED		
	CHECKED		
	NO. OF WAY CHECKED		
	STRUCTURE NOTATIONS CHRD		



IL 49S STA. 59+00 TO STA. 326+81.50