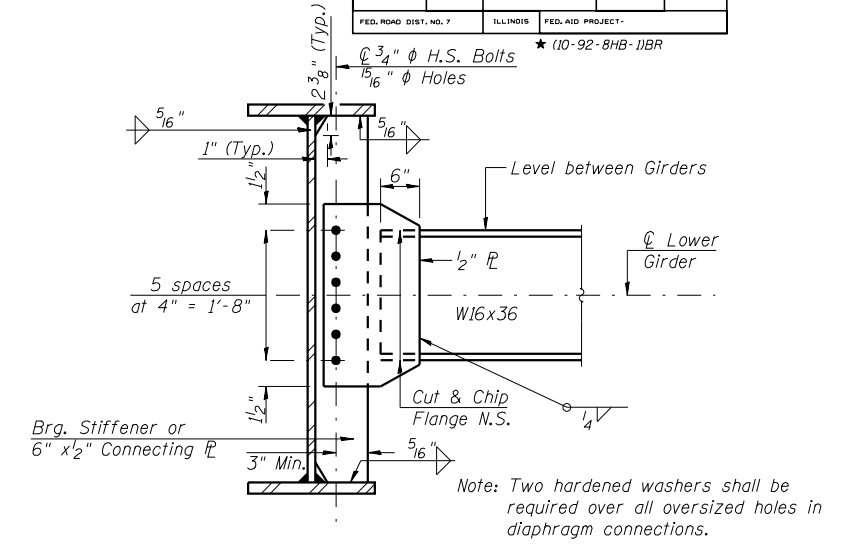
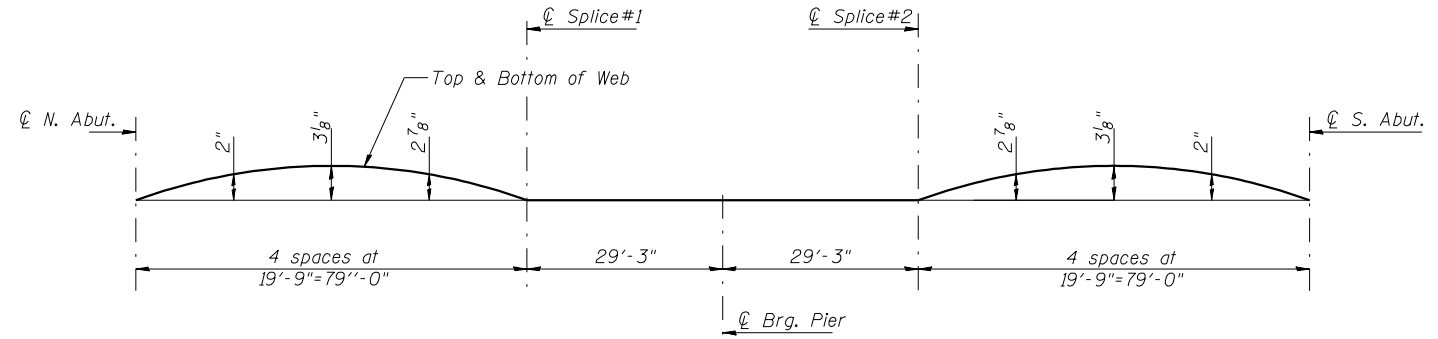


**FRAMING PLAN**



**INTERIOR DIAPHRAGM D**

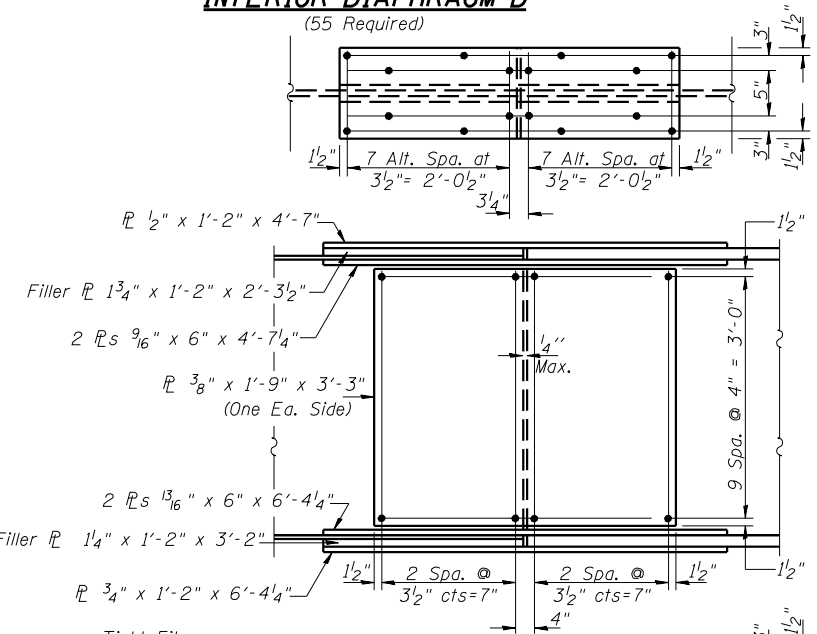


**CAMBER DIAGRAM**

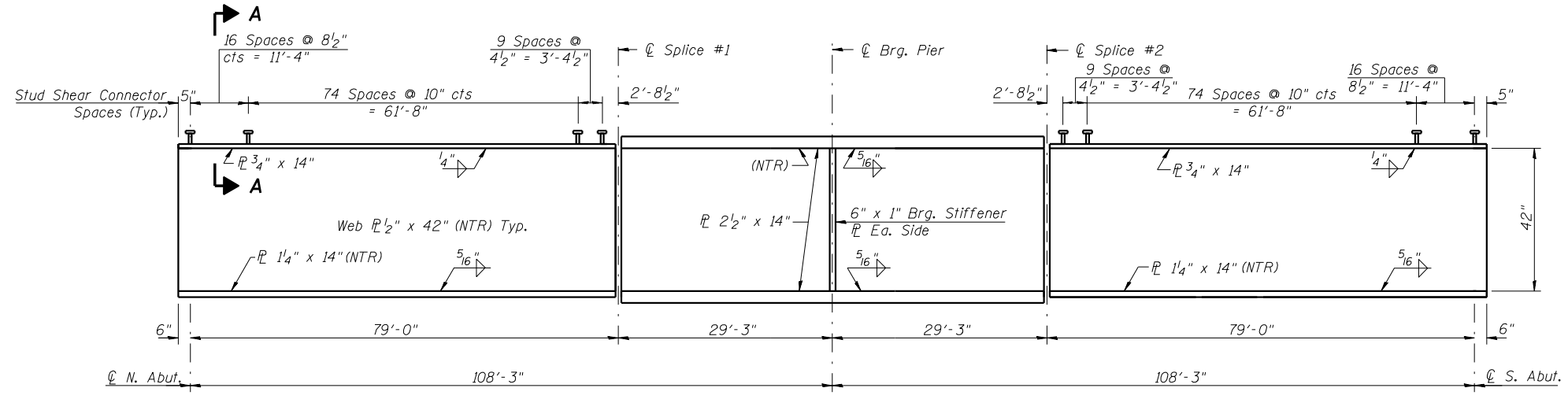
**\* TOP OF WEB ELEVATIONS**

	Girder 1 & 6	Girder 2 & 5	Girder 3 & 4
℄ N. Abut.	691.192	691.342	691.458
℄ Splice #1	691.628	691.778	691.894
℄ Brg. Pier	691.625	691.775	691.891
℄ Splice #2	691.622	691.772	691.888
℄ S. Abut.	691.198	691.348	691.464

\*For Fabrication Only



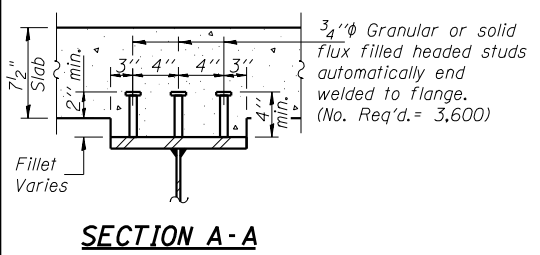
**FIELD SPLICE DETAIL**



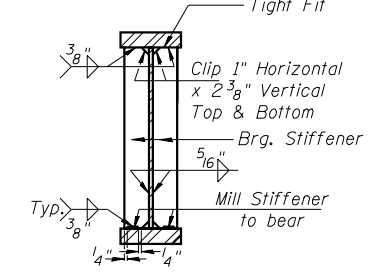
**GIRDER ELEVATION**

"NTR" denotes plates to which notch toughness requirements are applicable.

Notes: Girder plates, Brg. Stiffeners, and splice plates shall be AASHTO M270 Grade 50. Diaphragms and connecting plates shall be AASHTO M270 Grade 36.



**SECTION A-A**



**SECTION AT PIER**

ILLINOIS DEPARTMENT OF TRANSPORTATION  
**FRAMING PLAN & GIRDER DETAILS**  
 FAS RTE 518 (IL 49S) & FAP RTE 836 (C.H.22)  
 OVER FAI RTE 74 (I-74)  
 SECTION (10-92-8HB-1) BR  
 CHAMPAIGN COUNTY  
 STA. 100+88.67 (I-74)  
 STA. 50+00.00 (IL 49S & C.H. 22)  
 STRUCTURE NO. 010-0277

REVISIONS	
NAME	DATE

**LIN ENGINEERING, LTD.**  
 20 S. Chestnut | Channahon, Illinois 61629  
 (815) 483-4648 | Fax (815) 483-4706  
 Designed By: MTH | Checked By: STD | Drawn By: JMD  
 Date: 11/02 | File: 0100277.DWG