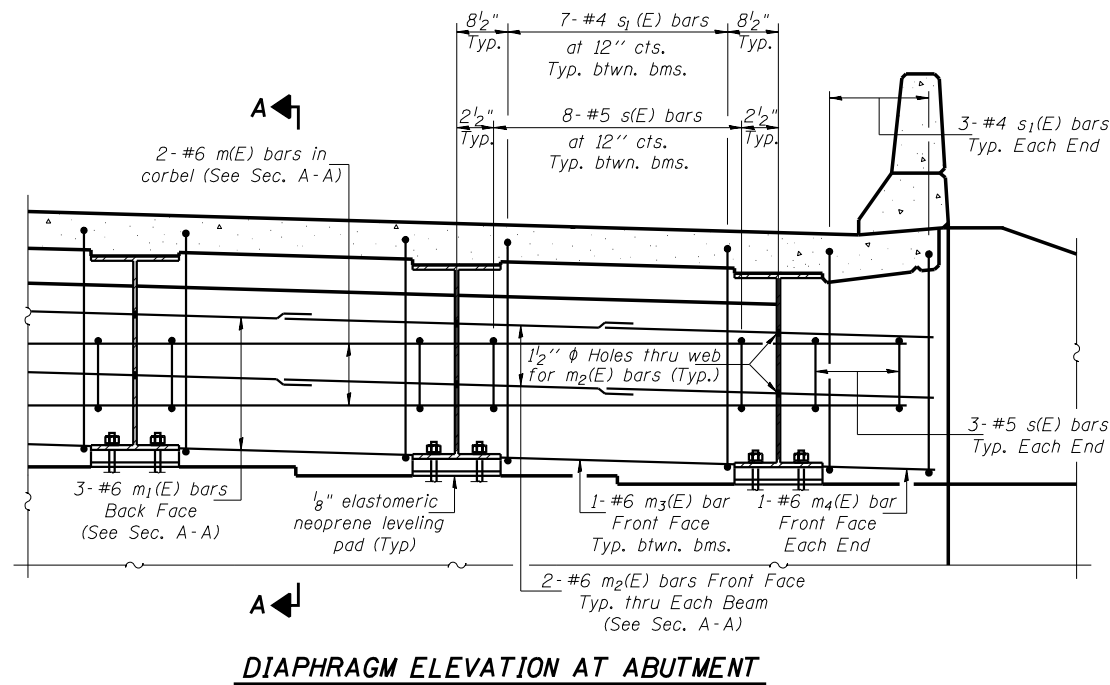


ROUTE NO.	SECTION	COUNTY	TOTAL SHEETS	SHEET NO.
FAI 74	★	CHAMPAIGN	93	49
FED. ROAD DIST. NO. 7	ILLINOIS	FED. AID PROJECT		

★ (10-92-8HB-1)BR

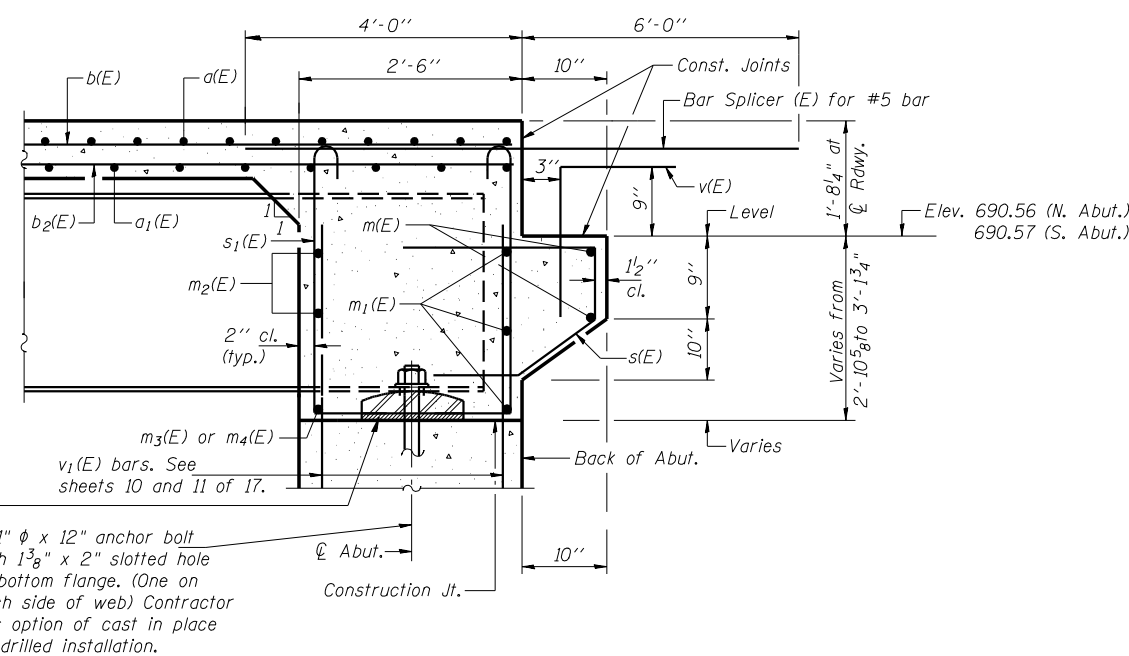


Notes: Reinforcement bars in diaphragm are billed with superstructure on sheet 6 of 17.  
Concrete in diaphragm is included with Concrete Superstructure on sheet 6 of 17.  
For details of bars s(E) & s1(E) see sheet 6 of 17.  
The s(E) and s1(E) bars shall be placed parallel to the beams. Spacing for these bars shall be at right angles to the beams.  
For anchor bolt details see sheet 14 of 17.  
For location of holes through web. See Sheet 8 of 17.  
See Sheet 13 of 17 for Bar Splicer Details.

**MIN. BAR LAP**  
#6 bar = 2'-9"

1/8" elastomeric neoprene leveling pad according to Article 1052.02 of the Standard Specifications. Cost included with Structural Steel.

1" φ x 12" anchor bolt with 1 3/8" x 2" slotted hole in bottom flange. (One on each side of web) Contractor has option of cast in place or drilled installation.



**SECTION A-A**

Dimensions at right angles to abutment.  
\* Cost included with Concrete Structures.

ILLINOIS DEPARTMENT OF TRANSPORTATION  
**END DIAPHRAGM DETAILS**  
FAS RTE 518 (IL 49S) & FAP RTE 836 (C.H.22)  
OVER FAI RTE 74 (I-74)  
SECTION (10-92-8HB-1) BR  
CHAMPAIGN COUNTY  
STA. 1000+88.67 (I-74)  
STA. 50+00.00 (IL 49S & C.H. 22)  
STRUCTURE NO. 010-0277

REVISIONS	
NAME	DATE

**LIN ENGINEERING, LTD.**  
210 N. CHESTNUT  
CHAMPAIGN, ILLINOIS 62629  
DESIGNED BY: MTH  
CHECKED BY: STD  
DATE: 11/02  
DRAWN BY: JMD  
FILE: 0100277.DGN