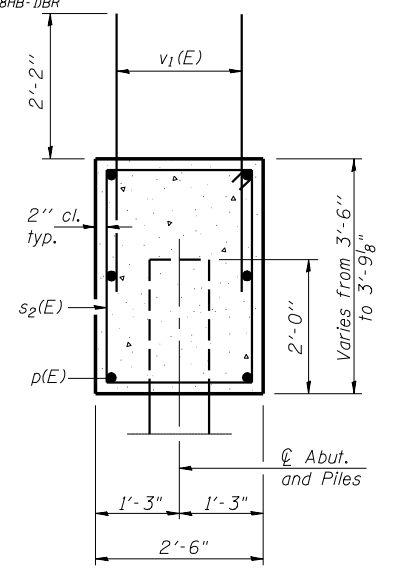
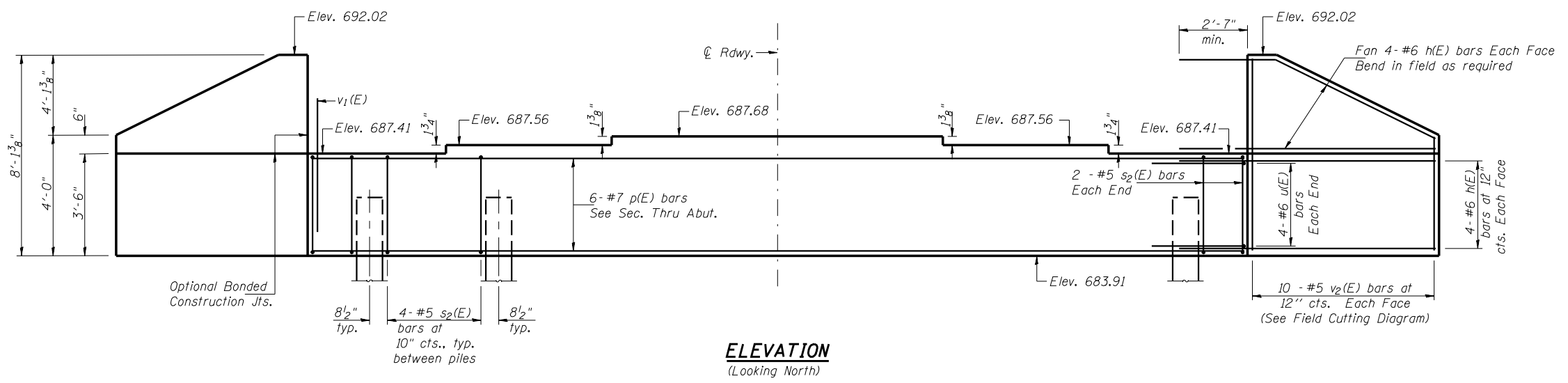


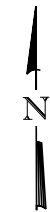
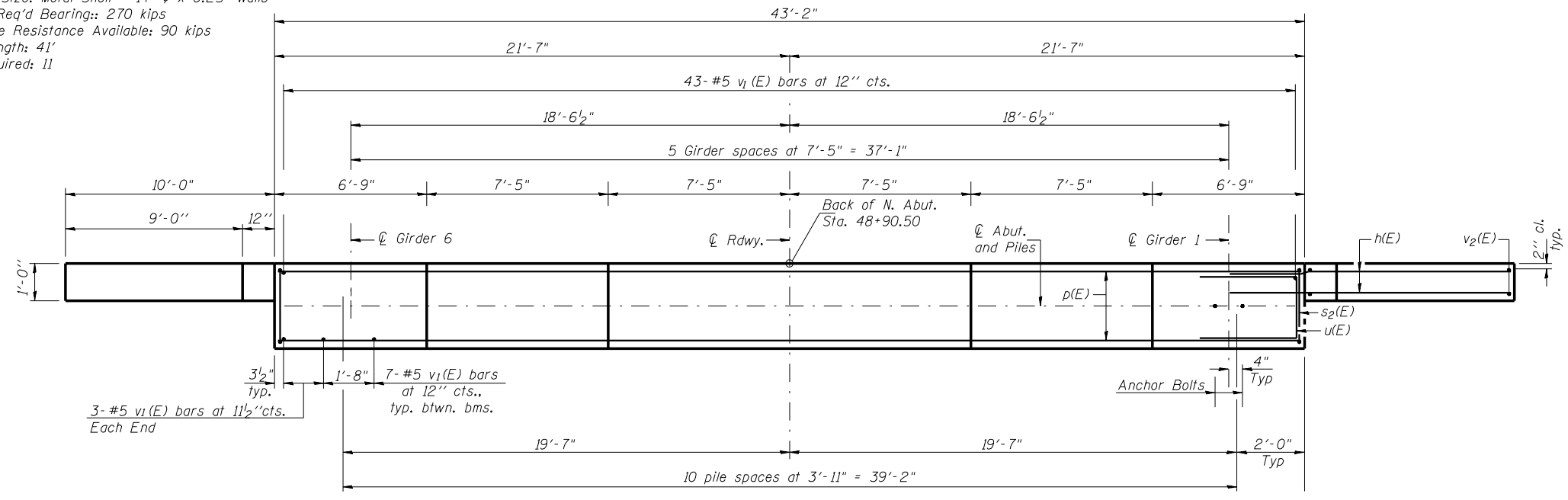
ROUTE NO.	SECTION	COUNTY	TOTAL SHEETS	SHEET NO.	SHEET NO. 10 17 SHEETS
FAI 74	★	CHAMPAIGN	93	50	
FED. ROAD DIST. NO. 7		ILLINOIS	FED. AID PROJECT		

Notes: Four steps monolithically with cap.  
Reinforcement bars designated (E) shall be epoxy coated.  
Space reinforcement in cap to miss anchor bolts.



**PILE DATA**

Type & Size: Metal Shell - 14"  $\phi$  x 0.25" Walls  
Normal Req'd Bearing: 270 kips  
Allowable Resistance Available: 90 kips  
Est. Length: 41'  
No. Required: 11

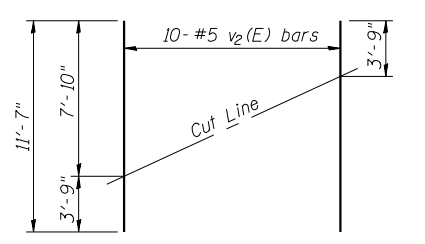


**SEC. THRU ABUT.**

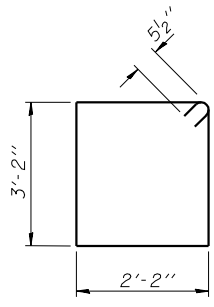
**BILL OF MATERIAL**

Bar	No.	Size	Length	Shape
h(E)	32	#6	12'-6"	—
p(E)	6	#7	42'-11"	—
s2(E)	44	#5	11'-7"	□
u(E)	8	#6	10'-1"	—
v1(E)	82	#5	4'-4"	—
v2(E)	20	#5	11'-7"	—
Concrete Structures		Cu. Yd.	18.3	
Reinforcement Bars, Epoxy Coated		Pound	2400	
Structure Excavation		Cu. Yd.	35.5	
Furnishing Metal Shell Piles 14" x 0.25"		Foot	451	
Driving Piles		Foot	451	

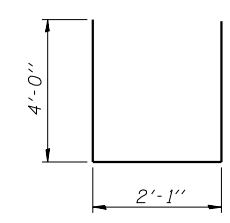
**PLAN**



**FIELD CUTTING DIAGRAM**  
Order v2(E) full length. Cut as shown and use remainder of bars in opposite face.



**BAR s2(E)**



**BAR u(E)**

**LIN ENGINEERING, LTD.**  
210 N. Chestnut  
Champaign, Illinois 61829  
Designed By: MTH  
Checked By: STD  
Date: 11/02

REVISIONS	
NAME	DATE

ILLINOIS DEPARTMENT OF TRANSPORTATION  
**NORTH ABUTMENT**  
FAS RTE 518 (IL 49S) & FAP RTE 836 (C.H.22)  
OVER FAI RTE 74 (I-74)  
SECTION (10-92-8HB-1) BR  
CHAMPAIGN COUNTY  
STA. 1000+88.67 (I-74)  
STA. 50+00.00 (IL 49S & C.H. 22)  
STRUCTURE NO. 010-0277