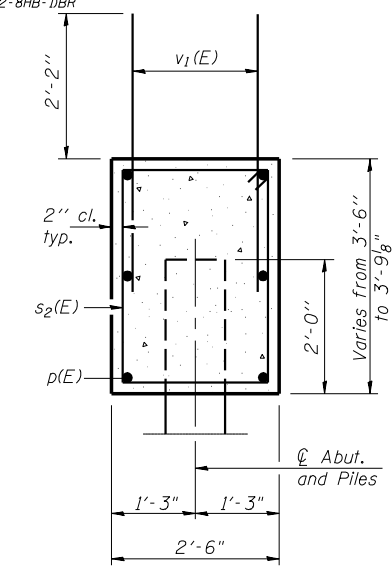
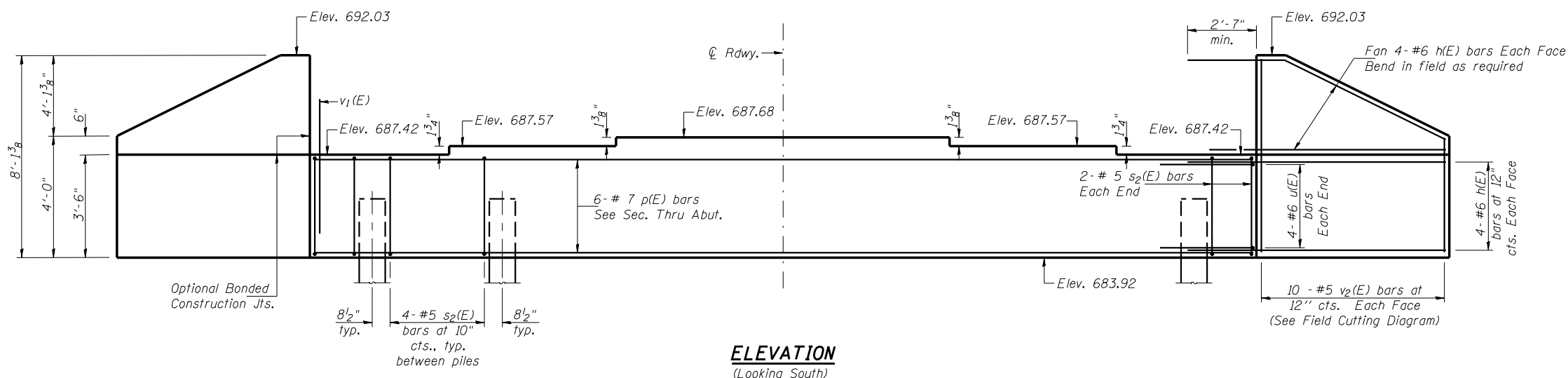


Notes: Pour steps monolithically with cap.  
Reinforcement bars designated (E) shall be epoxy coated.  
Space reinforcement in cap to miss anchor bolts.

CONTRACT 70695

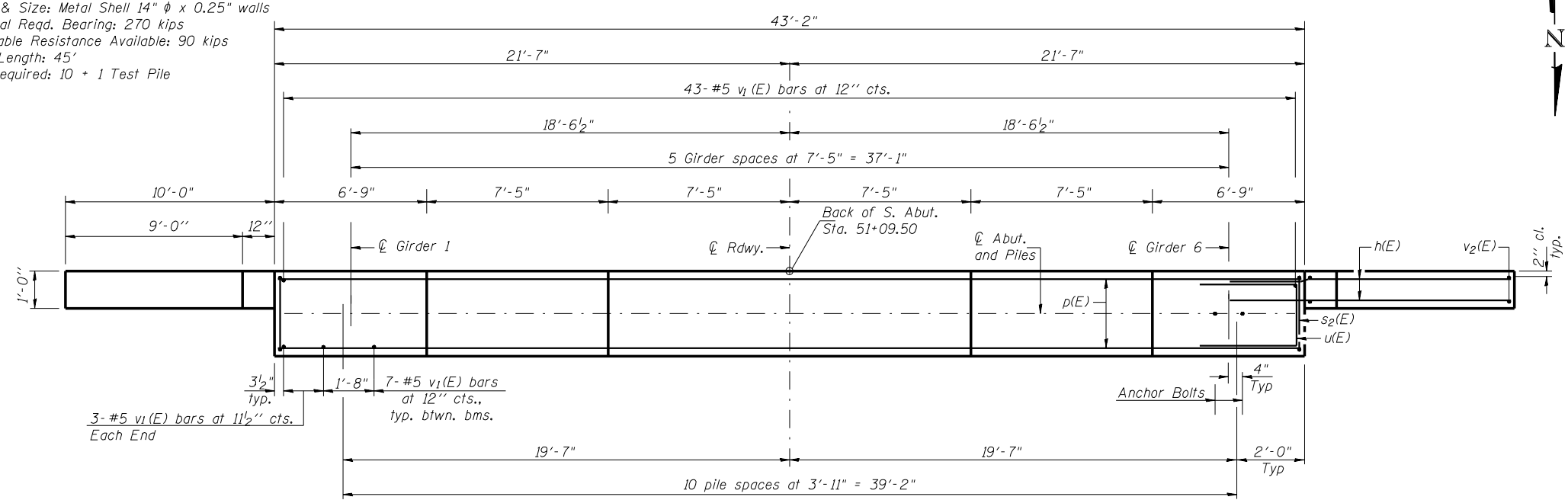
ROUTE NO.	SECTION	COUNTY	TOTAL SHEETS	SHEET NO.
FAI 74	*	CHAMPAIGN	93	51
FED. ROAD DIST. NO. 7	ILLINOIS	FED. AID PROJECT		

★ (10-92-8HB-1)BR



**PILE DATA**

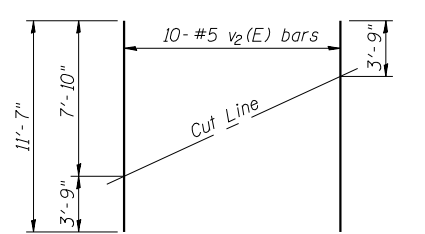
Type & Size: Metal Shell 14"  $\phi$  x 0.25" walls  
Nominal Reqd. Bearing: 270 kips  
Allowable Resistance Available: 90 kips  
Est. Length: 45'  
No. Required: 10 + 1 Test Pile



**BILL OF MATERIAL**

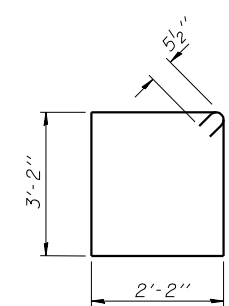
Bar	No.	Size	Length	Shape
h(E)	32	#6	12'-6"	—
p(E)	6	#7	42'-11"	—
s2(E)	44	#5	11'-7"	□
u(E)	8	#6	10'-1"	—
v1(E)	82	#5	4'-4"	—
v2(E)	20	#5	11'-7"	—
Concrete Structures		Cu. Yd.	18.3	
Reinforcement Bars, Epoxy Coated		Pound	2400	
Structure Excavation		Cu. Yd.	35.5	
Furnishing Metal Shell Piles 14" x 0.25"		Foot	450	
Driving Piles		Foot	450	
Test Pile Metal Shells		Each	1	

**PLAN**

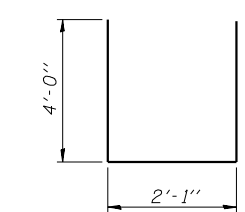


**FIELD CUTTING DIAGRAM**

Order v2(E) full length. Cut as shown and use remainder of bars in opposite face.



**BAR s2(E)**



**BAR u(E)**

**LIN ENGINEERING, LTD.**

210 N. Chestnut  
Chattanooga, Illinois 62629  
Desiged By: MTH  
Checked By: STD  
Date: 11/02

REVISIONS	
NAME	DATE

ILLINOIS DEPARTMENT OF TRANSPORTATION  
**SOUTH ABUTMENT**  
FAS RTE 518 (IL 49S) & FAP RTE 836 (C.H.22)  
OVER FAI RTE 74 (I-74)  
SECTION (10-92-8HB-1) BR  
CHAMPAIGN COUNTY  
STA. 1000+88.67 (I-74)  
STA. 50+00.00 (IL 49S & C.H. 22)  
STRUCTURE NO. 010-0277