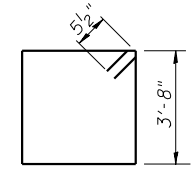
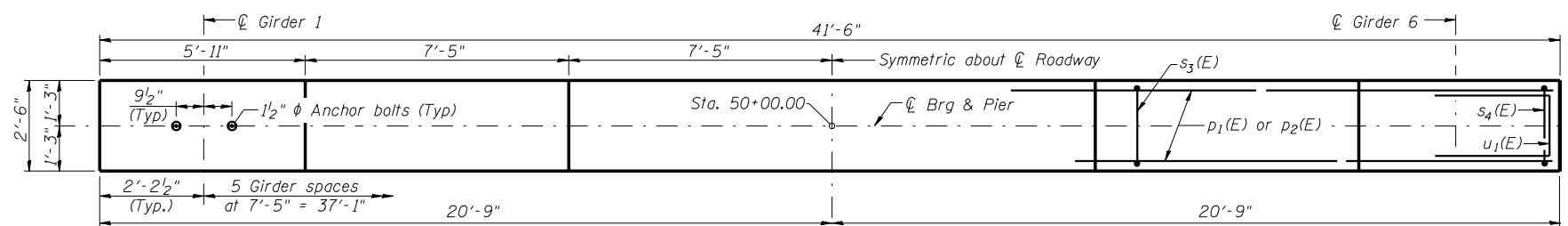


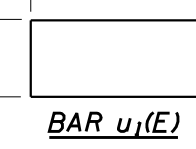
ROUTE NO.	SECTION	COUNTY	TOTAL SHEETS	SHEET NO.
FAI 74	*	CHAMPAIGN	93	52
FED. ROAD DIST. NO. 7	ILLINOIS	FED. AID PROJECT	CONTRACT 70695	
★ (10-92-8HB-1)BR				

- Notes:
1. Space reinforcement in cap to miss anchor bolts.
 2. Pour steps monolithically with cap.
 3. The existing Piles shall be cut off 1'-0" below the bottom of the new footing.

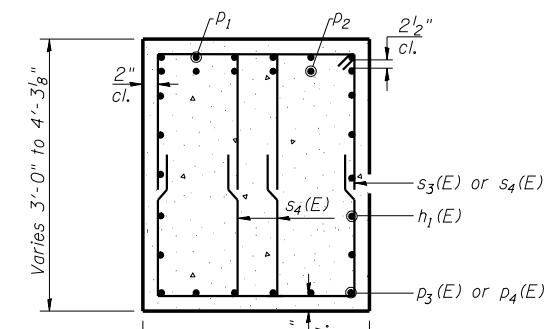
MIN BAR LAP
#5 = 2'-2"



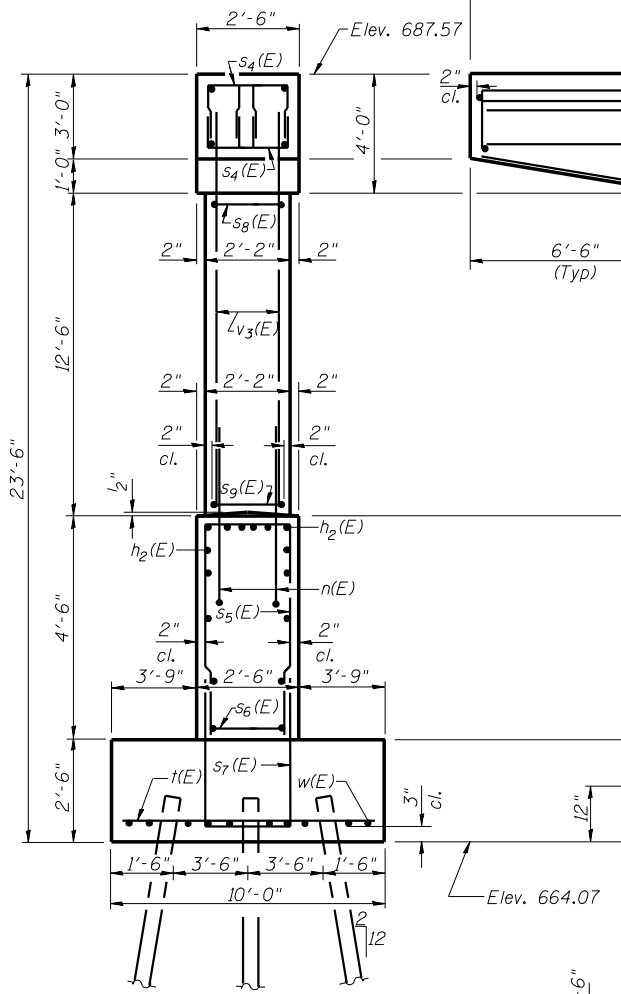
BAR s₃(E)



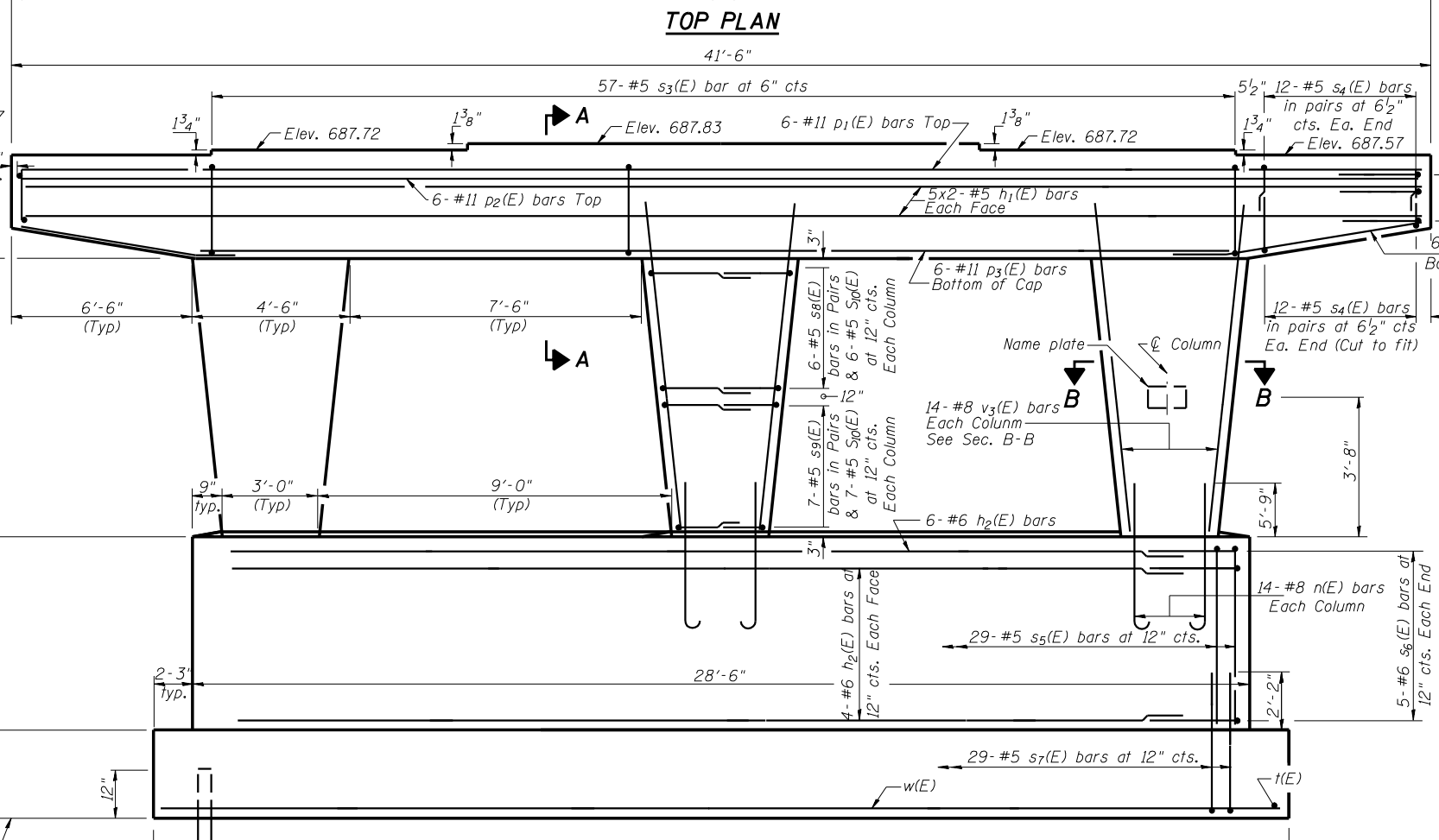
BAR u₁(E)



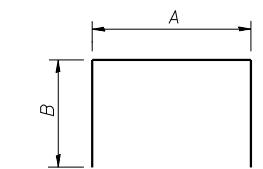
SECTION A-A



END VIEW



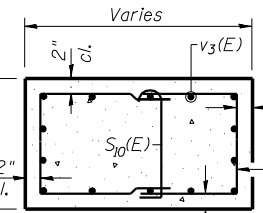
ELEVATION
(Looking South)



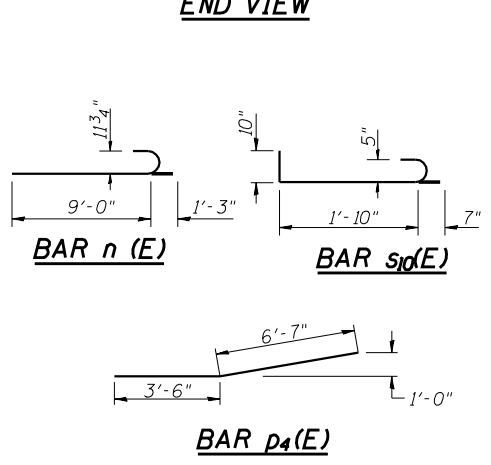
BARS p₁ & s₄ THRU s₉

A & B DIMENSIONS

Bar	A	B
p ₁ (E)	41'-0"	2'-6"
s ₄ (E)	1'-6"	2'-11"
s ₅ (E)	2'-2"	4'-3"
s ₆ (E)	2'-1"	2'-6"
s ₇ (E)	2'-2"	4'-5"
s ₈ (E)	1'-10"	3'-2"
s ₉ (E)	1'-10"	2'-9"



SECTION B-B

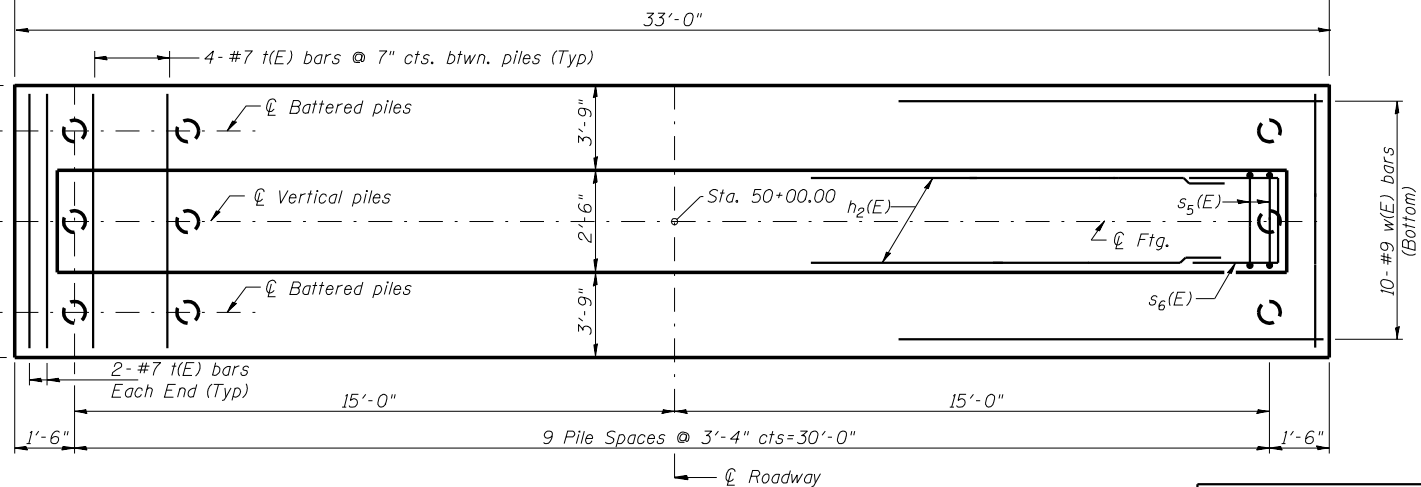


BILL OF MATERIAL

Bar	No.	Size	Length	Shape
h ₁ (E)	20	#5	21'-8"	—
h ₂ (E)	14	#6	28'-2"	—
n(E)	42	#8	10'-3"	—
p ₁ (E)	6	#11	46'-0"	—
p ₂ (E)	6	#11	41'-0"	—
p ₃ (E)	6	#11	28'-0"	—
p ₄ (E)	12	#6	10'-1"	—
s ₃ (E)	57	#5	12'-7"	—
s ₄ (E)	96	#5	7'-4"	—
s ₅ (E)	29	#5	10'-8"	—
s ₆ (E)	10	#6	7'-1"	—
s ₇ (E)	29	#5	11'-0"	—
s ₈ (E)	36	#5	8'-2"	—
s ₉ (E)	42	#5	7'-4"	—
s ₁₀ (E)	39	#5	3'-3"	—
t(E)	40	#7	9'-8"	—
u ₁ (E)	8	#6	6'-1"	—
u ₂ (E)	42	#8	14'-6"	—
w(E)	10	#9	32'-8"	—
Structure Excavation		Cu. Yd.	76.7	
Concrete Structures		Cu. Yd.	67.9	
Reinforcement Bars, Epoxy Coated		Pound	12410	
Furnishing Metal Shell Piles 14" x 0.25"		Foot	1170	
Driving Piles		Foot	1170	

PILE DATA

Type & Size - Metal shell - 14"φ x 0.25" walls
 Nominal Required Bearing: 270 kips
 Allowable Resistance Available: 90 kips
 Est. Length - 39'
 No. Req'd. - 30



FOOTING PLAN

LIN ENGINEERING, LTD.
 210 N. Chestnut
 Champaign, Illinois 62629
 (217) 485-1068
 FAX (217) 485-4708
 Designed By: MTH
 Checked By: STD
 Drawn By: JMD
 Date: 11/02
 File: 0100277.DGN

REVISIONS	
NAME	DATE

ILLINOIS DEPARTMENT OF TRANSPORTATION
PIER DETAILS
 FAS RTE 518 (IL 49S) & FAP RTE 836 (C.H.22)
 OVER FAI RTE 74 (I-74)
 SECTION (10-92-8HB-1) BR
 CHAMPAIGN COUNTY
 STA. 1000+88.67 (I-74)
 STA. 50+00.00 (IL 49S & C.H. 22)
 STRUCTURE NO. 010-0277