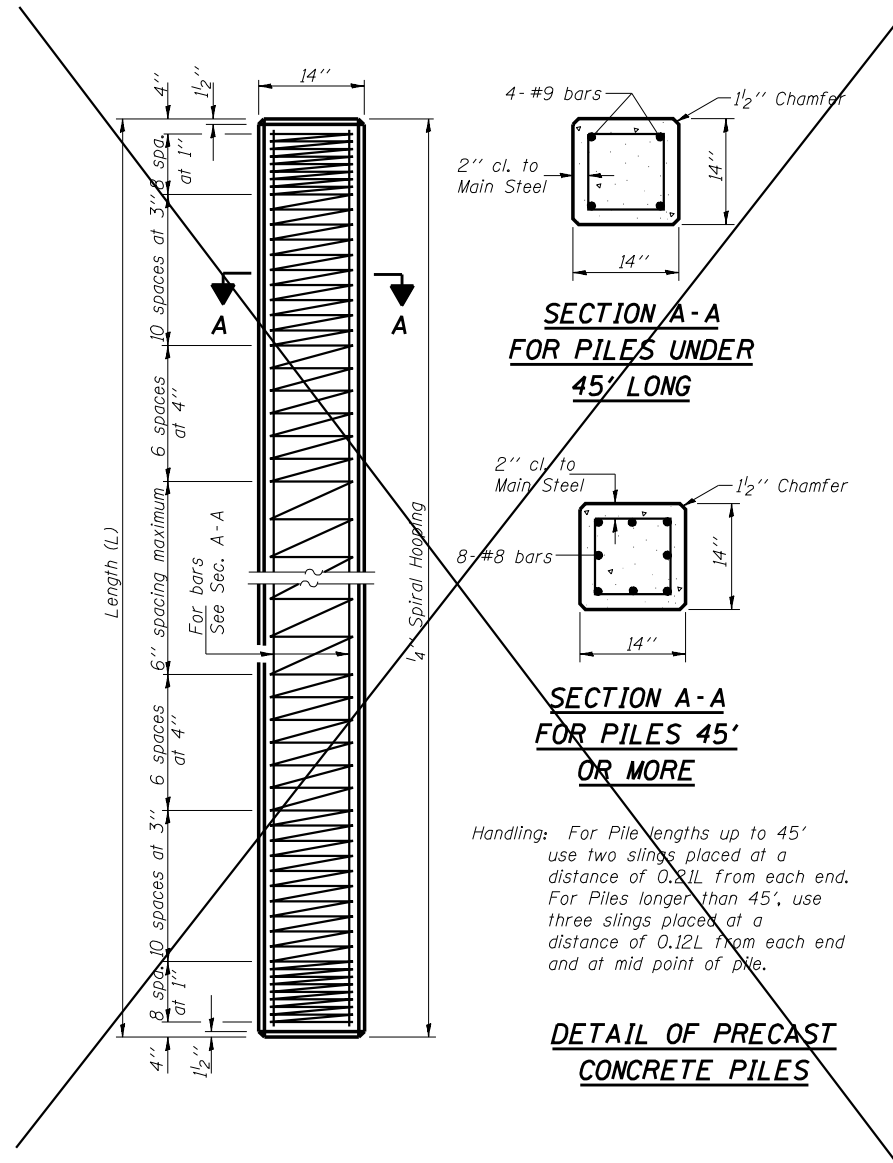
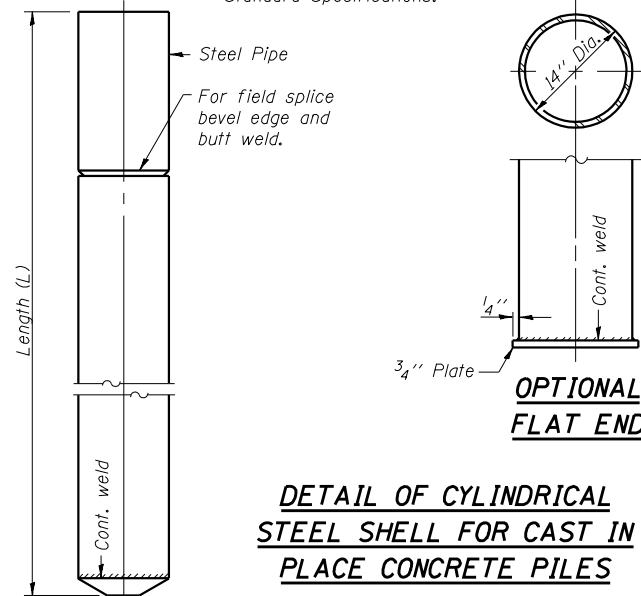


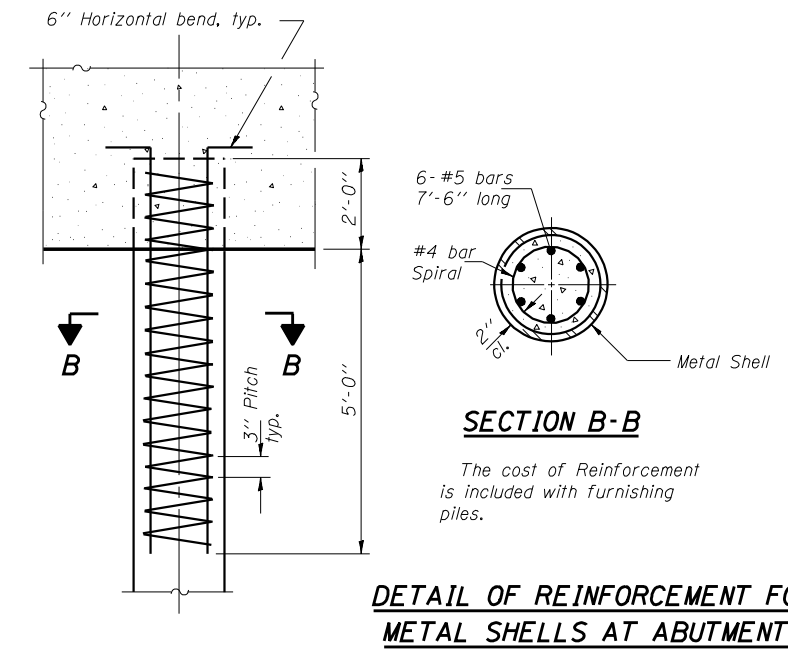
ROUTE NO.	SECTION	COUNTY	TOTAL SHEETS	SHEET NO.
FAI 74	★	CHAMPAIGN	93	55
FED. ROAD DIST. NO. 7		ILLINOIS	FED. AID PROJECT	
★ (10-92-8HB-1)BR				



Notes: Driving and bearing ends of pipe shall be cut square. The thickness of the shell shall be 0.250 inches with a tolerance of 5%. The shell shall be according to Article 1006.05(a) of the Standard Specifications.



Note: Metal Shell Piles shall be according to ASTM A 252 Grade 3.



The cost of Reinforcement is included with furnishing piles.

REVISIONS	
NAME	DATE

ILLINOIS DEPARTMENT OF TRANSPORTATION  
**PILE DETAIL**  
 FAS RTE 518 (IL 49S) & FAP RTE 836 (C.H.22)  
 OVER FAI RTE 74 (I-74)  
 SECTION (10-92-8HB-1) BR  
 CHAMPAIGN COUNTY  
 STA. 1000+88.67 (I-74)  
 STA. 50+00.00 (IL 49S & C.H. 22)  
 STRUCTURE NO. 010-0277