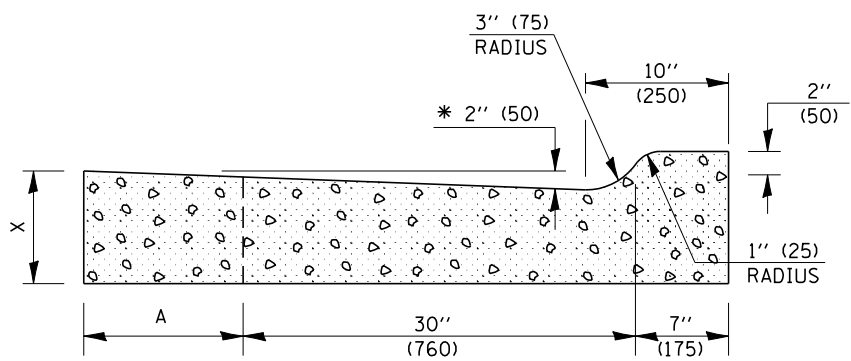
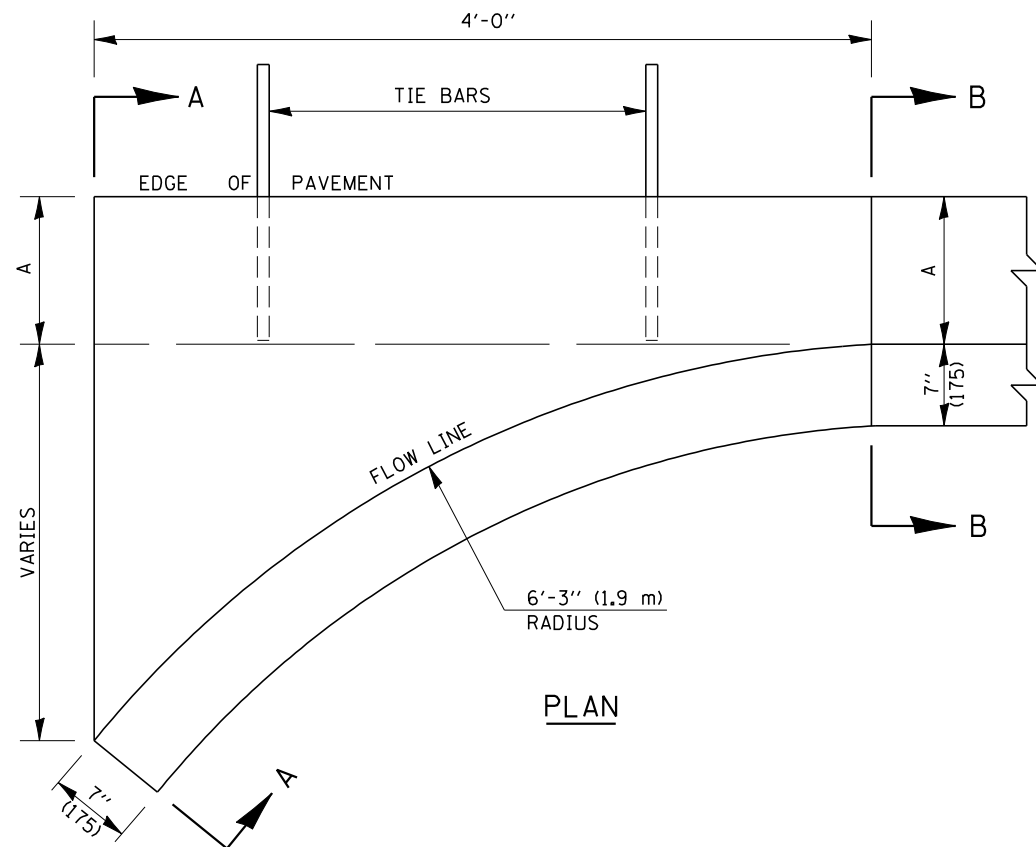


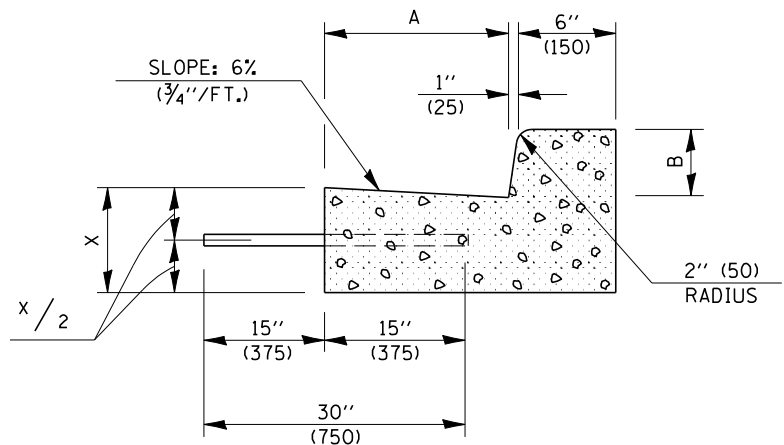
RTE.	SECTION	COUNTY	TOTAL SHEETS	SHEET NO.
74	.	CHAMPAIGN	93	61
STA.		TO STA.		
FED. ROAD DIST. NO.	ILLINOIS	FED. AID PROJECT		
		• (10,92-8 HB-1)BR		

CONTRACT NO. 70695

### DETAIL OF CURB AND GUTTER OUTLET, SPECIAL



SECTION A-A



SECTION B-B

\* INCREASE TO 1" (50 mm) AT LOCATIONS IN THE PLANS WHERE THESE SPECIAL OUTLETS ARE TO BE CONSTRUCTED AS INLETS. ALL INLET LOCATIONS WILL BE CONFIRMED BY THE ENGINEER.

#### GENERAL NOTES

1. CLASS SI CONCRETE SHALL BE USED THROUGHOUT.
2. TIE BARS SHALL BE NO. 6 (NO. 20) AT 24" (600 mm) CENTERS UNLESS OTHERWISE SHOWN. SPECIAL INLETS AND OUTLETS SHALL BE TIED TO THE PAVEMENT IN ACCORDANCE WITH DETAILS FOR LONGITUDINAL CONSTRUCTION JOINT SHOWN ON STANDARD 420001.
3. TIE BARS SHOWN ABOVE WILL NOT BE PAID FOR SEPARATELY BUT SHALL BE CONSIDERED AS INCLUDED IN THE UNIT PRICE (EACH) OF CURB AND GUTTER OUTLET, SPECIAL.
4. WHEN SPECIAL OUTLET IS CONSTRUCTED ADJACENT TO FLEXIBLE PAVEMENT, THE TIE BARS SHALL BE OMITTED AND ALL CONSTRUCTION JOINTS SHALL BE PROVIDED WITH A DOWEL BAR CONFORMING TO ARTICLE 1006.11(b).
5. THIS WORK WILL BE PAID FOR AT THE CONTRACT UNIT PRICE PER EACH FOR CURB AND GUTTER OUTLET, SPECIAL WHICH PRICE SHALL INCLUDE ALL LABOR AND MATERIAL AS SPECIFIED AND NO ADDITIONAL COMPENSATION WILL BE ALLOWED.

	B-6.12 (B-15.30)	B-9.12 (B-22.30)	B-6.18 (B-15.45)	B-9.18 (B-22.45)	B-6.24 (B-15.60)	B-9.24 (B-22.60)
A	12" (300)	12" (300)	18" (450)	18" (450)	24" (600)	24" (600)
B	6" (150)	6" (150)	9" (225)	9" (225)	6" (150)	9" (225)
X	9" (225)	10" (250)	9" (225)	10" (250)	9" (225)	10" (250)

Note: All dimensions are in INCHES (millimeters) unless otherwise shown.

DATE	REVISIONS	NAME	ILLINOIS DEPARTMENT OF TRANSPORTATION
			<h2>CURB AND GUTTER OUTLET SPECIAL</h2>

PLOT DATE = 12/19/2007  
 FILE NAME = c:\projects\4501099\structure 010-0097\detail2007.dgn  
 PLOT SCALE = 42.3525 / IN.  
 USER NAME = collierb