

STATE OF ILLINOIS
DEPARTMENT OF TRANSPORTATION
DIVISION OF HIGHWAYS

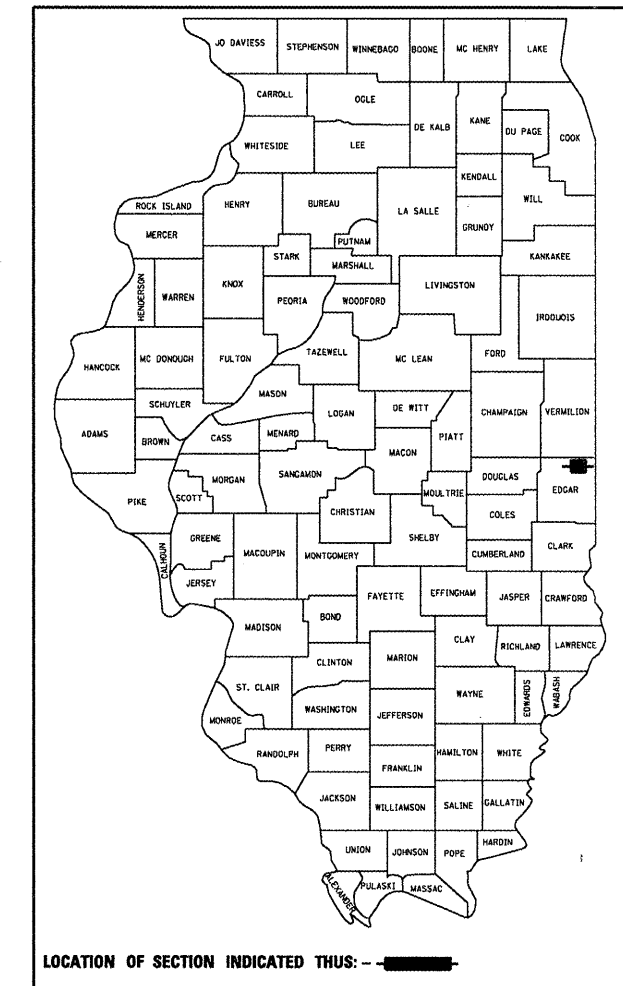
**PROPOSED
HIGHWAY PLANS**

F.A.P. ROUTE 323 (US 36)
SECTION 2008 BEAM BRACING(S.N. 023-0025)
EDGAR COUNTY
BEAM BRACING OVER SALT FORK CREEK
3.0 MILES WEST OF INDIANA STATE LINE
C-95-010-08

F.A.P. RTE.	SECTION	COUNTY	TOTAL SHEETS	SHEET NO.
323		EDGAR	5	1
FED. ROAD DIST. NO.	ILLINOIS	CONTRACT NO. 70723		

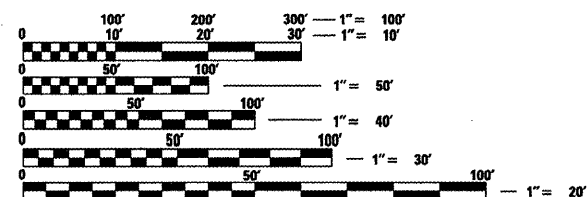
• 2008 BEAM BRACING(S.N. 023-0025)

D-95-010-08



FOR INDEX OF SHEETS, SEE SHEET NO. 2
FOR SUMMARY OF QUANTITIES, SEE SHEET NO. 3

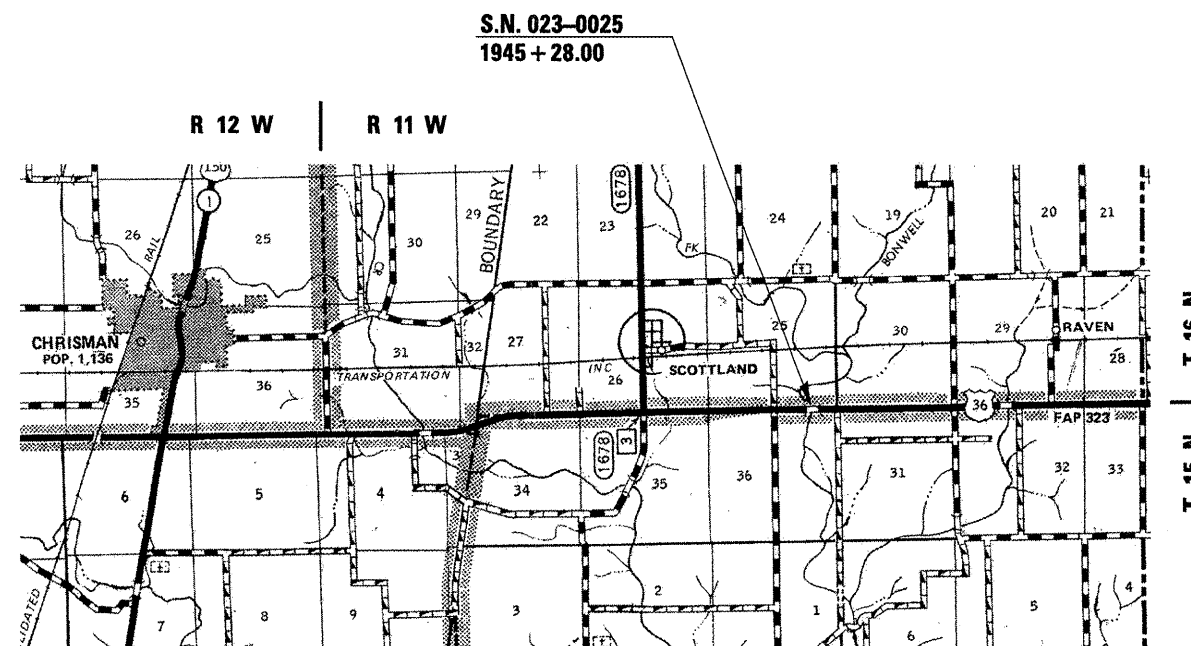
ADT: 1,650 (2007)
DESIGN DESIGNATION
N/A



FULL SIZE PLANS HAVE BEEN PREPARED USING STANDARD ENGINEERING SCALES. REDUCED SIZED PLANS WILL NOT CONFORM TO STANDARD SCALES. IN MAKING MEASUREMENTS ON REDUCED PLANS, THE ABOVE SCALES MAY BE USED.

J.U.L.I.E.
JOINT UTILITY LOCATION INFORMATION FOR EXCAVATION
1-800-892-0123
OR 811

PROJECT ENGINEER: **NANCY FASIG** 217-465-4181
SQUAD LEADER: **CORY SHEEHY** 217-465-4181
DESIGNER: **RYAN CARROLL** 217-465-4181
CONTRACT NO. 70723



TOTAL LENGTH OF SECTION & PROJECT = 130.1 FEET = 0.025 MILES
NET LENGTH OF SECTION & PROJECT = 130.1 FEET = 0.025 MILES

STATE OF ILLINOIS
DEPARTMENT OF TRANSPORTATION
DIVISION OF HIGHWAYS

SUBMITTED 3/6/2008
Joseph L. Crowe
DEPUTY DIRECTOR OF HIGHWAYS, REGION 3 ENGINEER

May 9, 2008
Eric E. Hamm
Interim ENGINEER OF DESIGN AND ENVIRONMENT

May 9, 2008
Christine M. Reed
DIRECTOR OF HIGHWAYS, CHIEF ENGINEER

**PRINTED BY THE AUTHORITY
OF THE STATE OF ILLINOIS**

STATE OF ILLINOIS
DEPARTMENT OF TRANSPORTATION

ROUTE NO.	SECTION	COUNTY	TOTAL SHEETS	SHEET NO.	SHEET NO. 1 2 SHEETS
FAP 323		EDGAR	5	4	
FED. ROAD DIST. NO. 1	ILLINOIS	FED. AID PROJECT	Contract Number: 70723		

GENERAL NOTES

All structural steel shall conform to AASHTO Classification M-270 Gr. 36, unless otherwise noted.

Plan dimensions and details relative to existing plans are subject to routine variations. The Contractor shall field verify existing dimensions and details affecting new construction and make necessary approved adjustments prior to construction or ordering of materials. Such variations shall not be cause for additional compensation for a change in scope of the work, however, the Contractor will be paid for the quantity actually furnished based upon the unit price bid for the work.

See Section 584 of the Standard Specifications for Epoxy Grouting of Threaded Rods.

The cost of epoxy grouting threaded rods shall be included with Furnishing and Erecting Structural Steel.

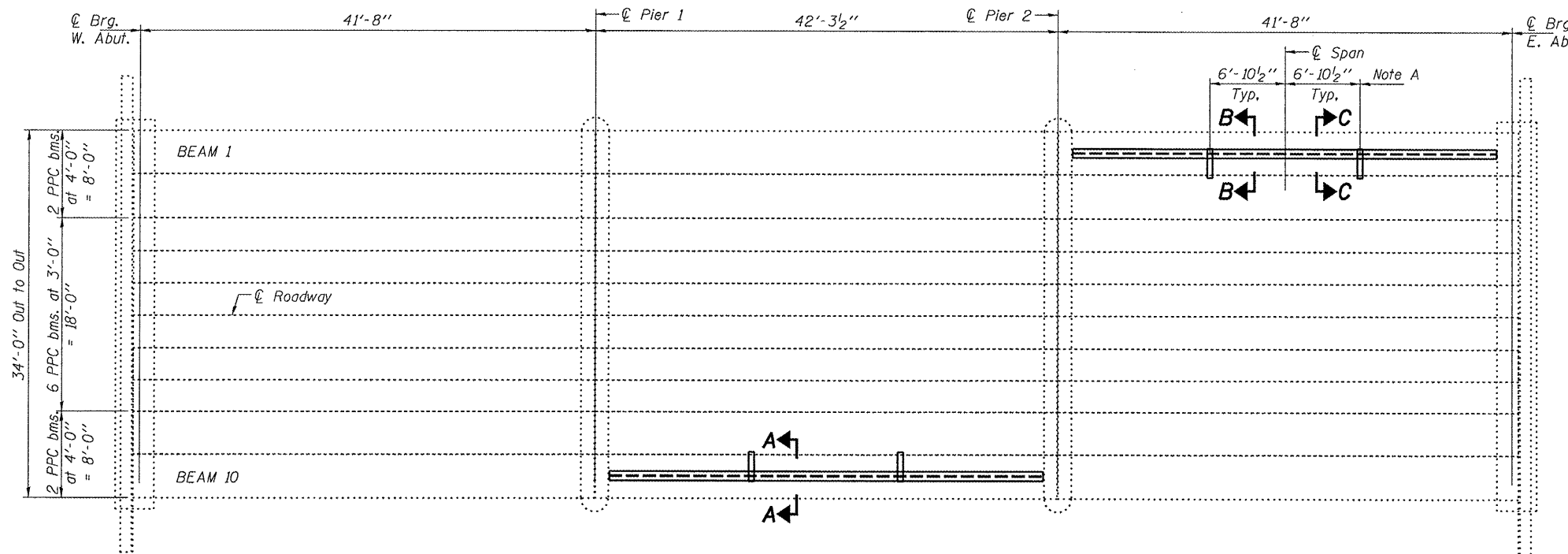
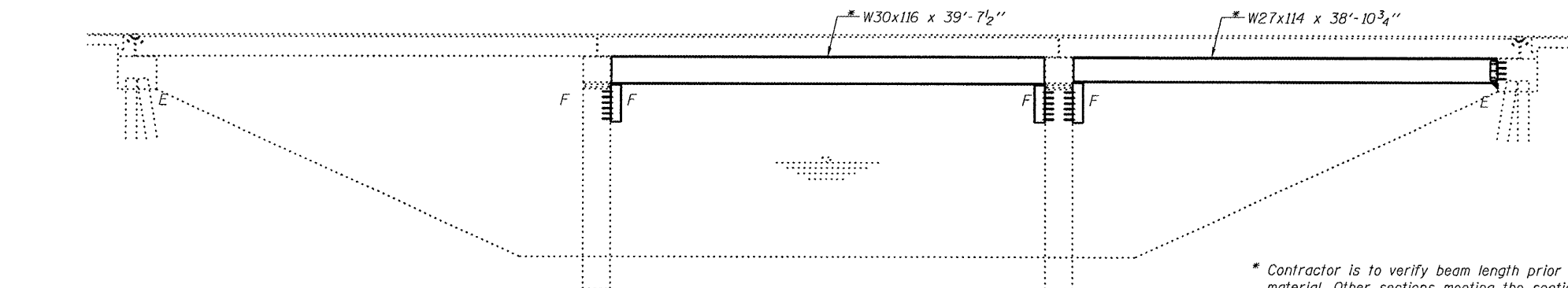
The Contractor has the option of using used steel. See special provisions.

The contractor is advised that the existing PPC Deck Beams are in a deteriorated condition with reduced load carrying capacity. It is the contractor's responsibility to account for the condition of the beams when developing construction procedures.

If the contractor's procedure for placement of beams involves placement of cranes or other heavy equipment on the bridge, a detailed procedure shall be submitted to the Engineer for approval. The procedure shall include calculations, prepared and sealed by an Illinois Licensed Structural Engineer, verifying that the equipment and procedure used will not overstress the existing beams. To distribute load to multiple beams and protect the existing surface, in all cases a double layer mat of heavy timbers shall be used at all times under crane tracks or wheels and any outriggers in the down position. If necessary, shims shall be used under the crane mat to ensure uniform contact with the underlying beams.

* Contractor is to verify beam length prior to ordering material. Other sections meeting the section modulus requirements shown may be allowed subject to approval by the Bureau of Bridges and Structures, however, no additional payment will be allowed if the contractor chooses a heavier steel section than the one specified in the plans. Maximum girder depth = 33", Min. Sx Span 2 = 329 in³ Min. Sx Span 3 = 299 in³.

ELEVATION

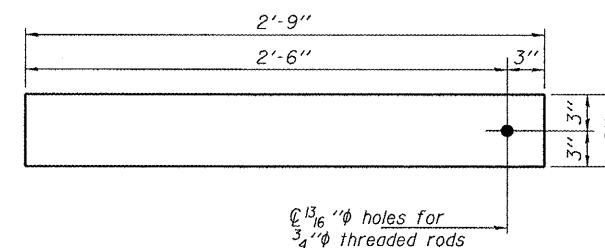


PLAN

See sheet 2 of 2 for Sections.

Note A:

⊕ Transverse tie plates. Place additional shims at midpoints between tie plates. Securely weld shims to top flange of support beam. Minimum shim size is 6" x flange width.



TRANSVERSE TIE P'S

⊕ A 1/2" x 2'-9" x 6" (4 Req'd)

TOTAL BILL OF MATERIAL

ITEM	UNIT	QUANTITY
Furnishing and Erecting Structural Steel	Pound	10170

PLAN AND ELEVATION
FAP 323 OVER SALT FORK CREEK
EDGAR COUNTY
SN 023-0025

DESIGNED	V. H. Velazquez
CHECKED	[Signature]
DRAWN	baliva
CHECKED	[Signature]

APRIL 22, 2008
EXAMINED [Signature]
PASSED [Signature]



Expires: November 30, 2008

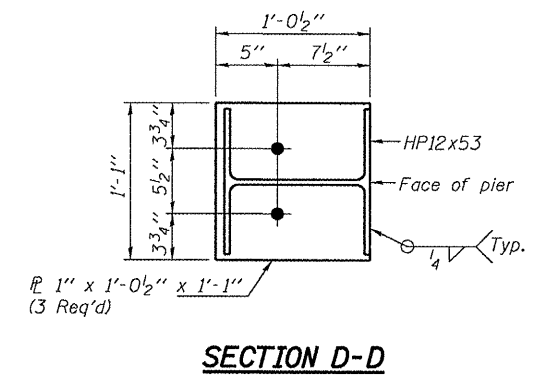
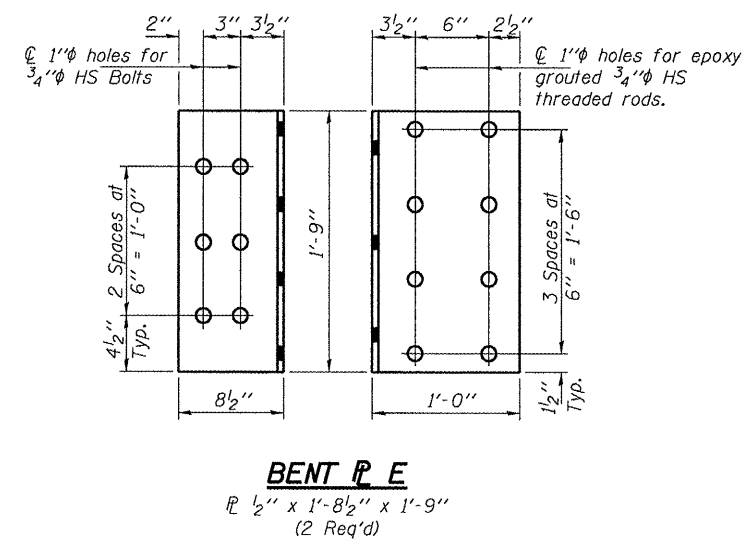
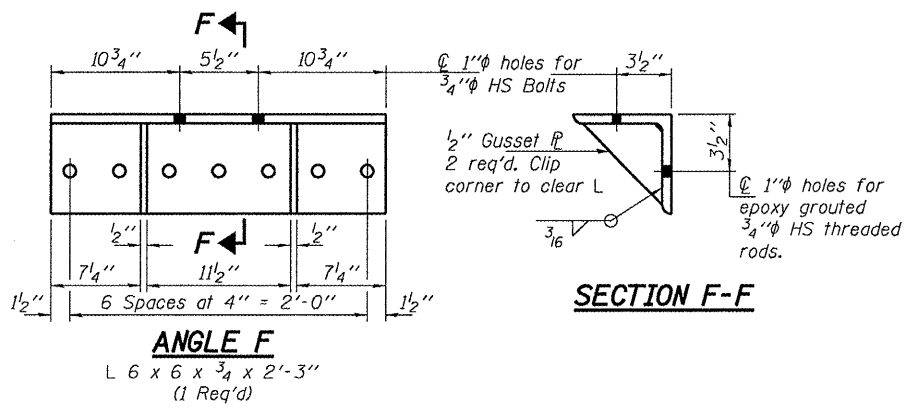
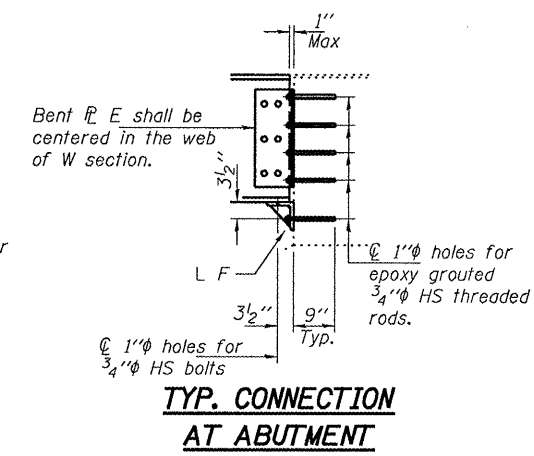
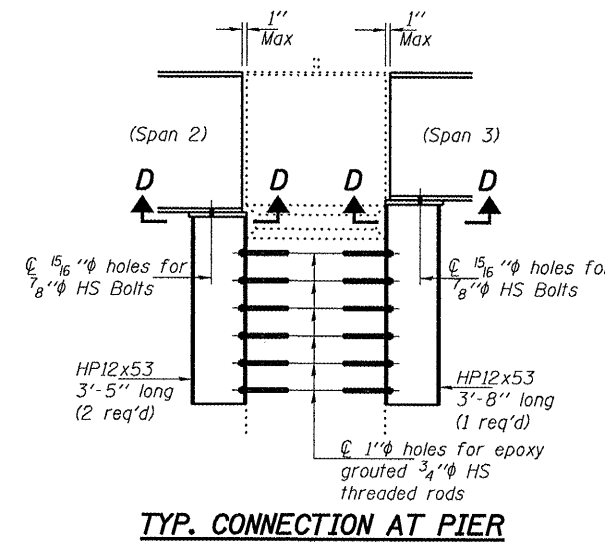
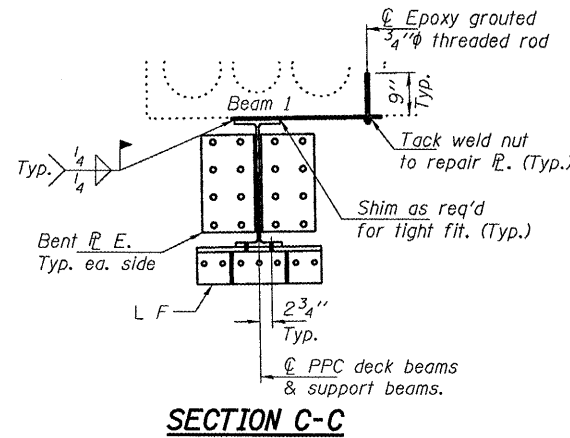
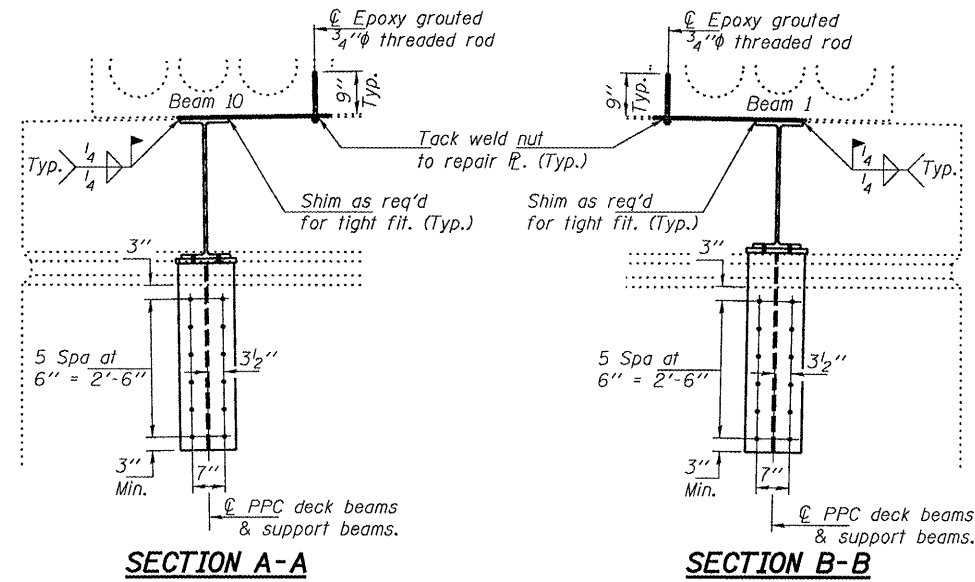
STATE OF ILLINOIS
DEPARTMENT OF TRANSPORTATION

ROUTE NO.	SECTION	COUNTY	TOTAL SHEETS	SHEET NO.
FAP 323		EDGAR	5	5
FED. ROAD DIST. NO. 7	ILLINOIS	FED. AID PROJECT-		

SHEET NO. 2

2 SHEETS

Contract Number: 70723



DESIGNED	VHV	APRIL 22, 2008
CHECKED	DAB	EXAMINED <i>Carl Perry</i>
DRAWN	balva	PASSED <i>Ralph E. Anderson</i>
CHECKED	VHV DAB	

REPAIR DETAILS
FAP 323 OVER SALT FORK CREEK
EDGAR COUNTY
SN 023-0025