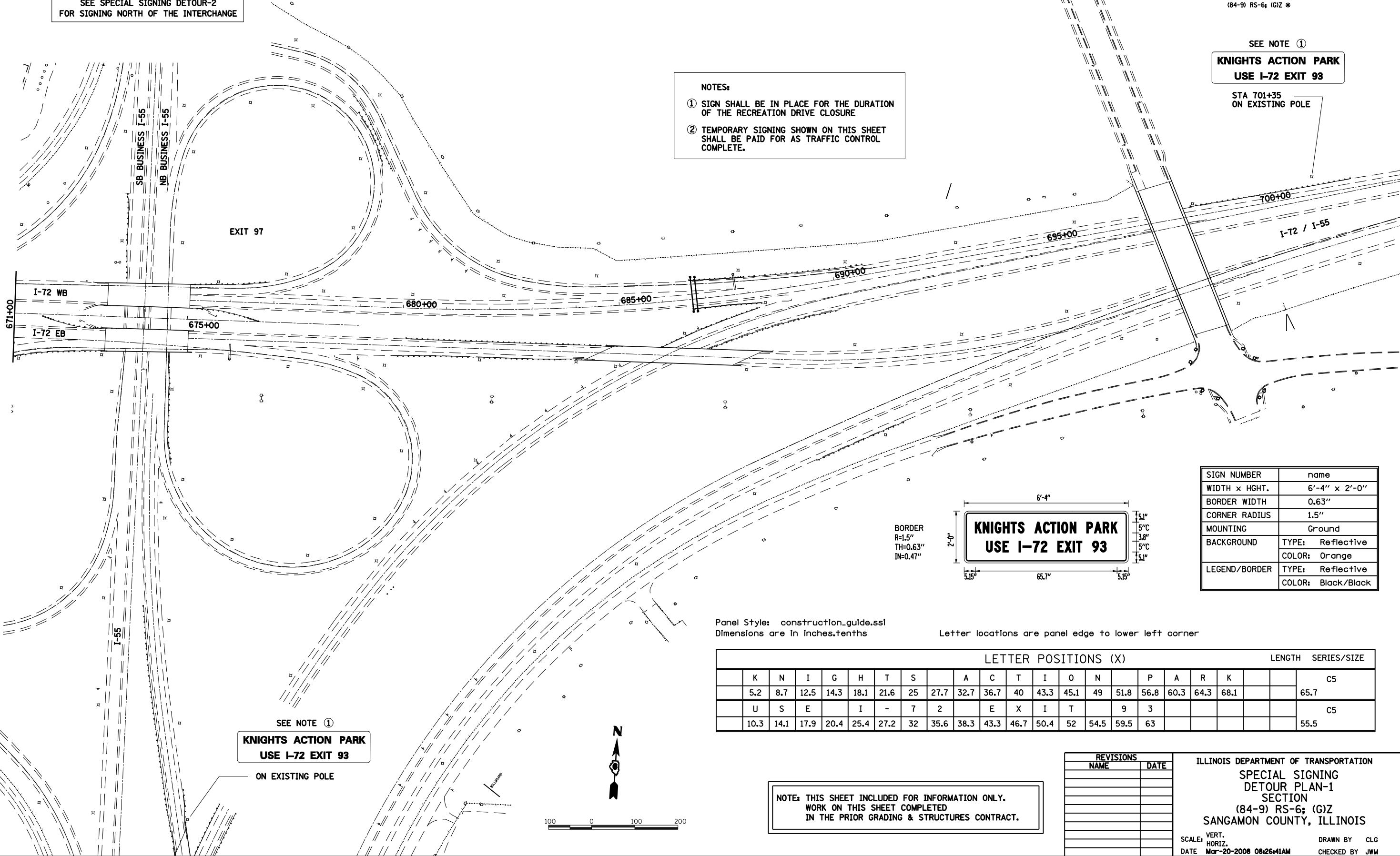


FAU ROUTE	SECTION	COUNTY	TOTAL SHEETS	SHEET NO.
8071	*	SANGAMON	425	120
STA.		TO STA.		
FED. ROAD DIST. NO.	ILLINOIS	FED. AID PROJECT		
(84-9) RS-6; (G)Z *				

SEE SPECIAL SIGNING DETOUR-2 FOR SIGNING NORTH OF THE INTERCHANGE

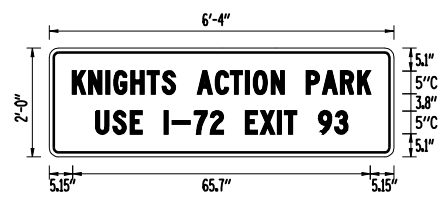


NOTES:

- ① SIGN SHALL BE IN PLACE FOR THE DURATION OF THE RECREATION DRIVE CLOSURE
- ② TEMPORARY SIGNING SHOWN ON THIS SHEET SHALL BE PAID FOR AS TRAFFIC CONTROL COMPLETE.

SEE NOTE ①
**KNIGHTS ACTION PARK
 USE I-72 EXIT 93**

STA 701+35
 ON EXISTING POLE



SIGN NUMBER	name
WIDTH x HGHT.	6'-4" x 2'-0"
BORDER WIDTH	0.63"
CORNER RADIUS	1.5"
MOUNTING	Ground
BACKGROUND	TYPE: Reflective COLOR: Orange
LEGEND/BORDER	TYPE: Reflective COLOR: Black/Black

BORDER
 R=1.5"
 TH=0.63"
 IN=0.47"

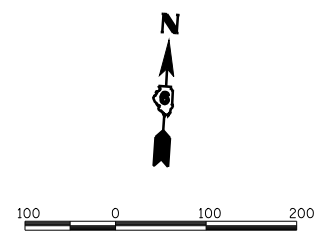
Panel Style: construction_guide.ssl
 Dimensions are in inches tenths

Letter locations are panel edge to lower left corner

LETTER POSITIONS (X)																LENGTH	SERIES/SIZE		
K	N	I	G	H	T	S	A	C	T	I	O	N	P	A	R	K		C5	
5.2	8.7	12.5	14.3	18.1	21.6	25	27.7	32.7	36.7	40	43.3	45.1	49	51.8	56.8	60.3	64.3	68.1	65.7
U	S	E	I	-	7	2	E	X	I	T	9	3							C5
10.3	14.1	17.9	20.4	25.4	27.2	32	35.6	38.3	43.3	46.7	50.4	52	54.5	59.5	63				55.5

SEE NOTE ①
**KNIGHTS ACTION PARK
 USE I-72 EXIT 93**

ON EXISTING POLE



NOTE: THIS SHEET INCLUDED FOR INFORMATION ONLY.
 WORK ON THIS SHEET COMPLETED
 IN THE PRIOR GRADING & STRUCTURES CONTRACT.

REVISIONS	
NAME	DATE

ILLINOIS DEPARTMENT OF TRANSPORTATION
 SPECIAL SIGNING
 DETOUR PLAN-1
 SECTION
 (84-9) RS-6; (G)Z
 SANGAMON COUNTY, ILLINOIS

SCALE: VERT. _____
 HORIZ. _____
 DATE: Mar-20-2008 08:26:41AM

DRAWN BY: CLG
 CHECKED BY: JWM