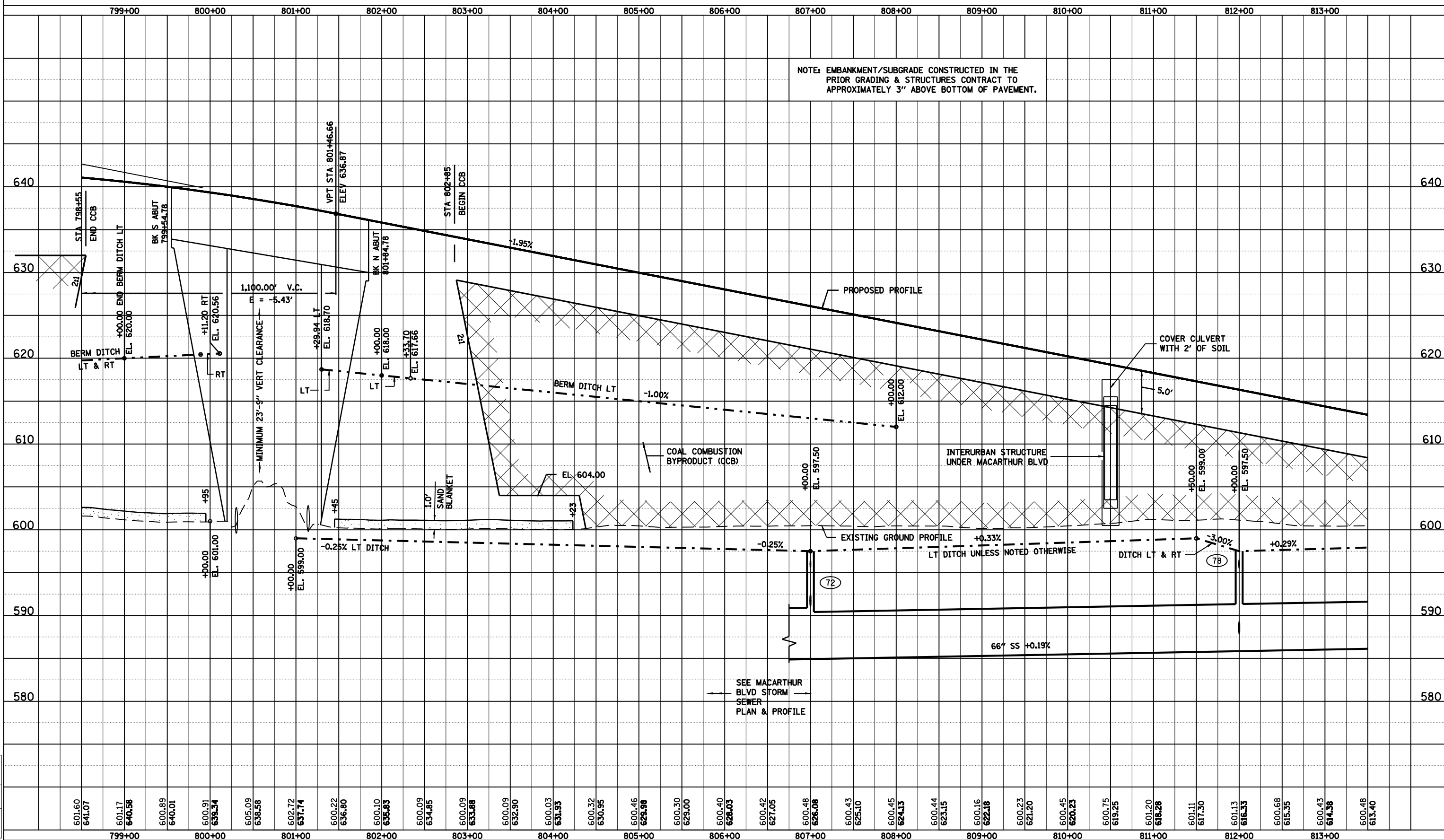


FAU ROUTE	SECTION	COUNTY	TOTAL SHEETS	SHEET NO.
8071	*	SANGAMON	425	126
STA. TO STA.		ILLINOIS FED. AID PROJECT		
FED. ROAD DIST. NO. (84-9) RS-6; IGZ *				

NOTE: EMBANKMENT/SUBGRADE CONSTRUCTED IN THE PRIOR GRADING & STRUCTURES CONTRACT TO APPROXIMATELY 3" ABOVE BOTTOM OF PAVEMENT.



PLAN

SURVEYED	BY	DATE
PLOTTED		
CHECKED		
NO. OF WAY CHECKED		
CADD FILE NAME		



PROFILE

SURVEYED	BY	DATE
PLOTTED		
CHECKED		
NO. OF WAY CHECKED		
STRUCTURE NOTATIONS CHKD		

LAYOUT	CLG	09/17/01
DRAWN	CLG	09/17/01
REVIEWED	JMM	09/17/01

Mar-20-2008 08:27:54AM \$FILES\$