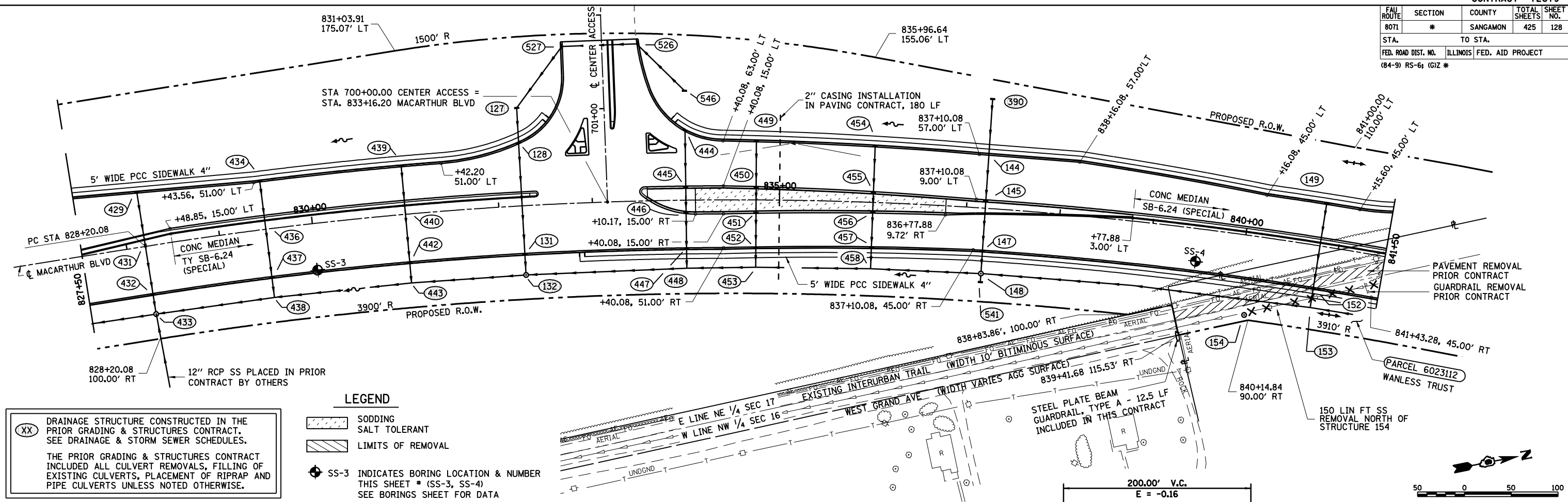


FAU ROUTE	SECTION	COUNTY	TOTAL SHEETS	SHEET NO.
8071	*	SANGAMON	425	128
STA.		TO STA.		
FED. ROAD DIST. NO.		ILLINOIS FED. AID PROJECT		
(84-9) RS-6; IGZ *				

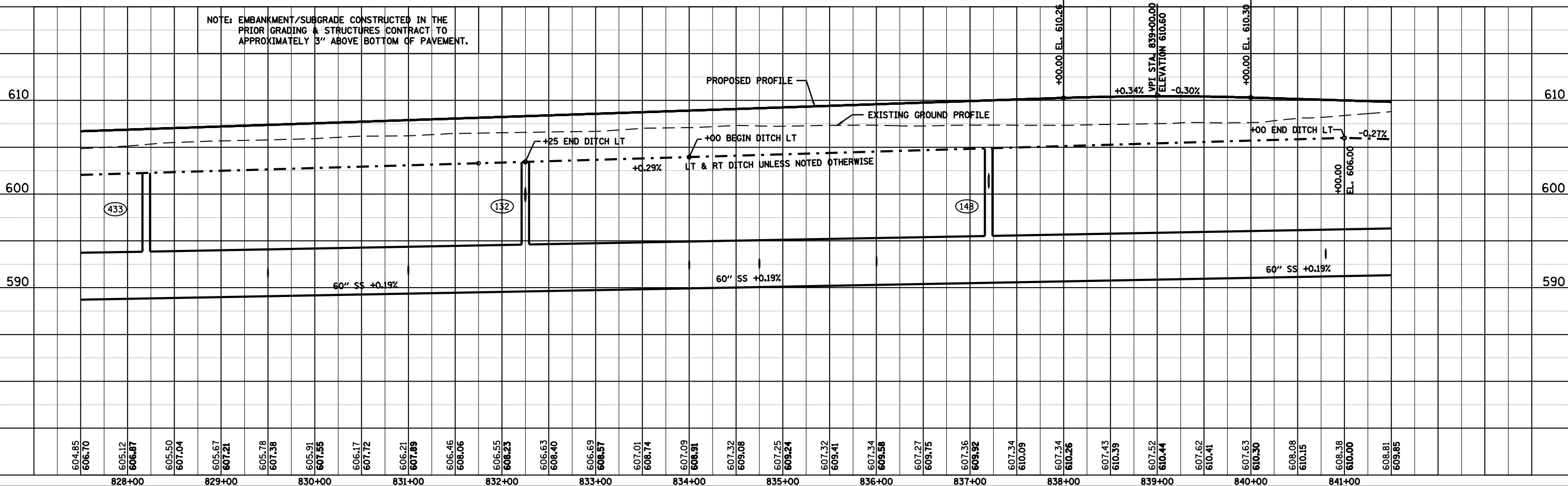


- LEGEND**
- SODDING SALT TOLERANT
 - LIMITS OF REMOVAL
 - SS-3 INDICATES BORING LOCATION & NUMBER THIS SHEET * (SS-3, SS-4) SEE BORINGS SHEET FOR DATA

(XX) DRAINAGE STRUCTURE CONSTRUCTED IN THE PRIOR GRADING & STRUCTURES CONTRACT. SEE DRAINAGE & STORM SEWER SCHEDULES.

THE PRIOR GRADING & STRUCTURES CONTRACT INCLUDED ALL CULVERTS, PLACEMENT OF RIPRAP AND PIPE CULVERTS UNLESS NOTED OTHERWISE.

NOTE: EMBANKMENT/SUBGRADE CONSTRUCTED IN THE PRIOR GRADING & STRUCTURES CONTRACT TO APPROXIMATELY 3" ABOVE BOTTOM OF PAVEMENT.



MACARTHUR BLVD. STA. 827+50 TO STA. 841+50

PLAN

DATE	
BY	
REVIEWED	
PLANNED	
NOTED	
FILED	



PROFILE

DATE	
BY	
REVIEWED	
PLANNED	
NOTED	
FILED	

LAYOUT	CLG	09/17/01
DRAWN	CLG	09/17/01
REVIEWED	JMM	09/17/01