

FAU ROUTE	SECTION	COUNTY	TOTAL SHEETS	SHEET NO.
8071	*	SANGAMON	425	136

STA.	TO STA.
FED. ROAD DIST. NO.	ILLINOIS FED. AID PROJECT

(84-9) RS-6; IGIZ *

LEGEND

[Hatched Area] LIMITS OF REMOVAL

NOTE:
REMOVE EXISTING PIPE UNDERDRAIN AND PIPE UNDERDRAIN (SPECIAL),
ALONG I-72 BETWEEN STA. 576+12.7 TO STA. 583+43.2.
THE COST OF REMOVALS IS INCLUDED IN BITUMINOUS CONCRETE SHOULDER REMOVAL.
INSTALLATION OF PIPE UNDERDRAINS INCLUDED IN PAVING CONTRACT.

I-72 PAVING & SHOULDER WORK ON THIS SHEET INCLUDED IN THE PAVING CONTRACT

SEE RECREATION DRIVE PLAN & PROFILE FOR FENCE LAYOUT

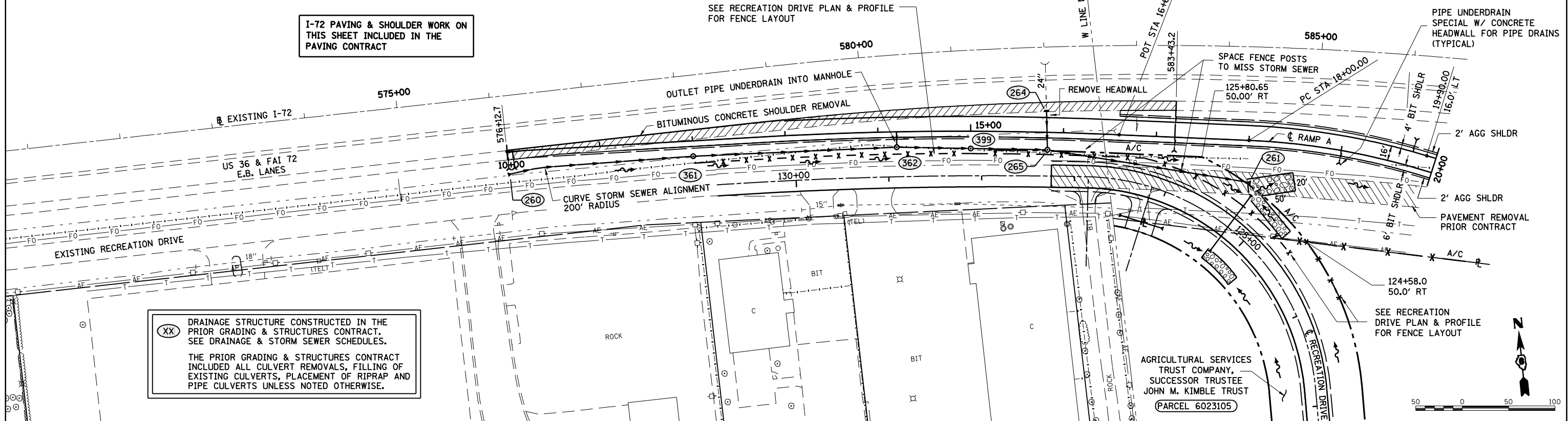
PIPE UNDERDRAIN SPECIAL W/ CONCRETE HEADWALL FOR PIPE DRAINS (TYPICAL)

PLAN	DATE
SURVEYED	
PLOTTED	
CHECKED	
BY	
NO.	

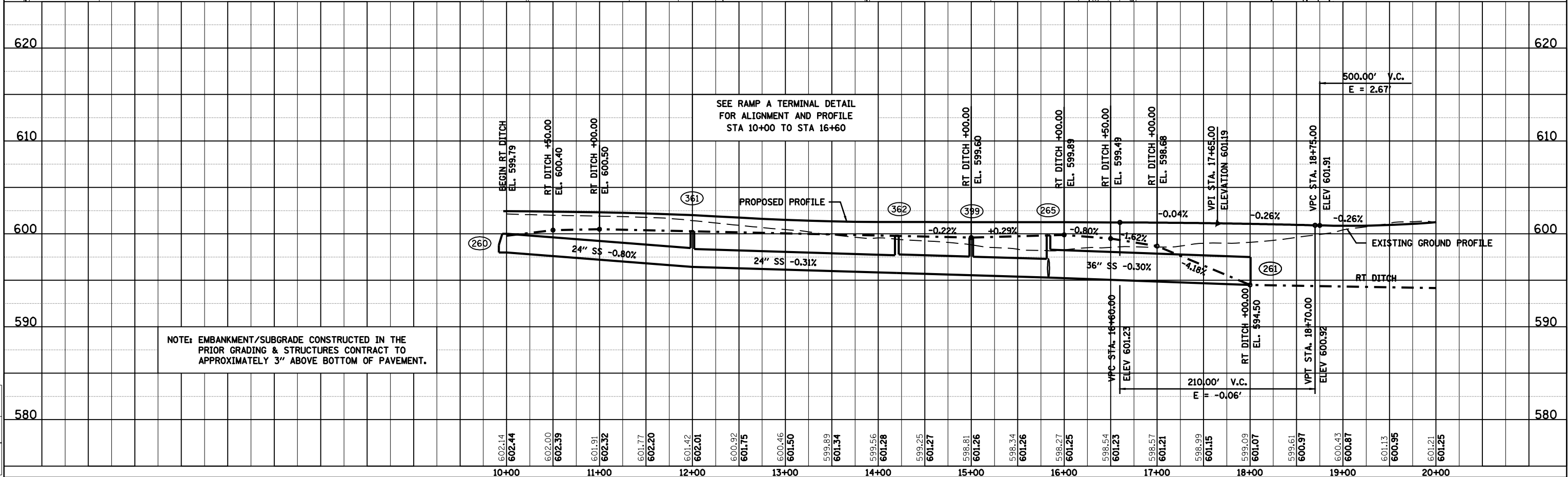


PROFILE	DATE
SURVEYED	
PLOTTED	
CHECKED	
BY	
NO.	

LAYOUT	DATE	
CLG	09/17/01	
CLG	09/17/01	
REVIEWED	JMM	09/17/01



(XX) DRAINAGE STRUCTURE CONSTRUCTED IN THE PRIOR GRADING & STRUCTURES CONTRACT. SEE DRAINAGE & STORM SEWER SCHEDULES.
THE PRIOR GRADING & STRUCTURES CONTRACT INCLUDED ALL CULVERT REMOVALS, FILLING OF EXISTING CULVERTS, PLACEMENT OF RIPRAP AND PIPE CULVERTS UNLESS NOTED OTHERWISE.



NOTE: EMBANKMENT/SUBGRADE CONSTRUCTED IN THE PRIOR GRADING & STRUCTURES CONTRACT TO APPROXIMATELY 3" ABOVE BOTTOM OF PAVEMENT.