

FAU ROUTE	SECTION	COUNTY	TOTAL SHEETS	SHEET NO.
8071	*	SANGAMON	425	140
STA. TO STA.		ILLINOIS FED. AID PROJECT		
FED. ROAD DIST. NO.		ILLINOIS FED. AID PROJECT		
(84-9) RS-6; IGIZ *				

* SEE "ROADWAY DETAILS" SHEET FOR BARRIER CURB TRANSITION AT BRIDGE APPROACH PAVEMENT DETAIL

** PIPE UNDERDRAIN INCLUDED IN PRIOR CONTRACT, SEE WICK DRAIN & UNDERDRAIN DETAILS SHEET CONNECT EAST ABUTMENT UNDERDRAIN LEFT TO STRUCTURE (317)

I-72 PAVING & SHOULDER WORK ON THIS SHEET INCLUDED IN PRIOR GRADING & STRUCTURES CONTRACT UNLESS NOTED OTHERWISE

(XX) DRAINAGE STRUCTURE CONSTRUCTED IN THE PRIOR GRADING & STRUCTURES CONTRACT. SEE DRAINAGE & STORM SEWER SCHEDULES.

THE PRIOR GRADING & STRUCTURES CONTRACT INCLUDED ALL CULVERT REMOVALS, FILLING OF EXISTING CULVERTS, PLACEMENT OF RIPRAP AND PIPE CULVERTS UNLESS NOTED OTHERWISE.

LEGEND

LIMITS OF REMOVAL

NOTE: INSTALLATION OF PIPE UNDERDRAINS AT EDGE OF PAVEMENT INCLUDED IN PAVING CONTRACT.

(A) BRIDGE CONSTRUCTED IN PRIOR CONTRACT. BRIDGE APPROACH PAVEMENT INCLUDED IN PAVING CONTRACT.

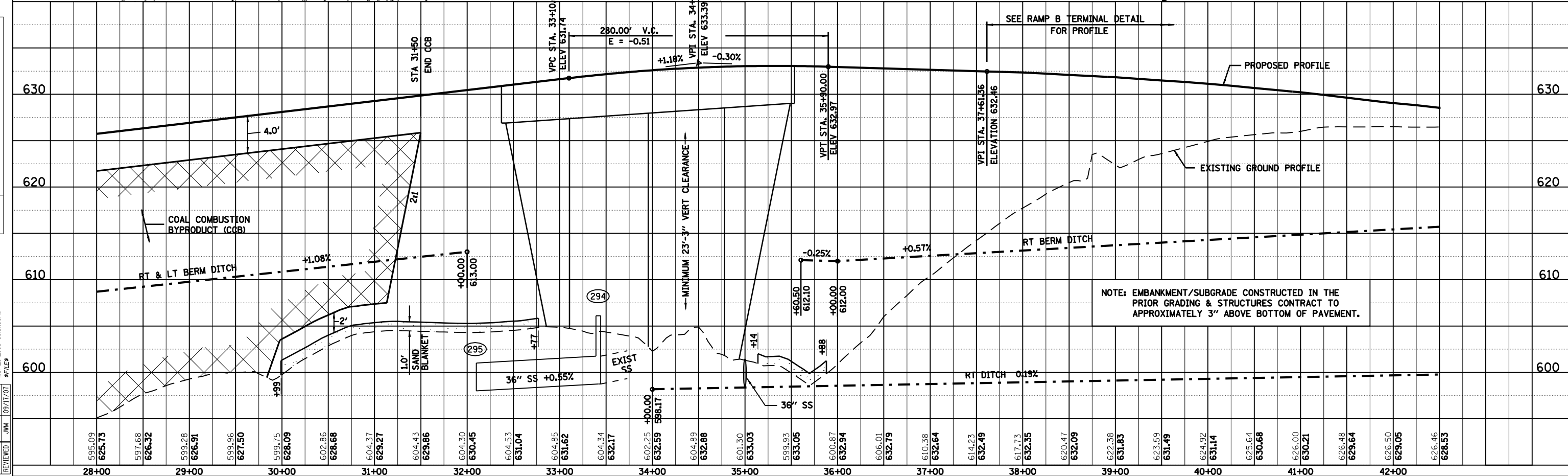
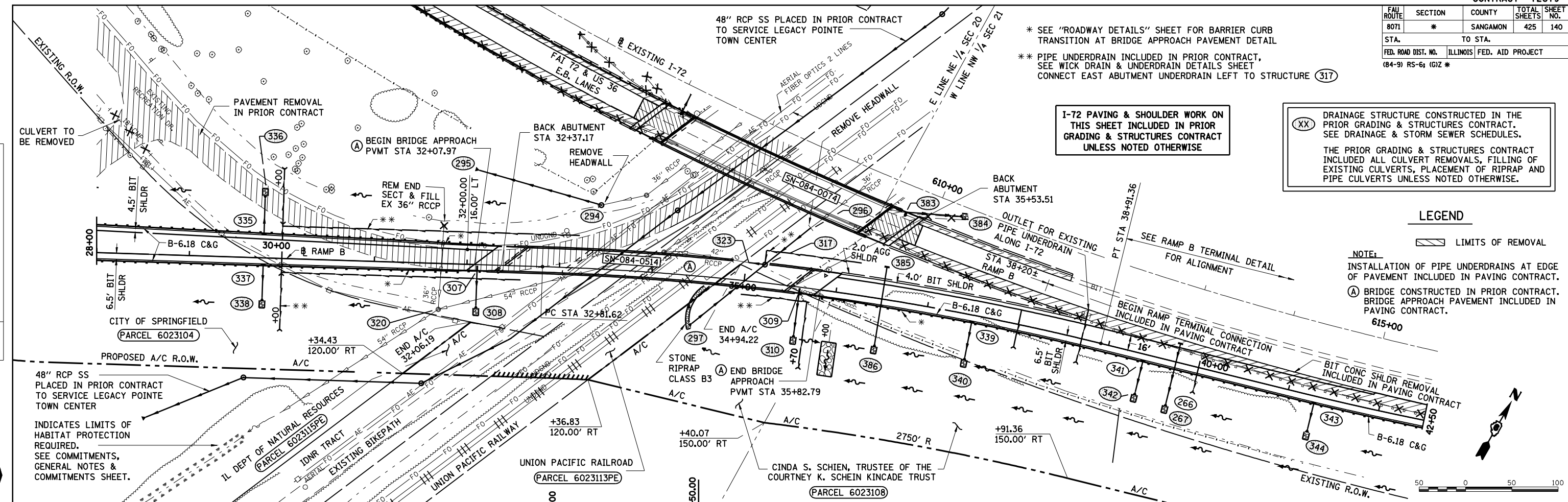
DATE	BY	REVISION

Copyright Hanson Professional Services Inc. 2008

HANSON

DATE	BY	REVISION

DATE	BY	REVISION



NOTE: EMBANKMENT/SUBGRADE CONSTRUCTED IN THE PRIOR GRADING & STRUCTURES CONTRACT TO APPROXIMATELY 3" ABOVE BOTTOM OF PAVEMENT.