

FAU ROUTE	SECTION	COUNTY	TOTAL SHEETS	SHEET NO.
8071	*	SANGAMON	425	144
STA.		TO STA.		
FED. ROAD DIST. NO.		ILLINOIS FED. AID PROJECT		
(84-9) RS-6; IGIZ *				

PLAN

SURVEYED	BY	DATE
PLOTTED		
NOTE BOOK NO.		
RT. OF WAY CHECKED		
CADD FILE NAME		



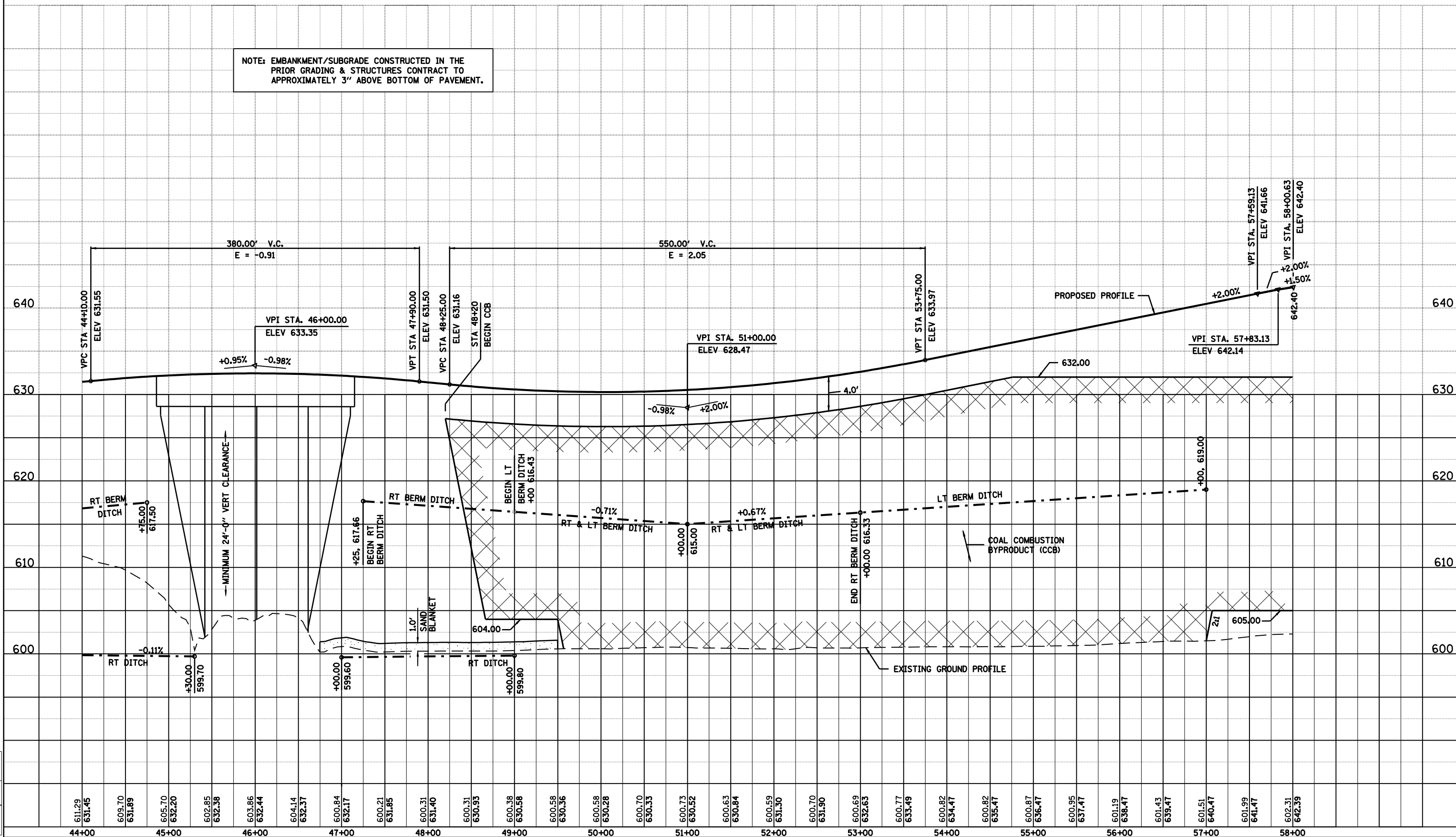
PROFILE

SURVEYED	BY	DATE
PLOTTED		
NOTE BOOK NO.		
STRUCTURE NOTATIONS CHKD		

LAYOUT	CLG	09/17/01
DRAWN	CLG	09/17/01
REVIEWED	JMM	09/17/01

Mar-20-2008 08:32:36AM \$FILES\$

NOTE: EMBANKMENT/SUBGRADE CONSTRUCTED IN THE PRIOR GRADING & STRUCTURES CONTRACT TO APPROXIMATELY 3" ABOVE BOTTOM OF PAVEMENT.



RAMP C STA. 44+00 TO STA. 58+00.63