

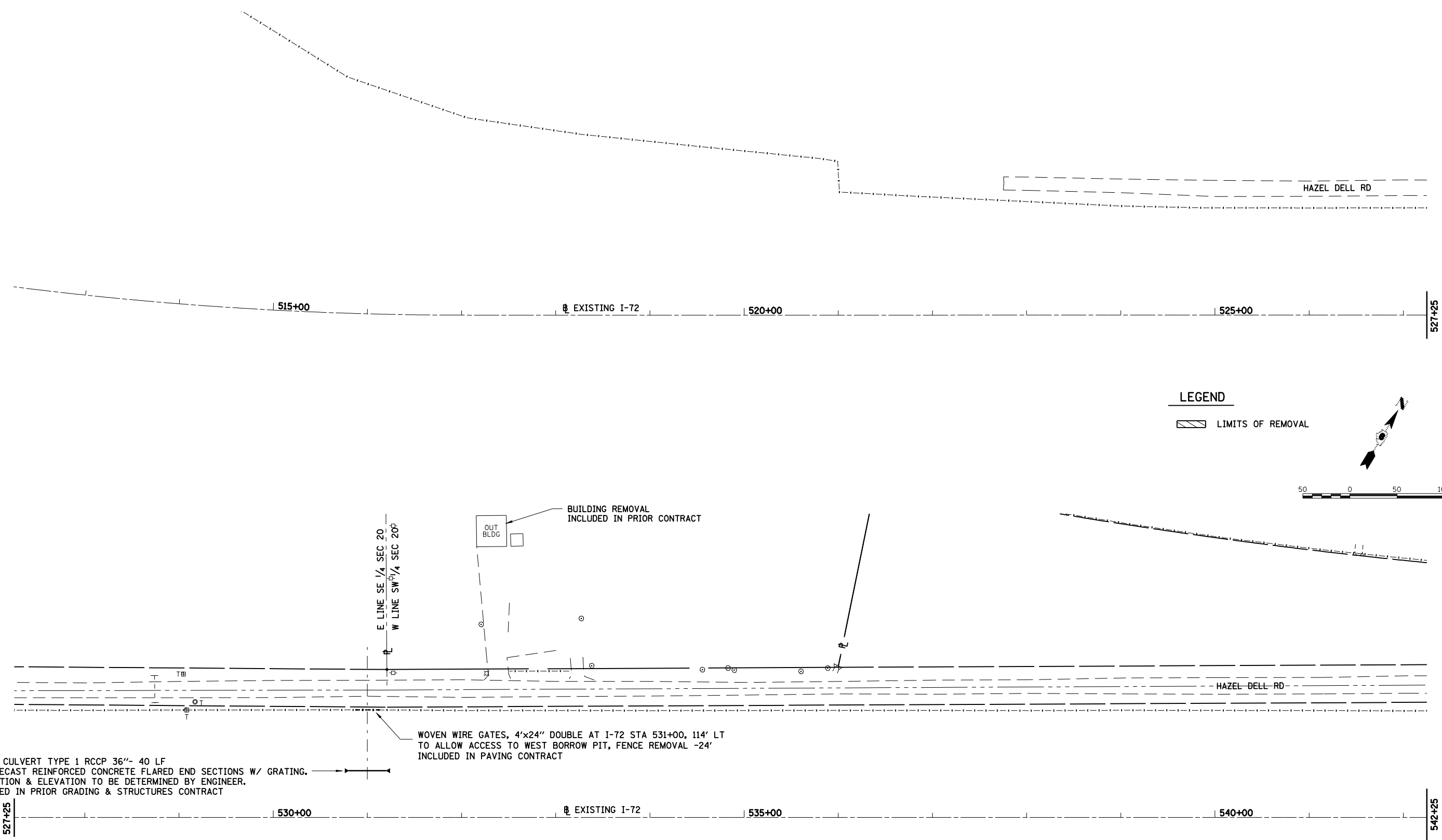
FAU ROUTE	SECTION	COUNTY	TOTAL SHEETS	SHEET NO.
8071	*	SANGAMON	425	157
STA. *		TO STA.		
FED. ROAD DIST. NO.		ILLINOIS FED. AID PROJECT		
(84-9) RS-6; IGZ *				

PLAN	SURVEYED	BY	DATE
NOTE BOOK NO.	PLOTTED		
	CHECKED		
	BY		
	DATE		
	NO. OF WAYS CHECKED		
	CADD FILE NAME		



PROFILE	SURVEYED	BY	DATE
NOTE BOOK NO.	PLOTTED		
	CHECKED		
	BY		
	DATE		
	STRUCTURE NOTATIONS CHKD		

LAYOUT	CLG	09/17/01
DRAWN	CLG	09/17/01
REVIEWED	JMM	09/17/01



PIPE CULVERT TYPE 1 RCCP 36"- 40 LF
 2 PRECAST REINFORCED CONCRETE FLARED END SECTIONS W/ GRATING.
 LOCATION & ELEVATION TO BE DETERMINED BY ENGINEER.
 PLACED IN PRIOR GRADING & STRUCTURES CONTRACT

WOVEN WIRE GATES, 4'x24" DOUBLE AT I-72 STA 531+00, 114' LT
 TO ALLOW ACCESS TO WEST BORROW PIT, FENCE REMOVAL -24'
 INCLUDED IN PAVING CONTRACT

OUT BLDG
 BUILDING REMOVAL
 INCLUDED IN PRIOR CONTRACT

E LINE SE 1/4 SEC 20
 W LINE SW 1/4 SEC 20