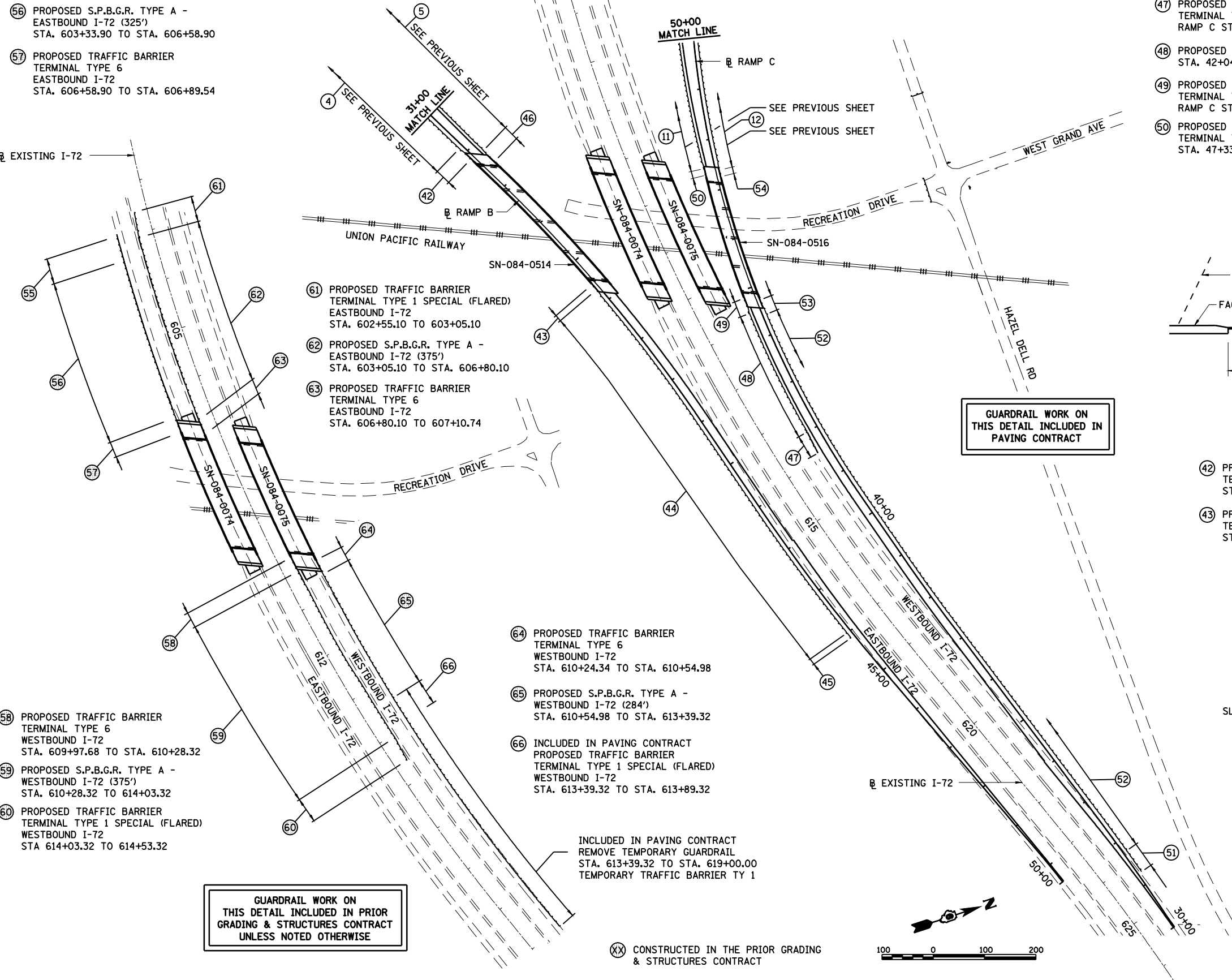


FAU ROUTE	SECTION	COUNTY	TOTAL SHEETS	SHEET NO.
8071	*	SANGAMON	425	165
STA. TO STA.		ILLINOIS FED. AID PROJECT		
(84-9) RS-6; (G)Z *				

- 55 PROPOSED TRAFFIC BARRIER  
TERMINAL TYPE 1 SPECIAL (TANGENT)  
EASTBOUND I-72  
STA. 602+83.90 TO STA. 603+33.90
- 56 PROPOSED S.P.B.G.R. TYPE A -  
EASTBOUND I-72 (325')  
STA. 603+33.90 TO STA. 606+58.90
- 57 PROPOSED TRAFFIC BARRIER  
TERMINAL TYPE 6  
EASTBOUND I-72  
STA. 606+58.90 TO STA. 606+89.54

- 46 PROPOSED TRAFFIC BARRIER  
TERMINAL TYPE 6 - RAMP B  
STA. 32+22.00 TO STA. 32+52.65 LT
- 47 PROPOSED TRAFFIC BARRIER  
TERMINAL TYPE 1, SPECIAL (FLARED)  
RAMP C STA. 41+54.33 TO STA. 42+04.33 LT
- 48 PROPOSED S.P.B.G.R. TYPE A - RAMP C  
STA. 42+04.33 TO STA. 44+54.33 LT
- 49 PROPOSED TRAFFIC BARRIER  
TERMINAL TYPE 6  
RAMP C STA. 44+54.33 TO STA. 44+84.98 LT
- 50 PROPOSED TRAFFIC BARRIER  
TERMINAL TYPE 5 - RAMP C  
STA. 47+33.81 TO STA. 47+47.06 LT
- 51 PROPOSED TRAFFIC BARRIER  
TERMINAL TYPE 1, SPECIAL (TANGENT)  
RAMP C STA. 31+25.00 TO STA. 31+75.00 RT
- 52 PROPOSED S.P.B.G.R. TYPE A - RAMP C  
STA. 31+75.00 TO STA. 44+40.07 RT
- 53 PROPOSED TRAFFIC BARRIER  
TERMINAL TYPE 6 - RAMP C  
STA. 44+40.07 TO STA. 44+70.72 RT
- 54 PROPOSED TRAFFIC BARRIER  
TERMINAL TYPE 5 - RAMP C  
STA. 47+24.10 TO STA. 47+37.35 RT



- 61 PROPOSED TRAFFIC BARRIER  
TERMINAL TYPE 1 SPECIAL (FLARED)  
EASTBOUND I-72  
STA. 602+55.10 TO 603+05.10
- 62 PROPOSED S.P.B.G.R. TYPE A -  
EASTBOUND I-72 (375')  
STA. 603+05.10 TO STA. 606+80.10
- 63 PROPOSED TRAFFIC BARRIER  
TERMINAL TYPE 6  
EASTBOUND I-72  
STA. 606+80.10 TO 607+10.74

- 64 PROPOSED TRAFFIC BARRIER  
TERMINAL TYPE 6  
WESTBOUND I-72  
STA. 610+24.34 TO STA. 610+54.98
- 65 PROPOSED S.P.B.G.R. TYPE A -  
WESTBOUND I-72 (284')  
STA. 610+54.98 TO STA. 613+39.32
- 66 INCLUDED IN PAVING CONTRACT  
PROPOSED TRAFFIC BARRIER  
TERMINAL TYPE 1 SPECIAL (FLARED)  
WESTBOUND I-72  
STA. 613+39.32 TO STA. 613+89.32

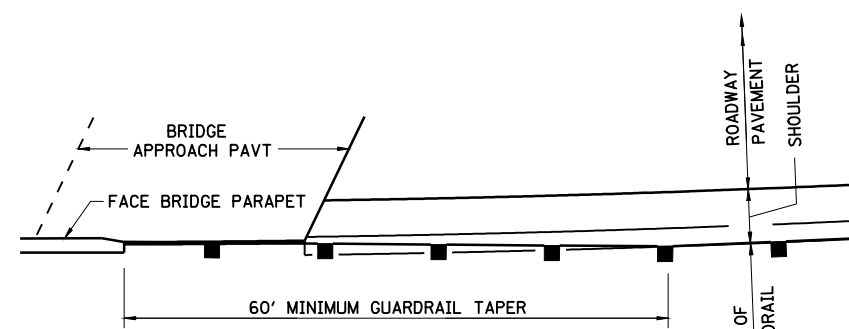
- 58 PROPOSED TRAFFIC BARRIER  
TERMINAL TYPE 6  
WESTBOUND I-72  
STA. 609+97.68 TO STA. 610+28.32
- 59 PROPOSED S.P.B.G.R. TYPE A -  
WESTBOUND I-72 (375')  
STA. 610+28.32 TO 614+03.32
- 60 PROPOSED TRAFFIC BARRIER  
TERMINAL TYPE 1 SPECIAL (FLARED)  
WESTBOUND I-72  
STA 614+03.32 TO 614+53.32

GUARDRAIL WORK ON THIS DETAIL INCLUDED IN PAVING CONTRACT

GUARDRAIL WORK ON THIS DETAIL INCLUDED IN PRIOR GRADING & STRUCTURES CONTRACT UNLESS NOTED OTHERWISE

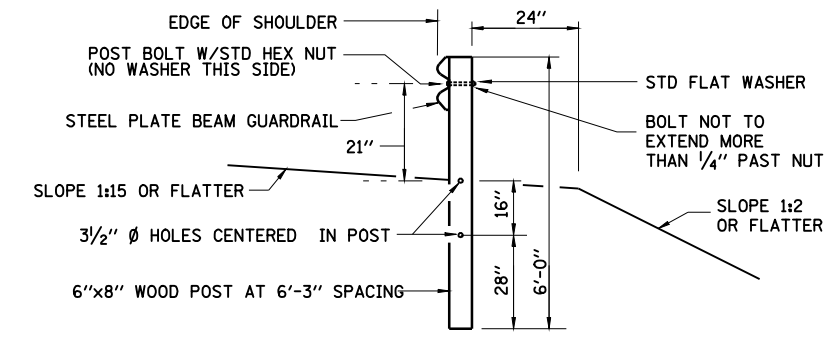
INCLUDED IN PAVING CONTRACT REMOVE TEMPORARY GUARDRAIL STA. 613+39.32 TO STA. 619+00.00 TEMPORARY TRAFFIC BARRIER TY 1

XX CONSTRUCTED IN THE PRIOR GRADING & STRUCTURES CONTRACT



TAPER GUARDRAIL FROM LOCATION SHOWN IN TYPICAL SECTIONS TO BRIDGE PARAPET AS SHOWN  
**GUARDRAIL TAPER AT STRUCTURES**

- 42 PROPOSED TRAFFIC BARRIER  
TERMINAL TYPE 6 - RAMP B  
STA. 31+85.55 TO STA. 32+16.20 RT
- 43 PROPOSED TRAFFIC BARRIER  
TERMINAL TYPE 5 - RAMP B  
STA. 35+57.15 TO STA. 35+70.40 RT
- 44 PROPOSED S.P.B.G.R. TYPE A - RAMP B  
STA. 35+70.40 TO STA. 44+00.00 RT
- 45 PROPOSED TRAFFIC BARRIER  
TERMINAL TYPE 2  
RAMP B STA. 44+00.00 TO STA. 44+12.50 RT
- 46 PROPOSED TRAFFIC BARRIER  
TERMINAL TYPE 6 - RAMP B  
STA. 32+22.00 TO STA. 36+52.65 LT

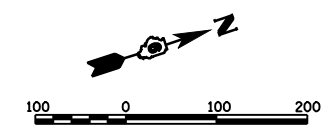


**POSTS AT RADIUS GUARDRAIL**

REVISIONS	
NAME	DATE

ILLINOIS DEPARTMENT OF TRANSPORTATION  
**GUARDRAIL LAYOUT -2**  
FAI-72, MACARTHUR BLVD SECTION  
(84-9) RS-6; (G)Z  
SANGAMON COUNTY, ILLINOIS

SCALE: VERT. HORIZ.  
DATE: Mar-20-2008 08:37:18AM  
DRAWN BY: CLG  
CHECKED BY: JWM



LAYOUT	CLG	09/17/07
DRAWN	CLG	09/17/07
REVIEWED	JWM	09/17/07