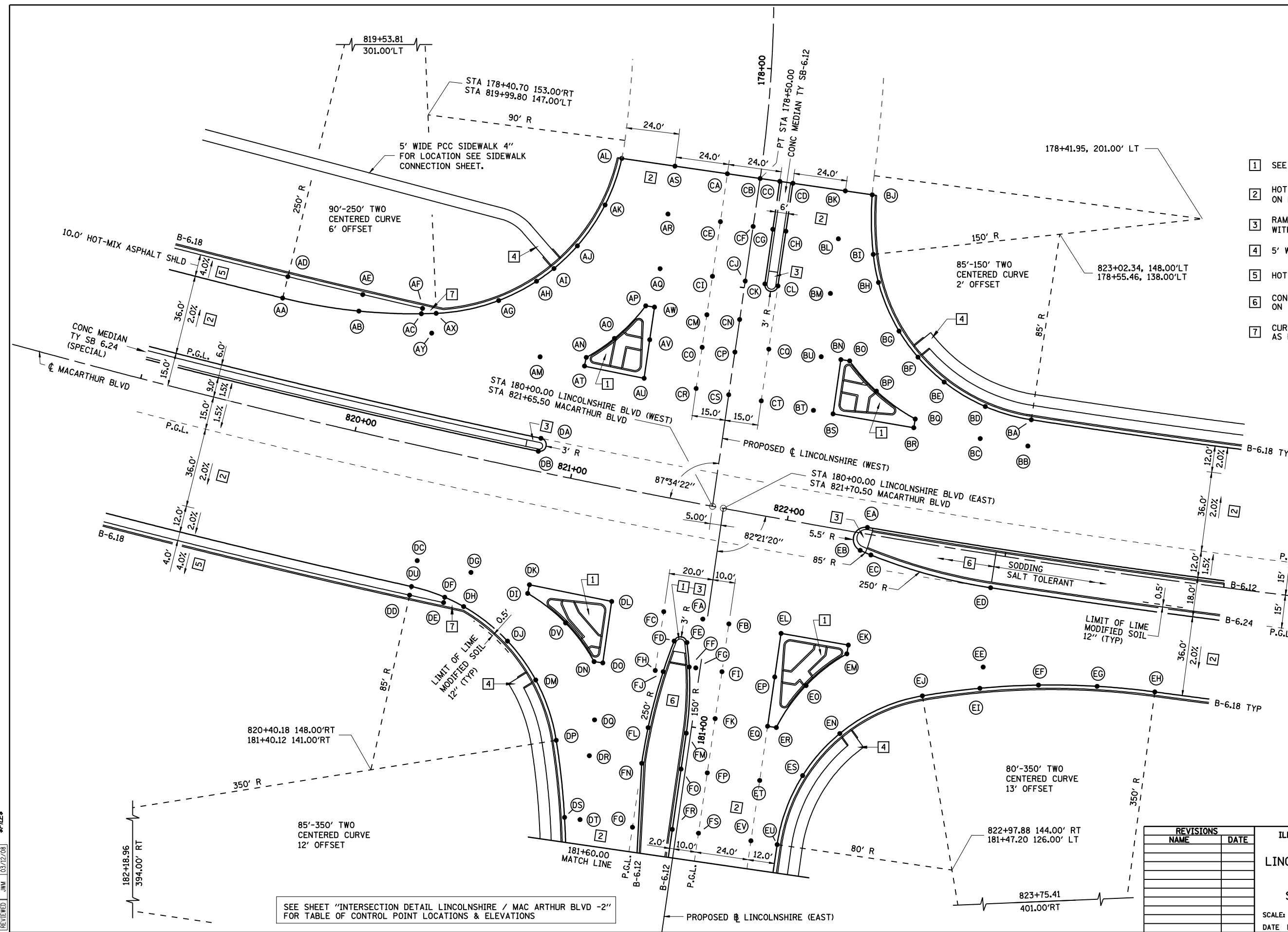
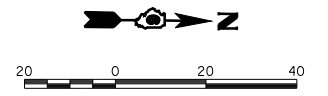


FAU ROUTE	SECTION	COUNTY	TOTAL SHEETS	SHEET NO.
8071	*	SANGAMON	425	181
STA.		TO STA.		
FED. ROAD DIST. NO.		ILLINOIS FED. AID PROJECT		
(84-9) RS-6; (G)Z *				



- 1 SEE ISLAND DETAILS SHEET
- 2 HOT-MIX ASPHALT (FULL DEPTH) 13" ON LIME MODIFIED SOIL 12"
- 3 RAMP MEDIAN NOSES IN ACCORDANCE WITH STD 606301
- 4 5' WIDE PCC SIDEWALK 4"
- 5 HOT-MIX ASPHALT SHOULDERS, 9"
- 6 CONCRETE MEDIAN SURFACE 4" ON SUBBASE GRANULAR MATERIAL, TYPE C, 4"
- 7 CURB AND GUTTER TRANSITION PAID FOR AS B-6.18 CURB AND GUTTER

SEE SHEET "INTERSECTION DETAIL LINCOLNSHIRE / MAC ARTHUR BLVD -2" FOR TABLE OF CONTROL POINT LOCATIONS & ELEVATIONS



REVISIONS	
NAME	DATE

ILLINOIS DEPARTMENT OF TRANSPORTATION
INTERSECTION DETAIL
LINCOLNSHIRE / MACARTHUR BLVD-1
SECTION
(84-9) RS-6; (G)Z
SANGAMON COUNTY, ILLINOIS

SCALE: VERT. _____
 HORIZ. _____
 DATE: Mar-20-2008 09:34:28AM
 DRAWN BY: CLG
 CHECKED BY: JAD

LAYOUT: CLG 09/17/07
 DRAWN: CLG 09/17/07
 REVIEWED: JMM 03/12/08
 Mar-20-2008 09:34:28AM
 \$FILES\$