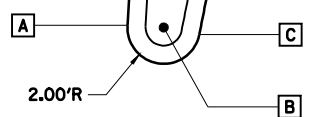


FAU ROUTE	SECTION	COUNTY	TOTAL SHEETS	SHEET NO.
8071	*	SANGAMON	425	193
STA.		TO STA.		
FED. ROAD DIST. NO.		ILLINOIS	FED. AID PROJECT	
(84-9) RS-6; (G)Z *				

**LINDBERGH MEDIAN**

- A 600+84.57, 6.00' RT
- B 600+84.57, 8.00' RT
- C 600+84.29, 9.98' RT

6' SOLID RAMP NOSE SEE STD 606301

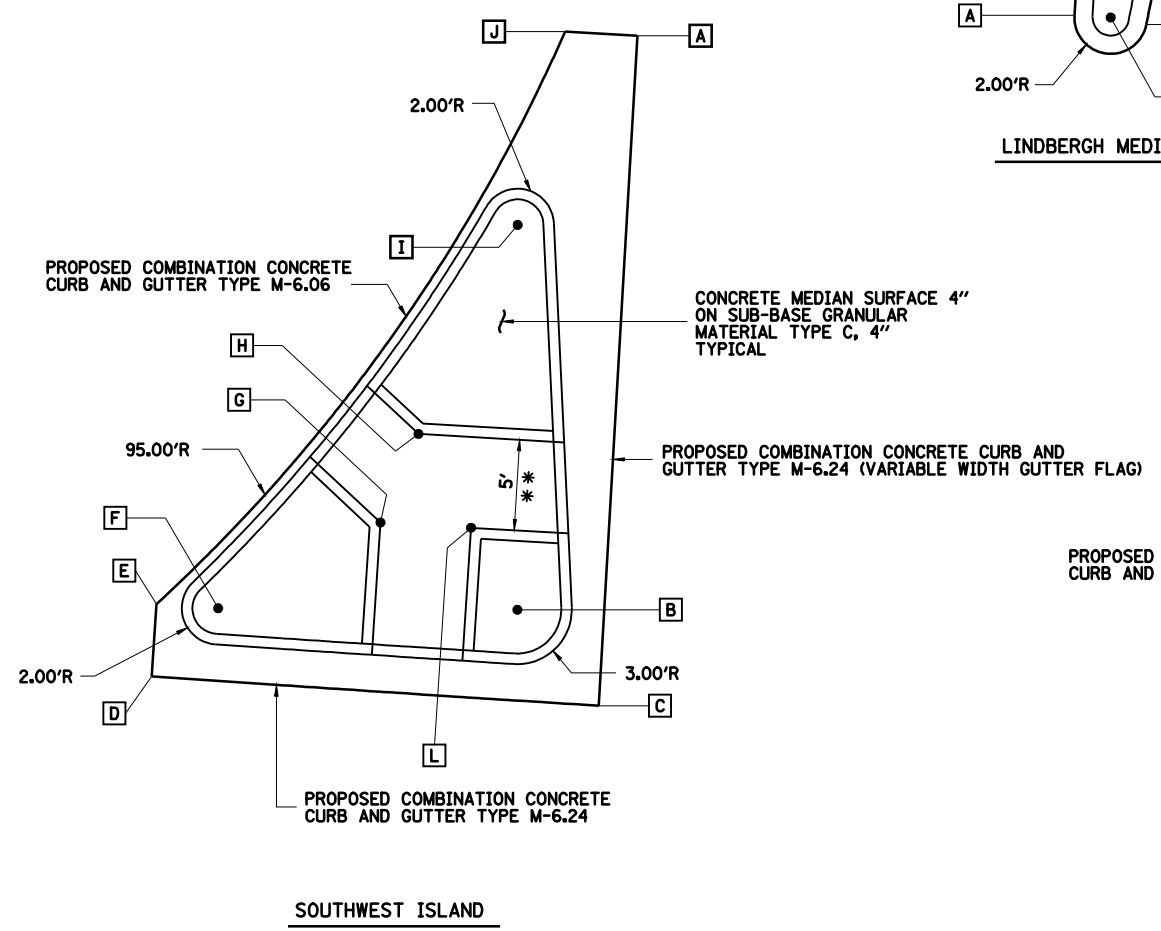


**LINDBERGH MEDIAN**

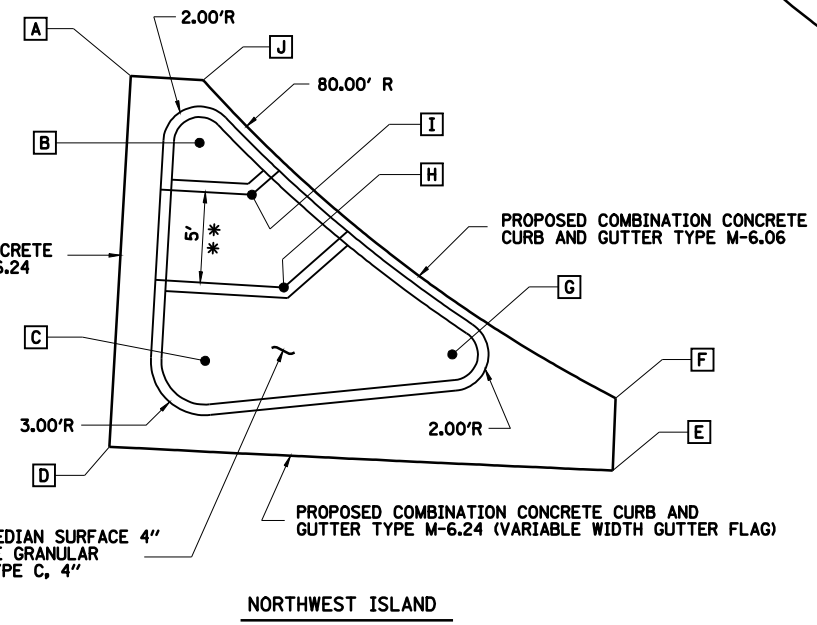
5' WIDE CURB RAMP FOR SIDEWALK STD 424001

**SOUTHWEST ISLAND**

- A 842+74.80, 82.01' LT
- B 842+70.11, 50.00' LT
- C 842+74.97, 45.00' LT
- D 842+50.06, 45.00' LT
- E 842+50.06, 49.00' LT
- F 842+53.47, 49.00' LT
- G 842+62.16, 54.31' LT
- H 842+63.96, 59.33' LT
- I 842+68.75, 71.18' LT
- J 842+70.72, 81.99' LT
- K 842+30.32, 83.48' LT
- L 842+67.23, 54.35' LT



**SOUTHWEST ISLAND**



**NORTHWEST ISLAND**

- A 843+21.65, 65.49' LT
- B 843+25.68, 62.00' LT
- C 843+26.60, 50.00' LT
- D 843+21.50, 45.00' LT
- E 843+49.60, 45.00' LT
- F 843+49.60, 49.00' LT
- G 843+40.37, 51.00' LT
- H 843+30.79, 54.26' LT
- I 843+28.75, 59.28' LT
- J 843+25.71, 65.47' LT
- K 843+52.35, 78.15' LT

\*\* 5' WIDE SIDEWALK WITH SIDE CURBS. SEE CURB RAMPS FOR SIDEWALKS STD 424001



REVISIONS	
NAME	DATE

ILLINOIS DEPARTMENT OF TRANSPORTATION  
 ISLAND DETAILS  
 LINDBERGH / MACARTHUR BLVD SECTION  
 (84-9) RS-6; (G)Z  
 SANGAMON COUNTY, ILLINOIS

SCALE: VERT. HORIZ.  
 DATE: Mar-20-2008 09:35:33AM

DRAWN BY: CLG  
 CHECKED BY: JAD



Mar-20-2008 09:35:33AM  
 \*FILE\*

LAYOUT	CLG	03/17/07
DRAWN	CLG	03/17/07
REVIEWED	JMM	03/17/07