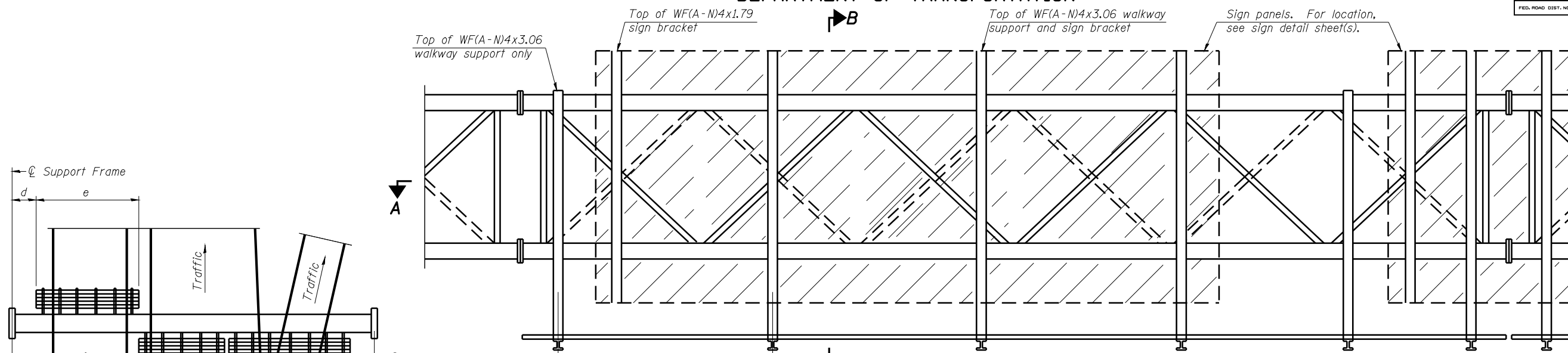


STATE OF ILLINOIS
DEPARTMENT OF TRANSPORTATION

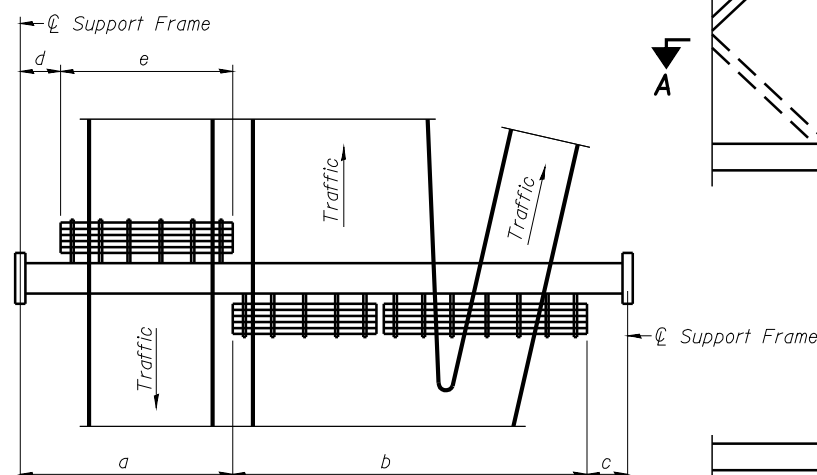
ROUTE NO.	SECTION	COUNTY	TOTAL SHEETS	SHEET NO.
8071	*	SANGAMON	425	246
FED. ROAD DIST. NO. 7		ILLINOIS	FED. AID PROJECT-	

*(84-9) RS-6; (G)Z

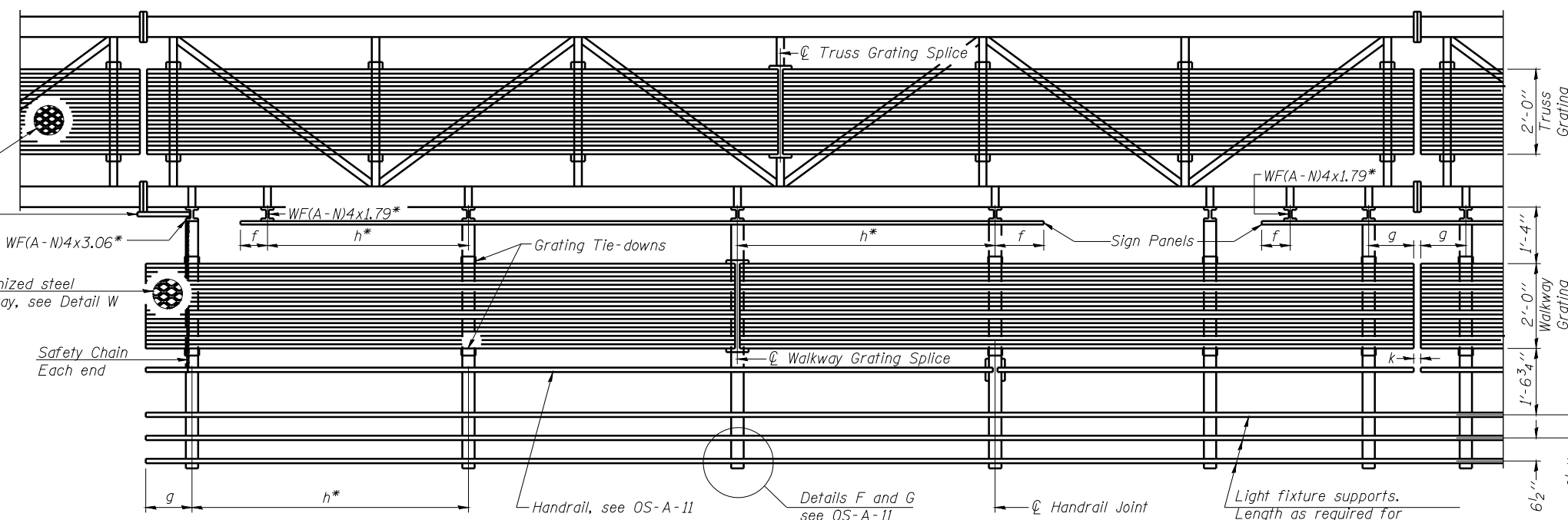


TYPICAL FRONT ELEVATION
With lights and handrail omitted for clarity.
For Section B-B, see Base Sheet OS-A-10.

Truss grating to facilitate inspection shall run full length (center to center of support frames) ±12" on overhead trusses. Cost of truss grating is included in "Overhead Sign Structure".



PLAN WALKWAY AND HANDRAIL SKETCH
(Road plan beneath truss varies)



SECTION A-A

Handrail and walkway shall span a minimum of three brackets between splices and/or gap joints. Place all sign and walkway brackets as close to panel points as practical. Handrail joints, grating, and light support splices placed as needed.

Note: Details shown are considered equal alternatives to the Aluminum Walkway on Base Sheet OS-A-9, and may be substituted by Contractor at no change in contract cost.

BRACKET TABLE

WF(A-N)4x1.79 or WF(A-N)4x3.06 ASTM B308, Alloy 6061-T6		
Sign Width		Number Brackets Required
Greater Than	Less Than or Equal To	
	8'-0"	2
8'-0"	14'-0"	3
14'-0"	20'-0"	4
20'-0"	26'-0"	5
26'-0"	32'-0"	6

Notes:

* Space walkway brackets WF(A-N)4x3.06 and sign brackets WF(A-N)4x1.79 for efficiency and within limits shown:

- f = 12" maximum, 4" minimum (End of sign to ϕ of nearest bracket)
- g = 12" maximum, 4" minimum (End of walkway grating to ϕ of nearest support bracket)
- h = 6'-0" maximum (ϕ to ϕ sign and/or walkway support brackets, WF(A-N)4x1.79 or WF(A-N)4x3.06)
- k = 2" maximum gap between adjacent walkway grating sections and handrail ends

** If walkway bracket at safety chain location is behind sign, add angle to bracket, see Alternate Safety Chain Attachment on Base Sheet OS-A-11.

For Details T and W, Section B-B and Grating Splice Details see Base Sheet OS-A-10.
For handrail details see base sheet OS-A-11.

DESIGNED	-
CHECKED	-
DRAWN	-
CHECKED	-

EXAMINED	20
PASSED	ENGINEER OF BRIDGE DESIGN
	ENGINEER OF BRIDGES AND STRUCTURES

NUMBER	REVISION	DATE

Structure Number	Station	a	b	c	d	e	Walkway Grating and Handrail Lengths
6S084I072L097.6	686+75	21'-3"	44'-9"	14'-0"	-	-	

**OVERHEAD SIGN STRUCTURES
ALTERNATE WALKWAY DETAILS**

SIGNING DETAIL
6S084I072L097.6
FAI-72, MACARTHUR BLVD