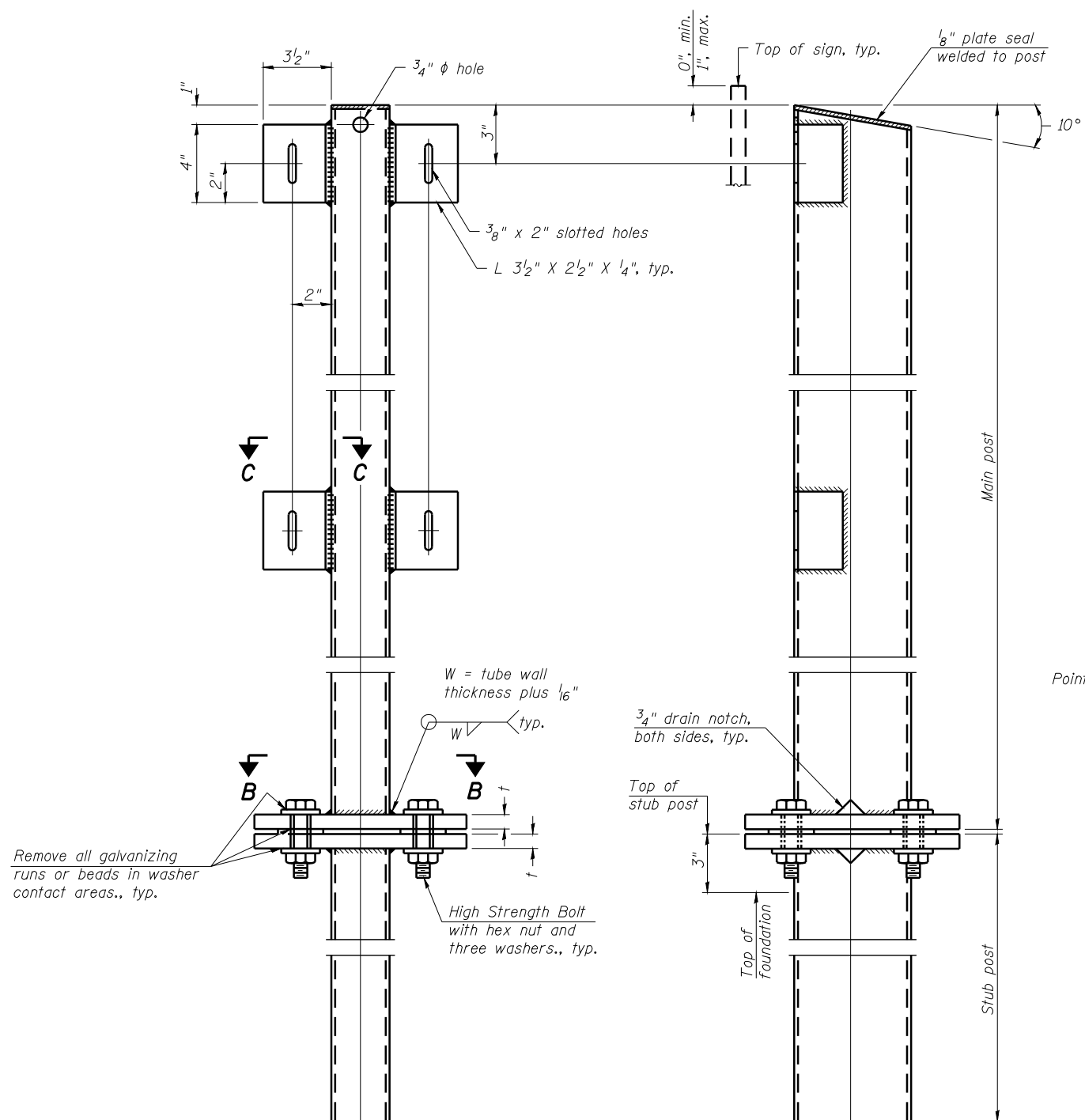


STATE OF ILLINOIS
DEPARTMENT OF TRANSPORTATION

ROUTE NO.	SECTION	COUNTY	TOTAL SHEETS	SHEET NO.
8071	*	SANGAMON	425	254
FED. ROAD DIST. NO. 7		ILLINOIS	FED. AID PROJECT-	

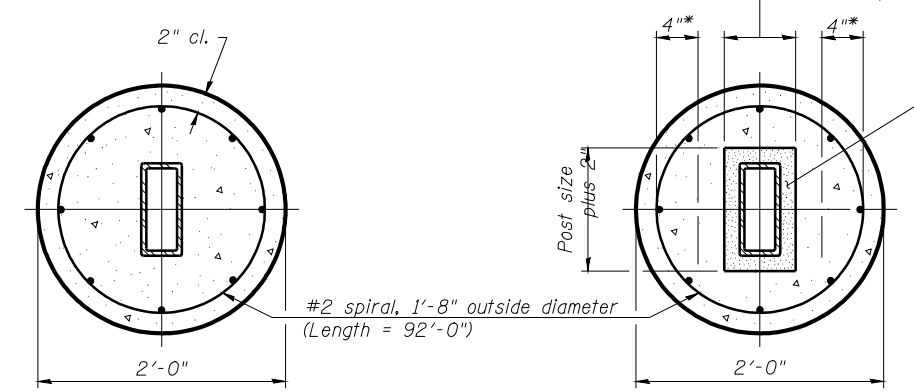
*(84-9) RS-6; (G)Z



FRONT ELEVATION

SIDE ELEVATION

MAIN POST & STUB POST

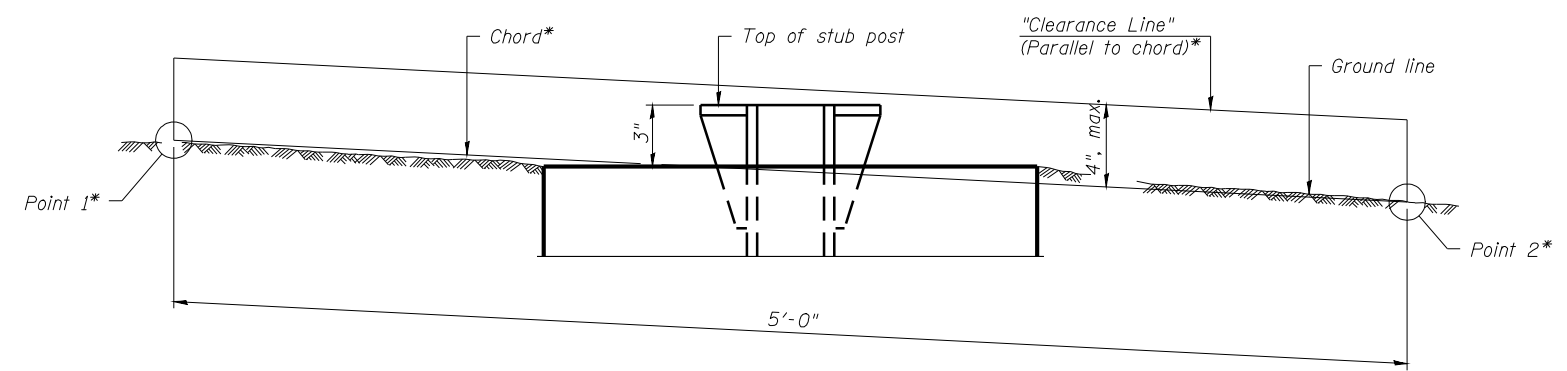


SECTION A-A
(CAST-IN-PLACE)

OR

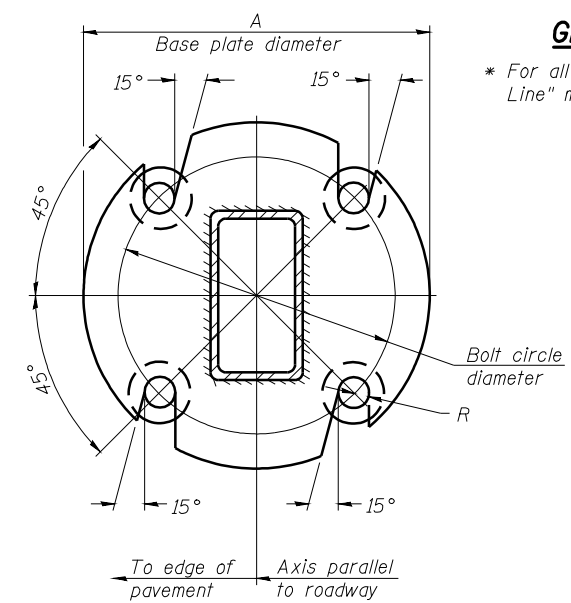
SECTION A-A
(PRECAST)

* Hot dip galvanized lifting loops or inserts may be placed in precast foundation inside the spiral reinforcement but not within 6" of the long axis of the post. Inserts must be adequate for safely lifting a total of 3,000 pounds and must not interfere with installation of the stub post or proper functioning of the slip base.

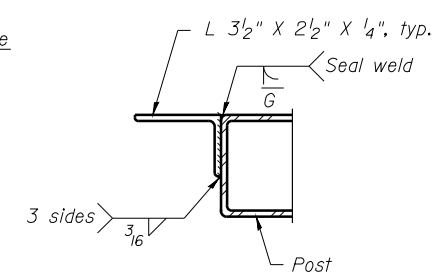


ELEVATION
GROUND LINE & STUB POST

* For all "Point 1" and "Point 2" locations, "Clearance Line" must be at or above top of stub post.

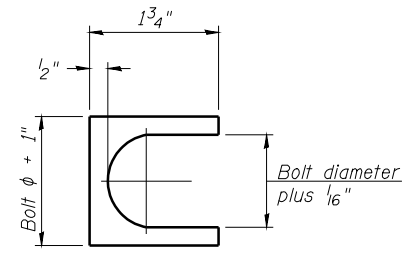


SECTION B-B



SECTION C-C

Weld continuously around corners.



SHIM DETAIL

Furnish two 0.01" thick and two 0.03" thick stainless steel or brass (ASTM B36) shims per post.

**BREAK-AWAY TUBULAR STEEL
SIGN POSTS AND DETAILS**

SIGNING DETAIL
FAI-72, MACARTHUR BLVD

DESIGNED	-
CHECKED	-
DRAWN	-
CHECKED	-

EXAMINED	20
PASSED	

NUMBER	REVISION	DATE