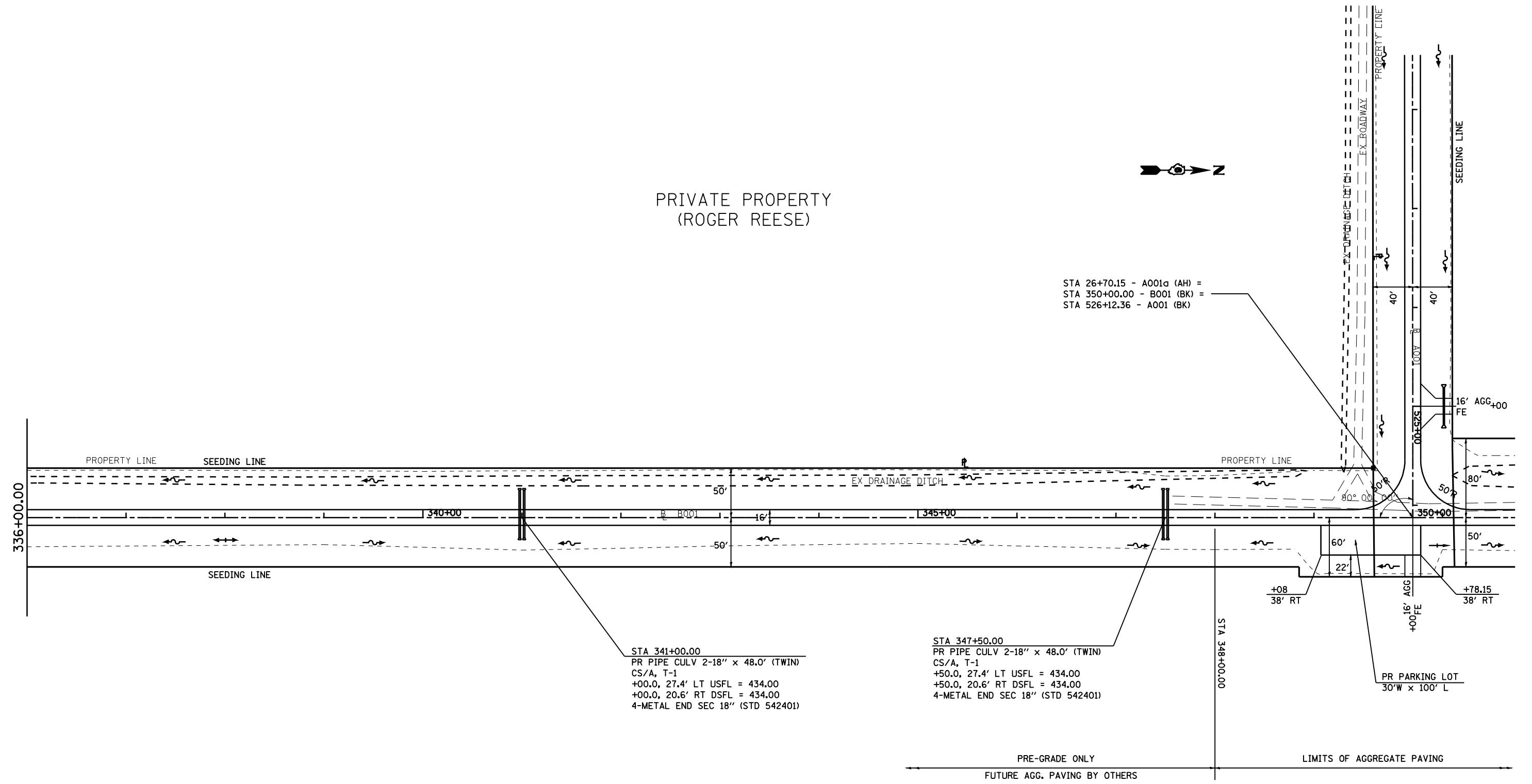


PRIVATE PROPERTY
(ROGER REESE)



STA 26+70.15 - A001a (AH) =
STA 350+00.00 - B001 (BK) =
STA 526+12.36 - A001 (BK) =



STA 341+00.00
PR PIPE CULV 2-18" x 48.0' (TWIN)
CS/A, T-1
+00.0, 27.4' LT USFL = 434.00
+00.0, 20.6' RT DSFL = 434.00
4-METAL END SEC 18" (STD 542401)

STA 347+50.00
PR PIPE CULV 2-18" x 48.0' (TWIN)
CS/A, T-1
+50.0, 27.4' LT USFL = 434.00
+50.0, 20.6' RT DSFL = 434.00
4-METAL END SEC 18" (STD 542401)

PR PARKING LOT
30'W x 100' L

PRE-GRADE ONLY
FUTURE AGG. PAVING BY OTHERS

LIMITS OF AGGREGATE PAVING

FIELD # 12
STATE OF ILLINOIS

• LAGRANGE WETLAND BANK
•• D6 WETLAND MITIGATION 3

FILE NAME =	USER NAME = laughlinr1	DESIGNED -	REVISED -
C:\Projects\d650305\contract 03\sh.t.plt	fileb001.dgn	DRAWN - KPG	REVISED -
	PLOT SCALE = 100.0000' / IN.	CHECKED - JCN	REVISED -
	PLOT DATE = Mar-17-2008 12:06:32PM	DATE -	REVISED -

STATE OF ILLINOIS
DEPARTMENT OF TRANSPORTATION

PLAN SHEET - B001

SCALE: SHEET NO. OF SHEETS STA. TO STA.

F.A.P. RTE.	SECTION	COUNTY	TOTAL SHEETS	SHEET NO.
•	••	BROWN	174	46
CONTRACT NO. 72968				
FED. ROAD DIST. NO. ILLINOIS FED. AID PROJECT				