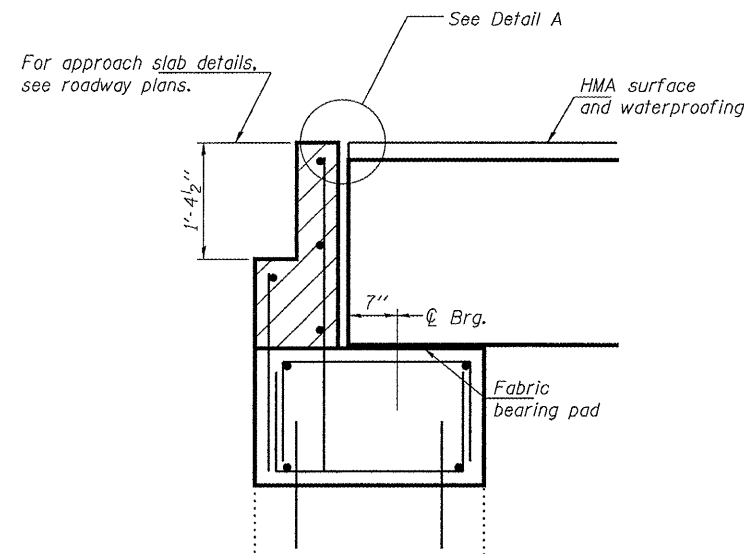


STATE OF ILLINOIS
DEPARTMENT OF TRANSPORTATION

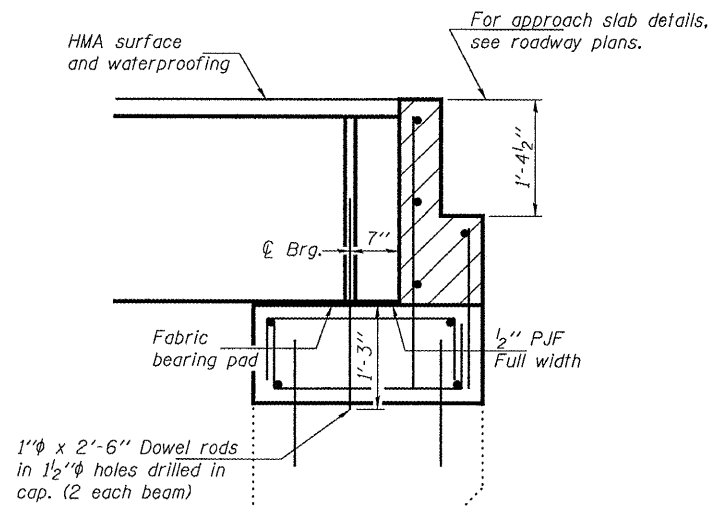
ROUTE NO.	SECTION	COUNTY	TOTAL SHEETS	SHEET NO.
IL 97		SANGAMON	29	18
FED. ROAD DIST. NO. 7	ILLINOIS	FED. AID PROJECT		

SHEET NO. 5
8 SHEETS

Contract Number: 72B70

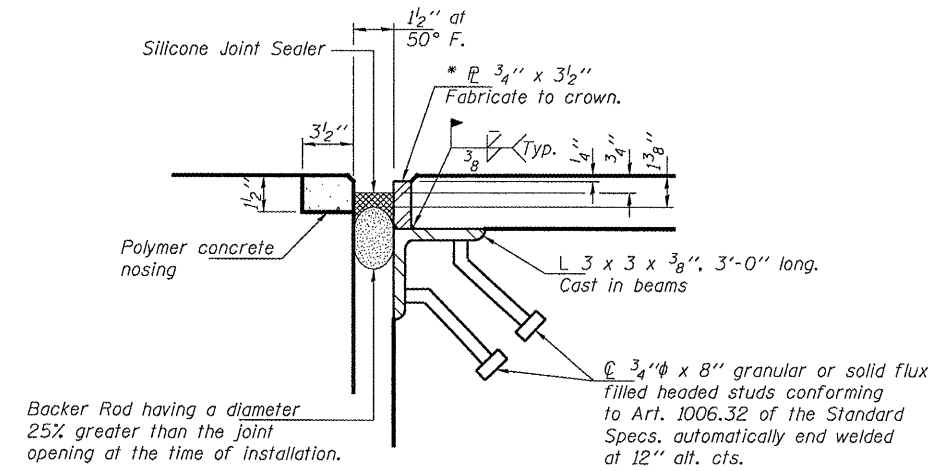


SECTION THRU E. ABUTMENT



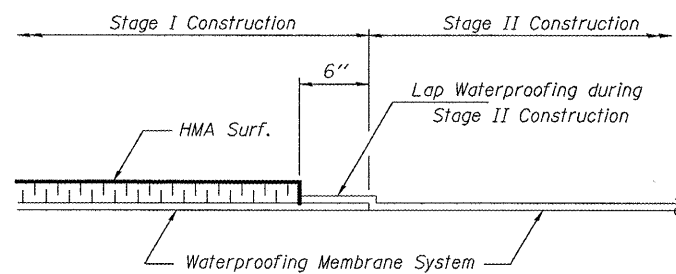
SECTION THRU W. ABUTMENT

Notes :
After beams have been erected, holes shall be drilled into substructure and anchor dowels placed. Dowel holes shall be filled with non-shrink grout to top of beam and allowed to cure min. 24 hrs. prior to grouting the shear keys.
Hatched area to be poured after beams are in place.

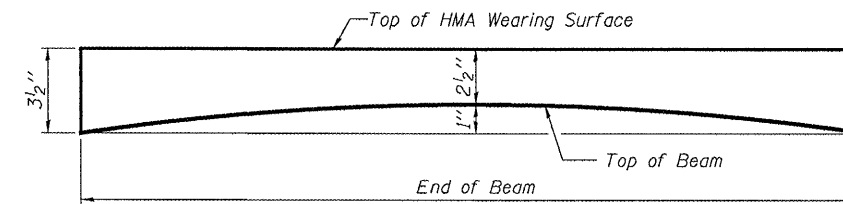


DETAIL A

* Furnish in segments of 20 ft. maximum length. Maximum space between installed segments shall be 3/16". Seal space with Silicone Sealant suitable for Structural Steel. After fabrication, all surfaces of the steel \varnothing shall be given one shop coat of paint specified for structural steel. No field painting required. Cast included with HMA Surface Course.



WATERPROOFING TREATMENT AT STAGE CONSTRUCTION



ANTICIPATED INITIAL CAMBER DIAGRAM

DESIGNED	VHV
CHECKED	ATH
DRAWN	baliva
CHECKED	VHV ATH

APRIL 30, 2008

EXAMINED *Carl Perry*
ENGINEER OF STRUCTURAL SERVICES

PASSED *Ralph E. Anderson*
ENGINEER OF BRIDGES AND STRUCTURES

JOINT DETAILS
IL. 97 OVER PRAIRIE CREEK
SANGAMON COUNTY
SN 084-0046