

F.A.P. RTE.	SECTION	COUNTY	TOTAL SHEETS	SHEET NO.
658	102N	SANGAMON	7	1
FED. ROAD DIST. NO.	ILLINOIS	CONTRACT NO. 72B77		

STATE OF ILLINOIS  
DEPARTMENT OF TRANSPORTATION  
DIVISION OF HIGHWAYS

**PROPOSED  
HIGHWAY PLANS**

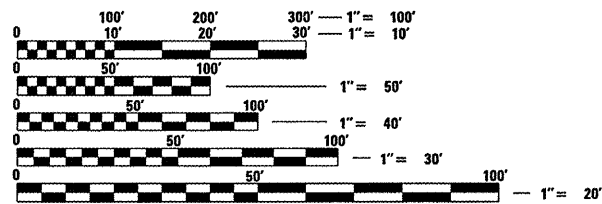
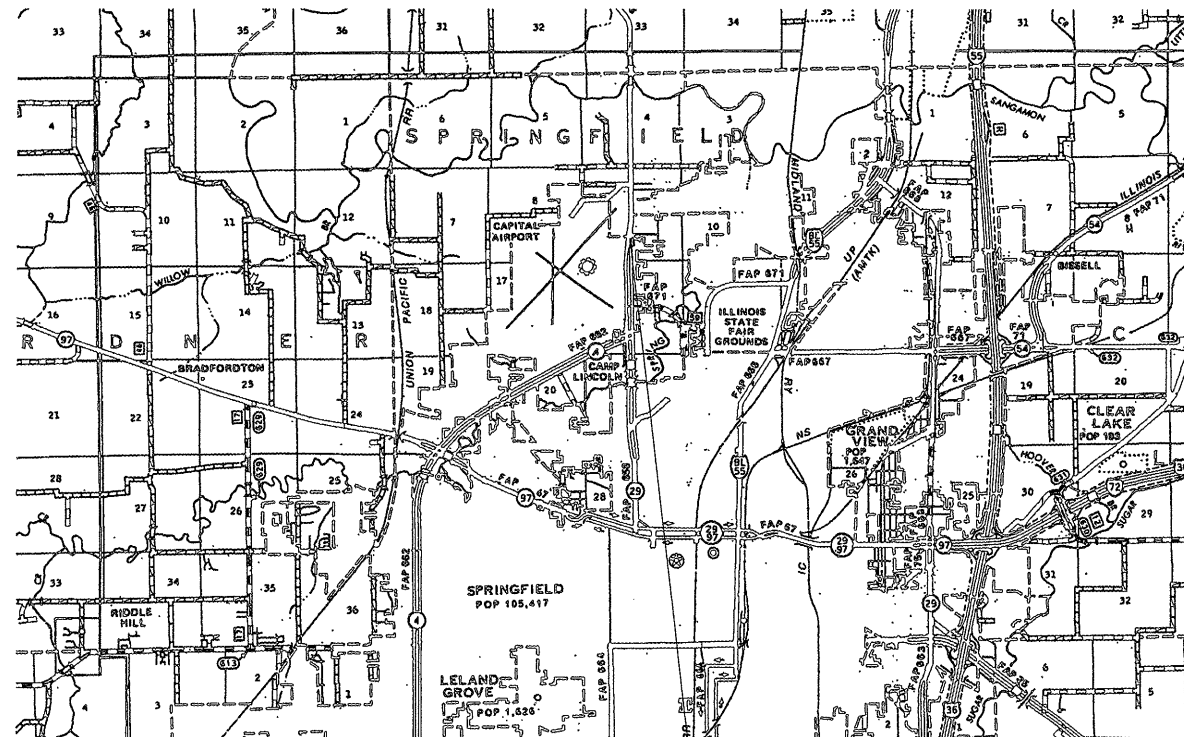
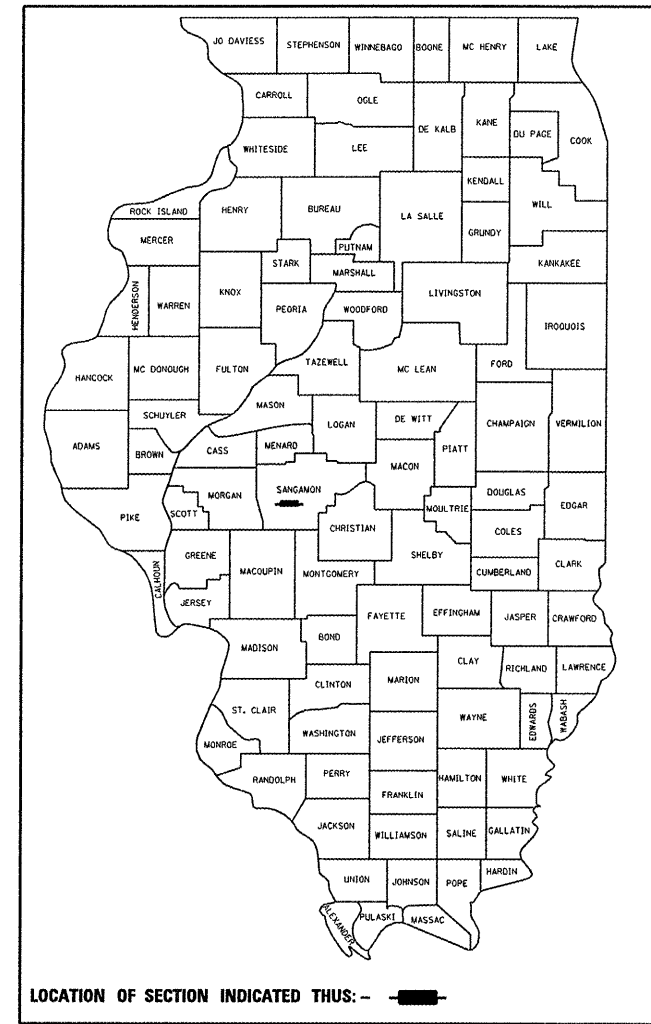
FAP ROUTE 658 (IL 29)  
SECTION 102N

SANGAMON COUNTY  
C-96-039-08

FOR INDEX OF SHEETS, SEE SHEET NO. 2

FOR LIST OF STANDARDS, SEE SHEET NO. 2

D-96-039-08



FULL SIZE PLANS HAVE BEEN PREPARED USING STANDARD ENGINEERING SCALES. REDUCED SIZED PLANS WILL NOT CONFORM TO STANDARD SCALES. IN MAKING MEASUREMENTS ON REDUCED PLANS, THE ABOVE SCALES MAY BE USED.

J.U.L.I.E.  
JOINT UTILITY LOCATION INFORMATION FOR EXCAVATION  
1-800-892-0123  
OR 811

INTERSECTION IMPROVEMENT HACKMORE DRIVE @ IL 29

PROJECT ENGINEER: JOHN NEGANGARD (217) 782-6990  
SQUAD LEADER: VINCE MADONIA (217) 785-9046

CONTRACT NO. 72B77

STATE OF ILLINOIS  
DEPARTMENT OF TRANSPORTATION  
DIVISION OF HIGHWAYS

SUBMITTED MAR 28 2008

Christine M. Reed  
DEPUTY DIRECTOR OF HIGHWAYS, REGION ENGINEER

May 9 2008  
Eric E. Harn  
ENGINEER OF DESIGN AND ENVIRONMENT

May 9 2008  
Christine M. Reed  
DIRECTOR OF HIGHWAYS, CHIEF ENGINEER

PRINTED BY THE AUTHORITY  
OF THE STATE OF ILLINOIS

GENERAL NOTES:

1. ANY REFERENCE TO THE STANDARDS THROUGHOUT THE PLANS SHALL BE INTERPRETED TO BE THE LATEST STANDARDS OF THE DEPARTMENT AS INCLUDED IN THE PLANS.
2. NO EXCAVATION ANTICIPATED ON THIS PROJECT WHICH WOULD AFFECT UTILITIES. SHOULD ANY EXCAVATION BE REQUIRED, J. U. L. I. E. SHALL BE NOTIFIED A MINIMUM OF 48 HOURS IN ADVANCE - (800) 892-0123.
3. ALL PROPOSED PAVEMENT MARKINGS SHALL BE PREFORMED PLASTIC IN NATURE AND SHALL CONFORM TO THE DISTRICT 6 PAVEMENT MARKING STANDARDS.
4. ALL CONFLICTING EXISTING STRIPING WILL BE REMOVED.
5. ALL PAVEMENT MARKINGS SHALL BE VERIFIED BY RESIDENT/FIELD ENGINEER PRIOR TO THEIR PLACEMENT.
6. EXISTING PAVEMENT DAMAGED DUE TO THE CONTRACTOR'S OPERATIONS, NOT OTHERWISE NECESSARY TO REPLACE, SHALL BE REPLACED AT THE EXPENSE OF THE CONTRACTOR.

INDEX OF SHEETS:

1. COVER SHEET
2. GENERAL NOTES
3. SUMMARY OF QUANTITIES
4. TRAFFIC SIGNAL LEGENDS
5. TRAFFIC SIGNAL LAYOUT
6. CABLE DIAGRAM

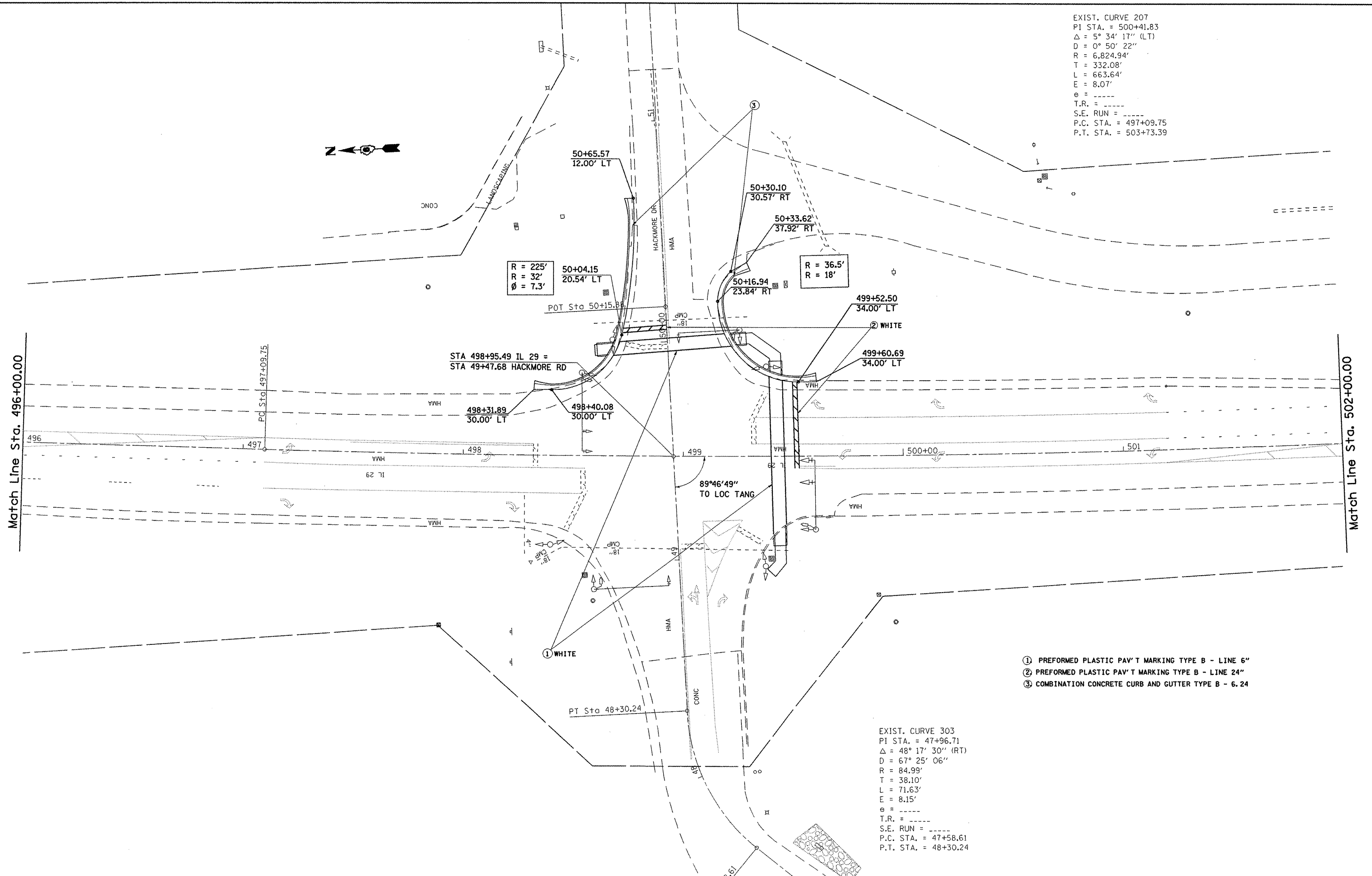
LIST OF STANDARDS:

- 000001-05
- 001006
- 424001-05
- 606001-03
- 701101-01
- 701106-01
- 701701-05
- 701901
- 857001
- 878001-06
- 880006

DISTRICT SIX	
EXAMINED <u>March 4</u> 20 <u>08</u>	
<i>Louis J. Hoare</i>	
OPERATIONS ENGINEER	
EXAMINED <u>FEB 27</u> 20 <u>08</u>	
<i>W. B. J.</i>	
PROGRAM IMPLEMENTATION ENGINEER	
EXAMINED <u>FEB 27</u> 20 <u>08</u>	
<i>W. B. J.</i>	
PROGRAM DEVELOPMENT ENGINEER	



EXIST. CURVE 207  
 PI STA. = 500+41.83  
 $\Delta = 5^\circ 34' 17''$  (LT)  
 $D = 0^\circ 50' 22''$   
 $R = 6,824.94'$   
 $T = 332.08'$   
 $L = 663.64'$   
 $E = 8.07'$   
 $e = \text{-----}$   
 T.R. = -----  
 S.E. RUN = -----  
 P.C. STA. = 497+09.75  
 P.T. STA. = 503+73.39



- ① PREFORMED PLASTIC PAV'T MARKING TYPE B - LINE 6"
- ② PREFORMED PLASTIC PAV'T MARKING TYPE B - LINE 24"
- ③ COMBINATION CONCRETE CURB AND GUTTER TYPE B - 6.24

EXIST. CURVE 303  
 PI STA. = 47+96.71  
 $\Delta = 48^\circ 17' 30''$  (RT)  
 $D = 67^\circ 25' 06''$   
 $R = 84.99'$   
 $T = 38.10'$   
 $L = 71.63'$   
 $E = 8.15'$   
 $e = \text{-----}$   
 T.R. = -----  
 S.E. RUN = -----  
 P.C. STA. = 47+58.61  
 P.T. STA. = 48+30.24

FILE NAME = C:\Projects\4603988\ahelpn-20.dgn	USER NAME = laughlinr1	DESIGNED -	REVISED -
		DRAWN -	REVISED -
		CHECKED -	REVISED -
		DATE -	REVISED -

**STATE OF ILLINOIS  
 DEPARTMENT OF TRANSPORTATION**

<b>INTERSECTION IMPROVEMENTS</b>			
SCALE:	SHEET NO.	OF SHEETS	STA. TO STA.

F.A.P. RTE.	SECTION	COUNTY	TOTAL SHEETS	SHEET NO.
658	102N	SANGAMON	7	4
CONTRACT NO. 72B77				
FED. ROAD DIST. NO. ILLINOIS FED. AID PROJECT				



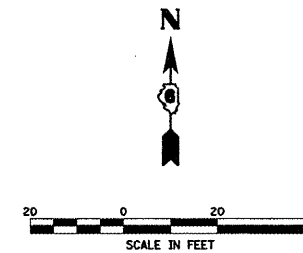
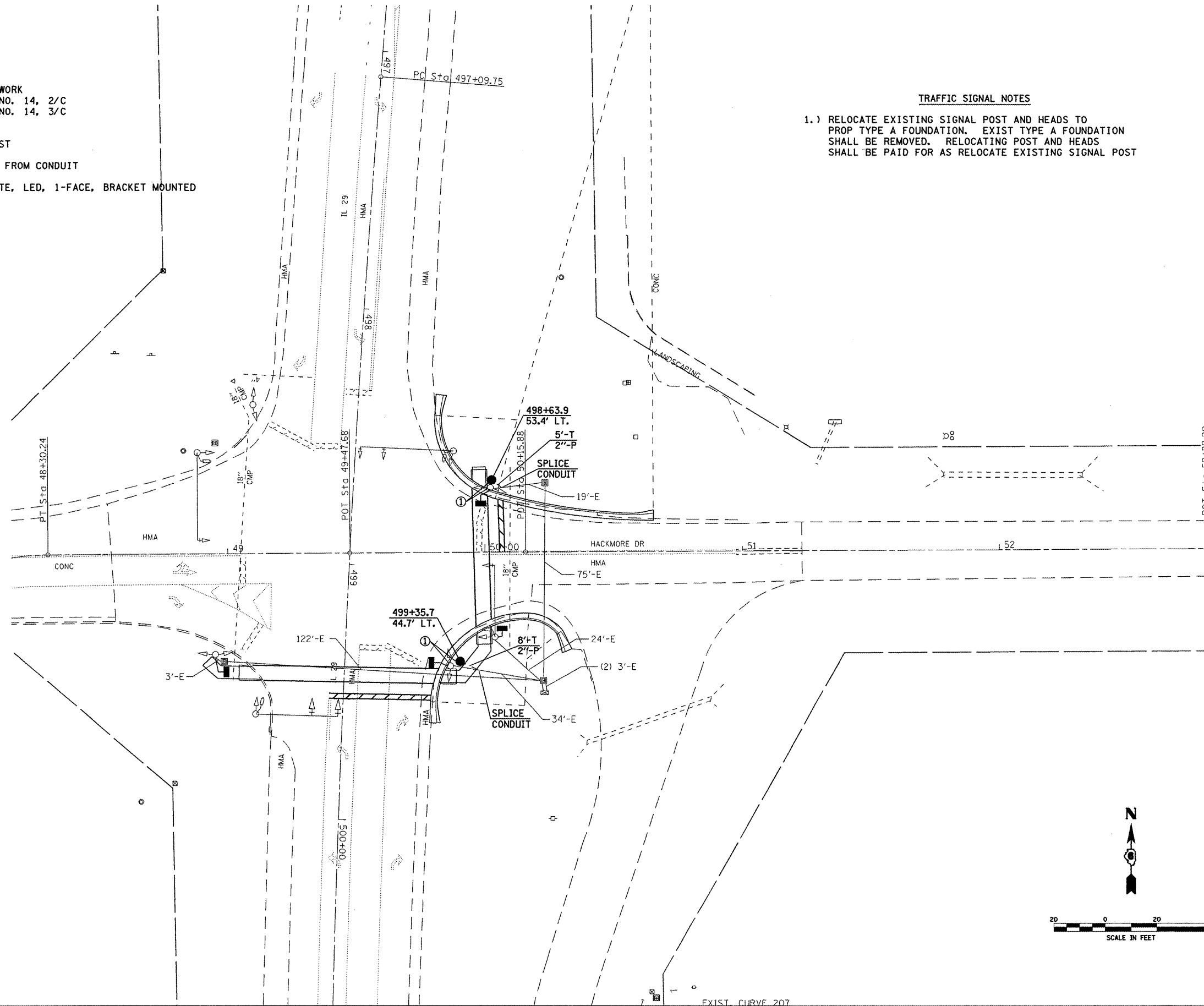
TRAFFIC SIGNAL QUANTITIES

LOCATION: IL 29 & HACKMORE

QUANTITY	UNIT	ITEM
13.0	FOOT	CONDUIT IN TRENCH, 2" DIA., PVC
13.0	FOOT	TRENCH AND BACKFILL FOR ELECTRICAL WORK
402.0	FOOT	ELECTRIC CABLE IN CONDUIT, SIGNAL, NO. 14, 2/C
430.0	FOOT	ELECTRIC CABLE IN CONDUIT, SIGNAL, NO. 14, 3/C
6.0	FOOT	CONCRETE FOUNDATION, TYPE A
4	EACH	PEDESTRIAN PUSHBUTTON
2	EACH	RELOCATE EXISTING TRAFFIC SIGNAL POST
1	EACH	MODIFY EXISTING CONTROLLER
45.0	FOOT	REMOVE AND REINSTALL ELECTRIC CABLE FROM CONDUIT
2	EACH	REMOVE EXISTING CONCRETE FOUNDATION
4	EACH	PEDESTRIAN SIGNAL HEAD, POLYCARBONATE, LED, 1-FACE, BRACKET MOUNTED

TRAFFIC SIGNAL NOTES

- 1.) RELOCATE EXISTING SIGNAL POST AND HEADS TO PROP TYPE A FOUNDATION. EXIST TYPE A FOUNDATION SHALL BE REMOVED. RELOCATING POST AND HEADS SHALL BE PAID FOR AS RELOCATE EXISTING SIGNAL POST



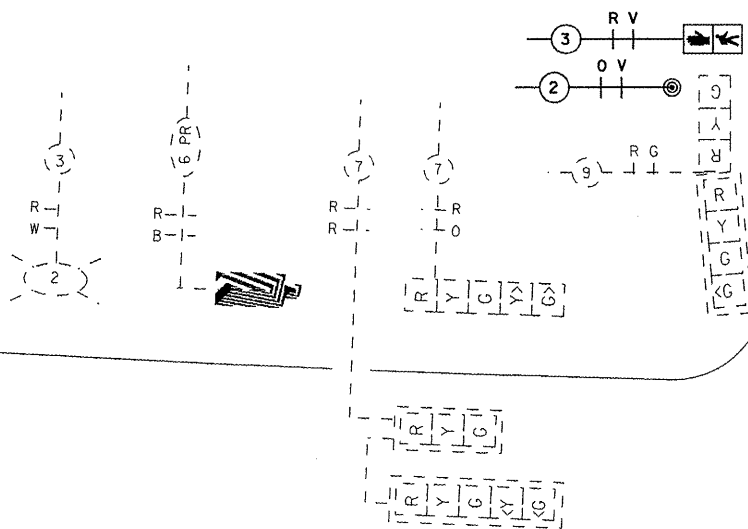
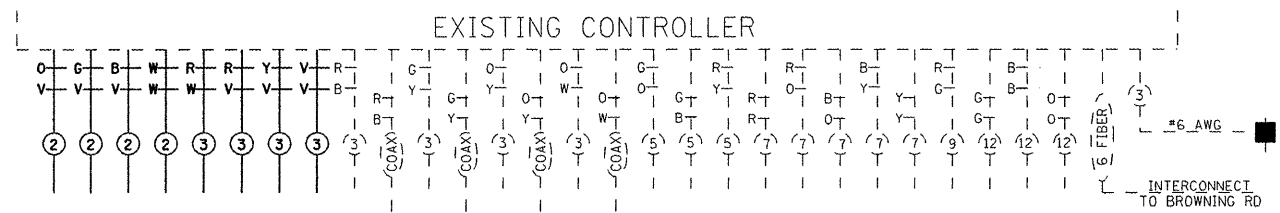
FILE NAME =	USER NAME = laughlinr1	DESIGNED -	REVISED -
C:\Projects\16603908\ts.sheets.dgn		DRAWN -	REVISED -
	PLOT SCALE = 40.0000' / IN.	CHECKED -	REVISED -
	PLOT DATE = Apr-01-2006 07:08:23AM	DATE -	REVISED -

**STATE OF ILLINOIS  
DEPARTMENT OF TRANSPORTATION**

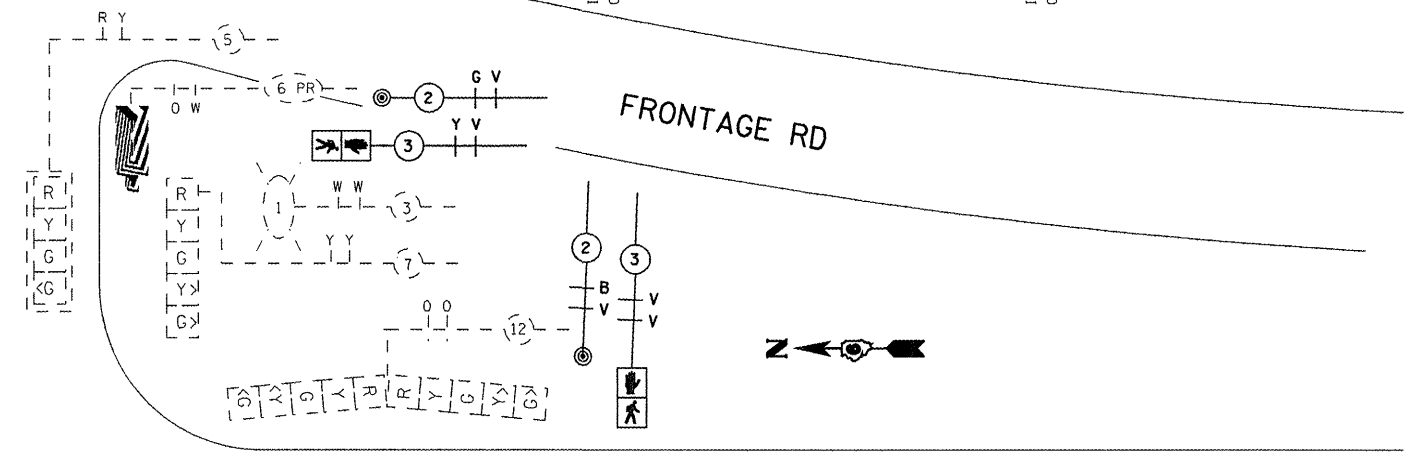
**TRAFFIC SIGNAL LAYOUT**

SCALE: SHEET NO. 5 OF SHEETS STA. TO STA.

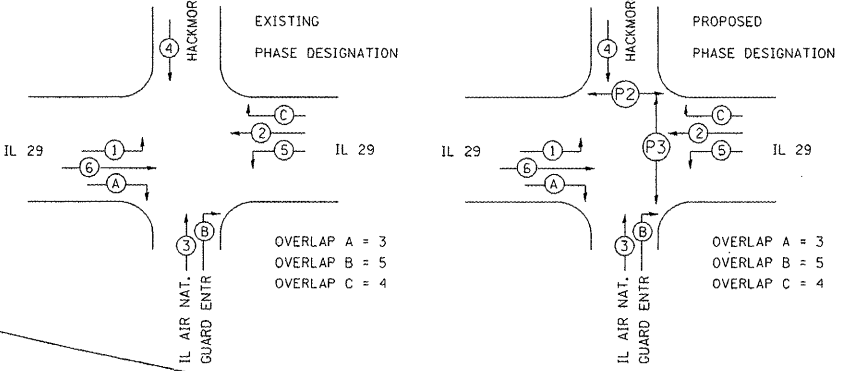
F.A.P. RTE.	SECTION	COUNTY	TOTAL SHEETS	SHEET NO.
658	102N	SANGAMON	7	6
FED. ROAD DIST. NO. ILLINOIS FED. AID PROJECT				
CONTRACT NO. 72B77				



HACKMORE RD

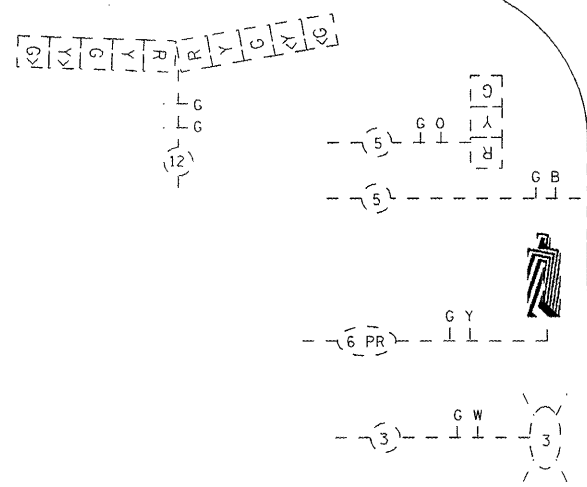


FRONTAGE RD

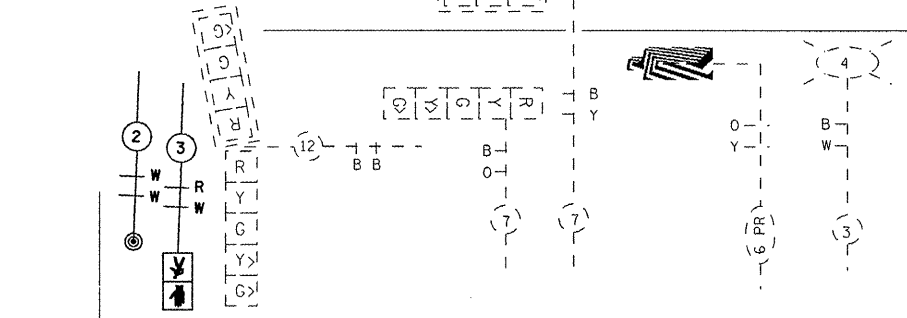


IL 29

IL 29



IL AIR NATIONAL GUARD ENTR



FILE NAME = C:\Projects\603908\ts_sheets.dgn	USER NAME = laughlinr1	DESIGNED -	REVISED -
		DRAWN -	REVISED -
		CHECKED -	REVISED -
		DATE -	REVISED -
	PLOT SCALE = 40.0000' / IN.		
	PLOT DATE = Apr-01-2008 07:09:26AM		

**STATE OF ILLINOIS  
DEPARTMENT OF TRANSPORTATION**

<b>CABLE DIAGRAM</b>			
SCALE:	SHEET NO. 6 OF	SHEETS	STA. TO STA.

F.A.P RTE.	SECTION	COUNTY	TOTAL SHEETS	SHEET NO.
658	102N	SANGAMON	7	7
CONTRACT NO. 72B77				
FED. ROAD DIST. NO. ILLINOIS FED. AID PROJECT				