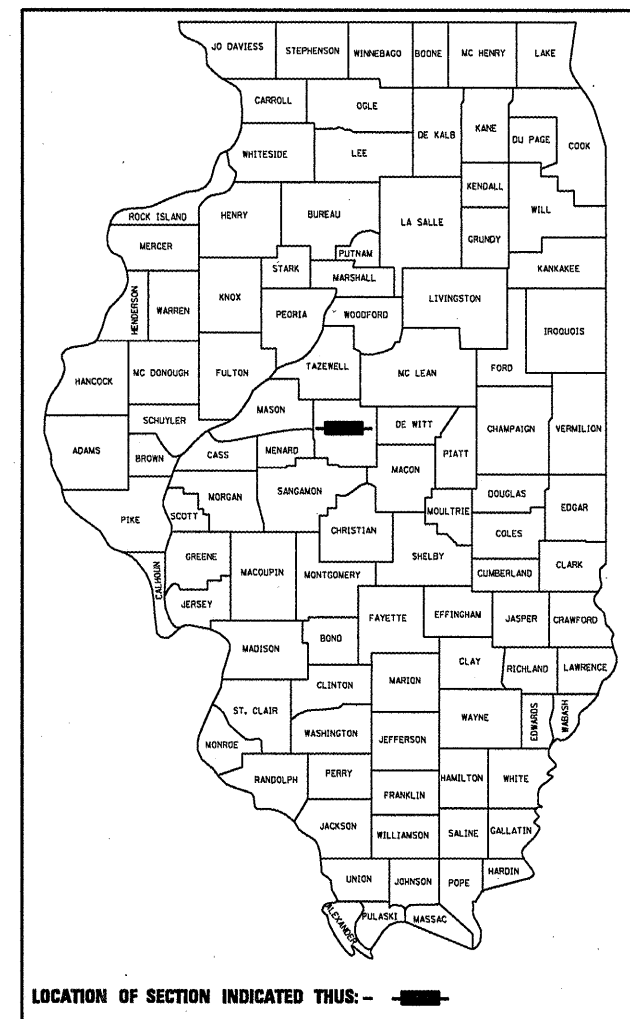


STATE OF ILLINOIS
DEPARTMENT OF TRANSPORTATION
DIVISION OF HIGHWAYS

F.A.P. RTE.	SECTION	COUNTY	TOTAL SHEETS	SHEET NO.
717	*	LOGAN	12	1
FED. ROAD DIST. NO.		ILLINOIS	CONTRACT NO. 72B94	

*D-6 SHLDR RUMBLE STRIPS 2008-5

D-96-059-08



FOR INDEX OF SHEETS, SEE SHEET NO. 2

HIGHWAY CLASSIFICATION

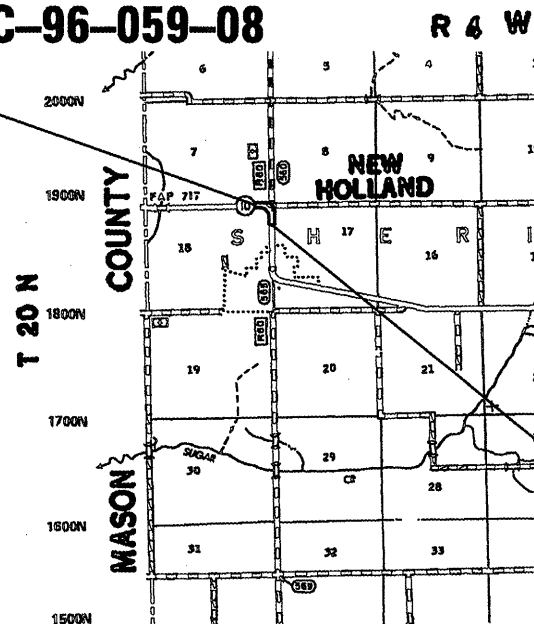
F.A.P. Route 717 (IL 10)
MINOR ARTERIAL

A.D.T. - 1,600 (2008) PV = 90.70%
A.D.T. - 1,900 (2028) SU = 1.50%
DESIGN SPEED - 55 mph MU = 7.80%
POSTED SPEED - 55 mph

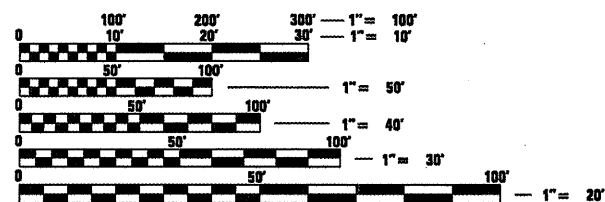
**PROPOSED
HIGHWAY PLANS**

FAP ROUTE 717 (IL 10)
SECTION D-6 SHLDR RUMBLE STRIPS 2008-5
PROJECT : ACHSIP-0717(030)
LOGAN COUNTY
C-96-059-08

SECTION D-6 SHLDR RUMBLE STRIPS 2008-5
BEGINS AT STA. 303+00.00



SECTION D-6 SHLDR RUMBLE STRIPS 2008-5
ENDS AT STA. 315+00.00



FULL SIZE PLANS HAVE BEEN PREPARED USING STANDARD ENGINEERING SCALES. REDUCED SIZED PLANS WILL NOT CONFORM TO STANDARD SCALES. IN MAKING MEASUREMENTS ON REDUCED PLANS, THE ABOVE SCALES MAY BE USED.

J.U.L.I.E.
JOINT UTILITY LOCATION INFORMATION FOR EXCAVATION
1-800-892-0123
OR 811

PROJECT ENGINEER: SAL MADONIA (217) 782-4761
SQUAD LEADER: RENE CABRERA (217) 557-9062
TECHNICIAN: JONATHAN COX
CONTRACT NO. 72B94

LOCATION MAP

GROSS LENGTH = 1,200 ft. = 0.23 mi.
NET LENGTH = 1,200 ft. = 0.23 mi.

STATE OF ILLINOIS
DEPARTMENT OF TRANSPORTATION
DIVISION OF HIGHWAYS
SUBMITTED MAR. 13, 2008
Christina M. Reed
DEPUTY DIRECTOR OF HIGHWAYS, REGION ENGINEER
May 9, 2008
Erik E. Horn
ENGINEER OF DESIGN AND ENVIRONMENT
May 9, 2008
Christina M. Reed
DIRECTOR OF HIGHWAYS, CHIEF ENGINEER

**PRINTED BY THE AUTHORITY
OF THE STATE OF ILLINOIS**

INDEX OF SHEETS

GENERAL NOTES

- ① WHERE SECTION OR SUBSECTION MONUMENTS ARE ENCOUNTERED, THE ENGINEER SHALL BE NOTIFIED BEFORE SUCH MONUMENTS ARE REMOVED. THE CONTRACTOR SHALL PROTECT AND CAREFULLY PRESERVE ALL PROPERTY MARKS AND MONUMENTS UNTIL THE OWNER, AND AUTHORIZED SURVEYOR OR AGENT HAS WITNESSES OR OTHERWISE REFERENCED THEIR LOCATION.
- ② ANY REFERENCE TO A STANDARD IN THE PLANS SHALL BE INTERPRETED TO MEAN THE EDITION, AS INDICATED BY THE SUB-NUMBER LISTED IN THE INDEX OF SHEETS, OR THE COPY OF THE STANDARD INCLUDED IN THE PLANS.
- ③ EXCESS MATERIAL COLLECTED FROM EXCAVATING AND GRADING EXISTING SHOULDERS SHALL BE USED TO GRADE AND PREPARE THE SUB-BASE FOR PROPOSED AGGREGATE SHOULDERS, TYPE B TO THE SATISFACTION OF THE ENGINEER. THIS WORK SHALL BE INCLUDED IN THE CONTRACT UNIT PRICE PER TON FOR AGGREGATE SHOULDERS, TYPE B.
- ④ AN AVERAGE THICKNESS OF 2" WAS USED TO CALCULATE THE QUANTITY FOR AGGREGATE SHOULDERS, TYPE B.
- ⑤ THE FOLLOWING MIXTURE REQUIREMENTS ARE APPLICABLE:

LOCATION(S):	IL 10
MIXTURE USE(S):	HMA SHOULDERS 8
AC/PG:	PG 58-22
R.A.P. % (MAX.):	50 %
DESIGN AIR Voids	2.0 @ N design = 30
MIXTURE COMPOSITION (Gradation Mixture)	BAM MIX
FRICTION AGGREGATE	N/A

RATES OF APPLICATION TABLES

THE FOLLOWING RATES OF APPLICATION HAVE BEEN ASSUMED IN CALCULATING PLAN QUANTITIES.

HOT-MIX ASPHALT MATERIALS (PRIME COAT): 0.00038 TON / SQ YD (ON PAVEMENT)
 0.001425 TON / SQ YD (ON AGGREGATE)
 AGGREGATE MATERIALS (PRIME COAT): 0.002 TON / SQ YD
 HOT-MIX ASPHALT SURFACE MIX C / BINDER (112 LBS): 0.056 TON / SQ YD • in
 AGGREGATE MATERIALS: 2.05 TON / CU YD

COMMITMENTS

(NONE)

INDEX OF SHEETS

- 1 COVER SHEET
- 2 INDEX OF SHEETS
- 3 SUMMARY OF QUANTITIES
- 4 TYPICAL SECTIONS
- 5 SCHEDULE OF QUANTITIES
- 6 - 8 PLAN VIEW (3)
- 9 - 11 PAVEMENT MARKING DETAILS (3)
- 12 SHOULDER RUMBLE STRIP DETAIL

STANDARDS

000001-05	STANDARD SYMBOLS, ABBREVIATIONS, AND PATTERNS
482001-02	HMA SHOULDER ADJACENT TO FLEXIBLE PAVEMENT
701011-01	OFF-ROAD MOVING OPERATIONS, 2L, 2W, DAY ONLY (RUMBLE STRIP, MOVING OPS)
701301-02	LANE CLOSURE, 2L, 2W, SHORT TIME OPERATIONS (CLEAN UP DEBRIS ON SHOULDER)
701306-01	LANE CLOSURE, 2L, 2W, SLOW MOVING OPERATIONS DAY ONLY, FOR SPEEDS ≥ 45MPH (SHLD OPS)
701311-02	LANE CLOSURE, 2L, 2W, MOVING OPERATIONS - DAY ONLY (PAVEMENT MARKING)
701326-02	LANE CLOSURE, 2L, 2W, PAVEMENT WIDENING, FOR SPEEDS ≥ 45 MPH (SHLD EXCAV & HMA SHLD)
701901	TRAFFIC CONTROL DEVICES
780001-01	TYPICAL PAVEMENT MARKING

DISTRICT SIX	
EXAMINED <u>March 14</u>	20 <u>08</u>
<i>Simon J. Harris</i>	
OPERATIONS ENGINEER	
EXAMINED <u>MAR 7</u>	20 <u>08</u>
<i>W.R. J...</i>	
PROGRAM IMPLEMENTATION ENGINEER	
EXAMINED <u>Mar 17</u>	20 <u>08</u>
<i>W.R. J...</i>	
PROGRAM DEVELOPMENT ENGINEER	

ILLINOIS DEPARTMENT OF TRANSPORTATION
SUMMARY OF QUANTITIES

SUMMARY OF QUANTITIES				90% FEDERAL 10% STATE (IL 10)		
CODE NO.	ITEM	UNIT	TOTAL QUANTITY	CONSTRUCTION TYPE CODE		
20200600	EXCAVATING AND GRADING EXISTING SHOULDER	UNIT	23	6FTY-2A		
48101200	AGGREGATE SHOULDERS, TYPE B	TON	87			
48203029	HOT-MIX ASPHALT SHOULDERS, 8"	SQ YD	762			
64200105	SHOULDER RUMBLE STRIP	FOOT	2,285			
67100100	MOBILIZATION	L SUM	1			
70100460	TRAFFIC CONTROL AND PROTECTION, STANDARD 701306	L SUM	1			
70100500	TRAFFIC CONTROL AND PROTECTION, STANDARD 701326	L SUM	1			
70103815	TRAFFIC CONTROL SURVEILLANCE	CAL DA	2			
70300230	TEMPORARY PAVEMENT MARKING - LINE 5"	FOOT	2,285			
* 78001120	PAINT PAVEMENT MARKING - LINE 5"	FOOT	2,285			

SUMMARY OF QUANTITIES				CONSTRUCTION TYPE CODE		
CODE NO.	ITEM	UNIT				

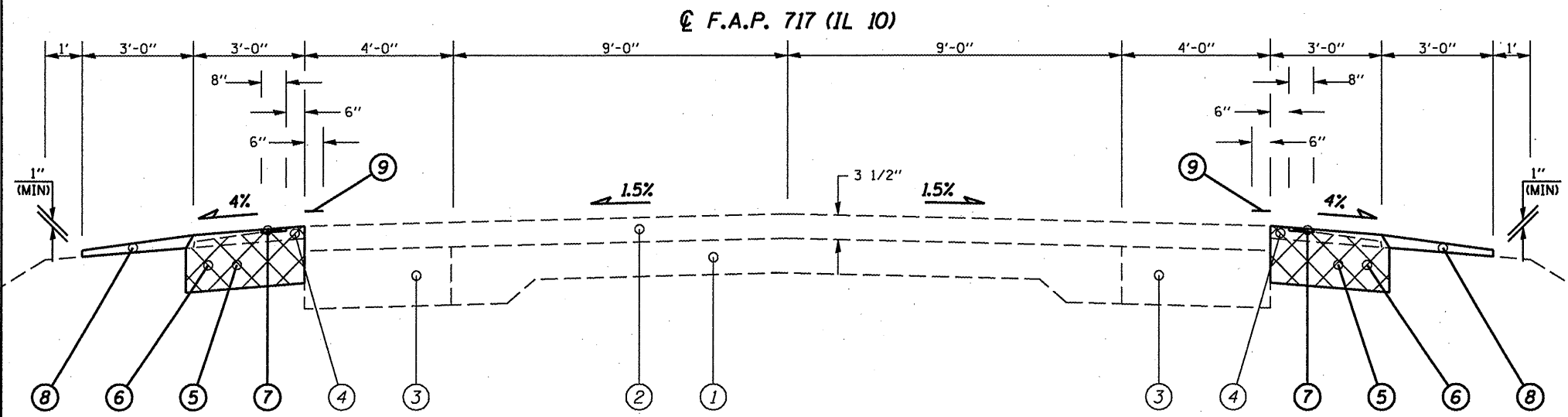
* SPECIALTY ITEMS

FILE NAME =	USER NAME = coxjw	DESIGNED - RSC	REVISED -
C:\Projects\672b94\caddshets\672b94-ent-soq.dgn		DRAWN - JWC	REVISED -
		CHECKED - RSC	REVISED -
		DATE - 02/08/08	REVISED -

STATE OF ILLINOIS
DEPARTMENT OF TRANSPORTATION

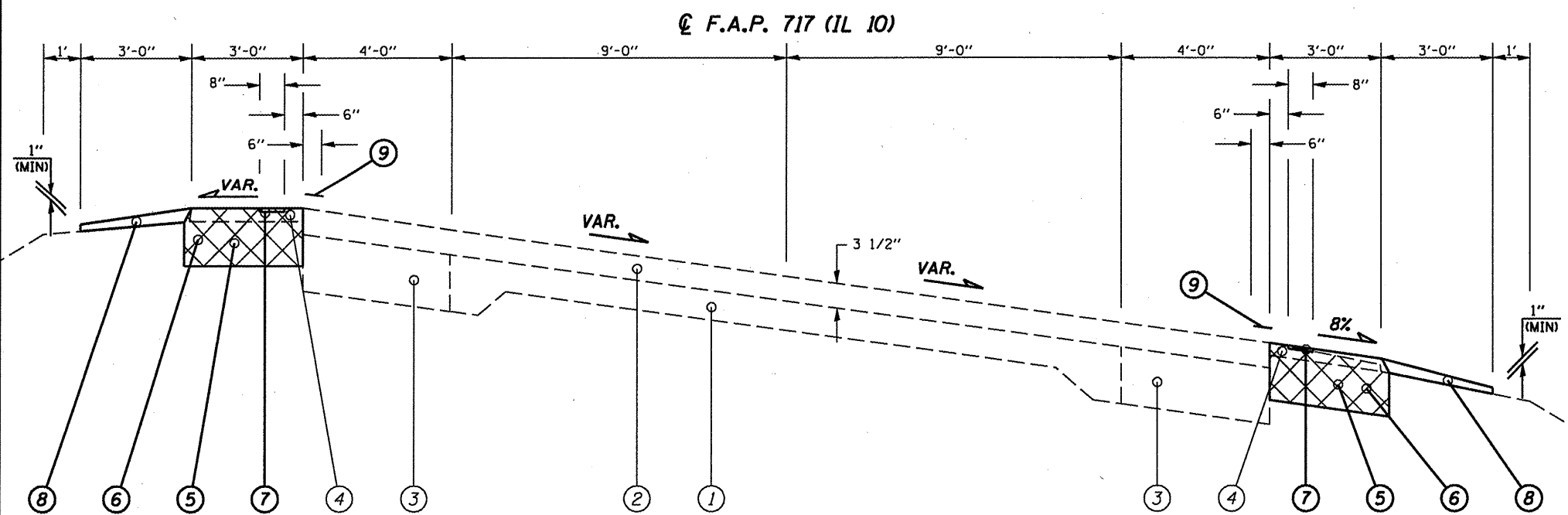
SUMMARY OF QUANTITIES	
SCALE:	SHEET NO. 1 OF 1 SHEETS STA. 303+00.00 TO STA. 315+00.00

F.A.P. RTE.	SECTION	COUNTY	TOTAL SHEETS	SHEET NO.
717		LOGAN	12	3
*D-6 SHLDR RUMBLE STRIPS 2008-5			CONTRACT NO. 72894	
FED. ROAD DIST. NO. [ILLINOIS] FED. AID PROJECT				



(1) STA 303+00.00 TO STA 303+97.70 [97.70']
 (3) STA 314+41.20 TO STA 315+00.00 [58.80']

LEGEND	
①	EXISTING P.C.C. PAVEMENT 9"-6"-9"
②	EXISTING BITUMINOUS OVERLAY
③	EXISTING P.C.C. BASE COURSE WIDENING 9"
④	EXISTING AGGREGATE SHOULDER, TYPE B
⑤	PROPOSED EXCAVATING AND GRADING EXISTING SHOULDER
⑥	PROPOSED HOT-MIX ASPHALT SHOULDERS, 8"
⑦	PROPOSED SHOULDER RUMBLE STRIP
⑧	PROPOSED AGGREGATE SHOULDERS, TYPE B
⑨	PROPOSED PAINT PAVEMENT MARKING - LINE 5"



(2) STA 303+97.70 TO STA 314+41.20 [1,043.50']

SIDE ROAD OMISSION
 IL 10/F.A.S. 560 INTR.
 STA 308+62.00 TO
 STA 309+77.00 LT

FULL S.E.: (S.E. = 8.3%)
 STA. 305+59.70 TO 312+79.20
S.E. TRANSITION:
 STA. 303+97.70 TO 305+59.70
 STA. 312+79.20 TO 314+41.20

FILE NAME =	USER NAME = coxjw	DESIGNED - JWC	REVISED -
C:\Projects\672b94\cadsheets\672b94\typical.dgn		DRAWN - JWC	REVISED -
		CHECKED - RSC	REVISED -
		DATE - 02/08/08	REVISED -

**STATE OF ILLINOIS
 DEPARTMENT OF TRANSPORTATION**

SCALE: NTS		SHEET NO. 1 OF 1 SHEETS		STA. 303+00.00 TO STA. 315+00.00	
------------	--	-------------------------	--	----------------------------------	--

F.A.P. RTE.	SECTION	COUNTY	TOTAL SHEETS	SHEET NO.
717	*	LOGAN	12	4
FED. ROAD DIST. NO. ILLINOIS FED. AID PROJECT			CONTRACT NO. 72B94	

*D-6 SHLDR RUMBLE STRIPS 2008-5

EXCAVATING AND GRADING EXISTING SHOULDER

LOCATION	QUANTITY (UNIT)
100' =UNIT	
F. A. P. 717 (IL 10)	
STA. 303+00.00 TO STA. 308+62.00	11.24
STA. 308+62.00 TO STA. 309+77.00 RT	1.15
SIDE ROAD OMISSION (IL 10/FAS 560 INTERSECTION) STA. 308+62.00 TO 309+77.00 LT	
STA. 309+77.00 TO STA. 315+00.00	10.46
PROJECT TOTAL	23

SHOULDER RUMBLE STRIP

LOCATION	QUANTITY (FOOT)
F. A. P. 717 (IL 10)	
STA. 303+00.00 TO STA. 308+62.00	1,124
STA. 308+62.00 TO STA. 309+77.00 RT	115
SIDE ROAD OMISSION (IL 10/FAS 560 INTERSECTION) STA. 308+62.00 TO 309+77.00 LT	
STA. 309+77.00 TO STA. 315+00.00	1,046
PROJECT TOTAL	2,285

HOT-MIX ASPHALT SHOULDERS, 8"

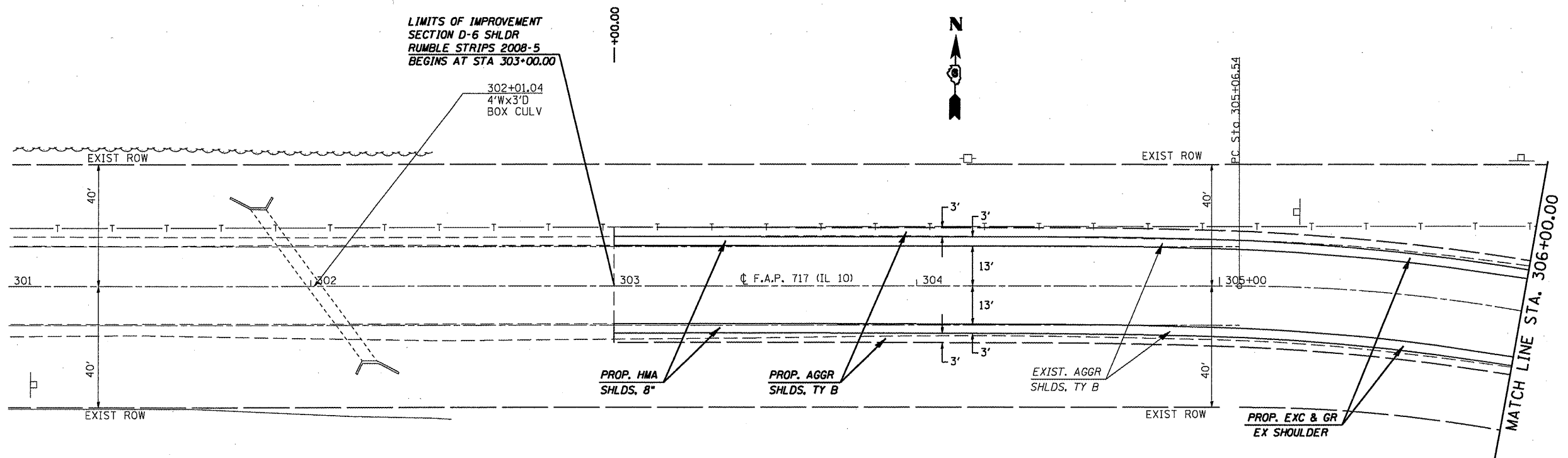
LOCATION	QUANTITY (SQ YD)
F. A. P. 717 (IL 10)	
STA. 303+00.00 TO STA. 308+62.00	374.67
STA. 308+62.00 TO STA. 309+77.00 RT	38.33
SIDE ROAD OMISSION (IL 10/FAS 560 INTERSECTION) STA. 308+62.00 TO 309+77.00 LT	
STA. 309+77.00 TO STA. 315+00.00	348.67
PROJECT TOTAL	762

PAINT PAVEMENT MARKING - LINE 5"

LOCATION	WHITE SOLID (FOOT)
F. A. P. 717 (IL 10)	
STA. 303+00.00 TO STA. 308+62.00	1,124
STA. 308+62.00 TO STA. 309+77.00 RT	115
SIDE ROAD OMISSION (IL 10/FAS 560 INTERSECTION) STA. 308+62.00 TO 309+77.00 LT	
STA. 309+77.00 TO STA. 315+00.00	1,046
PROJECT TOTAL	2,285

AGGREGATE SHOULDERS, TYPE B

LOCATION	QUANTITY (TON)
F. A. P. 717 (IL 10)	
STA. 303+00.00 TO STA. 308+62.00	42.67
STA. 308+62.00 TO STA. 309+77.00 RT	4.37
SIDE ROAD OMISSION (IL 10/FAS 560 INTERSECTION) STA. 308+62.00 TO 309+77.00 LT	
STA. 309+77.00 TO STA. 315+00.00	39.71
PROJECT TOTAL	87



IL 10

•D-6 SHLDR RUMBLE STRIPS 2008-5

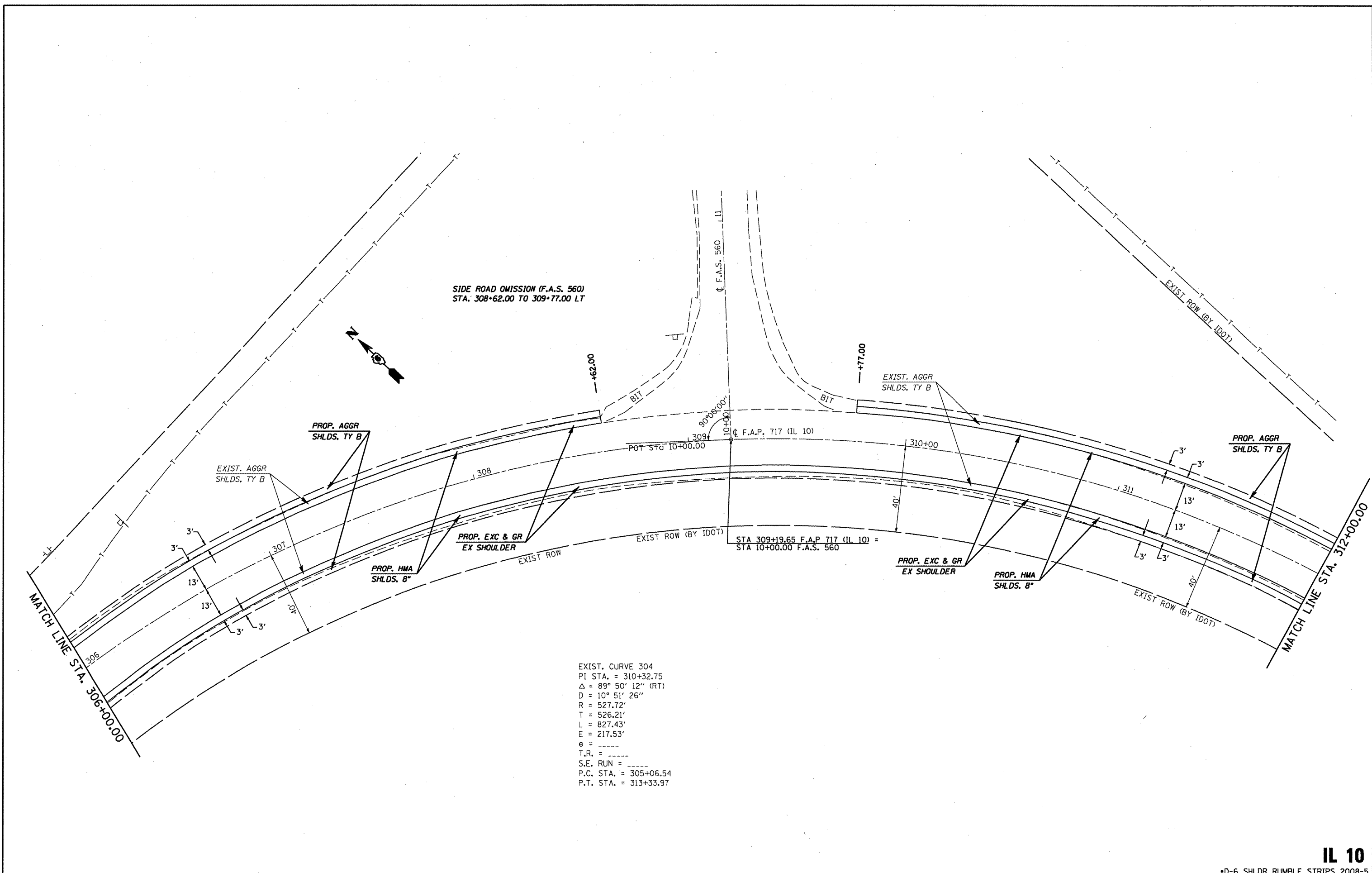
FILE NAME =	USER NAME = coxjm	DESIGNED - JWC	REVISED -
ca:\projects\672b94\cadd\sheet\672b94-1-plan1.dgn		DRAWN - JWC	REVISED -
PLOT SCALE = 40.0000' / IN.		CHECKED - RSC	REVISED -
PLOT DATE = Mar-14-2008 04:12:51PM		DATE - 02/20/08	REVISED -

**STATE OF ILLINOIS
DEPARTMENT OF TRANSPORTATION**

PLAN VIEW

SCALE: 20 SHEET NO. 1 OF 3 SHEETS STA. 303+00.00 TO STA. 306+00.00

F.A.P. RTE.	SECTION	COUNTY	TOTAL SHEETS	SHEET NO.
717		LOGAN	12	6
FED. ROAD DIST. NO. ILLINOIS FED. AID PROJECT			CONTRACT NO. 72B94	



IL 10

*D-6 SHLDR RUMBLE STRIPS 2008-5

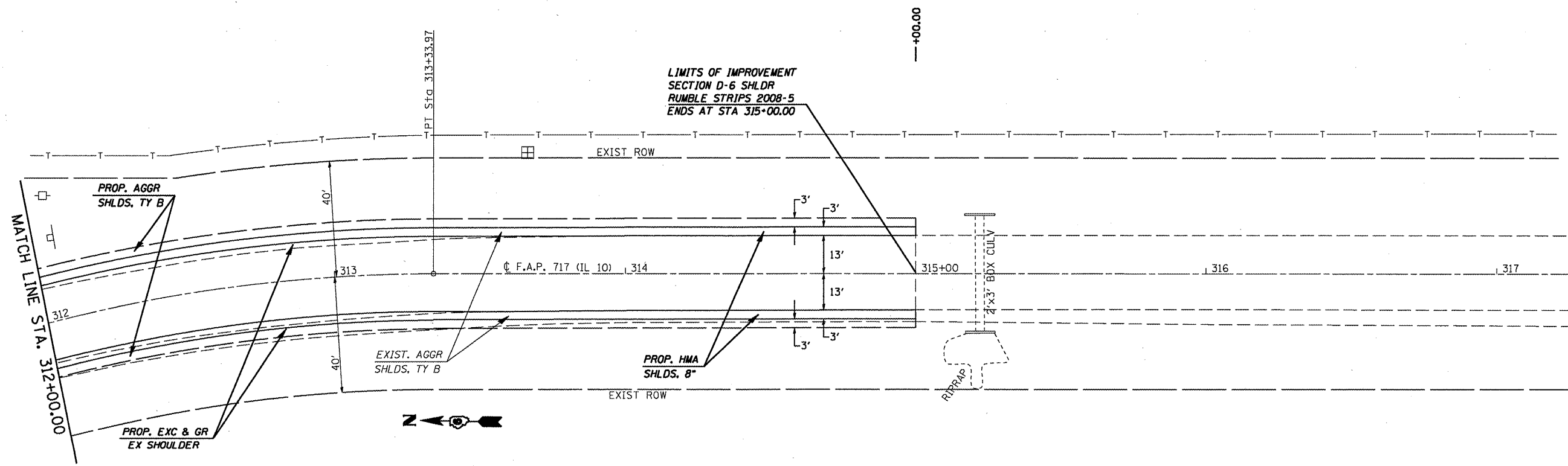
FILE NAME =	USER NAME = coxjm	DESIGNED - JWC	REVISED -
ca\projects\d672b94\roadsheets\d672b94\nt-plenl.dgn		DRAWN - JWC	REVISED -
PLOT SCALE = 40,0000 ' / IN.		CHECKED - RSC	REVISED -
PLOT DATE = Mar-14-2008 04:12:51PM		DATE - 02/20/08	REVISED -

**STATE OF ILLINOIS
DEPARTMENT OF TRANSPORTATION**

PLAN VIEW

SCALE: 20 SHEET NO. 2 OF 3 SHEETS STA. 306+00.00 TO STA. 312+00.00

F.A.P. RTE.	SECTION	COUNTY	TOTAL SHEETS	SHEET NO.
717		LOGAN	12	7
CONTRACT NO. 72894				
FED. ROAD DIST. NO. ILLINOIS FED. AID PROJECT				



IL 10

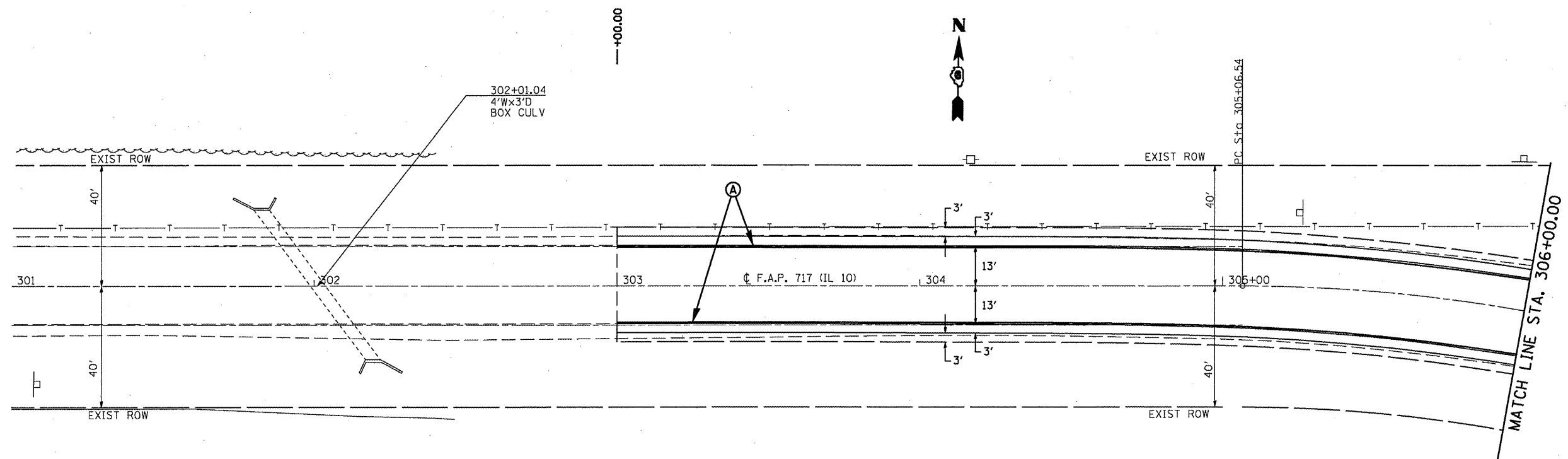
*D-6 SHLDR RUMBLE STRIPS 2008-5

FILE NAME =	USER NAME = coxjm	DESIGNED - JWC	REVISED -
ct:\projects\672b94\oadsheets\672b94\nt-plan.dgn		DRAWN - JWC	REVISED -
PLOT SCALE = 48.0000' / IN.		CHECKED - RSC	REVISED -
PLOT DATE = Mar-14-2008 04:12:52PM		DATE - 02/20/08	REVISED -

STATE OF ILLINOIS
DEPARTMENT OF TRANSPORTATION

PLAN VIEW
 SCALE: 20 SHEET NO. 3 OF 3 SHEETS STA. 312+00.00 TO STA. 315+00.00

F.A.P. RTE.	SECTION	COUNTY	TOTAL SHEETS	SHEET NO.
717	*	LOGAN	12	8
FED. ROAD DIST. NO.			ILLINOIS FED. AID PROJECT	
			CONTRACT NO. 72B94	



PAVEMENT MARKING LEGEND	
<i>(PAINT)</i>	
Ⓐ	PAVEMENT MARKING - LINE - 5" WHITE (SOLID)

IL 10

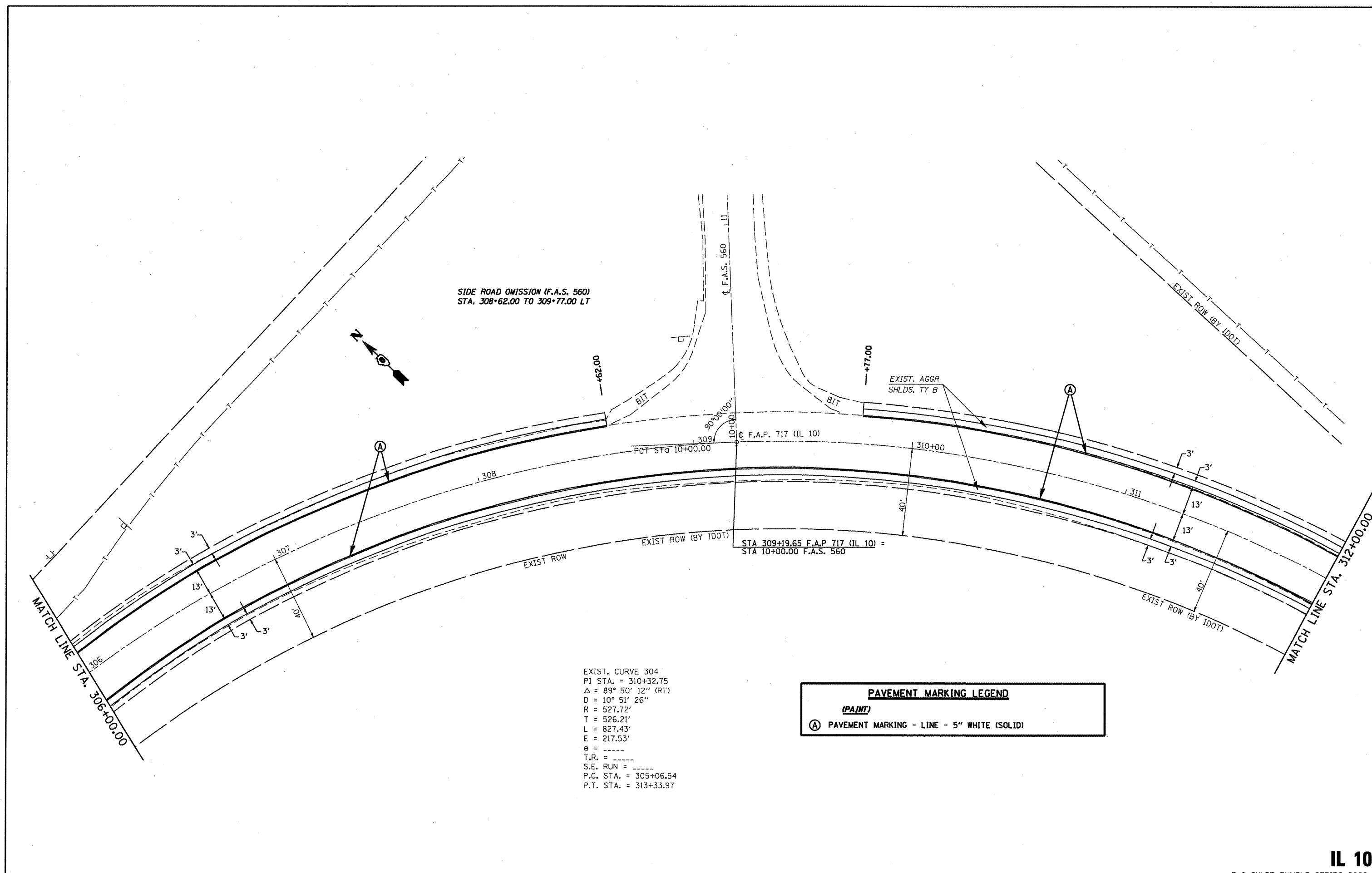
*D-6 SHLDR RUMBLE STRIPS 2008-5

FILE NAME =	USER NAME = coxjm	DESIGNED - JWC	REVISED -
c:\projects\672b94\cadsheets\672b94\1-pmk.dgn		DRAWN - JWC	REVISED -
PLOT SCALE = 40.0000' / IN.		CHECKED - RSC	REVISED -
PLOT DATE = Mar-14-2008 04:15:05PM		DATE - 02/20/08	REVISED -

**STATE OF ILLINOIS
DEPARTMENT OF TRANSPORTATION**

PAVEMENT MARKING DETAILS			
SCALE: 20	SHEET NO. 1 OF 3 SHEETS	STA. 303+00.00 TO STA. 306+00.00	

F.A.P. RTE.	SECTION	COUNTY	TOTAL SHEETS	SHEET NO.
717	*	LOGAN	12	9
FED. ROAD DIST. NO. [ILLINOIS] FED. AID PROJECT			CONTRACT NO. 72B94	



SIDE ROAD OMISSION (F.A.S. 560)
STA. 308+62.00 TO 309+77.00 LT

EXIST. CURVE 304
PI STA. = 310+32.75
 $\Delta = 89^\circ 50' 12''$ (RT)
D = 10° 51' 26"
R = 527.72'
T = 526.21'
L = 827.43'
E = 217.53'
e = -----
T.R. = -----
S.E. RUN = -----
P.C. STA. = 305+06.54
P.T. STA. = 313+33.97

PAVEMENT MARKING LEGEND

(PAINT)

Ⓐ PAVEMENT MARKING - LINE - 5" WHITE (SOLID)

IL 10

•D-6 SHLDR RUMBLE STRIPS 2008-5

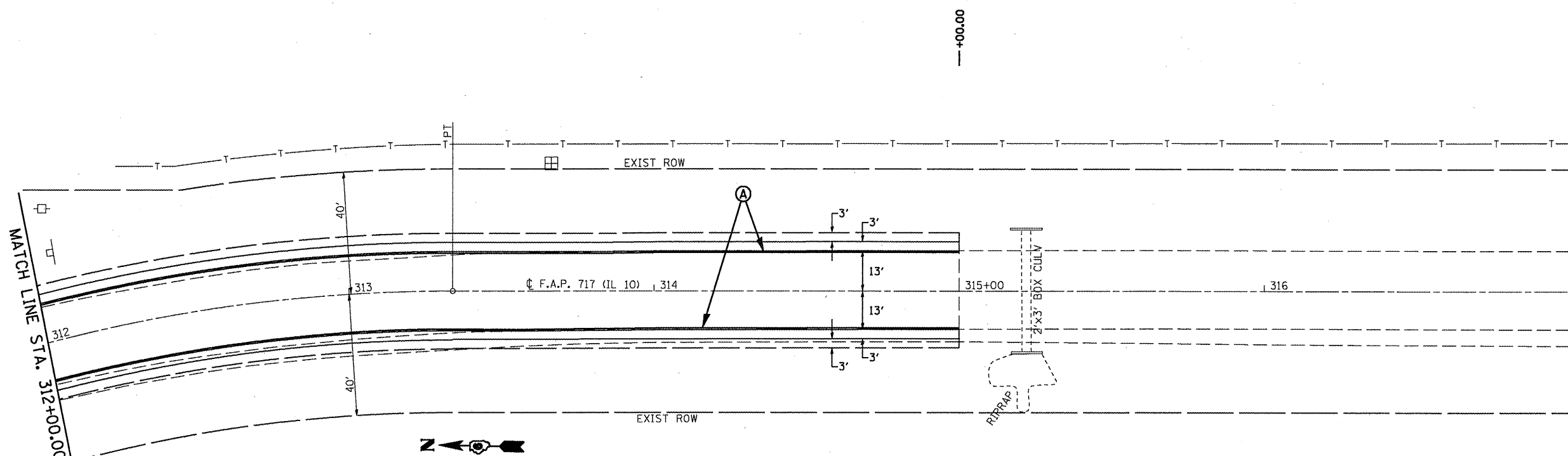
FILE NAME =	USER NAME = coxjw	DESIGNED - JWC	REVISED -
ct:\projects\d672b94\cadsheets\d672b94-11\pml.dgn		DRAWN - JWC	REVISED -
PLOT SCALE = 48.0000' / IN.	CHECKED - RSC	REVISED -	
PLOT DATE = Mar-14-2008 04:15:05PM	DATE - 02/20/08	REVISED -	

**STATE OF ILLINOIS
DEPARTMENT OF TRANSPORTATION**

PAVEMENT MARKING DETAILS

SCALE: 20 SHEET NO. 2 OF 3 SHEETS STA. 306+00.00 TO STA. 312+00.00

F.A.P. RTE.	SECTION	COUNTY	TOTAL SHEETS	SHEET NO.
717	*	LOGAN	12	10
CONTRACT NO. 72B94				
FED. ROAD DIST. NO. ILLINOIS FED. AID PROJECT				

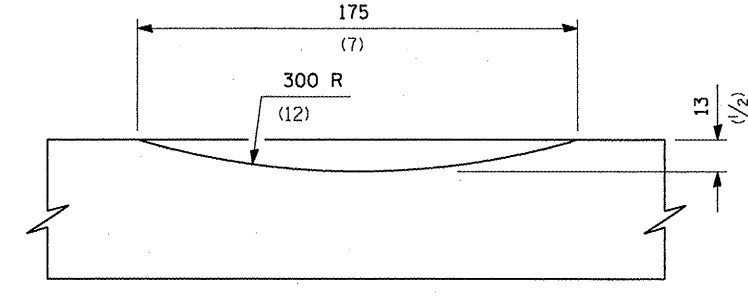
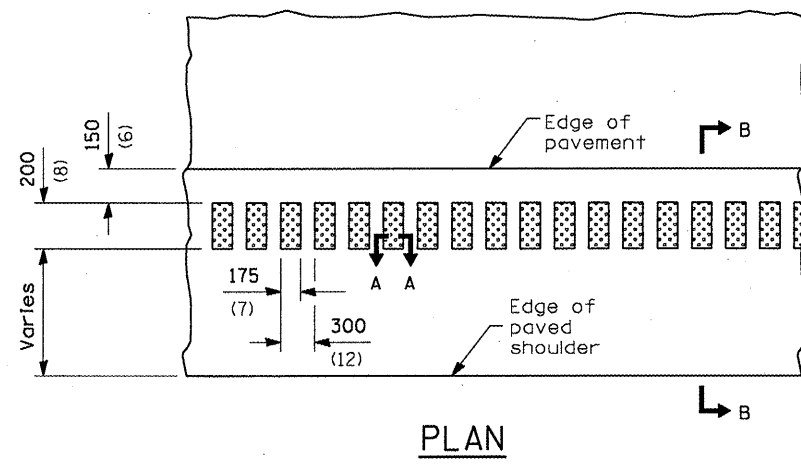


PAVEMENT MARKING LEGEND	
<i>(PAINT)</i>	
Ⓐ	PAVEMENT MARKING - LINE - 5" WHITE (SOLID)

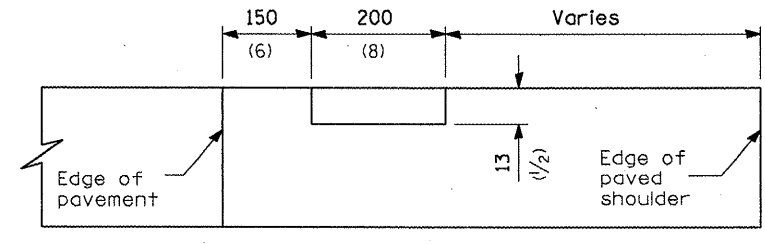
IL 10

•D-6 SHLDR RUMBLE STRIPS 2008-5

FILE NAME =	USER NAME = coxjw	DESIGNED - JWC	REVISED -	STATE OF ILLINOIS DEPARTMENT OF TRANSPORTATION	PAVEMENT MARKING DETAILS			F.A.P. RTE. 717	SECTION •	COUNTY LOGAN	TOTAL SHEETS 12	SHEET NO. 11
ca\projects\672b94\cadsheets\672b94\pml.dgn		DRAWN - JWC	REVISED -		SCALE: 20	SHEET NO. 3 OF 3 SHEETS	STA. 312+00.00 TO STA. 315+00.00	CONTRACT NO. 72B94				
		CHECKED - RSC	REVISED -									
		DATE - 02/20/08	REVISED -									
PLOT SCALE = 40.0000' / IN.		PLOT DATE = Mar-14-2008 04:15:06PM		FED. ROAD DIST. NO. ILLINOIS FED. AID PROJECT								

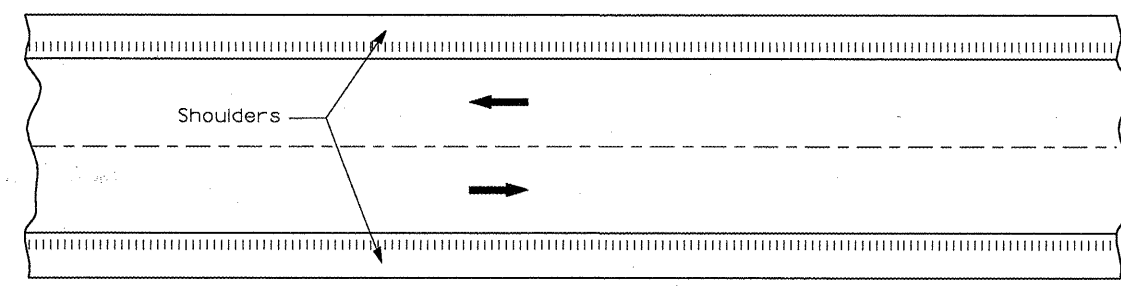
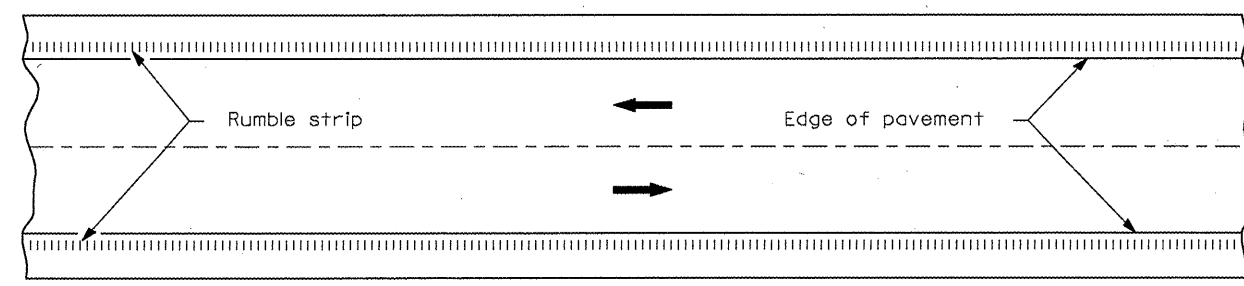


SECTION A-A

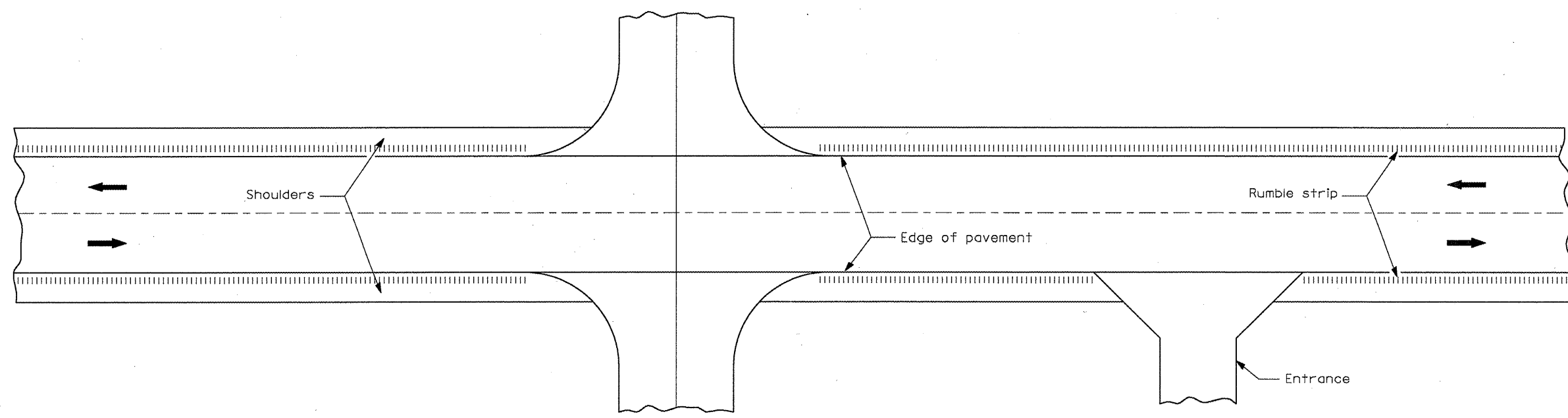


SECTION B-B

PLAN



HALF PLAN
TYPICAL APPLICATION FOR RURAL AREAS



HALF PLAN
TYPICAL APPLICATION AT SIDEROADS AND ENTRANCES

FILE NAME =	USER NAME = cox,j	DESIGNED - JWC	REVISED -	STATE OF ILLINOIS DEPARTMENT OF TRANSPORTATION	RUMBLE STRIP DETAIL	F.A.P. RTE.	SECTION	COUNTY	TOTAL SHEETS	SHEET NO.
C:\Projects\d672b94\cadd\sheet\d672b94-shd-detailed.dgn	DRAWN - JWC	REVISED -	717				LOGAN	12	12	
PLOT SCALE = 42.5000' / IN.	CHECKED - RSC	REVISED -	CONTRACT NO. 72B94							
PLOT DATE = Mar-14-2009 04:09:26PM	DATE - 06/08/07	REVISED -	FED. ROAD DIST. NO. ILLINOIS FED. AID PROJECT							
					SCALE: NTS	SHEET NO. 1 OF 1 SHEETS		STA. 303+00.00 TO STA. 315+00.00		

•D-6 SHLDR RUMBLE STRIPS 2008-5