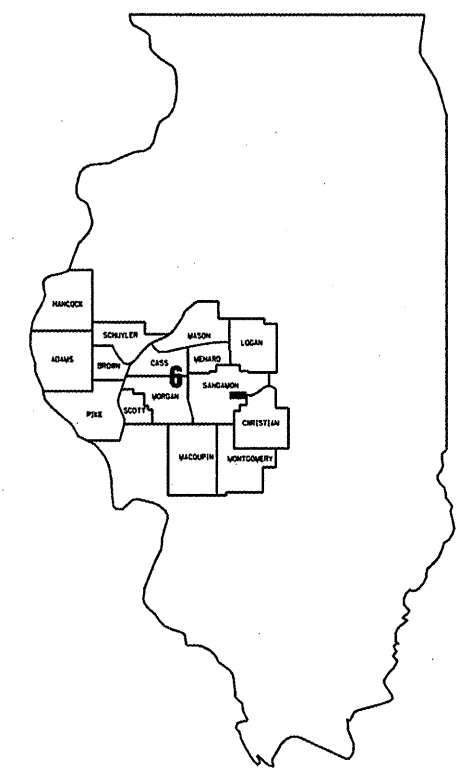


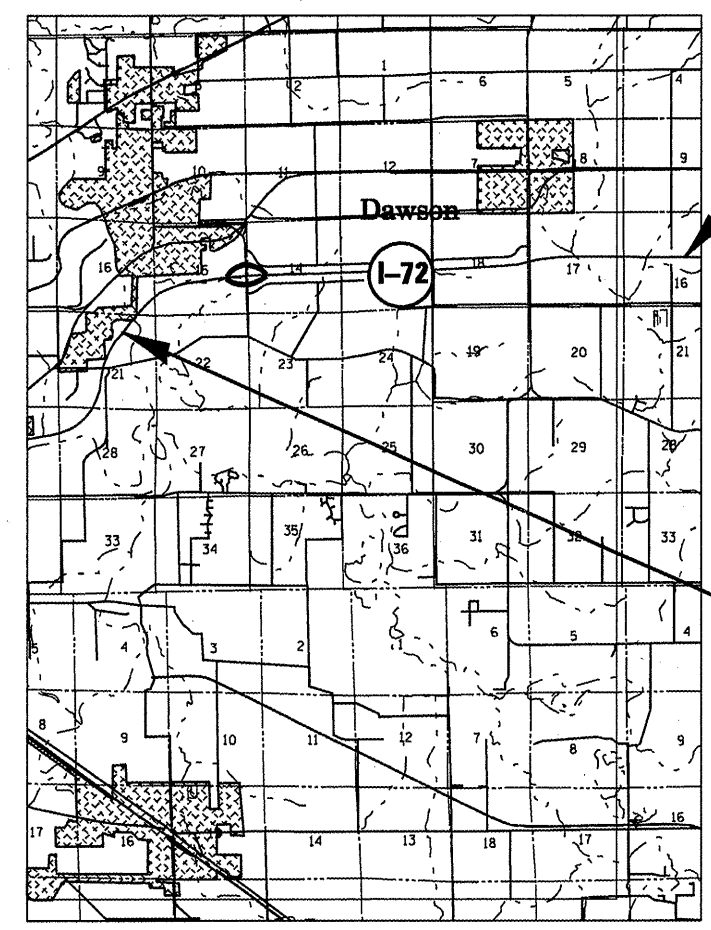
FOR INDEX OF SHEETS AND HIGHWAY
STANDARDS, SEE SHEET 2.

STATE OF ILLINOIS
DEPARTMENT OF TRANSPORTATION
DIVISION OF HIGHWAYS

**PLANS FOR PROPOSED
CONTRACT MAINTENANCE**
FAI ROUTE 72 (I-72)
SECTION D-6 INTERMITTENT RS 2009- 2
SANGAMON COUNTY
C96-080-08 / D96-080-08



LOCATION OF SECTION INDICATED THUS: ■



END PROJECT
STA. 181+926.82
(E.B. LANES ONLY)

OMISSION
STA. 172+285.34
TO 180+700

BEGIN PROJECT
STA. 172+200
(E.B. LANES ONLY)



NET LENGTH OF SEC 31,569.12 FT=5.979 MILE

J. U. L. I. E.
JOINT UTILITY LOCATION INFORMATION FOR EXCAVATION
1-800-892-0123

PLANS & CONTRACT TECHNICIAN: TIMOTHY SHARP
PHONE: (217) 782-7743

CONTRACT NO. 72C08

STATE OF ILLINOIS
DEPARTMENT OF TRANSPORTATION
DIVISION OF HIGHWAYS

SUBMITTED April 7 2008

Christine M. Reed
DEPUTY DIRECTOR OF HIGHWAYS, REGION FOUR ENGINEER

May 9 2008

Eric E. Hamm
Interim ENGINEER OF DESIGN AND ENVIRONMENT

May 9 2008

Christine M. Reed
DIRECTOR, DIVISION OF HIGHWAYS

INDEX

- 1 COVER
- 2 INDEX/STANDARDS/SIGNATURES
- 3-4 QUANTITIES
- 5 TYPICAL SECTIONS
- 6 SCHEDULES
- 7 BUTT JOINT DETAIL

STANDARDS

- 442001-04
- 701101-01
- 701106-01
- 701400-02
- 701406-04
- 701426-02
- 701901
- 780001-01
- 781001-02

STATE OF ILLINOIS DEPARTMENT OF TRANSPORTATION DIVISION OF HIGHWAYS DISTRICT 6
EXAMINED <u>April 4</u> 20 <u>08</u> <u>Doni J. Hoass</u> ENGINEER OF OPERATIONS
EXAMINED <u>March 26</u> 20 <u>08</u> <u>WTF</u> ENGINEER OF PROGRAM IMPLEMENTATION
EXAMINED <u>MAR 23</u> 20 <u>08</u> <u>WTF</u> ENGINEER OF PROGRAM DEVELOPMENT

NOTE: MILLINGS FROM THIS PROJECT ARE TO BE DELIVERED TO
THE I.D.O.T. YARD - 5204 OLD RT 36 - RIVERTON, IL.
CONTACT PERSON -MICHAEL McDERMOTT - (217)836-4735

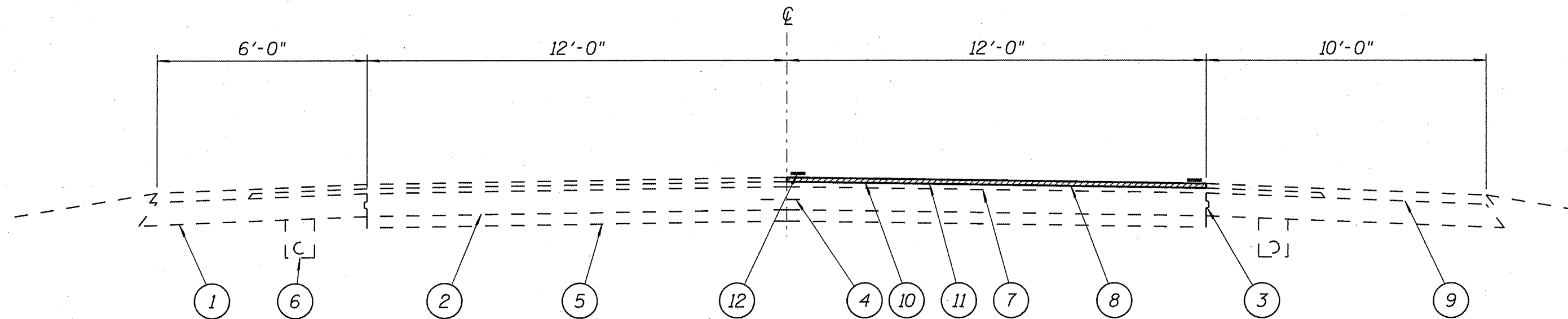
INDEX/STANDARDS/SIGNATURES
FAI 72 (I-72)
SECTION D6 INTERMITTENT RS 2009-02
SANGAMON COUNTY

S U M M A R Y O F Q U A N T I T I E S

CODE NO.	ITEM	UNIT	100% STATE
			I 000
			TOTAL QTY
40600200	BITUMINOUS MATERIALS (PRIME COAT)	TON	2.2
40603575	POLYMERIZED HOT-MIX ASPHALT SURFACE COURSE, MIX "E" N 105	TON	483
44000155	HOT-MIX ASPHALT SURFACE REMOVAL, 1 1/2"	SQ YD	5,740
44213000	PATCHING REINFORCEMENT	SQ YD	71
44213200	SAW CUTS	FOOT	351
67100100	MOBILIZATION	L SUM	1
70100700	TRAFFIC CONTROL AND PROTECTION, STANDARD 701406	L SUM	1
70103815	TRAFFIC CONTROL SURVEILLANCE	CAL DA	3
70106800	CHANGEABLE MESSAGE SIGN	CAL MO	0.5
70300100	SHORT-TERM PAVEMENT MARKING	FOOT	602
70301000	WORK ZONE PAVEMENT MARKING REMOVAL	SQ FT	206

QUANTITIES
FAI 72 (I-72)
SECTION D-6 INTERMITTENT RS 2009-02
SANGAMON COUNTY

Rev.



STA. 172+200 TO 172+285.34
STA. 180+700 TO 181+926.82

L E G E N D

- 1 - EXIST. STABILIZED SHOULDERS 8"
- 2 - EXIST. P.C.C. PAVEMENT 8"
- 3 - EXIST. KEYWAY
- 4 - EXIST. LONGITUDINAL JOINT
- 5 - EXIST. STABILIZED SUB-BASE 4"
- 6 - EXIST. PIPE UNDERDRAINS
- 7 - EXIST. BIT. BINDER. CRSE., MIX B CLASS I 1³/₄"
- 8 - EXIST. BIT. SURF. CRSE., MIX D, CLASS I 1¹/₂"
- 9 - EXIST. BIT. SHOULDER
- 10 - PROP. POLYMERIZED HOT-MIX ASPHALT SURFACE COURSE, MIX E, N105 1¹/₂"
- 11 - PROP. HOT-MIX ASPHALT SURFACE REMOVAL 1¹/₂"
- 12 - PROP. URETHANE PAVEMENT MARKING - LINE 5"

TYPICAL SECTION
FAI 72 (I-72)
SECTION D-6 INTERMITTENT RS 2009-02
SANGAMON COUNTY

PAVEMENT MARKING SCHEDULE

STATION	TYPE	URETHANE PAV'T MRKG
		LINE 5"
		WHITE
RT 172+200 TO 172+285.34	EDGE LINE	280 FT
RT 180+700 TO 181+926.82	EDGE LINE	4,025 FT
LT 172+200 TO 172+285.34	SKIP DASH	70 FT
LT 180+700 TO 181+926.82	SKIP DASH	1,010 FT
TOTALS		5,385 FT

NOTES:

STATIONS ARE APPROXIMATE.

MIXTURE REQUIREMENTS

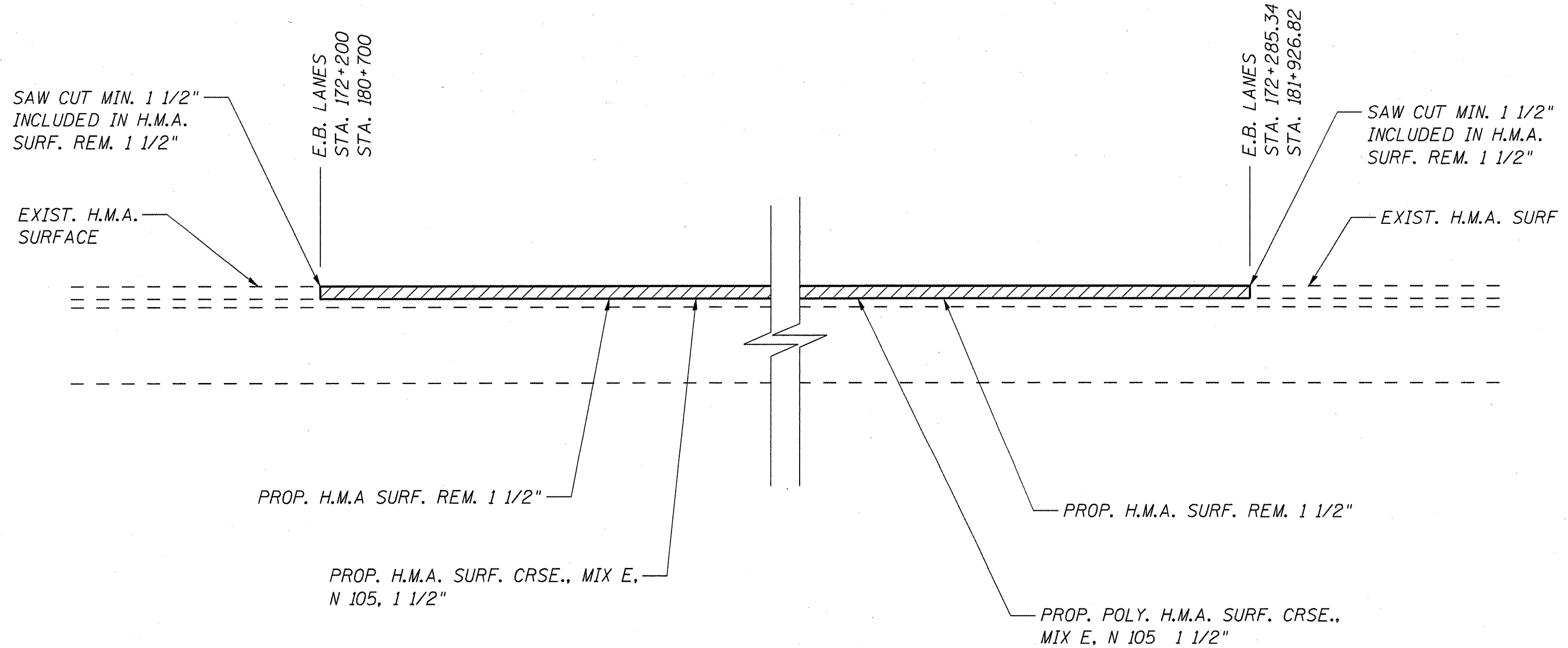
THE FOLLOWING MIXTURE REQUIREMENTS
ARE APPLICABLE FOR THIS PROJECT

MIXTURE USE(S):	POLY H.M.A. S.C., MIX E, N50
AC/PG	SBS PG 70-22
DESIGN AIR VOIDS:	4.0% @ N DESIGN = 105
MIXTURE COMP:	IL 9.5 OR 12.5
FRICTION AGG:	MIX "E"

PATCHING SCHEDULE

STATION	SIZE	STATION	SIZE
181+321	35 x 12	181+684	6 x 12
181+712	6 x 12	181+714	6 x 12

NOTE: ALL PATCHES ARE IN THE EAST
BOUND DRIVING LANE



BUTT JOINT
FAI 72 (1-72)
SECTION D6 INTERMITTENT RS 2009-02
SANGAMON COUNTY