

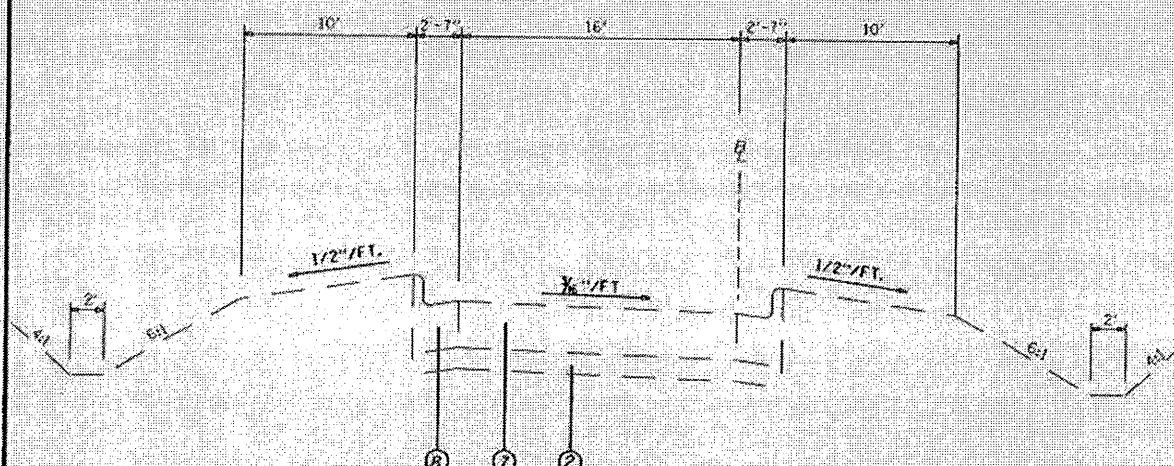
WB - SUPERELEVATION

STA. 1113+67.50 TO STA. 1138+22.60
 STA. 1144+59.17 TO STA. 1153+80.85
 STA. 1376+42.89 TO STA. 1378+55.50
 STA. 1384+40.77 TO STA. 1475+80.00

EB - SUPERELEVATION

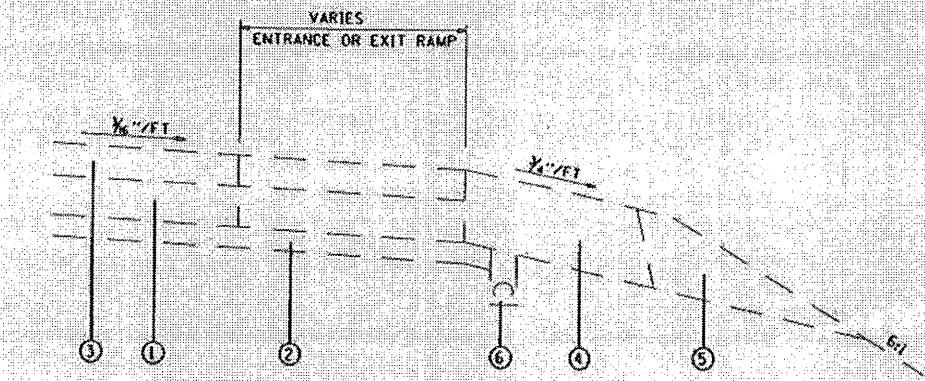
STA. 1101+99.78 TO STA. 1108+30.33
 STA. 1114+62.10 TO STA. 1136+87.50
 STA. 1248+45.54 TO STA. 1153+80.85
 STA. 1386+32.37 TO STA. 1475+80.00

* Median width varies from STA 1410+00 to STA 1415+00



REST AREA RAMPS

EASTBOUND	WESTBOUND
STA. 15+87.78 TO STA. 25+60.73	STA. 15+83.86 TO STA. 25+12.02
STA. 31+44.69 TO STA. 39+73.11	STA. 30+95.98 TO STA. 38+97.43



ENTRANCE AND EXIT RAMPS

EASTBOUND	WESTBOUND
STA. 1108+30.33 TO STA. 1114+62.10	STA. 1101+99.78 TO STA. 1113+67.50
STA. 1136+87.50 TO STA. 1148+45.54	STA. 1138+22.60 TO STA. 1144+59.17
STA. 1207+75.63 TO STA. 1214+30.24	STA. 1228+96.44 TO STA. 1243+07.48
STA. 1233+37.75 TO STA. 1247+48.74	STA. 1261+67.94 TO STA. 1268+31.60
STA. 1345+79.31 TO STA. 1351+74.80	STA. 1345+12.21 TO STA. 1356+56.00
STA. 1374+77.20 TO STA. 1379+59.33	STA. 1378+55.50 TO STA. 1380+27.93
STA. 1382+34.40 TO STA. 1386+32.37	STA. 1383+02.78 TO STA. 1384+40.77

- LEGEND**
- ① EXISTING C.R.P.C.C. PAVEMENT 8"
 - ② EXISTING SUB-BASE 4"
 - ③ EXISTING RESURFACING 6-1/2" OR 8-1/4"
 - ④ EXISTING BITUMINOUS SHOULDER
 - ⑤ EXISTING AGGREGATE SHOULDER, TYPE B
 - ⑥ EXISTING PIPE UNDERDRAINS
 - ⑦ EXISTING JR PCC Pavement 9 1/2"
 - ⑧ EXISTING CONCRETE CURB & GUTTER COMB., B 6.24

FILE NAME = #110104	USER NAME = #0587K	DESIGNED - ---	REVISED - ---	STATE OF ILLINOIS DEPARTMENT OF TRANSPORTATION	TYPICALS		* ST. CLAIR & CLINTON COUNTIES			
		DRAWN - ---	REVISED - ---		P.A. DATE	SECTION	COUNTY	TOTAL SHEETS	SHEET NO.	
		CHECKED - ---	REVISED - ---		1:8.8	82-1B-9.10H		11	5	
		DATE	REVISED		SCALE: 50.1" = 1"'	SHEET NO. OF SHEETS	STA. TO STA.	CONTRACT NO. 76R46		
							ILLINOIS FED. AID PROJECT			