





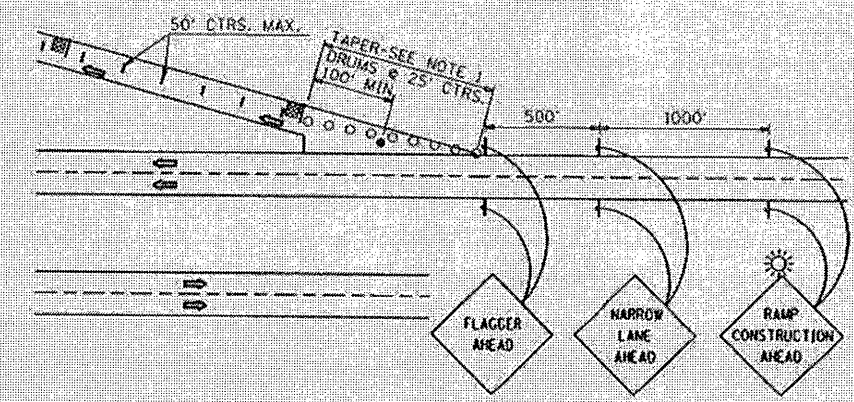




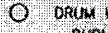

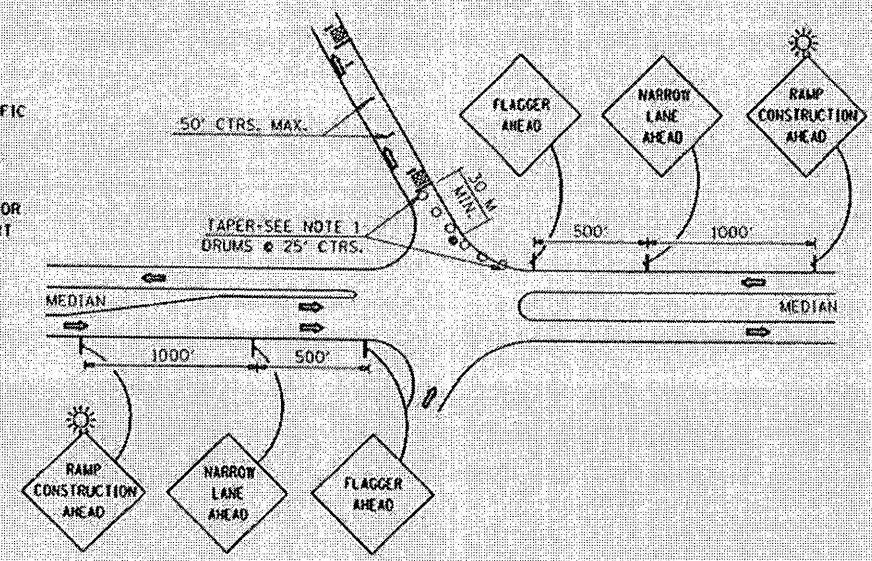


- LEGEND**
-  PATCH
 -  FLAGGER WITH TRAFFIC CONTROL SIGN
 -  BARRICADE OR DRUM
 -  SIGN ON PORTABLE OR PERMANENT SUPPORT
 -  DRUM WITH STEADY BURNING LIGHT
 -  FLASHING LIGHTS

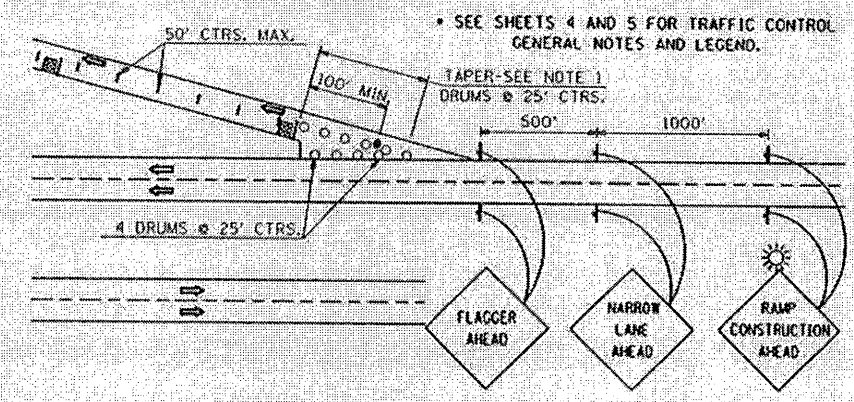


TYPICAL EXIT RAMP APPLICATION #1




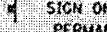


- LEGEND**
-  PATCH
 -  FLAGGER WITH TRAFFIC CONTROL SIGN
 -  BARRICADE OR DRUM
 -  SIGN ON PORTABLE OR PERMANENT SUPPORT
 -  DRUM WITH STEADY BURNING LIGHT
 -  FLASHING LIGHTS

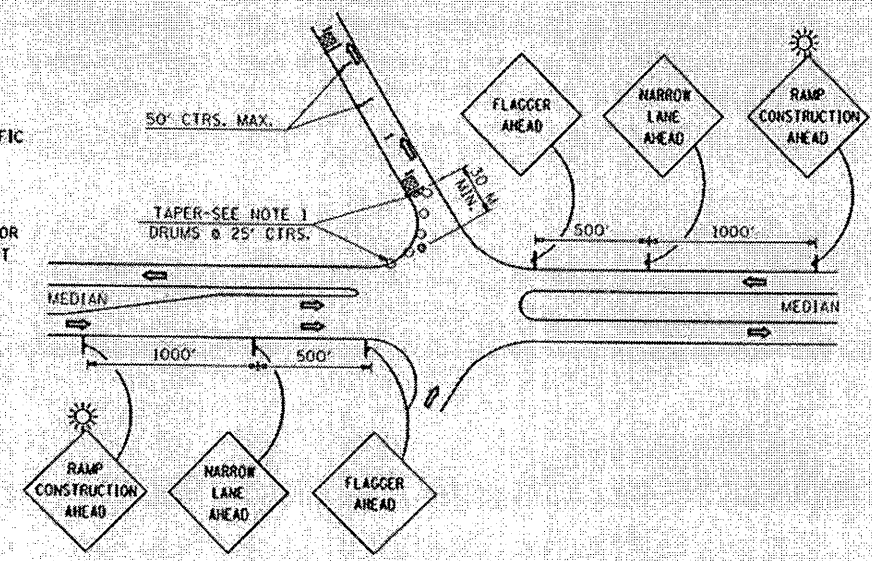


TYPICAL ENTRANCE RAMP APPLICATION #3
SEE SHEETS 4 AND 5 FOR TRAFFIC CONTROL GENERAL NOTES AND LEGEND



TYPICAL EXIT RAMP APPLICATION #2

- LEGEND**
-  PATCH
 -  FLAGGER WITH TRAFFIC CONTROL SIGN
 -  BARRICADE OR DRUM
 -  SIGN ON PORTABLE OR PERMANENT SUPPORT
 -  DRUM WITH STEADY BURNING LIGHT
 -  FLASHING LIGHTS



TYPICAL ENTRANCE RAMP APPLICATION #4
SEE SHEETS 4 AND 5 FOR TRAFFIC CONTROL GENERAL NOTES AND LEGEND

DESIGNED	---	REVISED	---
DRAWN	---	REVISED	---
CHECKED	---	REVISED	---
DATE	---	REVISED	---

STATE OF ILLINOIS
DEPARTMENT OF TRANSPORTATION

TRAFFIC CONTROL AND
PROTECTION SPECIAL

ST. CLAIR & CLINTON COUNTIES

F.A. RTE.	SECTION	COUNTY	TOTAL SHEETS	SHEET NO.
1:64	82-18.3.10H		31	11
SCALE: 50' = 1"			CONTRACT NO. 76B46	
FED. ROAD DIST. NO. ILLINOIS FED. AID PROJECT				

SHEET NO. OF SHEETS STA. TO STA.