

F.A.P. RTE.	SECTION	COUNTY	TOTAL SHEETS	SHEET NO.
788	27T-7	MADISON	9	1
FED. ROAD DIST. NO.		ILLINOIS	CONTRACT NO. 76B51	

INDEX OF SHEETS

- 1 COVER SHEET
- 2 GENERAL NOTES AND COMMITMENTS
- 3 SUMMARY OF QUANTITIES
- 4 SITE PLAN
- 5 WELL ENCLOSURE BOX AND WELL HEAD EXTENSION
- 6 DETAILS - PIEZOMETER & CONCRETE BOLLARD
- 7 ELECTRICAL PLAN SHEET
- 8 WELL ENCLOSURE ELECTRICAL DETAILS
- 9 DETAILS FOR EXISTING WELL ENCLOSURE BOXES

STANDARDS

- 000001-05
- 280001-04
- 602701-01
- 701101-01
- 701106-01
- 701601-05
- 701901

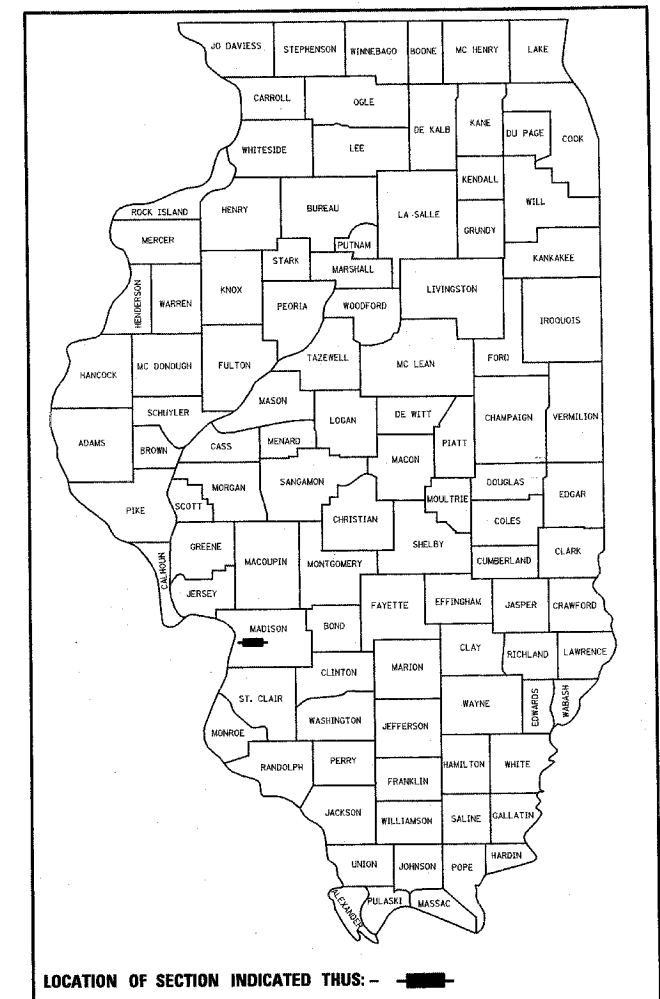
STATE OF ILLINOIS
DEPARTMENT OF TRANSPORTATION
DIVISION OF HIGHWAYS
**PROPOSED
HIGHWAY PLANS**

FAP ROUTE 788 (IL 003)
SECTION 27T-7

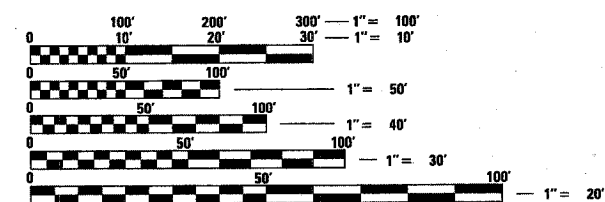
MADISON COUNTY

PUMP REPLACEMENT IN VENICE, ILLINOIS
C-98-015-08

D-98-023-08

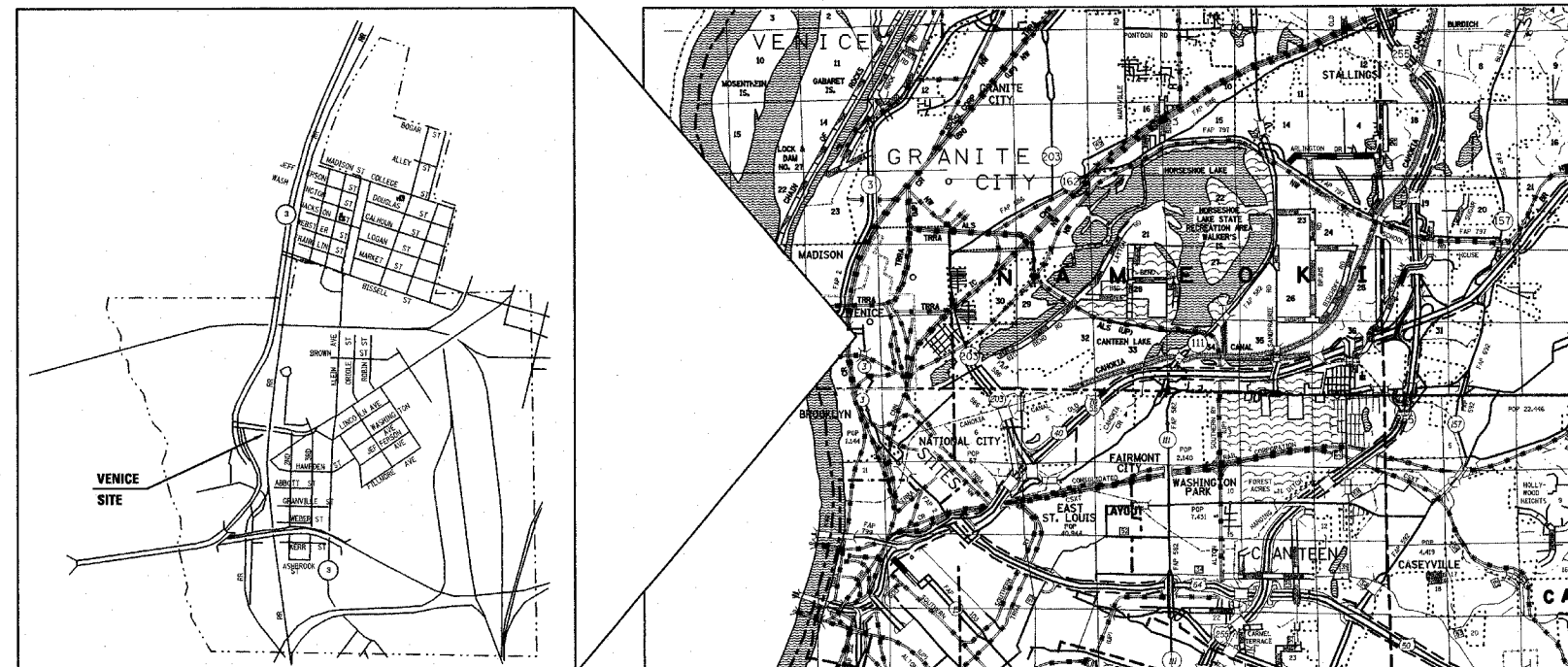


ADT	
2007	6000 (ACTUAL)
2008	6100 (ESTIMATED)
SU	9.2%
MU	7.5%

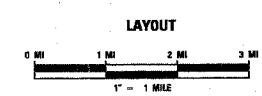


FULL SIZE PLANS HAVE BEEN PREPARED USING STANDARD ENGINEERING SCALES. REDUCED SIZED PLANS WILL NOT CONFORM TO STANDARD SCALES. IN MAKING MEASUREMENTS ON REDUCED PLANS, THE ABOVE SCALES MAY BE USED.

J.U.L.I.E.
JOINT UTILITY LOCATION INFORMATION FOR EXCAVATION
1-800-892-0123
OR 811



GROSS LENGTH = 500'
NET LENGTH = 500'



PROJECT ENGINEER: PATTI LEBEAU (346) 346-3179
PROJECT MANAGER: BHARAT PATEL (618) 346-3190

CONTRACT NO. 76B51

STATE OF ILLINOIS
DEPARTMENT OF TRANSPORTATION
DIVISION OF HIGHWAYS

SUBMITTED March 21 2008

Mary C. Janie
DEPUTY DIRECTOR OF HIGHWAYS, REGION ENGINEER

May 9, 2008
Eric E. Harn
INTERIM ENGINEER OF DESIGN AND ENVIRONMENT

May 9, 2008
Christine M. Reed
DIRECTOR OF HIGHWAYS, CHIEF ENGINEER

**PRINTED BY THE AUTHORITY
OF THE STATE OF ILLINOIS**