

PLAN

LEGEND

- ① 16" 304L SS CASING EXTENSION, FLANGED (SEE NOTE 2)
- ② 6" 304L SS PIPE EXTENSION, FLANGED
- ③ AIR/VAC VALVE WITH ISOLATING BALL VALVE
- ④ REUSE EXISTING WELL HEAD
- ⑤ 6" SS COUPLING 10" LENGTH
- ⑥ 6" SWINGFLEX CHECK VALVE
- ⑦ 6" KNIFE GATE VALVE (TILT AS REQUIRED)
- ⑧ 6" SS PIPE & FLANGE x PE
- ⑨ 6" 304L SS PIPE & FLANGES
- ⑩ 1" 304L SS NIPPLE WELDED TO 6" SS PIPE
- ⑪ 6" 304L SS 45° ELBOW
- ⑫ EXISTING 6" HDPE FORCE MAIN BRANCH PIPE
- ⑬ 6" SS REPAIR CLAMP, 24" LENGTH

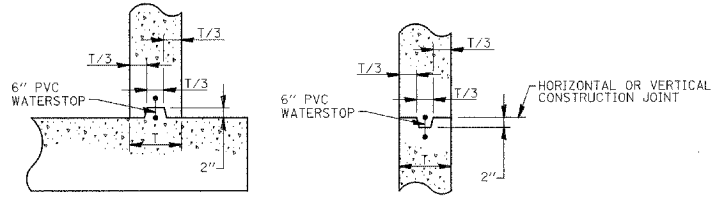
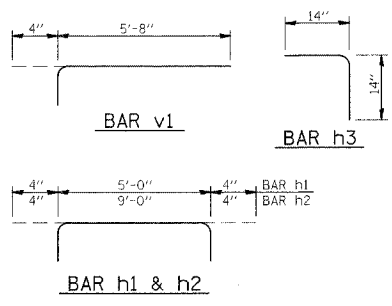
- NOTES:**
- 1. BOLTS, NUTS & WASHERS SHALL BE 304L SS.
 - 2. CASING EXTENSION FLANGE SHALL MATCH EXISTING CASING FLANGE BOLT HOLE PATTERN.

TABLE 1
WELL MODIFICATIONS AND NEW WELL ENCLOSURE BOX

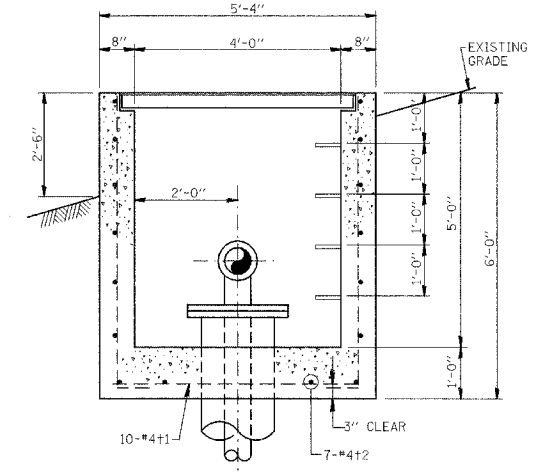
WELL NO.	EXTENSION OF CASING AND DISCHARGE PIPE "B"	WELL HEAD EXTENSION	WELL ENCLOSURE BOX
W-1	26"	1	1
W-2	18"	1	1
W-3	23"	1	1
W-4	18"	1	1
W-5	33"	1	1
W-6A	43"	1	1
W-7	58"	1	1
TOTAL		7	7

WELL ENCLOSURE BOX BILL OF MATERIALS

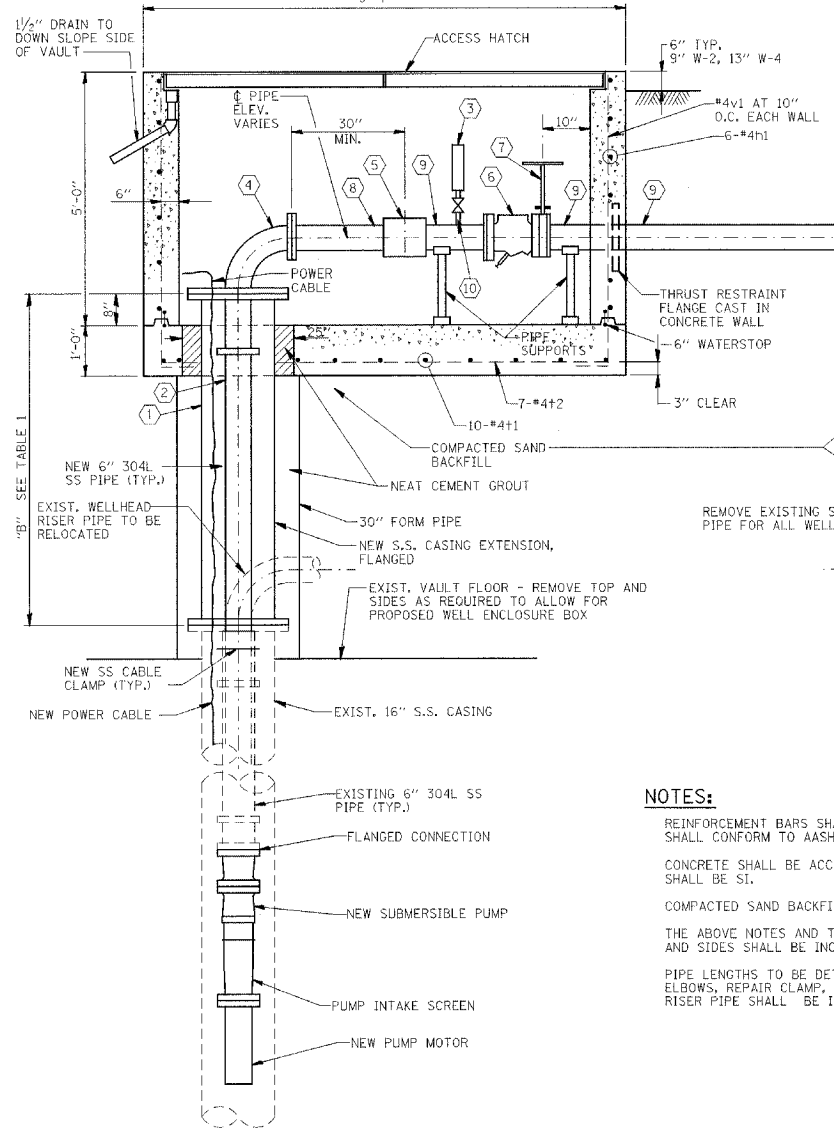
BAR NO.	SIZE	LENGTH	REINFORCEMENT BARS	CONCRETE STRUCTURES
v1	3/4"	4	375	5.25
h1	1/2"	4		
h2	1/2"	4		
h3	1/2"	4		
t1	1/2"	4		
t2	1/2"	4		



KEYWAY DETAILS

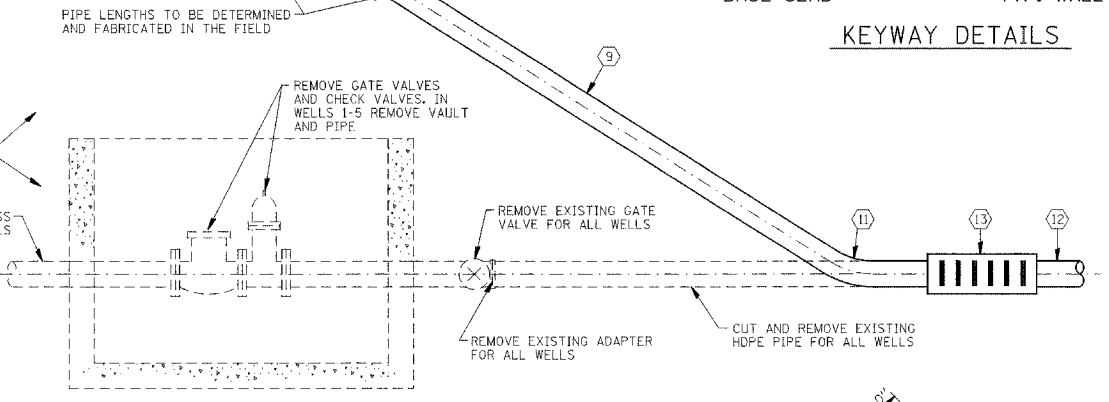


SECTION A-A

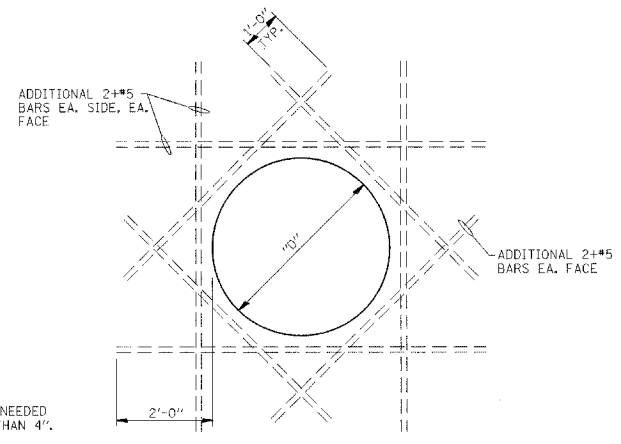


ELEVATION

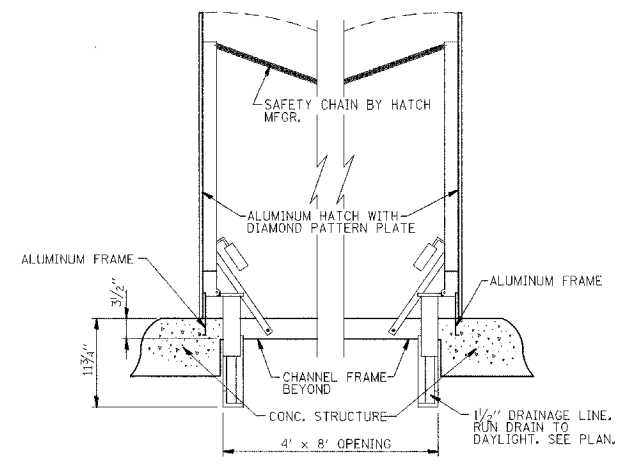
- NOTES:**
- REINFORCEMENT BARS SHALL BE ACCORDING TO SECTION 508 AND SHALL CONFORM TO AASHTO M-31, M-42, OR M-53 GRADE 60.
 - CONCRETE SHALL BE ACCORDING TO SECTION 503 AND THE CLASS SHALL BE S1.
 - COMPACTED SAND BACKFILL SHALL BE ACCORDING TO SECTION 207.
 - THE ABOVE NOTES AND THE REMOVAL OF THE EXISTING VAULTS TOPS AND SIDES SHALL BE INCLUDED IN THE PAY ITEM WELL ENCLOSURE BOX.
 - PIPE LENGTHS TO BE DETERMINED IN THE FIELD BY THE CONTRACTOR. ELBOWS, REPAIR CLAMP, PIPE SUPPORTS, AND RELOCATED WELL HEAD RISER PIPE SHALL BE INCLUDED IN THE PAY ITEM WELL HEAD EXTENSION.



* NO ADDITIONAL REINFORCEMENT NEEDED FOR PIPE PENETRATIONS LESS THAN 4"



TYPICAL ADDITIONAL REINFORCEMENT AROUND PIPE PENETRATIONS



ACCESS HATCH DETAIL