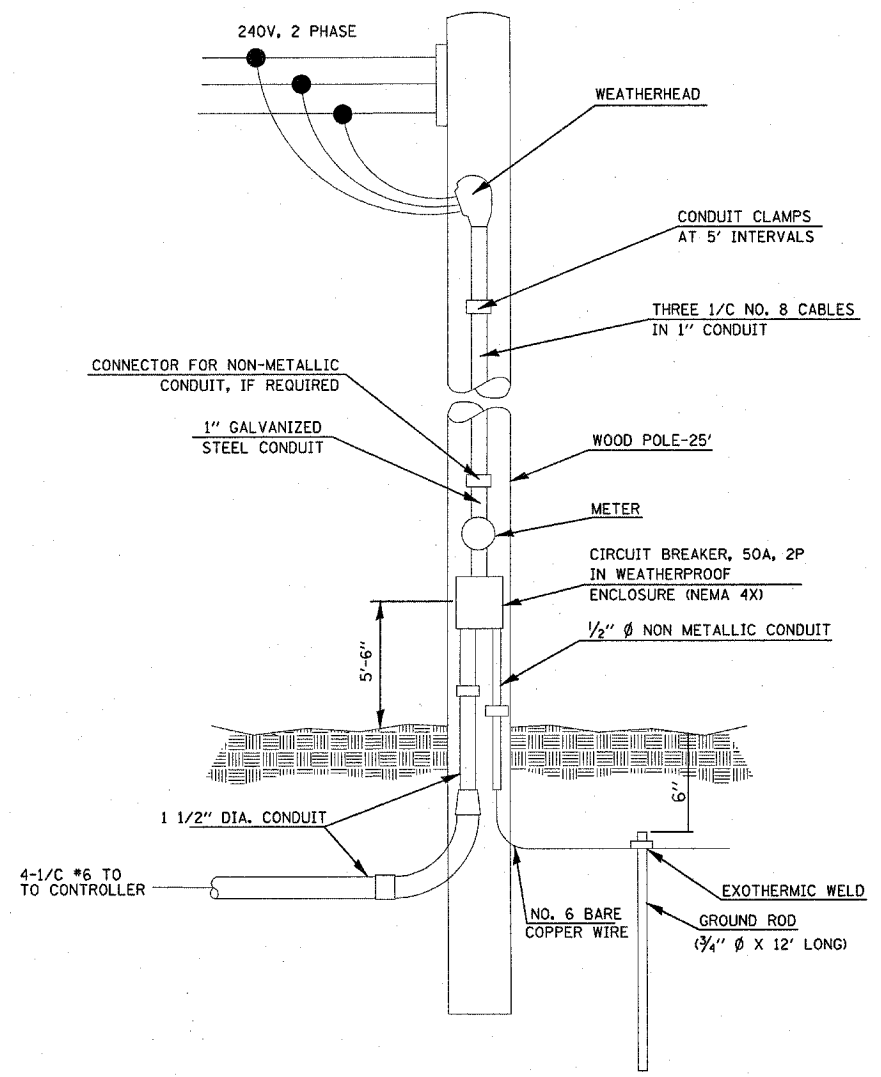


Camera Lowering Device for Pole Mounting Multi-Function Surveillance Cameras  
CLDMG2-HYP-050-ST-D



SERVICE INSTALLATION, TYPE A  
NOT TO SCALE

FILE NAME =	USER NAME = prestonme	DESIGNED -	REVISED -
dt:\projects\ed02608\electrical\itapl02608.dgn		DRAWN -	REVISED -
	PLOT SCALE = 50.0000' / 1\"/>		
	PLOT DATE = 4/17/2008	DATE -	REVISED -

STATE OF ILLINOIS  
DEPARTMENT OF TRANSPORTATION

POLE MOUNTED CCTV DETAIL WITH CAMERA LOWERING DEVICE  
AND SERVICE INSTALLATION DETAILS

SCALE: \_\_\_\_\_ SHEET NO. \_\_\_\_ OF \_\_\_\_ SHEETS STA. \_\_\_\_\_ TO STA. \_\_\_\_\_

F.A.I. RTE.	SECTION	COUNTY	TOTAL SHEETS	SHEET NO.
•255/270	DIST 8 ITS 2009-1	MADISON	28	12
FED. ROAD DIST. NO. ILLINOIS FED. AID PROJECT			CONTRACT NO. 76B53	