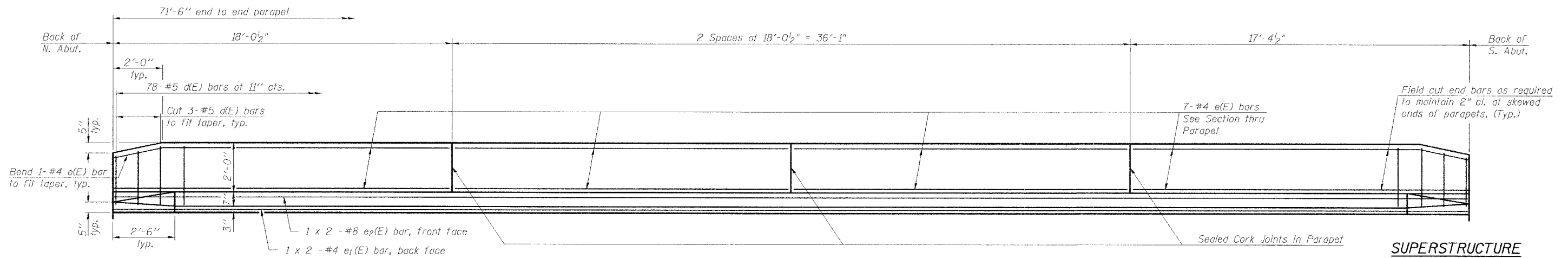


STATE OF ILLINOIS
DEPARTMENT OF TRANSPORTATION

ROUTE NO. F.A.S. 2826	SECTION 110B-1	COUNTY JEFFERSON	TOTAL SHEETS 44	SHEET NO. 18	SHEET NO. 7 16 SHEETS
FED. ROAD DIST. NO. 7		ILLINOIS	FED. AID PROJECT		

Contract 78013

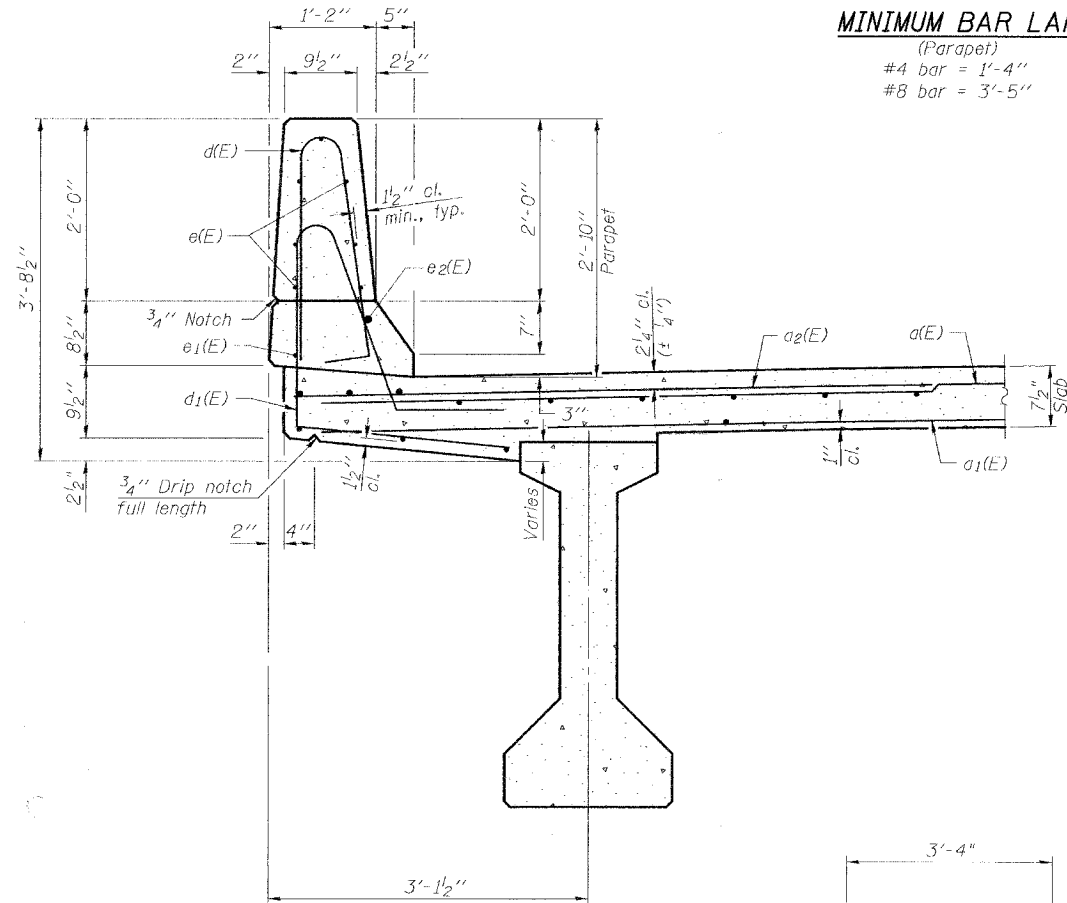


INSIDE ELEVATION OF PARAPET

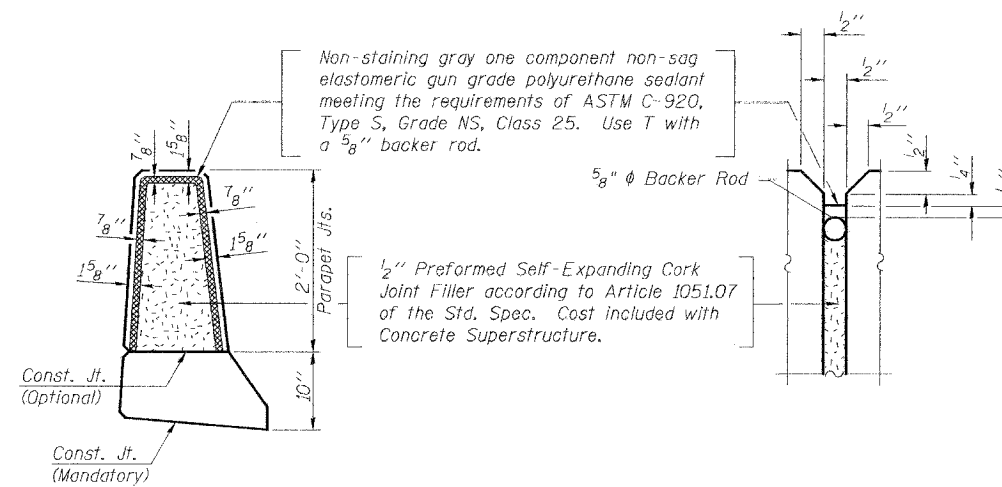
Dim. along curb at inside base of Parapet.
East Parapet Shown / West Similar

MINIMUM BAR LAP

(Parapet)
#4 bar = 1'-4"
#8 bar = 3'-5"



SECTION THRU PARAPET



PARAPET JOINT DETAILS

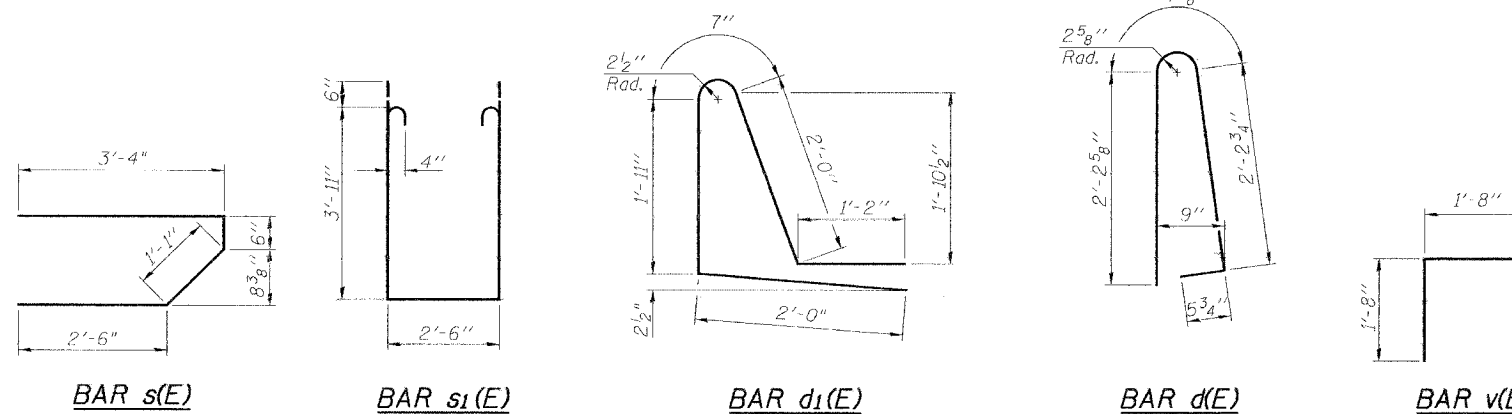
**SUPERSTRUCTURE
BILL OF MATERIAL**

Bar	No.	Size	Length	Shape
a(E)	115	#5	37'-11"	—
a1(E)	86	#5	37'-11"	—
a2(E)	114	#6	6'-6"	—
a3(E)	4	#5	42'-3"	—
b(E)	84	#5	36'-5"	—
b1(E)	108	#5	24'-10"	—
d(E)	156	#5	5'-7"	┌
d1(E)	156	#5	7'-8"	┌
e(E)	56	#4	17'-8"	—
e1(E)	4	#4	36'-3"	—
e2(E)	4	#8	37'-4"	—
m(E)	4	#6	42'-8"	—
m1(E)	6	#6	44'-10"	—
m2(E)	24	#6	9'-10"	—
m3(E)	10	#6	5'-2"	—
m4(E)	4	#6	2'-3"	—
s(E)	72	#5	7'-5"	┘
s1(E)	62	#4	11'-4"	┘
v(E)	76	#5	3'-4"	┘
Reinforcement Bars, Epoxy Coated			Lbs.	20,930
Concrete Superstructure			Cu. Yds.	116.6

Bars indicated thus 1 x 2-#8 etc. indicates 1 line of bars with 2 lengths per line.
Work this sheet with sheets 6 and 8 of 16.

SUPERSTRUCTURE DETAILS
IL ROUTE 37 OVER LIMESTONE CREEK
F.A.S. ROUTE 2826 SECTION 110B-1
JEFFERSON COUNTY
STA. 836+80
S.N. 041-0107

DESIGNED	CMF
CHECKED	KCM
DRAWN	JLM
CHECKED	TMM



McDonough-Whitlow, P.C.
Consulting Engineers & Land Surveyors
138 East Wood Street
Hillsboro, IL 62049
Phone: 217.532.9233
Fax: 217.532.6300
PROFESSIONAL DESIGN No. 184-002754