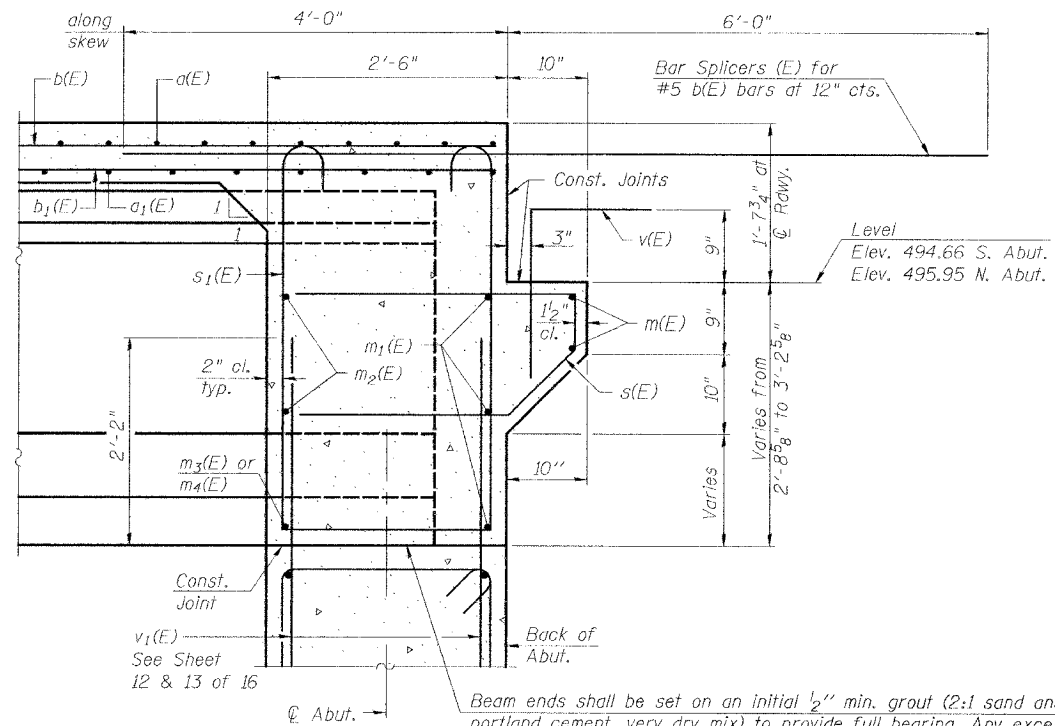


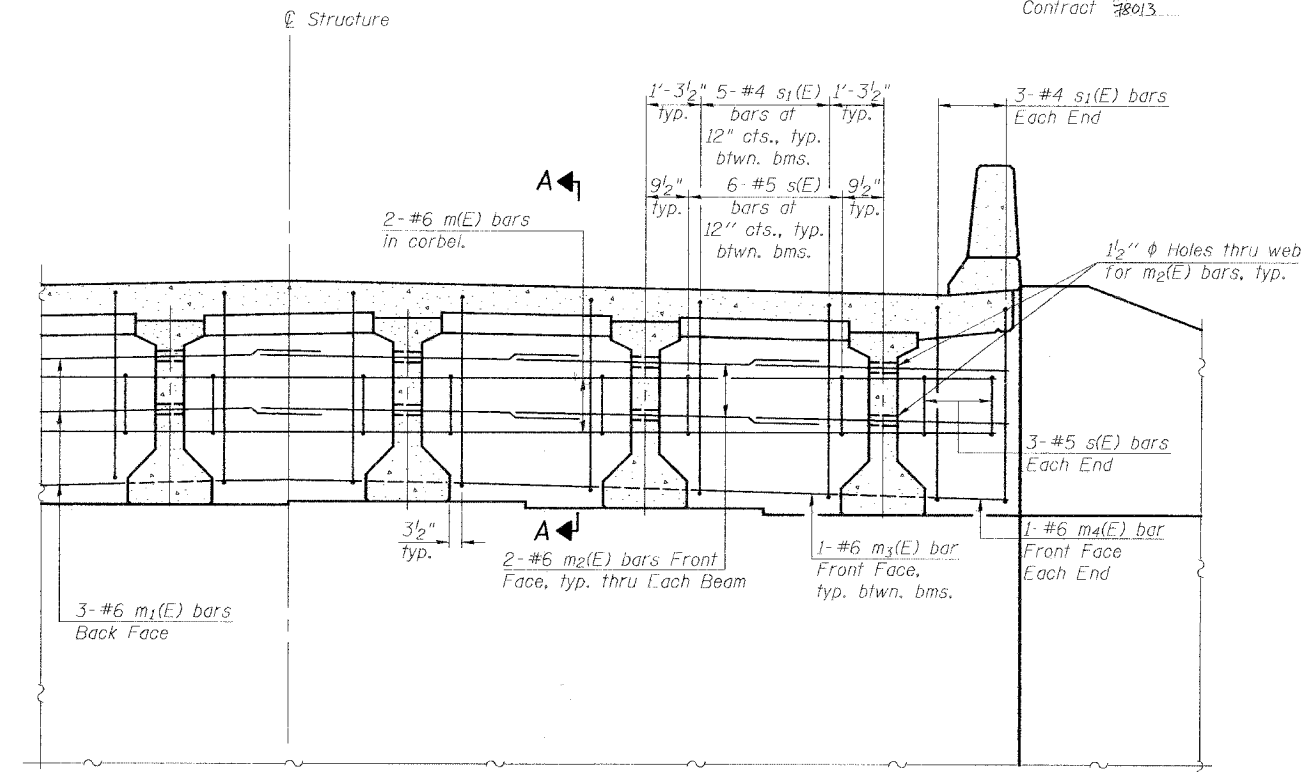
STATE OF ILLINOIS
DEPARTMENT OF TRANSPORTATION

ROUTE NO.	SECTION	COUNTY	TOTAL SHEETS	SHEET NO.	SHEET NO. 8 16 SHEETS
F.A.S. 2826	110B-1	JEFFERSON	44	19	
FED. ROAD DIST. NO. 7	ILLINOIS	FED. AID PROJECT			
Contract #8013					



SECTION A-A

Dimensions at right angles to abutment, except as shown.

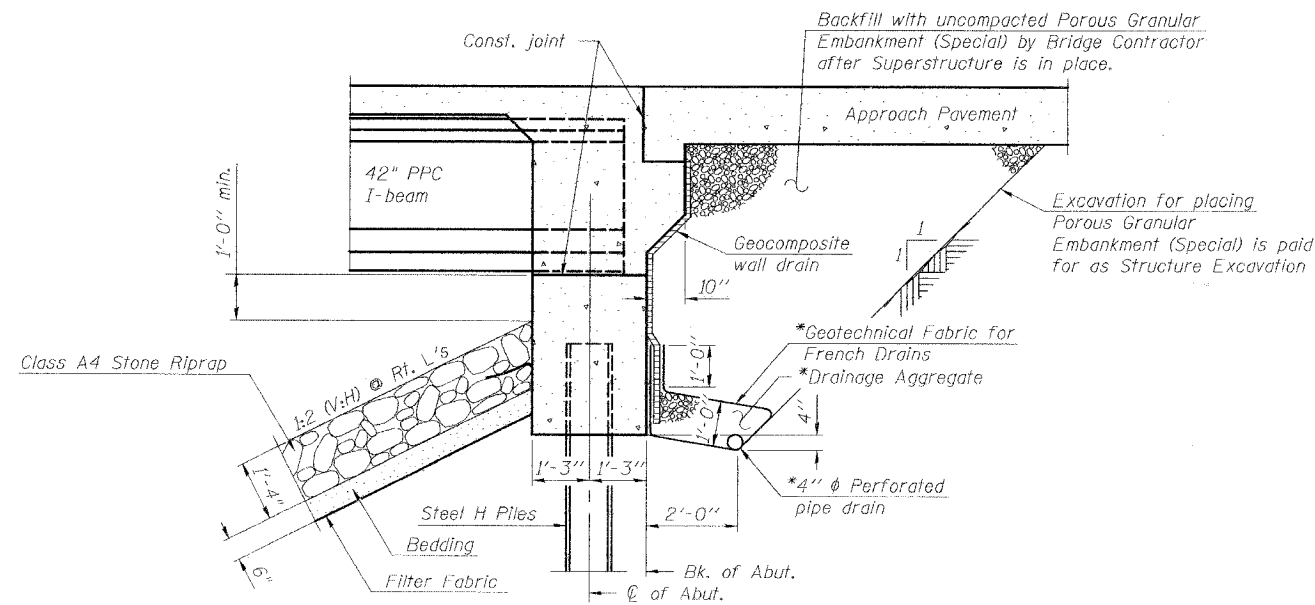


DIAPHRAGM ELEVATION AT ABUTMENT

(Looking South)
South Abut. Shown / North Similar

MINIMUM BAR LAP
#6 bar = 2'-9"

Notes:
Reinforcement bars in diaphragm are billed with superstructure on sheet 7 of 16.
Concrete in diaphragm is included with Concrete Superstructure on sheet 7 of 16.
For details of bars s(E) and s1(E) see sheet 7 of 16.
The s(E) and s1(E) bars shall be placed parallel to the beams. Spacing for these bars shall be at right angles to the beams.
Work this sheet with sheets 6 and 7 of 16.
See Sheet 15 of 16 for Bar Splicer Details.



SECTION THRU INTEGRAL ABUTMENT

(Horiz. dim. @ Rt. L's)

* Included in the cost of Pipe Underdrains for Structures.

Note:
All drainage system components shall extend to 2'-0" from the end of each wingwall except an outlet pipe shall extend until intersecting with the side slopes. The pipes shall drain into concrete headwalls. (See Article 601.05 of the Standard Specifications and Highway Standard 601.101).

DESIGNED	CMF
CHECKED	KCM
DRAWN	JLM
CHECKED	TMM

SUPERSTRUCTURE DETAILS
IL ROUTE 37 OVER LIMESTONE CREEK
F.A.S. ROUTE 2826 SECTION 110B-1
JEFFERSON COUNTY
STA. 836+80
S.N. 041-0107

McDonough-Whitlow, P.C.
Consulting Engineers & Land Surveyors
138 East Wood Street
Hillsboro, IL 62049
Phone: 217.532.9233
Fax: 217.532.6300
PROFESSIONAL DESIGN No. 184-002754