



FAP RTE	SECTION	COUNTY	TOTAL SHEET SHEETS NO.
776	115BR-1	HAMILTON	73 10
STA. 80+00		TO STA. 90+00	
FED. ROAD DIST. NO.	ILLINOIS	FED. AID PROJECT	

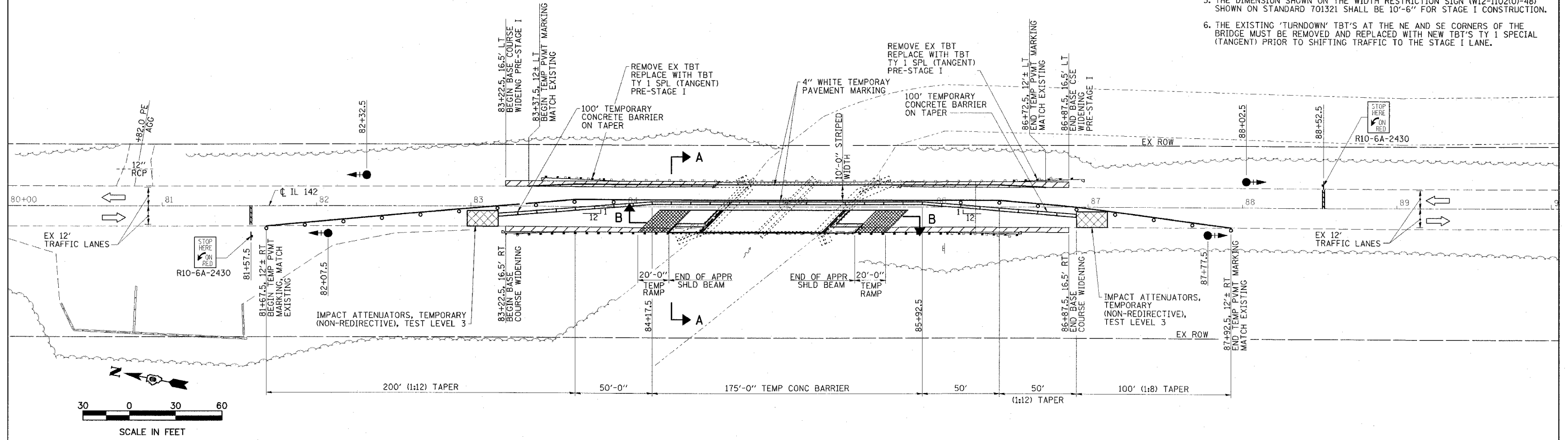
**SCHEDULE OF QUANTITIES**

TEMPORARY CONCRETE BARRIER	STATION TO	STATION	FEET
	83+18	86+92	375
		TOTAL	375

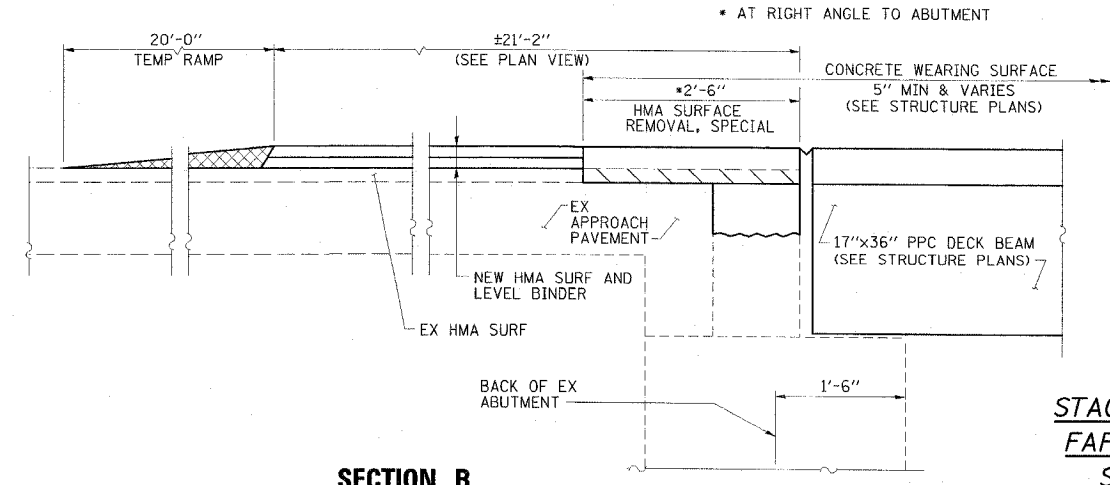
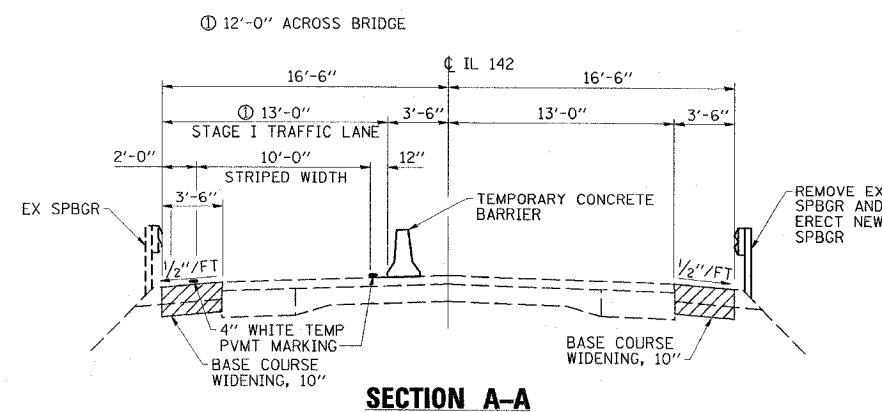
TEMPORARY BRIDGE TRAFFIC SIGNALS - 1 EACH  
 TEMPORARY RUMBLE STRIPS - 6 EACH  
 IMPACT ATTENUATORS, TEMPORARY (NON-REDIRECTIVE), TEST LEVEL 3 - 2 EACH

**GENERAL NOTES**

- TRAFFIC CONTROL SHALL BE ERECTED AS SHOWN AND ACCORDING TO "TRAFFIC CONTROL AND PROTECTION, STANDARD 701321."
- SEE SPECIAL PROVISIONS FOR ADDITIONAL TRAFFIC CONTROL REQUIREMENTS.
- COORDINATE LOCATION OF SIGNALS WITH FINAL WORK AS DIRECTED BY THE ENGINEER.
- CONSTRUCT TEMPORARY RUMBLE STRIPS AT LOCATIONS SHOWN ON STANDARD 701321.
- THE DIMENSION SHOWN ON THE WIDTH RESTRICTION SIGN (W12-1102(0)-48) SHOWN ON STANDARD 701321 SHALL BE 10'-6" FOR STAGE I CONSTRUCTION.
- THE EXISTING 'TURNDOWN' TBT'S AT THE NE AND SE CORNERS OF THE BRIDGE MUST BE REMOVED AND REPLACED WITH NEW TBT'S TY 1 SPECIAL (TANGENT) PRIOR TO SHIFTING TRAFFIC TO THE STAGE I LANE.



- LEGEND**
- TRAFFIC SIGNAL WITH BACKPLATE, SIGNAL DIRECTION INDICATED
  - BASE COURSE WIDENING, 10"
  - TEMPORARY RAMP
  - PAVEMENT REMOVAL
  - HMA SURFACE REMOVAL, SPECIAL



**STAGE I CONSTRUCTION**  
 FAP RTE 776 (IL 142)  
 SECTION 115BR-1  
 HAMILTON COUNTY

**ESCA**  
 CONSULTANTS, INC.

DESIGNED BY:	DAJ	10/07
DRAWN BY:	HAS	10/07
CHECKED BY:	JMS/MTD	02/08
APPROVED BY:	RDP	02/08