



SCHEDULE OF QUANTITIES

RELOCATE TEMPORARY CONCRETE BARRIER	STATION TO	STATION	FEET
	83+18	86+92	375
			TOTAL - 375

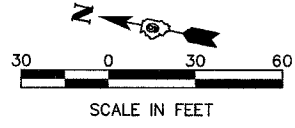
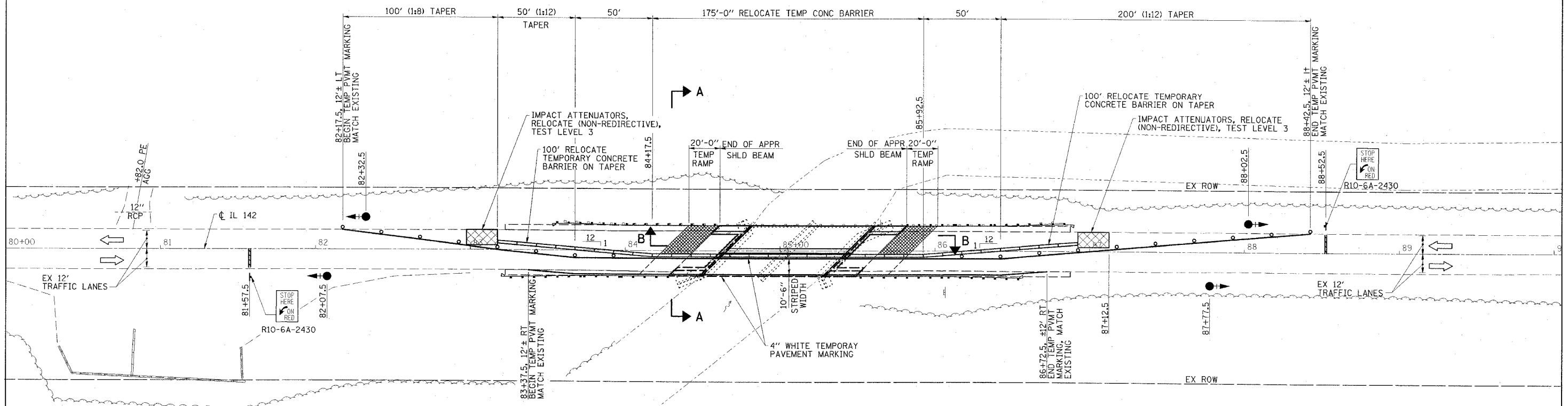
IMPACT ATTENUATORS, RELOCATE (NON-REDIRECTIVE), TEST LEVEL 3 - 2 EACH

CONTRACT NO. 78027

FAP RTE	SECTION	COUNTY	TOTAL SHEETS	SHEET NO.
776	115BR-1	HAMILTON	73	11
STA. 80+00		TO STA. 90+00		
FED. ROAD DIST. NO.		ILLINOIS FED. AID PROJECT		

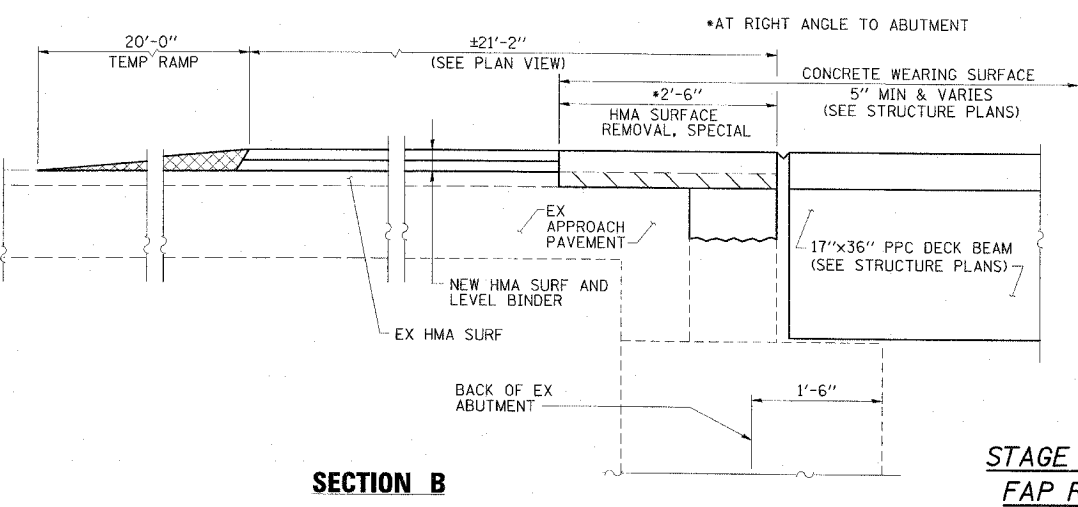
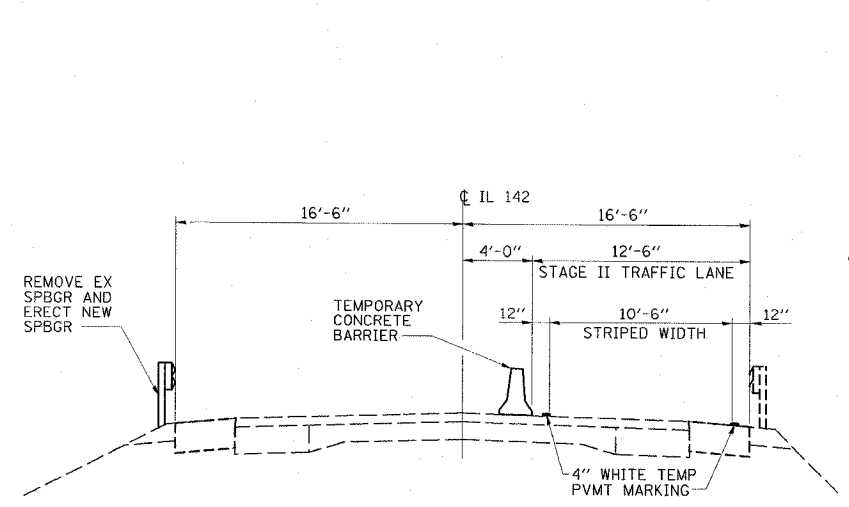
GENERAL NOTES

1. TRAFFIC CONTROL SHALL BE ERECTED AS SHOWN AND ACCORDING TO "TRAFFIC CONTROL AND PROTECTION, STANDARD 701321."
2. SEE SPECIAL PROVISIONS FOR ADDITIONAL TRAFFIC CONTROL REQUIREMENTS.
3. COORDINATE LOCATION OF SIGNALS WITH FINAL WORK AS DIRECTED BY THE ENGINEER.
4. CONSTRUCT TEMPORARY RUMBLE STRIPS AT LOCATIONS SHOWN ON STANDARD 701321.
5. THE DIMENSION SHOWN ON THE WIDTH RESTRICTION SIGN (W12-1102(O)-48) SHOWN ON STANDARD 701321 SHALL BE 11'-0" FOR STAGE II CONSTRUCTION.



LEGEND

- TRAFFIC SIGNAL WITH BACKPLATE, SIGNAL DIRECTION INDICATED
- ▨ TEMPORARY RAMP
- ▨ PAVEMENT REMOVAL
- ▨ HMA SURFACE REMOVAL, SPECIAL



ESCA
CONSULTANTS, INC.

DESIGNED BY:	DAJ	10/07
DRAWN BY:	HAS	10/07
CHECKED BY:	JMS/MTD	02/08
APPROVED BY:	RDP	02/08

STAGE II CONSTRUCTION
FAP RTE 776 (IL 142)
SECTION 115BR-1
HAMILTON COUNTY